

Liu, T, Kim, K-T, Juvela, M, Wang, K, Tatematsu, K, Di Francesco, J, Liu, S-Y, Wu, Y, Thompson, M, Fuller, G, Eden, DJ, Li, D, Ristorcelli, I, Kang, S-J, Lin, Y, Johnstone, D, He, JH, Koch, PM, Sanhueza, P, Qin, S-L, Zhang, Q, Hirano, N, Goldsmith, PF, Evans, NJ, White, GJ, Choi, M, Lee, CW, Toth, LV, Mairs, S, Yi, H-W, Tang, M, Soam, A, Peretto, N, Samal, MR, Fich, M, Parsons, H, Yuan, J, Zhang, C-P, Malinen, J, Bendo, GJ, Rivera-Ingraham, A, Liu, H-L, Wouterloot, J, Li, PS, Qian, L, Rawlings, J, Rawlings, MG, Feng, S, Aikawa, Y, Akhter, S, Alina, D, Bell, G, Bernard, J-P, Blain, A, Bogner, R, Bronfman, L, Byun, D-Y, Chapman, S, Chen, H-R, Chen, M, Chen, W-P, Chen, X, Chen, X, Chrysostomou, A, Cosentino, G, Cunningham, MR, Demyk, K, Drabek-Maunders, E, Doi, Y, Eswaraiah, C, Falgarone, E, Feher, O, Fraser, H, Friberg, P, Garay, G, Ge, JX, Gear, WK, Greaves, J, Guan, X, Harvey-Smith, L, Hasegawa, T, Hatchell, J, He, Y, Henkel, C, Hirota, T, Holland, W, Hughes, A, Jarken, E, Ji, T-G, Jimenez-Serra, I, Kang, M, Kawabata, KS, Kim, G, Kim, J, Kim, J, Kim, S, Koo, B-C, Kwon, W, Kuan, Y-J, Lacaille, KM, Lai, S-P, Lee, CF, Lee, J-E, Lee, Y-U, Li, D, Li, H-B, Lo, N, Lopez, JAP, Lu, X, Lyo, A-R, Mardones, D, Marston, A, McGehee, P, Meng, F, Montier, L, Montillaud, J, Moore, TJT, Morata, O, Moriarty-Schieven, GH, Ohashi, S, Pak, S, Park, G, Paladini, R, Pattle, KM, Pech, G, Pelkonen, V-M, Qiu, K, Ren, Z-Y, Richer, J, Saito, M, Sakai, T, Shang, H, Shinnaga, H, Stamatellos, D, Tang, Y-W, Traficante, A, Vastel, C, Viti, S, Walsh, A, Wang, B, Wang, H, Wang, J, Ward-Thompson, D, Whitworth, A, Xu, Y, Yang, J, Yang, Y-L, Yuan, L, Zavagno, A, Zhang, G, Zhang, H-W, Zhou, C, Zhou, J, Zhu, L, Zuo, P and Zhang, C

The TOP-SCOPE Survey of Planck Galactic Cold Clumps: Survey Overview and Results of an Exemplar Source, PGCC G26.53+0.17

<http://researchonline.ljmu.ac.uk/id/eprint/8189/>

Article

Citation (please note it is advisable to refer to the publisher's version if you intend to cite from this work)

Liu, T, Kim, K-T, Juvela, M, Wang, K, Tatematsu, K, Di Francesco, J, Liu, S-Y, Wu, Y, Thompson, M, Fuller, G, Eden, DJ, Li, D, Ristorcelli, I, Kang, S-J, Lin, Y, Johnstone, D, He, JH, Koch, PM, Sanhueza, P, Qin, S-L, Zhang, Q, Hirano, N, Goldsmith, PF, Evans, NJ, White, GJ, Choi, M, Lee, CW, Toth, LV, Mairs, S.

LJMU has developed **LJMU Research Online** for users to access the research output of the University more effectively. Copyright © and Moral Rights for the papers on this site are retained by the individual authors and/or other copyright owners. Users may download and/or print one copy of any article(s) in LJMU Research Online to facilitate their private study or for non-commercial research. You may not engage in further distribution of the material or use it for any profit-making activities or any commercial gain.

The version presented here may differ from the published version or from the version of the record. Please see the repository URL above for details on accessing the published version and note that access may require a subscription.

For more information please contact researchonline@ljmu.ac.uk

THE TOP-SCOPE SURVEY OF PLANCK GALACTIC COLD CLUMPS: SURVEY OVERVIEW AND RESULTS OF AN EXEMPLAR SOURCE, PGCC G26.53+0.17

TIE LIU,^{1,2} KEE-TAE KIM,¹ MIKA JUVELA,³ KE WANG,⁴ KEN'ICHI TATEMATSU,⁵ JAMES DI FRANCESCO,^{6,7}
SHENG-YUAN LIU,⁸ YUEFANG WU,⁹ MARK THOMPSON,¹⁰ GARY FULLER,¹¹ DAVID EDEN,¹² DI LI,^{13,14} I. RISTORCELLI,¹⁵
SUNG-JU KANG,¹ YUXIN LIN,¹⁶ D. JOHNSTONE,^{6,7} J. H. HE,^{17,18,19} P. M. KOCH,⁸ PATRICIO SANHUEZA,⁵ SHENG-LI QIN,²⁰
Q. ZHANG,²¹ N. HIRANO,⁸ PAUL F. GOLDSMITH,²² NEAL J. EVANS II,^{23,1} GLENN J. WHITE,^{24,25} MINHO CHOI,¹
CHANG WON LEE,^{1,26} L. V. TOTH,²⁷ STEVE MAIRS,⁶ H.-W. YI,²⁸ MENGYAO TANG,²⁰ ARCHANA SOAM,¹ N. PERETTO,²⁹
MANASH R. SAMAL,³⁰ MICHEL FICH,³¹ HARRIET PARSONS,² JINGHUA YUAN,¹³ CHUAN-PENG ZHANG,¹³
JOHANNA MALINEN,³² GEORGE J. BENDO,¹¹ A. RIVERA-INGRAHAM,³³ HONG-LI LIU,^{34,35,36} JAN WOUTERLOOT,²
PAK SHING LI,³⁷ LEI QIAN,¹³ JONATHAN RAWLINGS,³⁸ MARK G. RAWLINGS,² SIYI FENG,³⁹ YURI AIKAWA,⁴⁰ S. AKHTER,⁴¹
DANA ALINA,⁴² GRAHAM BELL,² J.-P. BERNARD,¹⁵ ANDREW BLAIN,⁴³ REBEKA BÖGNER,²⁷ L. BRONFMAN,¹⁹ D.-Y. BYUN,¹
SCOTT CHAPMAN,⁴⁴ HUEI-RU CHEN,⁴⁵ M. CHEN,⁶ WEN-PING CHEN,³⁰ X. CHEN,⁴⁶ XUEPENG CHEN,⁴⁷ A. CHRYSOSTOMOU,¹⁰
GIULIANA COSENTINO,³⁸ M.R. CUNNINGHAM,⁴¹ K. DEMYK,¹⁵ EMILY DRABEK-MAUNDER,⁴⁸ YASUO DOI,⁴⁹ C. ESWARAIAH,⁴⁵
EDITH FALGARONE,⁵⁰ O. FEHÉR,^{51,27} HELEN FRASER,²⁴ PER FRIBERG,² G. GARAY,¹⁹ J. X. GE,¹⁷ W.K. GEAR,²⁹
JANE GREAVES,²⁹ X. GUAN,⁵² LISA HARVEY-SMITH,^{53,41} TETSUO HASEGAWA,⁵ J. HATCHELL,⁵⁴ YUXIN HE,⁵⁵
C. HENKEL,^{16,56} T. HIROTA,⁵ W. HOLLAND,⁵⁷ A. HUGHES,¹⁵ E. JARKEN,⁵⁵ TAE-GEUN JI,²⁸ IZASKUN JIMENEZ-SERRA,⁵⁸
MIJU KANG,¹ KOJI S. KAWABATA,⁵⁹ GWANJEONG KIM,⁵ JUNGHA KIM,²⁸ JONGSOO KIM,¹ SHINYOUNG KIM,¹ B.-C. KOO,⁶⁰
WOOJIN KWON,^{1,61} YI-JEHNG KUAN,⁶² K. M. LACAILLE,^{44,63} S.-P. LAI,⁴⁵ C. F. LEE,⁸ J.-E. LEE,²⁸ Y.-U. LEE,¹
DALEI LI,⁵⁵ HUA-BAI LI,⁶⁴ N. LO,¹⁹ JOHN A. P. LOPEZ,⁴¹ XING LU,⁵ A-RAN LYU,¹ D. MARDONES,¹⁹ A. MARSTON,⁶⁵
P. MCGEEHEE,⁶⁶ F. MENG,⁵² L. MONTIER,¹⁵ JULIEN MONTILLAUD,⁶⁷ T. MOORE,¹² O. MORATA,⁸
GERALD H. MORIARTY-SCHIEVEN,⁶ S. OHASHI,⁵ SOOJONG PAK,²⁸ GEUMSOOK PARK,¹ R. PALADINI,⁶⁶ KATE M PATTLE,⁶⁸
GERARDO PECH,⁸ V.-M. PELKONEN,³ K. QIU,⁶⁹ ZHI-YUAN REN,¹³ JOHN RICHER,⁷⁰ M. SAITO,⁵ TAKESHI SAKAI,⁷¹
H. SHANG,⁸ HIROKO SHINNAGA,⁷² DIMITRIS STAMATELLOS,⁶⁸ Y.-W. TANG,⁸ ALESSIO TRAFICANTE,⁷³ CHARLOTTE VASTEL,¹⁵
S. VITI,³⁸ ANDREW WALSH,⁷⁴ BINGRU WANG,¹³ HONGCHI WANG,⁴⁷ JUNZHI WANG,⁴⁶ D. WARD-THOMPSON,⁶⁸
ANTHONY WHITWORTH,²⁹ YE XU,⁴⁷ J. YANG,⁴⁷ YAO-LUN YANG,⁷⁵ LIXIA YUAN,¹³ A. ZAVAGNO,⁷⁶ GUOYIN ZHANG,¹³
H.-W. ZHANG,⁹ CHENLIN ZHOU,⁴⁷ JIANJUN ZHOU,⁵⁵ LEI ZHU,¹³ PEI ZUO,¹³ AND CHAO ZHANG²⁰

¹Korea Astronomy and Space Science Institute, 776 Daedeokdaero, Yuseong-gu, Daejeon 34055, Republic of Korea

²East Asian Observatory, 660 N. A'ohoku Place, Hilo, HI 96720, USA

³Department of Physics, P.O.Box 64, FI-00014, University of Helsinki, Finland

⁴European Southern Observatory, Karl-Schwarzschild-Str.2, D-85748 Garching bei München, Germany

⁵National Astronomical Observatory of Japan, National Institutes of Natural Sciences, 2-21-1 Osawa, Mitaka, Tokyo 181-8588, Japan

⁶NRC Herzberg Astronomy and Astrophysics, 5071 West Saanich Rd, Victoria, BC V9E 2E7, Canada

⁷Department of Physics and Astronomy, University of Victoria, Victoria, BC V8P 1A1, Canada

⁸Institute of Astronomy and Astrophysics, Academia Sinica. 11F of Astronomy-Mathematics Building, AS/NTU No.1, Sec. 4, Roosevelt Rd, Taipei 10617, Taiwan, R.O.C.

⁹Department of Astronomy, Peking University, 100871, Beijing China

¹⁰Centre for Astrophysics Research, School of Physics Astronomy & Mathematics, University of Hertfordshire, College Lane, Hatfield, AL10 9AB, UK

¹¹UK ALMA Regional Centre Node, Jodrell Bank Centre for Astrophysics, School of Physics and Astronomy, The University of Manchester, Oxford Road, Manchester M13 9PL, UK

¹²Astrophysics Research Institute, Liverpool John Moores University, IC2, Liverpool Science Park, 146 Brownlow Hill, Liverpool L3 5RF, UK

¹³National Astronomical Observatories, Chinese Academy of Sciences, Beijing, 100012, China

¹⁴Key Laboratory of Radio Astronomy, Chinese Academy of Science, Nanjing 210008, China

¹⁵IRAP, Université de Toulouse, CNRS, UPS, CNES, Toulouse, France

- ¹⁶ *Max-Planck-Institut für Radioastronomie, Auf dem Hügel 69, 53121, Bonn, Germany*
- ¹⁷ *Key Laboratory for the Structure and Evolution of Celestial Objects, Yunnan observatories, Chinese Academy of Sciences, P.O. Box 110, Kunming, 650011, Yunnan Province, PR China*
- ¹⁸ *Chinese Academy of Sciences, South America Center for Astrophysics (CASSACA), Camino El Observatorio 1515, Las Condes, Santiago, Chile*
- ¹⁹ *Departamento de Astronomía, Universidad de Chile, Las Condes, Santiago, Chile*
- ²⁰ *Department of Astronomy, Yunnan University, and Key Laboratory of Astroparticle Physics of Yunnan Province, Kunming, 650091, China*
- ²¹ *Harvard-Smithsonian Center for Astrophysics, 60 Garden Street, Cambridge, MA 02138, USA*
- ²² *Jet Propulsion Laboratory, California Institute of Technology, 4800 Oak Grove Drive, Pasadena, CA 91109, USA*
- ²³ *Department of Astronomy, The University of Texas at Austin, 2515 Speedway, Stop C1400, Austin, TX 78712-1205*
- ²⁴ *Department of Physics and Astronomy, The Open University, Walton Hall, Milton Keynes, MK7 6AA, UK*
- ²⁵ *RAL Space, STFC Rutherford Appleton Laboratory, Chilton, Didcot, Oxfordshire, OX11 0QX, UK*
- ²⁶ *University of Science & Technology, 176 Gajeong-dong, Yuseong-gu, Daejeon, Republic of Korea*
- ²⁷ *Eötvös Loránd University, Department of Astronomy, Pázmány Péter sétány 1/A, H-1117, Budapest, Hungary*
- ²⁸ *School of Space Research, Kyung Hee University, Yongin-Si, Gyeonggi-Do 17104, Korea*
- ²⁹ *School of Physics and Astronomy, Cardiff University, Cardiff CF24 3AA, UK*
- ³⁰ *Institute of Astronomy, National Central University, Jhongli 32001, Taiwan*
- ³¹ *Department of Physics and Astronomy, University of Waterloo, Waterloo, Ontario, N2L 3G1, Canada*
- ³² *Institute of Physics I, University of Cologne, Zlpicher Str. 77, D-50937, Cologne, Germany*
- ³³ *European Space Astronomy Centre (ESA/ESAC), Operations Department, Villanueva de la Cañada(Madrid), Spain*
- ³⁴ *Department of Physics, The Chinese University of Hong Kong, Shatin, NT, Hong Kong SAR*
- ³⁵ *Departamento de Astronomía, Universidad de Concepción, Av. Esteban Iturra s/n, Distrito Universitario, 160-C, Chile*
- ³⁶ *Chinese Academy of Sciences South America Center for Astronomy*
- ³⁷ *Astronomy Department, University of California, Berkeley, CA 94720*
- ³⁸ *Department of Physics and Astronomy, University College London, Gower Street, London, WC1E 6BT, UK*
- ³⁹ *Max-Planck-Institut für Extraterrestrische Physik, Giessenbachstrasse 1, 85748, Garching, Germany*
- ⁴⁰ *Center for Computational Sciences, The University of Tsukuba, 1-1-1, Tennodai, Tsukuba, Ibaraki 305-8577, Japan*
- ⁴¹ *School of Physics, University of New South Wales, Sydney, NSW 2052, Australia*
- ⁴² *Department of Physics, School of Science and Technology, Nazarbayev University, Astana 010000, Kazakhstan*
- ⁴³ *University of Leicester, Physics & Astronomy, 1 University Road, Leicester LE1 7RH, UK*
- ⁴⁴ *Department of Physics and Atmospheric Science, Dalhousie University, Halifax, NS, B3H 4R2, Canada*
- ⁴⁵ *Institute of Astronomy and Department of Physics, National Tsing Hua University, Hsinchu, Taiwan*
- ⁴⁶ *Key Laboratory for Research in Galaxies, and Cosmology, Shanghai Astronomical Observatory, Chinese Academy of Sciences, 80 Nandan Road, Shanghai 200030, China*
- ⁴⁷ *Purple Mountain Observatory, Chinese Academy of Sciences, China, Nanjing 210008*
- ⁴⁸ *Imperial College London, Blackett Laboratory, Prince Consort Rd, London SW7 2BB, UK*
- ⁴⁹ *Department of Earth Science and Astronomy, Graduate School of Arts and Sciences, The University of Tokyo, 3-8-1 Komaba, Meguro, Tokyo 153-8902, Japan*
- ⁵⁰ *LERMA, Observatoire de Paris, PSL Research University, CNRS, Sorbonne Universités, UPMC Univ. Paris 06, Ecole normale supérieure, 75005 Paris, France*
- ⁵¹ *Konkoly Observatory, Research Centre for Astronomy and Earth Sciences, Hungarian Academy of Sciences, H-1121 Budapest, Konkoly Thege Miklós út 15-17, Hungary*
- ⁵² *Physikalisches Institut, Universität zu Köln, Zulpicher Str. 77, D-50937 Köln, Germany*
- ⁵³ *CSIRO Astronomy and Space Science, PO Box 76, Epping NSW, Australia*
- ⁵⁴ *Physics and Astronomy, University of Exeter, Stocker Road, Exeter EX4 4QL, UK*
- ⁵⁵ *Xinjiang Astronomical Observatory, Chinese Academy of Sciences; University of the Chinese Academy of Sciences*
- ⁵⁶ *Astronomy Department, Abdulaziz University, PO Box 80203, 21589, Jeddah, Saudi Arabia*
- ⁵⁷ *UK Astronomy Technology Center, Royal Observatory, Blackford Hill, Edinburgh EH9 3HJ, UK; Institute for Astronomy, University of Edinburgh, Royal Observatory, Blackford Hill, Edinburgh EH9 3HJ, UK*
- ⁵⁸ *School of Physics and Astronomy, Queen Mary University of London, Mile End Road, London E1 4NS*
- ⁵⁹ *Hiroshima Astrophysical Science Center, Hiroshima University, Kagamiyama, Higashi-Hiroshima, Hiroshima 739-8526, Japan; Department of Physical Science, Hiroshima University, Kagamiyama, Higashi-Hiroshima 739-8526, Japan*
- ⁶⁰ *Department of Physics and Astronomy, Seoul National University, Gwanak-gu, Seoul 08826, Korea*

⁶¹ *Korea University of Science and Technology, 217 Gajeong-ro, Yuseong-gu, Daejeon 34113, Republic of Korea*

⁶² *Department of Earth Sciences, National Taiwan Normal University, 88 Sec. 4, Ting-Chou Road, Taipei 116, Taiwan*

⁶³ *Department of Physics and Astronomy, McMaster University, Hamilton, ON L8S 4M1 Canada*

⁶⁴ *Department of Physics, The Chinese University of Hong Kong, Shatin, New Territory, Hong Kong, China*

⁶⁵ *ESA/STScI, 3700 San Martin Drive, Baltimore, MD 21218 United States of America*

⁶⁶ *Infrared Processing Analysis Center, California Institute of Technology, 770 South Wilson Ave., Pasadena, CA 91125, USA*

⁶⁷ *Institut UTINAM - UMR 6213 - CNRS - Univ Bourgogne Franche Comte, France*

⁶⁸ *Jeremiah Horrocks Institute for Mathematics, Physics & Astronomy, University of Central Lancashire, Preston PR1 2HE, UK*

⁶⁹ *School of Astronomy and Space Science, Nanjing University, Nanjing 210023*

⁷⁰ *Astrophysics Group, Cavendish Laboratory, J J Thomson Avenue, Cambridge CB3 0HE, UK*

⁷¹ *Graduate School of Informatics and Engineering, The University of Electro-Communications, Chofu, Tokyo 182-8585, Japan*

⁷² *Department of Physics and Astronomy, Graduate School of Science and Engineering, Kagoshima University, 1-21-35 Korimoto, Kagoshima 890-0065, Japan*

⁷³ *IAPS-INAF, via Fosso del Cavaliere 100, 00133, Rome (Italy)*

⁷⁴ *International Centre for Radio Astronomy Research, Curtin University, GPO Box U1987, Perth, WA 6845, Australia*

⁷⁵ *The University of Texas at Austin, Department of Astronomy, 2515 Speedway, Stop C1400, Austin, TX 78712-1205, USA*

⁷⁶ *Aix Marseille Universit, CNRS, LAM (Laboratoire d'Astrophysique de Marseille) UMR 7326, F-13388, Marseille, France*

(Received December 21, 2017; Revised **, 2017; Accepted **, 2017)

Submitted to ApJ

ABSTRACT

The low dust temperatures (<14 K) of Planck Galactic Cold Clumps (PGCCs) make them ideal targets to probe the initial conditions and very early phase of star formation. “TOP-SCOPE” is a joint survey program targeting ~ 2000 PGCCs in J=1-0 transitions of CO isotopologues and ~ 1000 PGCCs in $850\ \mu\text{m}$ continuum emission. The objective of the “TOP-SCOPE” survey and the joint surveys (SMT 10-m, KVN 21-m and NRO 45-m) is to statistically study the initial conditions occurring during star formation and the evolution of molecular clouds, across a wide range of environments. The observations, data analysis and example science cases for these surveys are introduced with an exemplar source, PGCC G26.53+0.17 (G26), which is a filamentary infrared dark cloud (IRDC). The total mass, the length and the mean line-mass (M/L) of the G26 filament are $\sim 6200\ M_{\odot}$, $\sim 12\ \text{pc}$ and $\sim 500\ M_{\odot}\ \text{pc}^{-1}$, respectively. Ten massive clumps including eight starless ones are found along the filament. The most massive Clump as a whole may be still in global collapse while its denser part seems to be undergoing expansion due to outflow feedback. The fragmentation in G26 filament from cloud scale to clump scale is in agreement with gravitational fragmentation of an isothermal, non-magnetized, and turbulent supported cylinder. A bimodal behavior in dust emissivity spectral index (β) distribution is found in G26, suggesting grain growth along the filament. The G26 filament may be formed due to large-scale compression flows evidenced by the temperature and velocity gradients across its natal cloud.

Keywords: surveys – ISM: clouds – ISM: kinematics and dynamics – ISM: abundances – stars: formation

1. INTRODUCTION

In the current paradigm, stars form within cold and dense fragments in the clumpy and filamentary molecular clouds. Recent studies of nearby clouds by Herschel have revealed a “universal” filamentary structure in the cold ISM (André et al. 2014). A main filament surrounded by a network of perpendicular striations seems to be a very common pattern in molecular clouds. Within the filaments are compact (with sizes of 0.1 pc or less), cold ($T_k \leq 10$ K), and dense ($n(\text{H}_2) > 5 \times 10^4 \text{ cm}^{-3}$) starless condensations, usually dubbed “prestellar cores”, which are centrally concentrated and largely thermally supported (Caselli 2011). However, the way that filaments form in the cold ISM is still far from being well characterized. Also, the properties of prestellar cores and how prestellar cores evolve to form stars are still not fully understood due to a lack of statistical studies toward a large sample.

The roles of turbulence, magnetic fields, gravity, and external compression in shaping molecular clouds and producing filaments can only be thoroughly understood by investigating an all-sky sample that contains a representative selection of molecular clouds in different environments. Observations by Herschel revealed that more than 70% of the prestellar cores (and protostars) are embedded in the larger, parsec-scale filamentary structures in molecular clouds (André et al. 2010, 2014; Könyves et al. 2010). The fact that the cores reside mostly within the densest filaments with column densities exceeding $\sim 7 \times 10^{21} \text{ cm}^{-2}$ strongly suggests a column density threshold for core formation (André et al. 2014). Such column density threshold for core formation was also suggested before Herschel (Johnstone, Di Francesco, & Kirk 2004; Kirk, Johnstone, & Di Francesco 2006). The (prestellar) core mass function being very similar in shape to the stellar initial mass function further suggests a connection to the underlying star formation process (e.g., Motte, Andre, & Neri 1998; Johnstone et al. 2000; Alves et al. 2007; André et al. 2014; Könyves et al. 2015).

While significant progress has been made in recent years, past high-resolution continuum and molecular line surveys have mostly focused on the Gould belt clouds or the inner Galactic plane. There are hence still fundamental aspects of the initial conditions for star formation that remain unaddressed, which include but are not limited to:

- On smaller scales ($\sim \text{pc}$), how and where do prestellar cores (i.e., future star forming sites) form in abundance? Specifically, can prestellar cores form in less dense and high latitude clouds or short lived cloudlets?

Is there really a “universal” column density threshold for core/star formation?

- On larger scales ($\sim \times 10$ pc), what controls the formation of hierarchical structure in molecular clouds? What is the interplay between turbulence, magnetic fields, gravity, kinematics and external pressure in molecular cloud formation and evolution in different environments (e.g., spiral arms, interarms, high latitude, expanding HII regions, supernova remnants)? How common are filaments in molecular clouds? What is the role of filaments in generating prestellar cores?

1.1. *Planck Galactic Cold Clumps*

The Planck is the third-generation mission to measure the anisotropy of the cosmic microwave background radiation, and it observed the entire sky in nine frequency bands (between 30 and 857 GHz bands). The high frequency channels of Planck cover the peak thermal emission spectrum of dust colder than 14 K (Planck Collaboration XXIII 2011; Planck Collaboration XXVIII 2016), indicating that Planck could probe the coldest parts of the ISM. The Planck team has catalogued 13188 Planck galactic cold clumps (PGCCs), which are distributed across the whole sky, i.e., from the Galactic plane to high latitudes, following the spatial distribution of the main molecular cloud complexes. All 13188 PGCCs are overlaid on the Planck map in Figure 1.

The catalogue of PGCCs was generated using the CoCoCoDeT algorithm (Montier et al. 2010). The method uses spectral information to locate sources of cold dust emission. Each of the *Planck* 857, 545, and 353 GHz maps is compared to the IRAS 100 μm data. The 100 μm maps and the local average ratio of the *Planck* and IRAS bands represent the distribution of warm dust emission. The spectrum of this extended component is estimated from an annulus between 5' and 15' from the center position. This also sets an upper limit to the angular size of the detected clumps. Once the template of warm dust emission is subtracted from the *Planck* data, the residual maps of cold dust emission can be used for source detection. The initial catalogs were generated for the three *Planck* bands separately and were then merged, requiring a detection and a signal-to-noise ratio greater than 4 in all three bands.

The properties of the PGCC catalogue are described in Planck Collaboration XXVIII (2016). The source SEDs (based on the four bands used in the source detection) give color temperatures 6-20 K with a median value of ~ 14 K. About 42% of the sources have reliable distance estimates that were derived with methods such as 3D extinction mapping, kinematic distances, and association with known cloud complexes. The distance

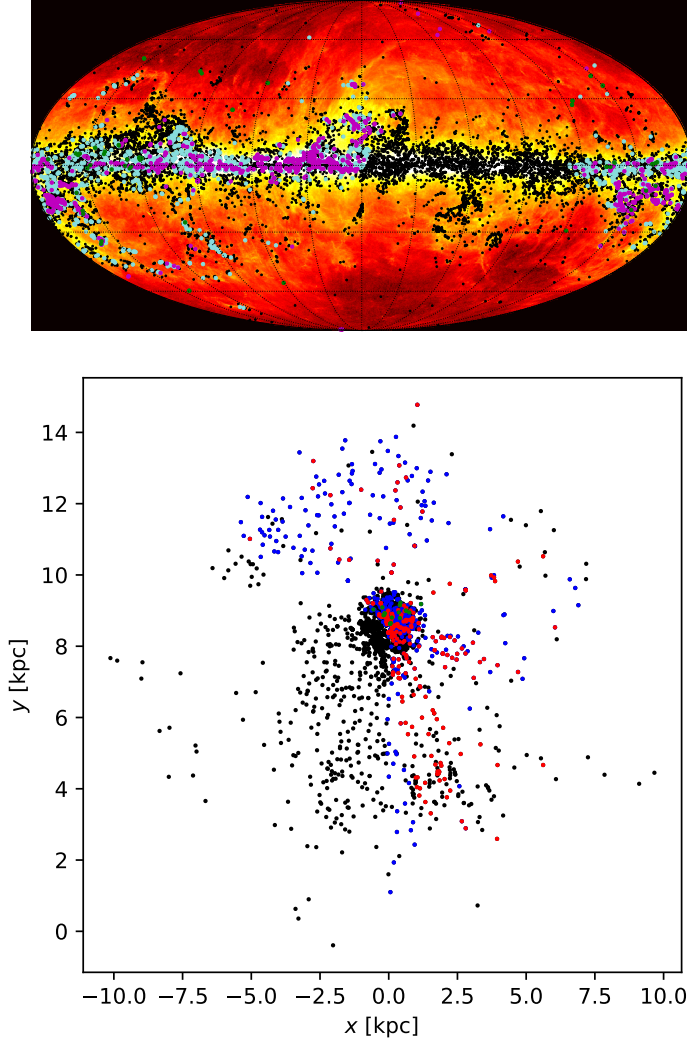


Figure 1. Upper panel: All-sky distribution of the 13188 PGCC sources (black dots), the 2000 PGCC sources (blue dots) selected for TOP and 1000 PGCC sources (magenta dots) selected for SCOPE overlaid on the 857 GHz Planck map. Lower Panel: A face-on view of all-sky distribution of PGCCs with distances. The PGCCs in the initial PGCC sample, the TOP sample, and the SCOPE sample are shown in black dots, blue dots and red dots, respectively. The green dots represent PGCCs observed in the SCUBA-2 Ambitious Sky Survey (SASSy) at the JCMT, as part of pilot studies of SCOPE.

distribution extends from 0.1 kpc to 10 kpc with a median of ~ 0.4 kpc. Because of the low angular resolution of the data ($\sim 5'$) and the wide distribution of distances, the PGCC catalog contains a heterogeneous set of objects from nearby low-mass clumps to distant massive clouds. This is reflected in the physical parameters where the object sizes range from 0.1 pc to over 10 pc and the masses from below $0.1 M_{\odot}$ to over $10^4 M_{\odot}$.

PGCC is the first homogeneous survey of cold and compact Galactic dust clouds that extends over the whole sky. The main common feature of the PGCC sources is the detection of a significant excess of cold dust emission. This is suggestive of high column densities, a fact that has also been corroborated by subsequent Herschel studies (Planck Collaboration XXIII 2011; Planck Collaboration XXVIII 2016; Montillaud et al. 2015). The catalog covers wide range of galactocentric distances (almost 0-15 kpc) and a wide range of environments from quiescent high-latitude clouds to active star-forming clouds and sites of potential triggered star formation. This makes the PGCC catalogue a good starting point for many studies of the star formation process. Figure 2 shows the distributions of several parameters for the PGCC catalog sources.

A large fraction of PGCCs seems to be quiescent, not affected by on-going star-forming activity (Wu et al. 2012; Liu et al. 2014). Those sources are prime candidates for probing how prestellar cores form and evolve, and the initial stages of star formation across a wide variety of Galactic environments. The detection of gravitationally bound CO gas clumps (Liu et al. 2012; Meng et al. 2013; Zhang et al. 2016) and dense molecular line tracers (Yuan et al. 2016; Tatematsu et al. 2017) inside PGCCs strongly suggests that many of PGCCs have the ability to form stars. Moreover, their low level of CO gas depletion indicates that the natal clouds of PGCCs are still in the early stages of molecular cloud evolution (Liu et al. 2013). A number of PGCCs were purposely followed-up with observations with the Herschel satellite. These higher resolution data revealed great variety in the morphology of the PGCCs (Planck Collaboration XXII 2011b; Juvela et al. 2012; Montillaud et al. 2015). The clumps typically have significant sub-structure and are often (but not always) associated with cloud filaments (Rivera-Ingraham et al. 2016). Further clues to the nature of the clumps is provided by the dust emission properties, the PGCCs showing particularly high values for submillimetre opacity and the spectral index β (Juvela et al. 2015a,b). Prestellar cores and extremely young Class 0 objects have been detected in PGCCs (Liu et al. 2016; Tatematsu et al. 2017), indicating that some PGCCs can be used to trace the initial conditions when star formation commences.

Because of the uniqueness and importance of PGCC sources to understanding the earliest stages of star formation, we have been conducting a series of surveys to characterize the physical and dynamical state of PGCCs. These surveys are described in the following sections.

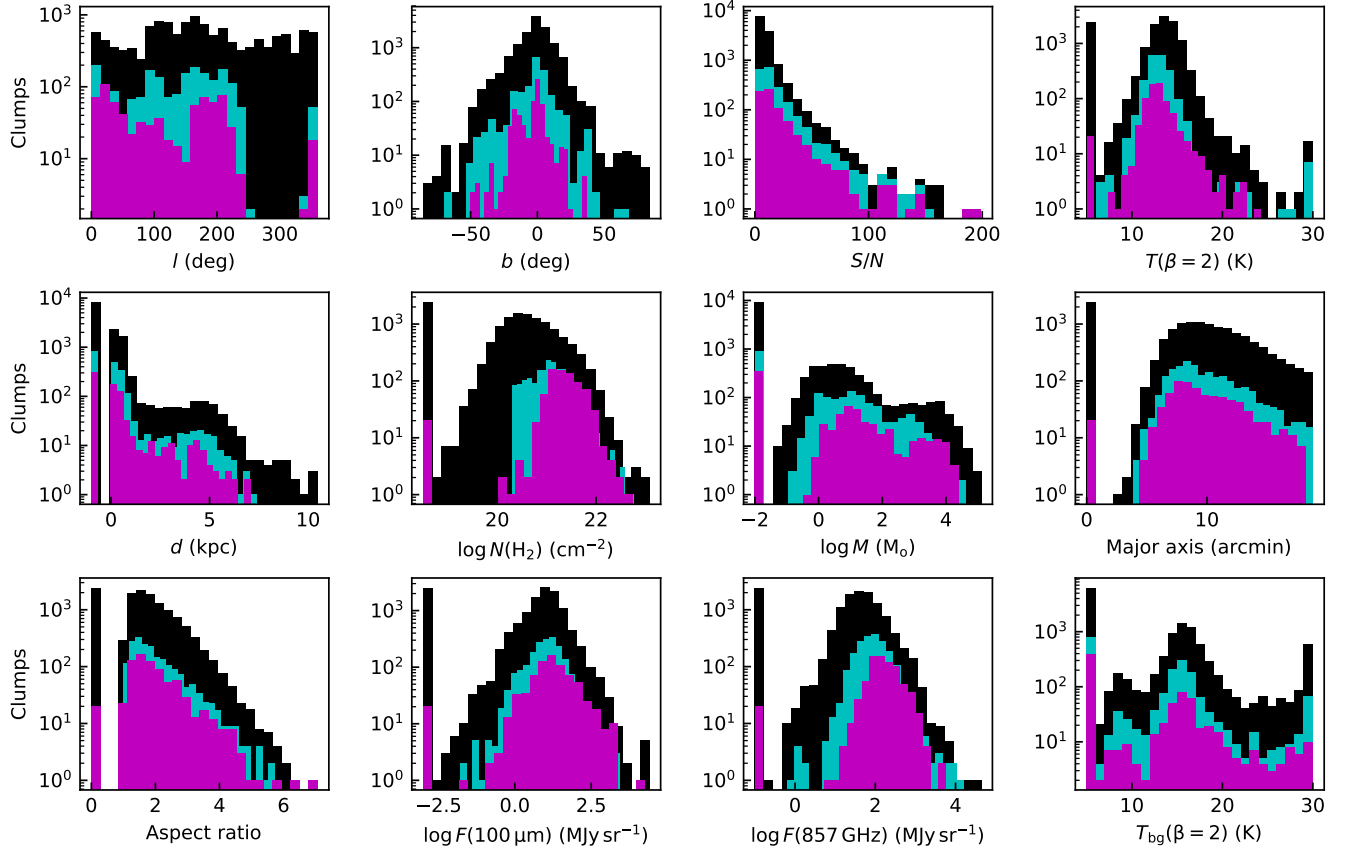


Figure 2. Statistics of the initial PGCC sample (black), the TOP sample (blue) and the SCOPE sample (magenta). The y axis is number. From upper-left to lower-right: Longitude, Latitude, SNR, dust temperature, distance, column density, mass, Major axis, Aspect ratio, 100 μm flux density, 350 μm flux density, and background temperature. In the panels except for Longitude, Latitude, and SNR, the lowest bin corresponds to clumps for which the parameter value is unknown.

2. THE “TOP-SCOPE” SURVEY OF PGCCS

2.1. TRA0 Observations of PGCCs (TOP)

“TOP” is a Key Science Program (KSP) of the Taeduk Radio Astronomy Observatory (TRA0). It is a survey of the J=1-0 transitions of ^{12}CO and ^{13}CO toward ~ 2000 PGCCs. Some interesting PGCCs were also mapped in C ^{18}O (1-0) line. The “TOP” survey was initiated in December 2015. The main aims of “TOP” are: to find CO dense clumps; to study the universality and ubiquity of filamentary structures in the cold ISM; to study cloud evolution in conjunction with HI surveys; to investigate how CO abundances change with the evolutionary status of the cloud, and across a range of different environments; to investigate the roles of turbulence, magnetic fields and gravity in structure formation; and to investigate the dynamical effect of stellar feedback and/or cloud-cloud collisions on star formation.

• The TRA0 14-m telescope

The Taeduk Radio Astronomy Observatory (TRA0¹) was established in October 1986 with the 14-meter radio telescope located on the campus of the Korea Astronomy and Space Science Institute (KASI) in Daejeon, South Korea. The surface accuracy of the primary reflector is $<130 \mu\text{m}$ rms, and the telescope pointing accuracy is better than $10''$ rms. The main FWHM beam sizes for the ^{12}CO (1-0) and ^{13}CO (1-0) lines are $45''$ and $47''$, respectively. The new receiver system, SEQUOIA-TRA0, is equipped with high-performance 16-pixel MMIC preamplifiers in a 4×4 array, operating in the 85-115 GHz frequency range. The noise temperature of the receiver is 50-80 K over most of the band. The system temperature ranges from 150 K (86-110 GHz) to 450 K (115 GHz; ^{12}CO). The 2nd IF modules with a narrow band, and the 8 channels with 4 FFT spectrometers, allow simultaneous observations at two frequencies within the 85-100 GHz or 100-115 GHz bands for all 16-pixels of the receiver. The backend

¹ http://radio.kasi.re.kr/trao/main_trao.php

system (a FFT spectrometer) provides 4096×2 channels with fine velocity resolution of less than 0.1 km s^{-1} (15 kHz) per channel, and full spectral bandwidth of 60 MHz ($\sim 160 \text{ km s}^{-1}$ for ^{12}CO).

• Source selection

The TOP survey has a target list that probes the early stages of star formation across a wide range of Galactic environments. The starting point is the PGCC catalogue, which contains all cold dust clouds detected by Planck, in combination with the IRAS $100 \mu\text{m}$ data. Given the very high sensitivity of the Planck measurements, the PGCC catalogue is currently the most complete unbiased all-sky catalog of cold clumps.

The TOP target list was constructed according to the following selection criteria. We excluded regions targeted as part of the previous Galactic Plane (Moore et al. 2015) or Gould Belt Surveys (Ward-Thompson et al. 2007) at the James Clerk Maxwell Telescope (JCMT²) because these locations have been extensively observed by other telescopes (e.g., JCMT, NRO 45-m and PMO 14-m) both by molecular line and by dust continuum emission observations. The TOP survey is therefore highly complementary to these previous surveys. The PGCCs in these excluded regions will also be investigated in our statistical studies using the archived data.

To ensure a representative study of the full PGCC population, the sources were divided into bins of Galactic longitude (every 30°), latitude (divided by $|b|=0^\circ, 4^\circ, 10^\circ$, and 90°), and distance (divided by $d=0 \text{ pc}, 200 \text{ pc}, 500 \text{ pc}, 1000 \text{ pc}, 2000 \text{ pc}, 8000 \text{ pc}$ and unknown), and targets were selected from each bin. Similarly, we cover the full range of source temperatures and column densities in Planck measurements. The sampling is weighted towards the very coldest sources (Note that one third of the targets PGCC lists only an upper limit of the temperature). The sample includes 787 very cold sources for which PGCC catalog only gives a temperature upper limit. To ensure a good detection rate, the sampling is weighted towards higher column densities. Within the constraints listed above, preference is given to regions covered previously by Herschel observations, which can further confirm the presence of compact sources and give more reliable estimates of their column densities. Figure 1 shows our target list of 2000 sources, sufficient to sample well the whole TRAO-visible sky and enable meaningful statistical studies of targets with different physical characteristics and in different environments.

About one third of the 2000 sources have Herschel data at $70/100\text{--}500 \mu\text{m}$. A large fraction of these data come from the Herschel Galactic Cold Cores survey (PI: M. Juvela) where the targets were also selected from the PGCC catalog, employing a random sampling similar to the one outlined above. The TOP sample covers widely different Galactic environments as shown in Figure 1. Among the 2000 sources, 219 are located in the Galactic Plane with $|b| < 1^\circ$ and 154 at high latitudes with $|b| > 30^\circ$. Based on positional correlations, a sizable fraction of the targets in the Plane are expected to be influenced by nearby HII regions (Planck Collaboration XXVIII 2016). For example, 50 PGCCs in the λ Orionis Complex were included in the TOP sample. The λ Orionis Complex containing the nearest giant HII region has moderately enhanced radiation field and the molecular clouds therein seem to be greatly affected by stellar feedback (Liu et al. 2016; Goldsmith et al. 2016). Among the 1181 sources with known distances in the TOP sample, 997 are within 2 kpc and 99 are beyond 4 kpc. Out of the 2000 sources, 753 have axial ratios larger than 2, suggestive of extended filamentary structures.

In Figure 2, we show the distributions of parameters for the TOP sample and the initial PGCC sample. In general, the TOP sample has similar distributions in longitude, latitude, and sizes as the initial PGCC sample. However, the TOP sample tends to have lower temperature and higher column density than the initial PGCC sample.

• Observation strategy

We firstly conduct single-pointing observations in ^{12}CO (1-0) and ^{13}CO (1-0) lines simultaneously, to determine the systemic velocity of each target and also to find suitable reference positions for mapping. The on and off source time in single-pointing survey is 30 seconds. For mapping observations, we applied the On-The-Fly (OTF) mode to map the PGCCs in the ^{12}CO (1-0) and ^{13}CO (1-0) lines simultaneously. A small fraction ($<10\%$) of interesting “TOP” targets will also be mapped in C^{18}O (1-0) line. The map size is set to $15' \times 15'$. Since the PGCC sources have average angular sizes of $8'$ (Planck Collaboration XXVIII 2016), the map size is large enough to well cover most PGCCs. We did, however, obtain larger (e.g., $30'$) OTF maps for some extended PGCCs. The FWHM beam sizes (θ_B) for the ^{12}CO (1-0) and ^{13}CO (1-0) lines are $45''$ and $47''$, respectively. The main beam efficiencies (η_B) for ^{12}CO (1-0) and ^{13}CO (1-0) lines are 54% and 51%, respectively. The typical system temperatures for ^{12}CO (1-0) and ^{13}CO (1-0) lines were $\sim 500 \text{ K}$ and ~ 250

² <http://www.eaobservatory.org/jcmt/about-jcmt/>

K, respectively. We can achieve a typical sensitivity of ~ 0.5 K and 0.2 K in T_A^* for the ^{12}CO (1-0) and ^{13}CO (1-0) lines at a spectral resolution of 0.33 km s^{-1} over the mapping field in ~ 40 minutes integration time. The OTF data are regridded into Class format files with a pixel size of $24''$ with an OTFtool at TRA0. The OTF data were smoothed to 0.33 km s^{-1} and baseline removed with Gildas/Class with one or three-order polynomial. Then the Class format files were converted to FITS format files for analyzing with the MIRIAD and CASA packages.

2.2. SCUBA-2 Continuum Observations of Pre-protostellar Evolution (SCOPE)

The “SCOPE”³ is one of the eight large programs at the JCMT of the East Asia Observatory (EAO) in the 2015 call. It is a survey of ~ 1000 PGCCs at $850 \mu\text{m}$ continuum. The “SCOPE” project was launched in December 2015. The main aims of the “SCOPE” survey are: to obtain a census of dense clumps distributed in widely different environments; to study the roles of filaments in dense core formation; to investigate dust properties; and to detect rare populations of dense clumps (e.g., first hydrostatic cores; massive starless cores; pre-/proto brown dwarfs; extremely cold cores).

• The SCUBA-2 bolometer camera at the JCMT 15-m telescope

With a diameter of 15-m, the JCMT is the largest single-dish astronomical telescope in the world designed specifically to operate in the submillimetre wavelength region of the spectrum. SCUBA-2 (Submillimetre Common-User Bolometer Array 2⁴) is an array operating simultaneously at $450 \mu\text{m}$ and $850 \mu\text{m}$ with a total of 5120 bolometers per wavelength (Holland, et al. 2013). The instrument has a field of view of 45 arcmin^2 . The instrument is cooled by three pulse tube coolers and a dilution refrigerator. The dilution fridge has a base temperature of about 50 mK . The focal plane that is the heat bath for the bolometers is temperature controlled at 75 mK . The main FWHM beam size of SCUBA-2 is $7''.9$ at $450 \mu\text{m}$ and $14''.1$ at $850 \mu\text{m}$ (Dempsey et al. 2013).

• Source selection

The 1000 “SCOPE” targets are selected from the 2000 PGCCs in the “TOP” survey sample. Preference

is given to regions covered by Herschel observations or high column density ($> 1 \times 10^{21} \text{ cm}^{-2}$ in Planck measurements) clumps. From our pilot study of 300 PGCCs (see Figure 3), we found that the dense core detection rates in SCUBA-2 observations drastically drop toward PGCCs with higher latitude and lower column density. Therefore, the “SCOPE” sample is further selected biased to high column density PGCCs in each parameter bin of the “TOP” survey sample. However, to ensure a good representation of the Galactic distribution of the full PGCC population, we also included many lower column density ($> 5 \times 10^{20} \text{ cm}^{-2}$ in Planck measurements) clumps at high latitudes as well. As shown in Figure 2, the SCOPE sample has similar distributions in most parameters (except column density, mass and flux) as the TOP sample and the initial PGCC sample. The SCOPE sample tends to have larger column density and masses than the TOP sample and the initial PGCC sample. About half of SCOPE sources have distances within 2 kpc . The high resolution of SCUBA-2 at $850 \mu\text{m}$ can easily resolve dense cores (with sizes of $\sim 0.1 \text{ pc}$) inside these PGCCs with distances smaller than $\sim 2 \text{ kpc}$.

• Observation strategy

Since the PGCC sources have average angular sizes of $8'$ (Planck Collaboration XXVIII 2016), as noted above, the “SCOPE” observations were conducted primarily using the CV Daisy mode⁵. The CV Daisy is designed for small compact sources providing a deep $3'$ (in diameter; the same as below) region in the centre of the map but coverage out to beyond $12'$ (Bintley et al. 2014). All the SCUBA-2 $850 \mu\text{m}$ continuum data were reduced using an iterative map-making technique (Chapin et al. 2013). Specifically the data were all run with the same reduction tailored for compact sources, filtering out scales larger than $200''$ on a $4''$ pixel scale, for the first data release to the team. We also, however, tried different filtering and external masks in the data reduction for individual sources, which will be discussed below. The Flux Conversion Factor varies with time. A mean Flux Conversion Factor (FCF) of 554 Jy/pW/beam was used to convert data from pW to Jy/beam in the pipeline for the first data release. The FCF is higher than the canonical value derived by Dempsey et al. (2013). This higher value reflects the impact of the data reduction technique and pixel size used by the us. The observations were conducted under grade 3/4 weather conditions with 225 GHz opacities

³ SCOPE: <https://www.eaobservatory.org/jcmt/science/large-programs/scope/>

⁴ <http://www.eaobservatory.org/jcmt/instrumentation/continuum/scuba-2/>

⁵ <http://www.eaobservatory.org/jcmt/instrumentation/continuum/scuba-2/observing-modes/>

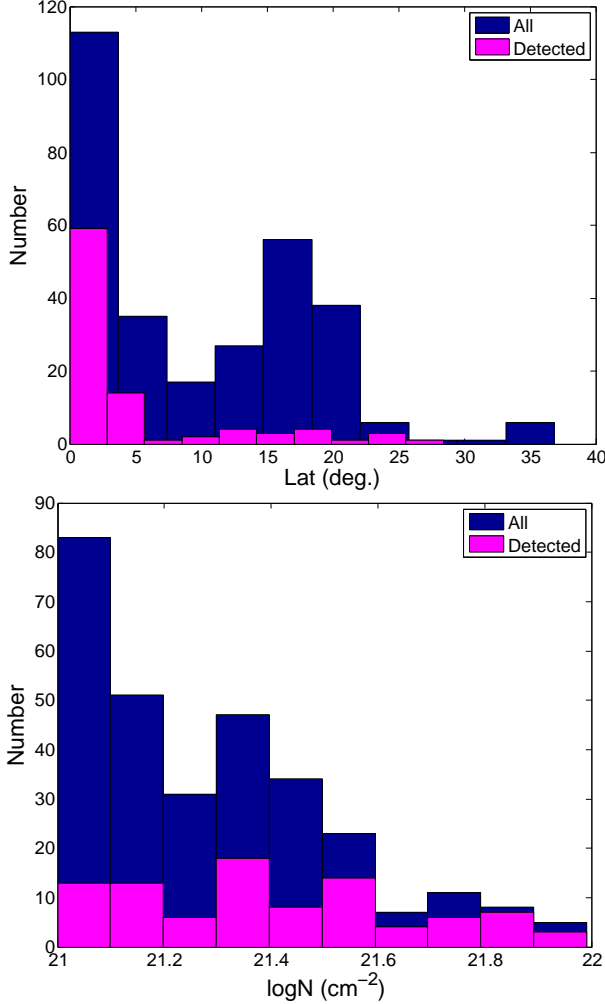


Figure 3. SCUBA-2 detections as function of latitude (upper panel) and column density (lower panel) for PGCCs in the pilot study. The 300 PGCCs in pilot studies are shown in blue, while those with SCUBA-2 detections are shown in pink.

between 0.1-0.15. With 16 minutes of integration time per map we reach an rms noise of ~ 6 -10 mJy beam⁻¹ in the central 3' region. The rms noise increases to 10-30 mJy beam⁻¹ out to 12', which is better than the sensitivity (50-70 mJy beam⁻¹) in the 870 μ m continuum ATLASGAL survey (Contreras et al. 2013).

3. OTHER JOINT SURVEYS AND FOLLOW-UP OBSERVATIONS

Besides the “TOP-SCOPE” survey, we are also conducting joint surveys and follow-up observations with other telescopes (e.g., SMT 10-m, KVN 21-m, NRO 45-m, & SMA; see Liu et al. 2016; Tatematsu et al. 2017).

3.1. SMT “All-sky” Mapping of *PLanck* Interstellar Nebulae in the Galaxy (SAMPLING)

“SAMPLING”⁶ is an ESO public survey to map up to 600 PGCCs in the J=2-1 transition of ¹²CO and ¹³CO using the SMT 10-m telescope (Wang et al. 2017, in preparation). The “SAMPLING” project was also launched in December 2015. The typical map sizes in the “SAMPLING” survey is 5' \times 5' with an rms level of ~ 0.2 K at a spectral resolution of 0.34 km s⁻¹. The beam size and main beam efficiency are 36" and 0.7, respectively. In conjunction with the “TOP-SCOPE” survey, the “SAMPLING” survey aims to resolve the clump structure, to derive the internal variations of column density, turbulent and chemical properties, and also to make a connection to Galactic structure. We observed the exemplar source, PGCC G26.53+0.17, in ¹³CO (2-1) line with the SMT telescope. The observational parameters are summarized in Table A1 in Appendix A.

3.2. KVN survey of SCUBA-2 dense clumps

The Korean VLBI Network (KVN) is a three-element Very Long Baseline Interferometry (VLBI) network working at millimeter wavelengths. Three 21-m radio telescopes are located in Seoul, Ulsan, and Jeju island, Korea. We use the single-dish mode of the three 21-m radio telescopes to observe the dense clumps detected in the “SCOPE” survey. The antenna pointing accuracy of the KVN telescopes is better than 5 arcsec. The KVN telescopes can operate at four frequency bands (i.e., 22, 44, 86, and 129 GHz) simultaneously. The beam sizes at the four bands are $\sim 126''$, $\sim 63''$, $\sim 32''$, and $\sim 23''$ at 22 GHz, 44GHz, 86 GHz and 129 GHz, respectively. The main beam efficiencies are $\sim 50\%$ at 22 GHz and 44 GHz and $\sim 40\%$ at 86 GHz and 129 GHz.

A key science proposal for single-pointing molecular line observations of ~ 1000 “SCOPE” dense clumps with KVN telescopes will be submitted in 2017. The main target lines are the 22 GHz water maser, 44 GHz Class I methanol maser, and other dense molecular lines, which are listed in Table A1 in Appendix A. The 22 GHz water maser and 44 GHz Class I methanol maser are indicators of outflow shocks. SiO thermal lines are also good tracers for outflow shocks or shocks induced by cloud-cloud collisions. Dense gas tracers (e.g., J=1-0 transitions of N₂H⁺, H¹³CO⁺, HN¹³C) can be used to determine the systemic velocities and the amount of turbulence in dense clumps. Optically thick lines (e.g., J=1-0 transitions of HCN and HCO⁺) can

⁶ <http://sky-sampling.github.io>

be used to trace infall and outflow motions. H_2CO $2_{1,2} - 1_{1,1}$ is a dense gas tracer and can also be used to reveal infall and outflow motions (Liu et al. 2016). The deuteration of H_2CO will be determined from observations of H_2CO ($2_{1,2}-1_{1,1}$) and HDCO ($2_{0,2}-1_{0,1}$) lines. The $[\text{HDCO}]/[\text{H}_2\text{CO}]$ ratios will be used to trace the early phase of dense core evolution (Kang et al. 2015). Pilot surveys of ~ 200 “SCOPE” dense clumps with the KVN telescopes were conducted in 2016 (e.g., Yi et al. 2017, in preparation; Kang et al. 2017, in preparation; Liu et al. 2016). In the single-pointing molecular line observations, it takes about 20 minutes (on+off) to achieve an rms level of <0.1 K in brightness temperature with dual polarization at a spectral resolution of $\sim 0.2 \text{ km s}^{-1}$ under normal weather conditions. The KVN observations of the exemplar source, PGCC G26.53+0.17, are summarized in Table A1 in Appendix A.

The KVN data are also reduced with the Gildas/Class package. All the scans were averaged to get the final averaged spectra and the baselines of the averaged spectra were removed with a linear fit.

3.3. NRO 45-m follow-up survey

By using the 45 m telescope of Nobeyama Radio Observatory (NRO), we plan to carry out a comprehensive study of cores selected from the JCMT SCOPE survey to scrutinize the initial conditions of star formation in widely different environments including massive star forming regions. We will observe 100 cores in various environments in DNC, HN^{13}C , N_2D^+ , and cyclic- C_3H_2 with receiver T70 in single-pointing mode. Among the 100 cores, 35 cores will also be mapped in ^{12}CO , ^{13}CO , C^{18}O , N_2H^+ , HC_3N and CCS with the FOREST receiver. The full width at half maximum (FWHM) beam size of NRO 45-m telescope at 86 GHz is $\sim 18''.8$ and the main beam efficiency is $\sim 54\%$. Adding 115 Orion cores already observed in single-pointing mode, we will have 215 single-pointing positions data. By using DNC and N_2D^+ intensities and CEF for DNC/ HN^{13}C , we will select the best targets of 35 cores for OTF mapping with the four-beam 2SB 2-polarization receiver FOREST. By applying Chemical Evolution Factor (CEF) we developed (Tatematsu et al. 2017), we should be able to identify cores on the verge of massive star formation. From deuterium fractionation, we can identify the earliest protostellar phase. We will confirm/revise CEF by observing Orion cores having similar distances. The chemical nature of cores including deuterium fractionation will be investigated. Core stability will be investigated to see how star formation starts. Dynamics of parent filaments will be investigated

to see if there is accretion onto cores. Coefficient of the linewidth-size relation will be compared among different environments to see its meaning in star formation. Specific angular momentum will be compared among regions.

The large proposal requesting 350 hrs over two years since December 2017 was accepted for such follow-up observations. The NRO 45-m observations of the exemplar source, PGCC G26.53+0.17, have not yet been conducted. Therefore, no results from NRO 45-m observations on PGCC G26.53+0.17 will be presented in this paper. Some pilot studies with NRO 45-m telescope toward SCUBA-2 dense cores in PGCCs were presented in Tatematsu et al. (2017).

4. EXAMPLE SCIENCE WITH AN EXEMPLAR SOURCE, PGCC G26.53+0.17

Through the TOP-SCOPE survey and follow-up observations with other telescopes (e.g., SMT, KVN and NRO 45-m), we aim to statistically investigate the physical and chemical properties of thousands of dense clumps in widely different environments. Those studies will help answer the questions raised at the beginning of this paper. The full scientific exploitation of the TOP-SCOPE survey data will only be possible upon the completion of the survey. In this paper, we introduce the survey data, data analysis, and example science cases of the above surveys with an exemplar source, PGCC G26.53+0.17 (hereafter denoted as G26). Located at a distance of 4.2 ± 0.3 kpc, G26 has a mass of $\sim 5200 M_\odot$ and a very low luminosity-to-mass ratio of $\sim 1.4 L_\odot/M_\odot$ (Planck Collaboration XXVIII 2016). The distance is estimated using the near-infrared extinction (Planck Collaboration XXVIII 2016). The kinematic distance is 3.2-3.4 kpc (Peretto et al., in preparation; Planck Collaboration XXVIII 2016). In this paper, we adopt the distance of 4.2 kpc to be consistent with Planck Collaboration XXVIII (2016). The spatial resolution of SCUBA-2 at $850 \mu\text{m}$ is ~ 0.3 pc at this distance, which is high enough to resolve massive clumps with sizes of ~ 1 pc. As shown in Figure 4, G26 is a filamentary infrared dark cloud (IRDC; Peretto & Fuller (2009)) with a length of $\sim 10'$, corresponding to ~ 12 pc at a distance of 4.2 kpc. G26 was observed as part of the “TOP,” “SCOPE,” “SAMPLING,” and KVN surveys. The observations of G26 are summarized in Table A1 in Appendix A. The data reduction of JCMT/SCUBA-2 data will be presented in Section 6.2 in Appendix A. The methods used for G26 JCMT/SCUBA-2 data analysis in this work will also be applied to other targets in the “TOP-SCOPE” survey.

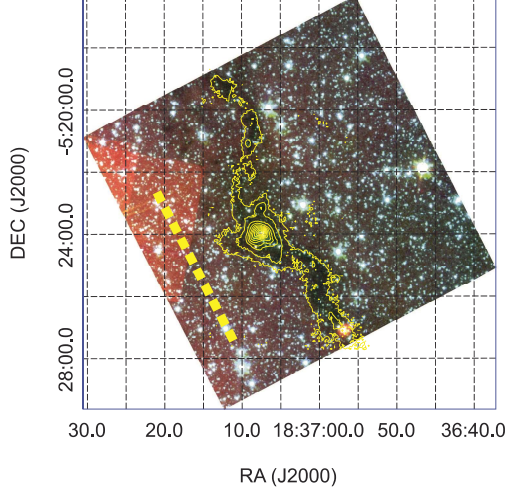


Figure 4. Spitzer/IRAC three color (3.6 μm in blue, 4.5 μm in green, and 8 μm in red) composite image of PGCC G26.53+0.71. The yellow contours represent the SCUBA-2 850 μm continuum emission with filtering out scales of $>200''$. The contour levels are $[0.03, 0.05, 0.1, 0.2, 0.4, 0.6, 0.8] \times 1.38 \text{ Jy beam}^{-1}$. The yellow dashed line shows the direction of the Galactic Plane.

4.1. SEDs using filtered Herschel and SCUBA-2 maps

The high-resolution SCUBA-2 850 μm data filtered out large-scale extended emission and thus are sensitive to the denser structures (filaments, cores, or clumps) in molecular clouds. The 850 μm data are also important in providing high-resolution information about the dust emission at a wavelength that lies in the regime between the far-infrared part (e.g., Herschel) and the millimetre part of the dust emission spectrum. One of the main goals of the “SCOPE” survey is to provide high-quality 850 μm data to constrain better the dust emission spectrum of dense structures in molecular clouds.

In this section, we fit the SEDs pixel-by-pixel with a modified blackbody function using four or five bands, combining SCUBA-2 measurements and fluxes extracted from Herschel maps that have been run through the SCUBA-2 pipeline. The algorithm of the SED fit is the same as in section 6.1 in Appendix A. The Herschel and SCUBA-2 data with the subtraction of the local background were fitted with modified blackbody spectra with $\beta = 1.8$ to estimate colour correction factors and to derive estimates of the dust optical depth at a common spatial resolution of $40''$. In Section 4.3, we fit the SEDs with free β to investigate the dust grain properties. The details of the SED fits using filtered Herschel and SCUBA-2 maps will be discussed in Juvela et al. (2017). In this paper, we performed four individual SCUBA-2 data reductions labeled **R1**, **R2**, **R3**, and **R4** with different external masks and

spatial filters (see section 6.2 in Appendix A for details). **R1** with a spatial filter of $200''$ is very efficient to identify dense clumps/cores and is used for creating dense core/clump catalogues in our first data release to the team. However, here we fit the SEDs with datasets obtained from two other data reduction methods (**R2**, **R4**), which use larger spatial filters ($300''$ and $600''$) and thus can recover more flux. We applied two sets of SED fits (**S1** and **S2**) using different datasets.

(1) **S1**: Herschel 160-500 μm data and SCUBA-2 850 μm data in the **R2** data reduction (see section 6.2 in Appendix A) were used. The extended emission larger than $300''$ in the Herschel and SCUBA-2 maps was filtered out.

(2) **S2**: Herschel 160-500 μm data and SCUBA-2 850 μm data in the **R4** data reduction (see section 6.2 in Appendix A) were used. The extended emission larger than $600''$ in the Herschel and SCUBA-2 maps was filtered out.

Figure 5 a-b show the dust temperature (T_d) and 250 μm optical depth (τ_{250}) maps from the two SED fits. The T_d values across the filament ridge are around 10-14 K except for the dense clumps located in the central region (~ 17 K) and the southern end (~ 19 K), where protostars have formed and heated their local surroundings. The less dense region to the east of the filament ridge has higher T_d than the dense filament, indicating that the filament is externally heated from its eastern side.

The T_d and τ_{250} maps are quite different from SED fits with different effective spatial filters. In Figure 5 c-d, we compare the T_d and τ_{250} values from SED fits **S1** and **S2** for pixels with $S/N > 5$ in the SCUBA-2 map from the **R2** imaging scheme. The mean dust temperature from **S1** and **S2** is 13.7 and 14.3 K, respectively. In comparison, the mean τ_{250} (or column density N) in **S1** and **S2** is 6.5×10^{-3} (or $N \sim 1.0 \times 10^{22} \text{ cm}^{-2}$) and 8.3×10^{-3} (or $N \sim 1.3 \times 10^{22} \text{ cm}^{-2}$), respectively. In contrast to **S1**, **S2** increases the T_d in cold regions (with $T_d < 15$ K). While in warmer regions (with $T_d > 15$ K), the T_d determined in **S1** and **S2** does not vary too much. **S2** significantly increases τ_{250} by 0.003 (or $N \sim 4.6 \times 10^{21} \text{ cm}^{-2}$) than **S1** in dense regions (with $\tau_{250} \sim 0.01$ or $N \sim 1.5 \times 10^{22} \text{ cm}^{-2}$ in **S2** map). The peak column densities in **S1** and **S2** are $3.8 \times 10^{22} \text{ cm}^{-2}$ and $4.2 \times 10^{22} \text{ cm}^{-2}$, respectively. In less dense regions, **S2** also significantly increases τ_{250} but not as much as in dense regions.

SED fits with large effective spatial filters ($600''$; Figure 5b) recovered more extended structure and thus more mass. The total mass of the G26 filament revealed in **S2** is $\sim 6200 M_\odot$. Given the length ($L \sim 12$ pc) of the filament, the mean line-mass (M/L) of the filament

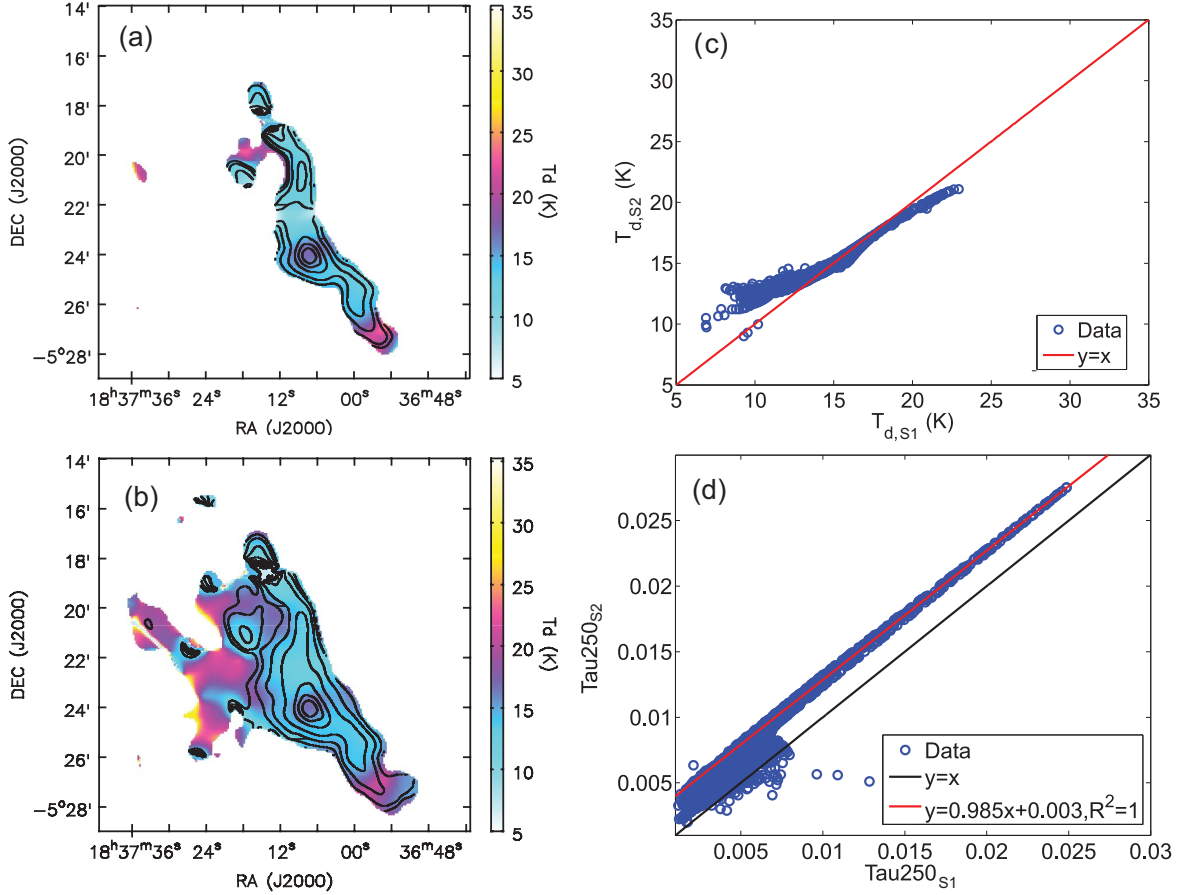


Figure 5. (a). The dust temperature map in the $S1$ SED fit is shown in color-scale image. The $250\ \mu\text{m}$ optical depth is shown in contours. The contour levels are $[0.03, 0.05, 0.1, 0.2, 0.4, 0.6, 0.8] \times 0.0270$ (b). The dust temperature map in the $S2$ SED fit is shown in color-scale image. The $250\ \mu\text{m}$ optical depth is shown in contours. The contour levels are $[0.03, 0.05, 0.1, 0.2, 0.4, 0.6, 0.8] \times 0.0275$ (c). Comparison of the dust temperature values in $S1$ and $S2$. Only data points with $S/N > 5$ in SCUBA-2 map are considered. (d). Comparison of the $250\ \mu\text{m}$ optical depth in $S1$ and $S2$. Only data points with $S/N > 5$ in SCUBA-2 map are considered. The red line shows the linear fit toward the data points with $250\ \mu\text{m}$ optical depth larger than 0.01 in $S4$.

is $\sim 500\ M_\odot\ \text{pc}^{-1}$. For comparison, both the length and line-mass of G26 are comparable to those ($L \sim 8\ \text{pc}$; $M/L \sim 400\ M_\odot\ \text{pc}^{-1}$) of the integral shaped filament in the Orion A cloud (Bally et al. 1987; Kainulainen et al. 2017).

4.2. Dense clumps

The “SCOPE” survey aims to obtain a census of “all-sky” distributed dense clumps and cores. Since PGCC sources trace some of the coldest ISM in the Galaxy, an extensive survey of PGCC sources is able to provide us with a number of candidates of clumps and cores at their earliest evolutionary phases. In nearby clouds, we expect to discover a population of prestellar core candidates or extremely young (e.g., Class 0) protostellar objects (Liu et al. 2016; Tatematsu et al. 2017). In Galactic Plane PGCCs, we are particularly interested in searching for massive clumps

or cores that may represent the initial conditions of high-mass star formation. Below, we demonstrate the source extraction process based on the G26 SCUBA-2 images. The properties of clumps identified in G26 will also be investigated.

Extraction of the dense clumps was done using the FELLWALKER (Berry 2015) source-extraction algorithm, part of the Starlink CUPID package (Berry 2007). The core of the FellWalker algorithm is a gradient-tracing scheme consisting of following many different paths of steepest ascent in order to reach a significant summit, each of which is associated with a clump (Berry 2007). FellWalker is less dependent on specific parameter settings than CLUMPFIND (Berry 2007). The source-extraction process with FellWalker in the SCOPE survey is the same as that used by the JCMT Plane Survey and details can be found in Moore et al. (2015); Eden et al. (2017).

Table 1. Parameters of dense clumps

| Clump No. | RA (J2000) | DEC (J2000) | θ_{maj} ($''$) | θ_{min} ($''$) | P.A. ($^{\circ}$) | R_{eff} (pc) | F_{peak} (Jy beam $^{-1}$) | F_{int} (Jy) | SNR | T_d^a (K) | M (M_{\odot}) | n (10^4 cm $^{-3}$) | N (10^{22} cm $^{-2}$) | M_{Jeans} (M_{\odot}) |
|------------------|---------------|----------------|----------------------------|----------------------------|------------------------|-------------------|----------------------------------|-------------------|-----|----------------|----------------------|----------------------------|-------------------------------|--------------------------------|
| <i>R1</i> | | | | | | | | | | | | | | |
| 1 | 18:37:12.00 | -05:19:12.0 | 15 | 11 | 142 | <0.26 | 0.10(0.01) | 0.23(0.01) | 7 | 10 | 89 | >2.1 | >2.2 | <2 |
| 2 | 18:37:08.40 | -05:20:27.6 | 19 | 9 | 108 | <0.27 | 0.14(0.02) | 0.35(0.02) | 11 | 13 | 82 | >1.7 | >1.9 | <3 |
| 3 | 18:37:09.36 | -05:21:03.6 | 14 | 13 | 108 | <0.27 | 0.17(0.02) | 0.30(0.02) | 13 | 13 | 70 | >1.5 | >1.6 | <3 |
| 4 | 18:37:09.12 | -05:21:54.0 | 12 | 10 | 191 | <0.22 | 0.07(0.01) | 0.10(0.01) | 5 | 12 | 27 | >1.1 | >1.0 | <4 |
| 5 | 18:37:07.44 | -05:23:09.6 | 10 | 8 | 242 | <0.18 | 0.25(0.03) | 0.32(0.02) | 20 | 13 | 75 | >5.3 | >3.9 | <2 |
| 6 | 18:37:07.68 | -05:23:56.4 | 29 | 20 | 133 | 0.40 | 1.35(0.14) | 4.38(0.22) | 103 | 17 | 654 | 4.2 | 7.0 | 3 |
| 7 | 18:37:02.64 | -05:24:39.6 | 10 | 7 | 167 | <0.17 | 0.11(0.01) | 0.16(0.01) | 9 | 13 | 37 | >3.2 | >2.2 | <2 |
| 9 | 18:37:00.48 | -05:25:40.8 | 27 | 13 | 90 | 0.25 | 0.14(0.01) | 0.70(0.04) | 11 | 14 | 144 | 3.8 | 3.9 | 2 |
| 10 | 18:36:57.84 | -05:26:56.4 | 21 | 12 | 125 | 0.15 | 0.14(0.01) | 0.46(0.02) | 11 | 19 | 58 | 7.1 | 4.4 | 3 |
| <i>R2</i> | | | | | | | | | | | | | | |
| 1 | 18:37:12.00 | -05:19:15.6 | 24 | 16 | 211 | 0.28 | 0.12(0.01) | 0.44(0.02) | 8 | 10 | 170 | 3.2 | 3.7 | 2 |
| 2 | 18:37:08.64 | -05:20:20.4 | 22 | 11 | 112 | 0.13 | 0.16(0.02) | 0.51(0.03) | 10 | 13 | 119 | 22.5 | 12.0 | 1 |
| 3 | 18:37:09.36 | -05:21:03.6 | 22 | 14 | 143 | 0.21 | 0.20(0.03) | 0.53(0.03) | 13 | 13 | 124 | 5.6 | 4.8 | 2 |
| 4 | 18:37:09.12 | -05:21:54.0 | 25 | 14 | 155 | 0.25 | 0.11(0.01) | 0.47(0.02) | 7 | 12 | 127 | 3.4 | 3.5 | 2 |
| 5 | 18:37:07.44 | -05:23:09.6 | 15 | 11 | 254 | <0.26 | 0.31(0.04) | 0.60(0.03) | 20 | 13 | 140 | >3.3 | >3.5 | <2 |
| 6 | 18:37:07.68 | -05:23:56.4 | 39 | 27 | 147 | 0.60 | 1.40(0.12) | 6.41(0.32) | 88 | 17 | 957 | 1.8 | 4.5 | 5 |
| 7 | 18:37:02.64 | -05:24:39.6 | 19 | 15 | 126 | 0.19 | 0.17(0.01) | 0.71(0.04) | 11 | 13 | 166 | 10.0 | 7.8 | 1 |
| 9 | 18:37:00.48 | -05:25:40.8 | 22 | 17 | 247 | 0.27 | 0.17(0.02) | 0.93(0.05) | 10 | 14 | 191 | 4.0 | 4.5 | 2 |
| 10 | 18:36:57.60 | -05:26:56.4 | 24 | 17 | 142 | 0.29 | 0.18(0.01) | 0.91(0.05) | 11 | 19 | 115 | 1.9 | 2.3 | 5 |
| <i>R3</i> | | | | | | | | | | | | | | |
| 3 | 18:37:09.36 | -05:21:03.6 | 26 | 18 | 266 | 0.33 | 0.23(0.03) | 1.20(0.06) | 7 | 14 | 247 | 2.8 | 3.9 | 3 |
| 5 | 18:37:07.44 | -05:23:09.6 | 22 | 13 | 230 | 0.19 | 0.38(0.05) | 1.12(0.06) | 12 | 14 | 230 | 13.9 | 10.9 | 1 |
| 6 | 18:37:07.68 | -05:23:56.4 | 57 | 42 | 170 | 0.95 | 1.47(0.12) | 11.44(0.57) | 47 | 17 | 1708 | 0.8 | 3.2 | 7 |
| 7 | 18:37:02.64 | -05:24:39.6 | 15 | 10 | 213 | <0.25 | 0.21(0.02) | 0.52(0.03) | 7 | 14 | 107 | >2.8 | >2.9 | <3 |
| 8 | 18:37:00.72 | -05:25:01.2 | 32 | 26 | 209 | 0.51 | 0.22(0.02) | 2.20(0.11) | 7 | 14 | 452 | 1.4 | 3.0 | 4 |
| 10 | 18:36:57.60 | -05:26:56.4 | 41 | 32 | 179 | 0.68 | 0.24(0.01) | 2.42(0.12) | 8 | 19 | 305 | 0.4 | 1.1 | 11 |
| <i>R4</i> | | | | | | | | | | | | | | |
| 1 | 18:37:12.24 | -05:19:12.0 | 23 | 21 | 160 | 0.34 | 0.16(0.01) | 1.04(0.05) | 5 | 12 | 281 | 3.0 | 4.2 | 2 |
| 3 | 18:37:09.36 | -05:21:03.6 | 31 | 23 | 103 | 0.46 | 0.26(0.03) | 1.96(0.10) | 9 | 14 | 403 | 1.7 | 3.2 | 4 |
| 4 | 18:37:09.12 | -05:21:57.6 | 23 | 15 | 210 | 0.25 | 0.18(0.02) | 0.96(0.05) | 6 | 13 | 225 | 6.0 | 6.1 | 2 |
| 5 | 18:37:07.44 | -05:23:09.6 | 25 | 14 | 223 | 0.25 | 0.40(0.05) | 1.32(0.07) | 13 | 14 | 271 | 7.2 | 7.4 | 2 |
| 6 | 18:37:07.68 | -05:23:56.4 | 69 | 49 | 145 | 1.15 | 1.48(0.12) | 13.87(0.69) | 49 | 17 | 2071 | 0.6 | 2.7 | 8 |
| 7 | 18:37:02.64 | -05:24:39.6 | 17 | 9 | 210 | <0.25 | 0.21(0.02) | 0.55(0.03) | 7 | 14 | 113 | >3.0 | >3.1 | <3 |
| 8 | 18:37:00.72 | -05:25:01.2 | 38 | 27 | 217 | 0.59 | 0.23(0.02) | 2.43(0.12) | 8 | 14 | 499 | 1.0 | 2.4 | 5 |
| 10 | 18:36:57.60 | -05:26:56.4 | 49 | 36 | 178 | 0.81 | 0.25(0.01) | 3.60(0.18) | 8 | 19 | 453 | 0.4 | 1.2 | 12 |

^a T_d in ***R1*** & ***R2*** is derived from SED fit ***S1***. T_d in ***R3*** & ***R4*** is derived from SED fit ***S2***.

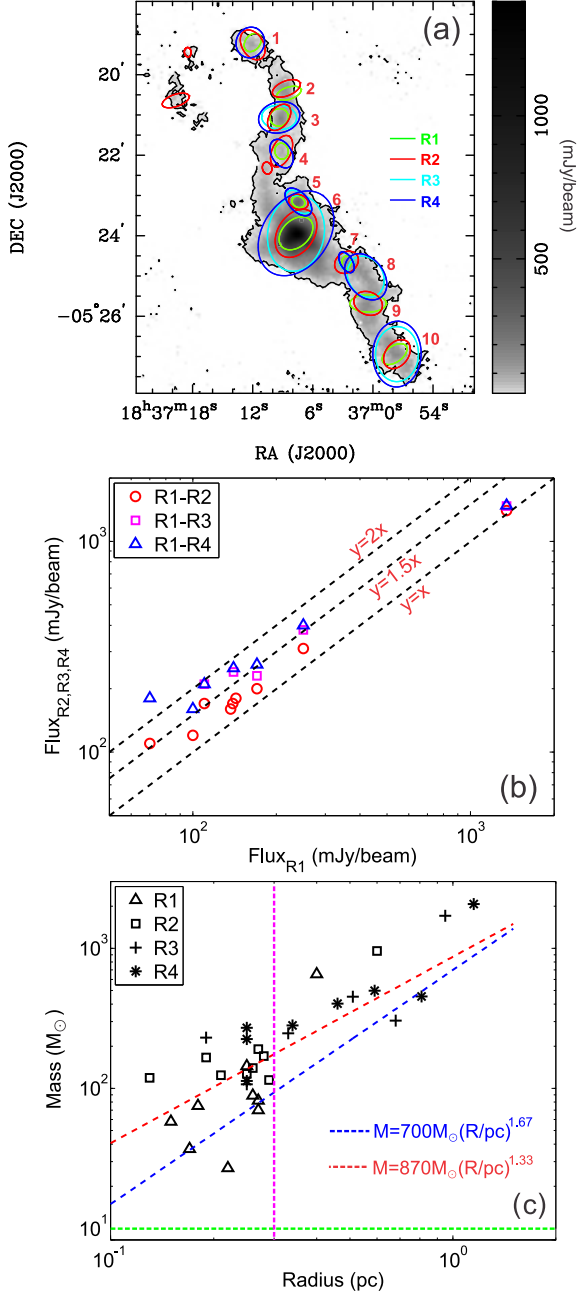


Figure 6. (a). The 850 μm continuum emission in the **R2** reduction is shown in gray-scale and black contours. The contour levels are the same as in the lower panel of Figure A2. The green, red, cyan, and blue ellipses represent the dense clumps identified in the 850 μm continuum emission maps from the **R1**, **R2**, **R3** and **R4** reductions, respectively. (b). Comparison of the peak fluxes of dense clumps in different data reductions. (c). Mass-Radius relation of the dense clumps. The red dashed line shows a threshold to form high-mass protostars (Kauffmann & Pillai 2010). The blue dashed line shows the radius-mass relation for the clumps which undergo quasi-isolated gravitational collapse in a turbulent medium (Li 2017). Here we remind readers that the spatial resolution (beam size; magenta dashed line) of SCUBA-2 at 850 μm is ~ 0.3 pc and the 3σ mass sensitivity (black dashed line) is ~ 10 M_{\odot} (assuming $T_d=10$ K) at the distance of 4.2 kpc.

A mask constructed above a threshold of 3σ (i.e., three times the pixel-to-pixel noise) in the SNR map is applied to the intensity map as input for the task CUPID:EXTRACTCLUMPS, which extracts the peak and integrated flux-density values of the clumps. A further threshold for CUPID:FINDCLUMPS was the minimum number of contiguous pixels, which was set at 12 corresponding to the number of pixels expected to be found in an unresolved source with a peak SNR of 5σ , given a 14-arcsec beam and 4-arcsec pixels. The cores close to the map edges which are associated with artificial structures were further removed manually.

In total, ten clumps were identified from the SCUBA-2 images. Those ten clumps can be identified in at least two of the SCUBA-2 data reductions (**R1**, **R2**, **R3** and **R4**; see section 6.2 in Appendix A). Figure 6a presents the distributions of these ten clumps on the 850 μm image from the **R2** reduction. From checking Spitzer (see Figure 4) and the Herschel/PACS 70 μm data, we found that clumps “6” and “10” are associated with young stellar objects, while the others are likely starless. The parameters of these clumps are summarized in Table 1. The effective radius is defined as $R_{\text{eff}} = \sqrt{ab}$, where a and b are the deconvolved FWHM sizes of the clump major and minor axes. The clump masses (M) are derived with Equation A1 in Appendix A with total fluxes of 850 μm continuum emission from the SCUBA-2. The radii and masses are listed in the 7th and 12th columns of Table 1, respectively. The particle number density (n) and column density (N) were calculated as $n = \frac{M}{\frac{4}{3}\pi R_{\text{eff}}^3 \mu m_H}$ and $N = \frac{M}{\pi R_{\text{eff}}^2 \mu m_H}$, respectively, where $\mu = 2.37$ is the mean molecular weight per “free particle” (H_2 and He) and m_H is the atomic hydrogen mass.

Figure 6b compares the peak fluxes of the dense clumps in different imaging schemes, respectively. In general, applying larger spatial filters increases the peak fluxes particularly for less dense clumps. The peak flux of the most massive clump “6” does not change too much ($<10\%$) in different imaging schemes. In contrast to **R1**, however, the peak fluxes of other less dense clumps increased by $\sim 20\%$ - 50% in **R2**, and by 50% to 100% in **R3** and **R4**. Imaging scheme **R1** is used in the first data release of the SCOPE survey. **R1** is very efficient to detect dense clumps but cannot well recover flux from extended structures. Therefore, we suggest to use external masks and larger spatial filtering in SCUBA-2 data reduction to recover more flux if Herschel data are available.

Figure 6c presents the mass-radius relation for the dense clumps. In general, larger scales kept by spatial filtering lead to larger masses and radii. The red

dashed line shows a density threshold for high-mass star formation (Kauffmann & Pillai 2010). Except for clump “6”, all the other clumps in **R1** are below this threshold. Most clumps, however, will move above the empirical threshold when larger scales are kept by the spatial filtering, as in **R2**, **R3**, and **R4**. Most clumps (revealed in **R2**, **R3**, and **R4**) are above the predicted mass-radius relation for clumps undergoing quasi-isolated gravitational collapse in a turbulent medium (Li 2017). The clumps in G26 especially the dense and massive ones are very likely bounded by gravity and have ability to form high-mass stars.

We derived the thermal Jeans masses $M_J = 0.877 M_\odot (\frac{T}{10K})^{3/2} (\frac{n}{10^5 \text{ cm}^{-3}})^{-1/2}$ following Wang et al. (2014). The resulting n , N and M_J are listed in the last three columns in Table 1. The clump masses are also about one order of magnitude larger than the corresponding thermal Jeans masses. The clumps are all located along the filament with a mean separation of ~ 1.3 pc, which is much larger than the thermal Jeans length (~ 0.1 pc for $T=14$ K and the mean volume density $n=6.2 \times 10^4 \text{ cm}^{-3}$ for clumps in **R2**), indicating that fragmentation in G26 is not governed by thermal instability but determined by other factors like turbulence or magnetic fields, as revealed in other IRDCs (e.g., Wang et al. 2011, 2014; Contreras et al. 2016).

The so-called “sausage instability” of a gas cylinder proposed by Chandrasekhar & Fermi (1953) and promoted by many others (e.g., Stodólkiewicz 1963; Ostriker et al. 1964; Inutsuka & Miyama 1992; Fiege & Pudritz 2000; Fischera & Martin 2012) has been often applied for studies of the fragmentation in filamentary clouds (e.g., Jackson et al. 2010; Wang et al. 2011, 2014; Liu et al. 2017). In this scenario, an isothermal, hydrostatic, non-magnetised, infinite filament becomes unstable and fragments into a chain of equally spaced fragments if its mass per unit length along the cylinder (or linear mass density) is close enough to the critical value so that perturbations in the filament have time to grow. In G26, the mean spacing and mass of clumps in G26 are ~ 1.3 pc and $\sim 540 M_\odot$, respectively, which were derived for clumps in **R4** reduction. The fragment mass in cylindrical fragmentation can be estimated as $M_{\text{cl}} = 575.3 M_\odot (\frac{\sigma}{1 \text{ km s}^{-1}})^3 (\frac{n_c}{10^5 \text{ cm}^{-3}})^{-1/2}$; The typical spacing in cylindrical fragmentation is $\lambda_{\text{cl}} = 1.24 \text{ pc} (\frac{\sigma}{1 \text{ km s}^{-1}}) (\frac{n_c}{10^5 \text{ cm}^{-3}})^{-1/2}$ (Wang et al. 2014). σ is the 1-D velocity dispersion and n_c is the volume density at the centre of the cylinder. Here we take n_c as the mean number density ($6.2 \times 10^4 \text{ cm}^{-3}$) for clumps identified in **R2** reduction because **R2** filtered more extended emission than **R4** and thus the mean

number density for clumps in **R2** is much closer to the volume density at the centre of the cylinder. If we only consider thermal pressure (assuming $T=14$ K), the σ , M_{cl} and λ_{cl} are 0.22 km s^{-1} , $7.8 M_\odot$, and 0.35 pc . The M_{cl} and λ_{cl} are much smaller than the observed values in G26, indicating that thermal pressure alone cannot govern the fragmentation. However, if we also consider turbulent support, the σ , M_{cl} and λ_{cl} will become $\sim 0.94 \text{ km s}^{-1}$ (estimated from C¹⁸O line width; see Table 2), $600 M_\odot$ and 1.5 pc . The M_{cl} and λ_{cl} derived from turbulence-dominated cylindrical fragmentation are very consistent with the observed values ($\sim 540 M_\odot$ and $\sim 1.3 \text{ pc}$), suggesting that the fragmentation in G26 from cloud (at $\sim 10 \text{ pc}$ scale) to clumps (at $\sim 1 \text{ pc}$ scale) is very likely dominated by turbulence in the absence of magnetic fields. Limited by the spatial resolution ($\sim 0.3 \text{ pc}$ at the distance of 4.2 kpc) and mass sensitivity (3σ mass sensitivity is $\sim 10 M_\odot$), we cannot study fragmentation from clump scale to core scale (at $\sim 0.1 \text{ pc}$ scale) with present data. Further fragmentation below the completeness and resolution limit of the present data is very likely to take place as seen in other IRDCs (Wang et al. 2011, 2014). The hierarchical fragmentation in G26 at all spatial scales can only be studied from higher spatial resolution interferometric observations.

4.3. Evidence for grain growth

Observationally, dust properties (e.g., opacity) greatly affect the determination of density and temperature profiles of dense cores, and therefore influence the estimation of core masses. The dust grain size distributions in molecular clouds and cores can change with time because of grain sputtering, shattering, coagulation, and growth (Ormel et al. 2009). Grain growth in the densest and coldest regions of interstellar clouds has been evidenced by an increase in the far-infrared opacity (Juvela et al. 2015b). Indeed, the dust spectral index (β) and its temperature (T_d) dependence can provide additional information on the chemical composition, structure, and the size distribution of interstellar dust grains (Juvela et al. 2011). This dust emissivity change has been attributed to the formation of fluffy aggregates in the dense medium, resulting from grain coagulation.

Recently, Juvela et al. (2015b) studied dust optical depths by comparing measurements of submillimetre dust emission and the reddening of the light of background stars in the near-infrared (NIR) for a sample of 116 PGCCs in Herschel fields. In their studies, there are indications that β increases towards the coldest regions and decreases strongly near internal heating sources. Although NIR reddening is an independent and reliable

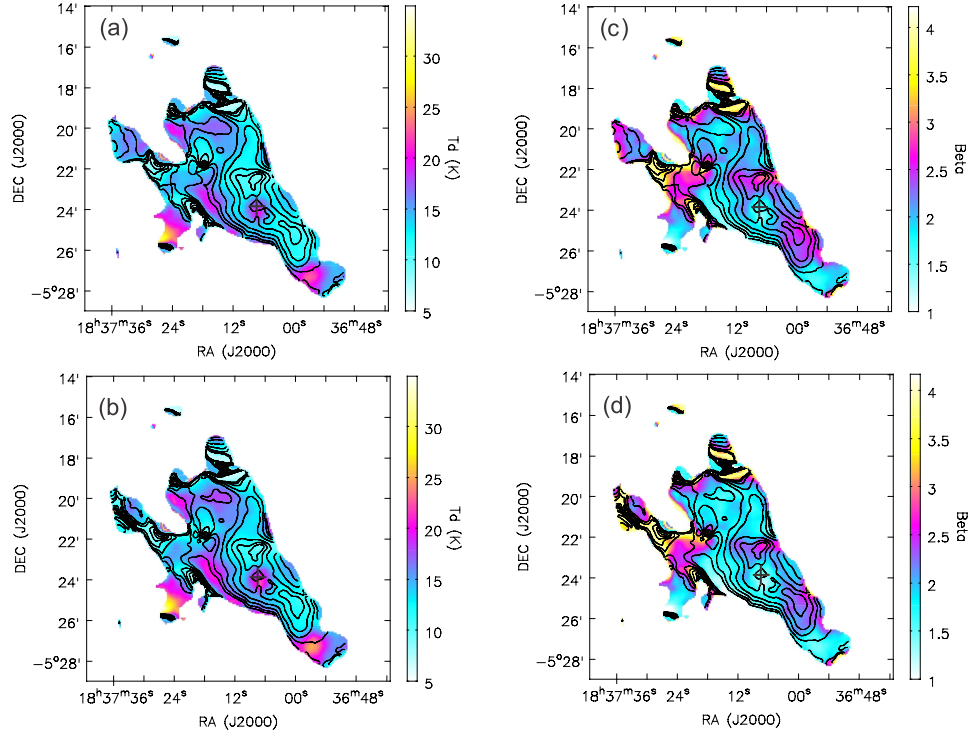


Figure 7. (a). The dust temperature map in the SED fit with free β using the Herschel data only is shown in color image. The $250\ \mu\text{m}$ optical depth is shown in contours. The contour levels are $[0.03, 0.05, 0.1, 0.2, 0.4, 0.6, 0.8] \times 0.0282$ (b). The dust temperature map in the SED fit with free β using both the Herschel and SCUBA-2 data is shown in color image. The $250\ \mu\text{m}$ optical depth is shown in contours. The contour levels are $[0.03, 0.05, 0.1, 0.2, 0.4, 0.6, 0.8] \times 0.0211$ (c). The β map in the SED fit with free β using the Herschel data only is shown in color image. The $250\ \mu\text{m}$ optical depth is shown in contours. The contour levels are the same as in panel a. (d). The β map in the SED fit with free β using both the Herschel and SCUBA-2 data is shown in color image. The $250\ \mu\text{m}$ optical depth is shown in contours. The contour levels are the same as in panel b. The crosses in the four panels mark the position of the most massive clump.

measure of column density, NIR extinction could not, however, trace the densest portion of the cloud due to low resolution. Additionally, the Herschel $250\ \mu\text{m}$ band is less sensitive to very cold dust and may completely miss the highest column density peak (see Figure 2 in Papani et al. 2015). Herschel $500\ \mu\text{m}$ data could trace cold dust well but have relatively low angular resolution ($35''$). Adding high resolution photometric data at longer wavelengths (e.g. $850\ \mu\text{m}$ from SCUBA-2) could help more accurately derive the dust spectral index, dust temperature, and column density (N_{H_2}) simultaneously (Sadavoy et al. 2013; Chen et al. 2016).

For PGCC sources having Herschel data in the “SCOPE” survey, we will determine the dust emissivity spectral index (β), dust temperature (T_d), and column density (N_{H_2}) simultaneously by combining $850\ \mu\text{m}$ data with spatially-filtered Herschel photometric data. Since the PGCC sources are at different stages of cloud evolution from starless clumps to protostellar cores and are located in different Galactic environments, we will search for variations of β that might be attributed to the evolutionary stage of the sources or to environmental

factors, including the location within the Galaxy and stellar feedback. A pilot study of dust properties toward ~ 100 PGCCs with Herschel data and SCUBA-2 data will be presented in Juvela et al. (2017). Below we investigate the dust properties of G26 as an example.

In Figure 7, we present the T_d , β , and τ_{250} maps of G26 from SED fits with free β and T_d . The extended emission larger than $600''$ in the Herschel and SCUBA-2 maps (from imaging scheme **R4**; see section 6.2 in Appendix A) was filtered out. In general, the β map is anti-correlated with the T_d map. The most massive core, marked with a black cross, clearly shows higher temperature and lower β than its surroundings. The low β may indicate grain growth during core or star formation. Figure 8 a-b show histograms of T_d and β . Only the data points with $S/N > 10$ in the SCUBA-2 map, corresponding to the ridge region of the filament, are included in the statistics. In general, including $850\ \mu\text{m}$ data tends to increase the T_d by $\sim 1\ \text{K}$ and lower β by ~ 0.3 . The dust temperature histograms show a high temperature tail, which is caused by on-going star formation. Interestingly, the β histograms can be

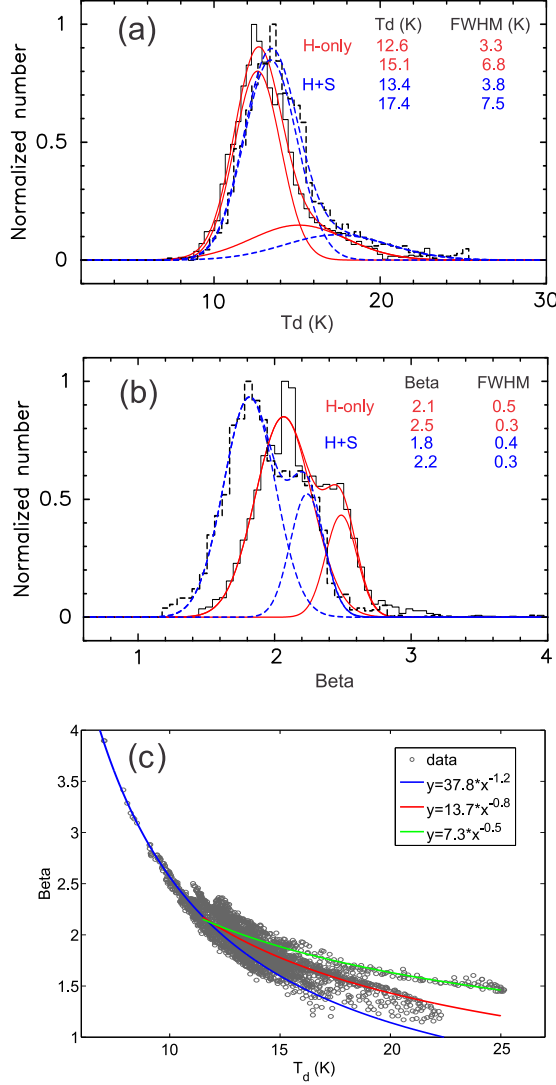


Figure 8. (a). Histograms of T_d . The T_d in the SED fit with free β using the Herschel data only is shown in solid lines, while the T_d in the SED fit with free β using both the Herschel and SCUBA-2 data is shown in dashed lines. The red and blue color lines show the normal distribution fits. (b). Histograms of β . The β in the SED fit with free β using the Herschel data only is shown in solid lines, while the β in the SED fit with free β using both the Herschel and SCUBA-2 data is shown in dashed lines. The red and blue color lines show the normal distribution fits. (c). Spectral index β vs. dust temperature T_d in the SED fit with free β using both the Herschel and SCUBA-2 data. The blue line shows the power-law fit toward the data with $T_d < 10$ K. The red line shows the power-law fit toward the data with $T_d > 10$ K. The green line outlines the trend for the data with $T_d > 15$ K and high β .

well fitted with two normal distributions regardless of whether or not $850 \mu\text{m}$ data were included in the SED fits. Such a bimodal behavior in β distribution may suggest grain growth along the filament.

Figure 8c presents the correlation between T_d and β . β is generally anti-correlated with T_d . Interestingly, the β vs. T_d correlations can be roughly depicted with three power-laws, which again indicates the existence of different kinds of dust grains in the filament. Such an anti-correlation between T_d and β was also found in all Perseus clumps (Chen et al. 2016). Chen et al. (2016) also found that these anti-correlations cannot be solely accounted for by anti-correlated T_d and β uncertainties associated with SED fitting. The anti-correlation may be partially explained by the dust grains' intrinsic β dependency on temperature but more likely by the sublimation of surface ice mantles, which can increase β when present on a dust grain (Chen et al. 2016). A thorough investigation of the correlation between T_d and β is beyond the scope of this paper. We will systematically study this issue in the future with more “SCOPE” objects.

4.4. Cloud structure

To understand better the star or core formation process, it is crucially important to study their parent molecular cloud properties. SCUBA-2 has better resolution and longer wavelengths than Herschel/SPIRE bands, and thus is more suitable to trace the cold ISM. Due to variations of the atmosphere which mimic emission from extended astronomical objects, SCUBA-2 data are not well suited to capture the extended structures in molecular clouds. The loss of the filtered emission by SCUBA-2, however, can be somewhat corrected based on the Planck data. The combined *Planck* 353 GHz data and the SCUBA-2 $850 \mu\text{m}$ data will be used to investigate the density distribution and structures at various cloud scales. Below we use G26 to demonstrate the combination of the Planck and SCUBA-2 data.

We combined the *Planck* 353 GHz image with the SCUBA-2 $850 \mu\text{m}$ images in the **R2** and **R4** reductions following the same procedure as in Lin et al. (2016, 2017). In principle, the data combination was performed in the Fourier domain, yielding high-resolution ($14''$) combined data that have little or no loss of extended structure (Lin et al. 2016, 2017). The combined images are shown in Figure 9a. In general, the two images show very similar morphology and flux density. From these combined images, we find that the dense filament resides in a cloud with very smooth structures. The cloud boundary is well enclosed by the 10% contours in

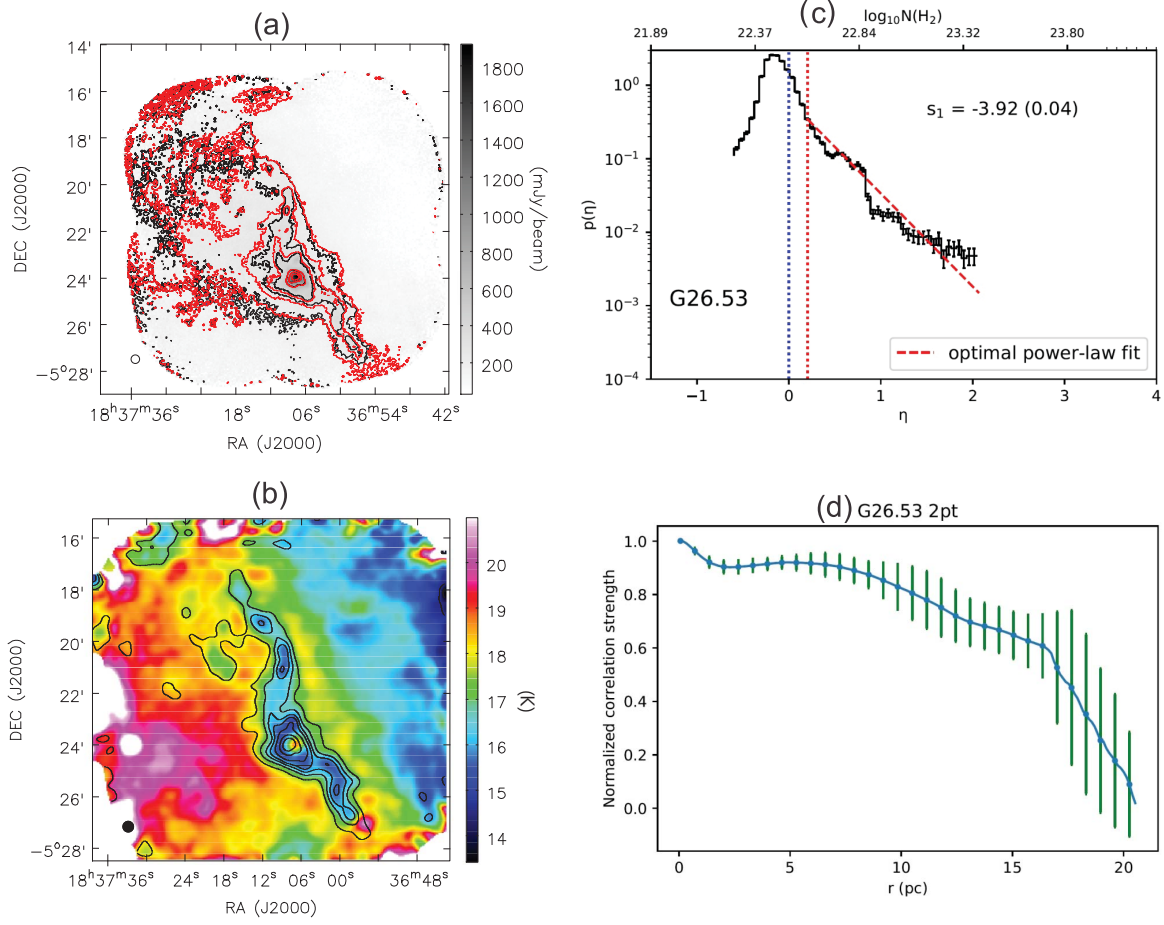


Figure 9. (a). The gray-scale image and black contours show the 850 μm continuum emission from combined Planck data and SCUBA-2 data in **R2**. The contour levels are $[0.1, 0.15, 0.2, 0.4, 0.6, 0.8] \times 1.92 \text{ Jy beam}^{-1}$. The red contours show the 850 μm continuum emission from combined Planck data and SCUBA-2 data in **R4**. The contour levels are $[0.1, 0.15, 0.2, 0.4, 0.6, 0.8] \times 1.97 \text{ Jy beam}^{-1}$. (b). The dust temperature map from SED fits with Herschel and combined Planck and SCUBA-2 850 μm data in **R2** is shown in color image. The column density map is shown in contours. The contour levels are $[0.15, 0.2, 0.4, 0.6, 0.8] \times 2.76 \times 10^{23} \text{ cm}^{-2}$. (c). Column density probability distribution function (N-PDF). The blue vertical dashed line marks the mean column density of $\sim 3.3 \times 10^{22} \text{ cm}^{-2}$. The red vertical dashed line shows the starting column density ($\sim 4 \times 10^{22} \text{ cm}^{-2}$) of the power law fit. (d). Two-point correlation functions of the column density distribution.

Figure 9a. Particularly, the dense filament is close to the cloud edge, indicating possible dynamical clues to its formation (e.g., external compression).

Figure 9b presents the dust temperature and column density maps obtained from SED fits with Herschel/PACS 160 μm , SPIRE 250/350 μm and combined Planck+SCUBA-2 850 μm data in **R2** reduction. The final dust temperature and column density maps have an angular resolution of $25''$. The temperature map clearly reveals a temperature gradient from south-east to north-west.

To quantify the dense gas distributions systematically, we perform analyses of the column density probability distribution functions (N-PDF) following Lin et al. (2016, 2017). The natural logarithm of the ratio of column density and mean column den-

sity is $\eta = \ln(N_{\text{H}_2}/\langle N_{\text{H}_2} \rangle)$, and the normalization of the probability function is given by $\int_{-\infty}^{+\infty} p(\eta) d\eta = \int_0^{+\infty} p(N_{\text{H}_2}) d(N_{\text{H}_2}) = 1$. Figure 9c shows the column density probability distribution functions (N-PDF). The N-PDF in molecular clouds is usually found to consist of a lognormal like part at low column density and a power-law like part at high column density (Klessen 2000; Kritsuk et al. 2011; Federrath & Klessen 2013; Schneider et al. 2012, 2015; Lin et al. 2016, 2017). The N-PDF power-law tail is usually linked to the effects of gravity (Klessen 2000; Kritsuk et al. 2011; Federrath & Klessen 2013; Lin et al. 2016, 2017). We tried to fit the tail with a power law for the N-PDF of G26. Although the power-law fit is poor, its slope (-3.9) is comparable to those of IRDCs G28.34+0.06 (-3.9) and G14.225-0.506 (-4.1) but smaller than those of protoclusters (Lin et al.

2016, 2017), indicating that G26 is still at a very young evolutionary stage and is not greatly affected by star formation activities as in high-mass protoclusters.

To diagnose the characteristic spatial scales in G26, we determine the two-point correlation functions (2PT) of gas column density following Lin et al. (2016, 2017). Figure 9d shows the two-point correlation (2PT) function of column densities in the observed field. The correlation strength at a separation scale (lag) of l is calculated by

$$S_{tr}(l) = \frac{\langle X(\mathbf{r})X(\mathbf{r}+\mathbf{l}) \rangle_l}{\langle X(\mathbf{r})X(\mathbf{r}) \rangle_l}, \quad (1)$$

where $X(\mathbf{r})$ denotes the column density value at position \mathbf{r} , and the angle brackets are an average over all pairs of positions with a separation of l . The final form of the correlation function is normalized by the peak correlation strength to enable comparisons between different fields. For a more detailed description, see (Lin et al. 2016, 2017).

In general, the 2PT function shows a smooth decay of correlation strengths over all spatial scales up to ~ 15 pc. Such a flat profile in 2PT correlation is also witnessed towards IRDCs like G11.11-0.12 (see Figure 5 in Lin et al. 2017), but is in contrast with most of the active OB-cluster-forming regions, which have a steep decay of correlation strength at small spatial scales (Lin et al. 2016). The flat 2PT correlation indicates that the column density distribution of G26 is very homogeneous over all spatial scales larger than 1 pc and the mass is less concentrated overall than in high-mass protoclusters.

The N-PDF and 2PT are powerful tools to investigate the cloud structure evolution and should be applied to other SCOPE fields.

4.5. Dense gas fraction

The empirical power-law relations between the star formation rate (SFR), surface density (Σ_{SFR}) and the surface density of cold gas (Σ_{gas}), pioneered in the works of Schmidt (1959) and Kennicutt et al. (1998), the so-called Kennicutt–Schmidt (K-S) law, is of great importance as an input for theoretical models of galaxy evolution. Recently, nearly linear correlations between star formation rates and line luminosities of dense molecular gas tracers (e.g., HCN and CS) have been found toward both Galactic dense clumps and galaxies (Gao & Solomon 2004; Wu et al. 2005, 2010; Lada, Lombardi, & Alves 2010; Zhang et al. 2014; Liu et al. 2016c; Stephens et al. 2016), strongly suggesting that star formation is mainly related to dense gas in molecular clouds. Therefore, it is important to evaluate the proportions of dense gas in molecular clouds. As

discussed in Liu et al. (2016c), the relation between star formation rates and clump masses (traced by filtered continuum maps) is as tight as correlations between star formation rates and line luminosities of dense gas tracers (e.g., HCN, CS). Particularly, filtered continuum maps have advantages to trace the total dense gas masses than dense gas tracers (e.g., HCN, HCO^+ , CS), whose emissions are usually optically thick (Liu et al. 2016c). Since the filtered SCUBA-2 images intrinsically filter the large-scale diffuse gas and are most sensitive to the high volume densities ($\sim 10^4 \text{ cm}^{-3}$ for G26) in clouds, the flux ratio between the SCUBA-2 data and the Planck+SCUBA-2 combined data is well representative of the dense gas fraction in the cold dust (f_{DG}), as also suggested in Csengeri et al. (2016).

Figure 10 a,c show the dense gas fraction maps for G26. In general, the dense gas fraction increases with column density. In panels (b) and (d), we investigate the relationship between the dense gas fraction and flux density for the pixels with $\text{SNR} > 5$ in the SCUBA-2 images. The correlations can be well fitted with logarithmic functions toward high flux density points. The logarithmic function fits can also extend to low flux density points even though the low flux density points show much larger scatter. The f_{DG} in image from **R2** reduction range from 0.13 to 0.73 with a median value of 0.30. While the f_{DG} in the image from **R4** reduction range from 0.17 to 0.75 with a median value of 0.37. The dense gas fractions determined from images with different spatial filters are slightly different but only vary less than $\sim 10\%$. It seems that only 30%-40% of the cloud gas in G26 is dense.

4.6. On the origin of the dense filament

4.6.1. Evidence for large scale compression flows

The origin of dense filaments in giant clouds still remains a puzzle to astronomers (André et al. 2014). Filaments have been well predicted in simulations of supersonic turbulence in the absence of gravity, which can produce hierarchical structure with a lognormal density distribution seen in observations (Vázquez-Semadeni 1994). Filaments in strongly magnetized turbulent clouds (e.g. B211/3, Musca; Palmeirim et al. 2013; Cox et al. 2010) are oriented preferentially perpendicular to the magnetic field lines, suggesting an important role of magnetic fields in filament formation. Filamentary structures in the Galaxy are preferentially aligned parallel to the Galactic mid-plane and therefore with the direction of large-scale Galactic magnetic field, suggesting a possible connection between large-scale Galactic dynamics and filament formation (Wang et al. 2015, 2016; Li et al. 2016). The formation of filaments

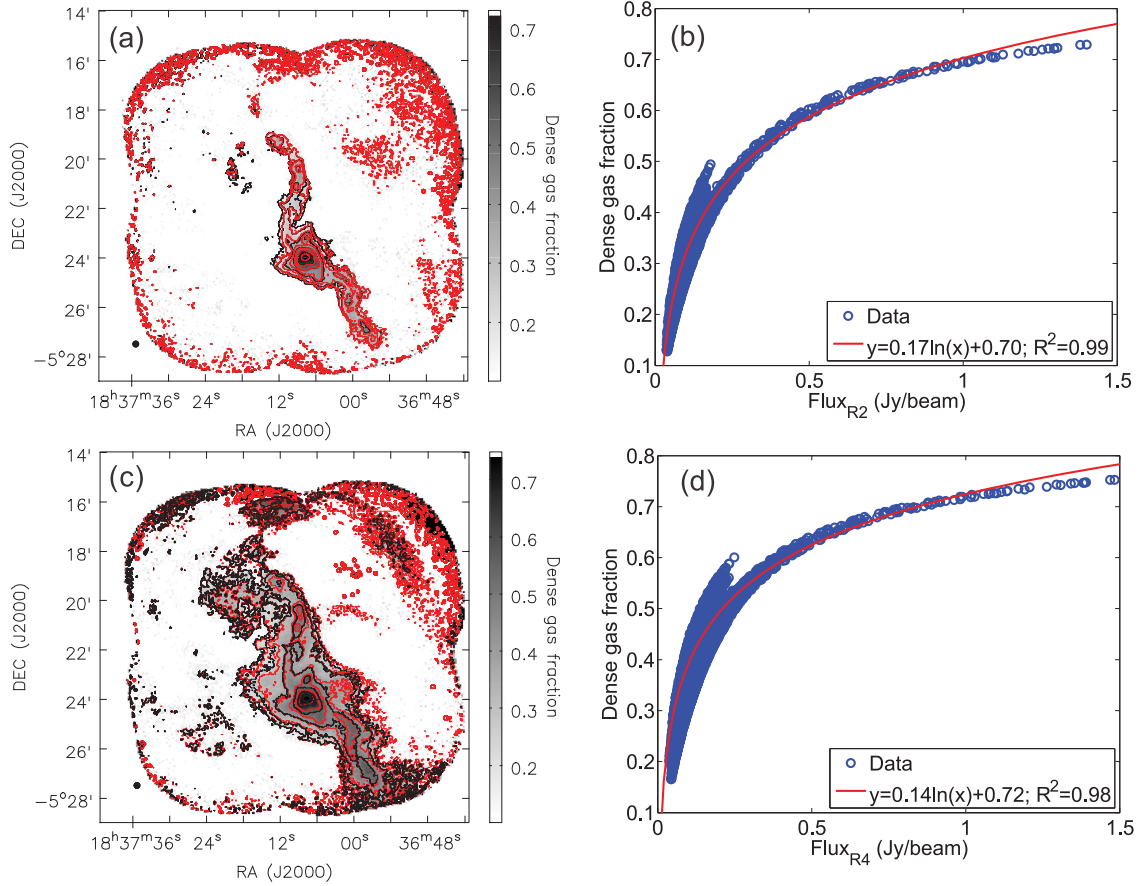


Figure 10. (a). The dense gas fraction in $R2$ reduction is shown in gray-scale and red contours. The contour levels are [0.2, 0.3, 0.4, 0.5, 0.6, 0.7]. The 850 μm continuum emission in $R2$ reduction is shown in black contours. The contour levels are the same as in the lower panel of Figure A2. (b). The dense gas fraction vs. the 850 μm continuum flux density in the $R2$ reduction. The red line shows the logarithmic function fit toward the pixels with flux density larger than 200 mJy beam^{-1} in the SCUBA-2 image. (c). The dense gas fraction in $R4$ reduction is shown in gray-scale and red contours. The contour levels are [0.2, 0.3, 0.4, 0.5, 0.6, 0.7]. The 850 μm continuum emission in $R4$ reduction is shown in black contours. The contour levels are the same as in Figure A3b. (d). The dense gas fraction vs. the 850 μm continuum flux density in the $R4$ reduction. The red line shows the logarithmic function fit toward the pixels with flux density larger than 300 mJy beam^{-1} in the SCUBA-2 image.

by self-gravitational fragmentation of sheet-like clouds has been seen in simulations of 1D compression (e.g., by an expanding HII region, an old supernova remnant, or the collision of two clouds; Inutsuka et al. 2015; Federrath 2016; Li, Klein & McKee 2017). For example, the asymmetric column density profiles of filaments in the Pipe Nebula are most likely the result of large-scale compressive flows generated by the winds of the nearby Sco OB2 association (Peretto et al. 2012).

The “SCOPE” survey aims to resolve Planck cold clumps and reveal their substructures. We will assess the detection rate of filaments in Planck cold clumps in different environments (e.g., spiral arms, interarms, high latitude, expanding HII regions, supernova remnants). In conjunction with molecular line data from the “TOP” and “SAMPLING” surveys, which provide kinematic

information, we will be able to study the formation mechanisms of dense filaments in widely different environments. Below we present evidence of compression flows that may be responsible to the formation of the G26 filament.

As shown in the upper panel of Figure A1 and Figure 9b, the temperature gradient on large scales is perpendicular to the dense filament G26. Figure 11 a-b present maps of the first moment of ^{12}CO (1-0) and ^{13}CO (1-0), respectively. The maps reveal large-scale velocity gradients along the NW-SE direction across the whole map. Temperature gradient suggests an asymmetric heating source. Together with the velocity gradient, one can image compression flows from the left.

The origin of the large-scale compression flows is unclear. To the east of G26, we found an infrared

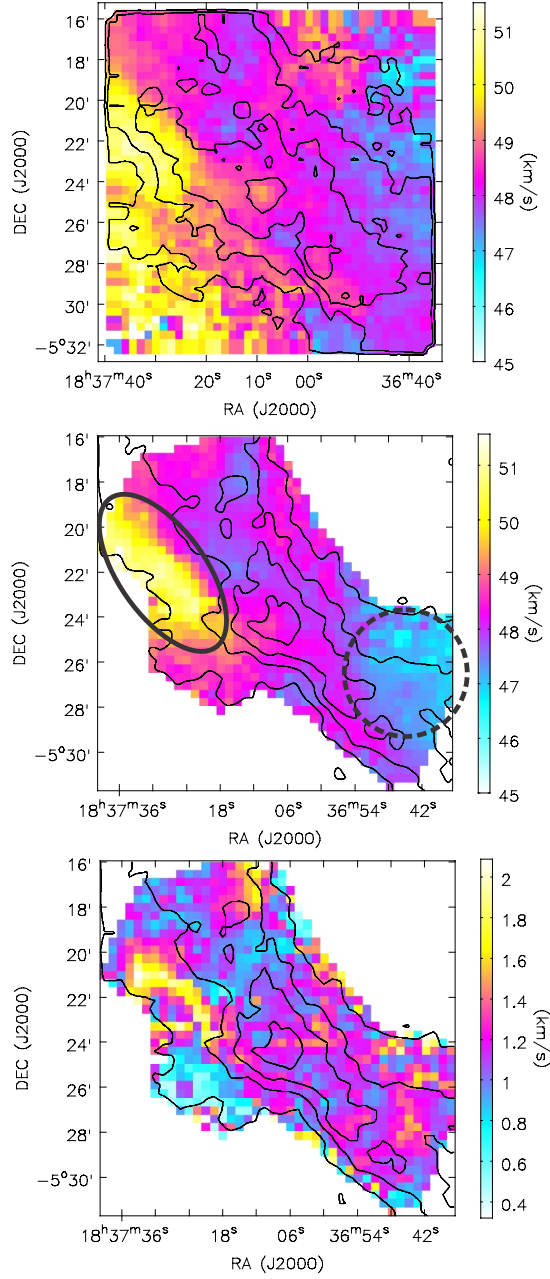


Figure 11. Upper panel: ^{12}CO (1-0) integrated intensity contours overlaid on its first-moment map. Middle panel: ^{13}CO (1-0) integrated intensity contours overlaid on its first-moment map. The dashed circle and solid ellipse mark the regions that show large velocity gradients. Lower panel: ^{13}CO (1-0) integrated intensity contours overlaid on its second-moment map. The contours for both ^{12}CO (1-0) and ^{13}CO (1-0) are from 20% to 80% in steps of 20% of the peak values. The peak integrated intensities of ^{12}CO (1-0) and ^{13}CO (1-0) are 56 K km s^{-1} and 20 K km s^{-1} , respectively.

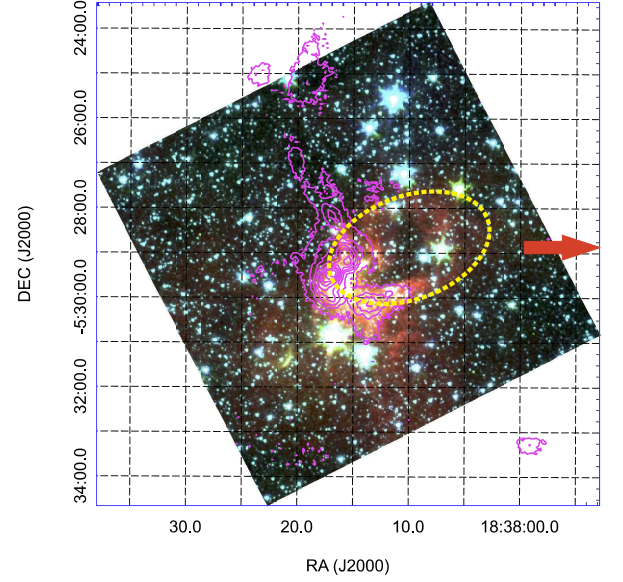


Figure 12. Spitzer/IRAC three-color ($3.6 \mu\text{m}$ in blue, $4.5 \mu\text{m}$ in green, and $8 \mu\text{m}$ in red) composite image of the G26 bubble region. The magenta contours represent the SCUBA-2 $850 \mu\text{m}$ continuum emission. The contour levels are $[0.1, 0.2, 0.3, 0.4, 0.5, 0.6, 0.7, 0.8, 0.9] \times 958.6 \text{ mJy beam}^{-1}$. The yellow dashed ellipse outlines the infrared bubble. The red arrow marks the direction of G26.

bubble. Figure 12 shows a three-color composite Spitzer/IRAC image of the infrared bubble overlaid with SCUBA-2 $850 \mu\text{m}$ continuum emission in contours. As shown in Figure 13, the locations between the bubble and the filament have higher column density (~ 1.6 times higher) and higher temperature ($\sim 3 \text{ K}$ higher) than the locations west of the filament, suggesting a pressure gradient exists from the south-east to north-west. Also, the filament shows an asymmetric column density profile (panel a & b), again indicating that it may be compressed by external pressure from its south-east side. Panel (e) and (f) present the variance of the integrated intensity and intensity weighted velocity of ^{12}CO (1-0) and ^{13}CO (1-0) line emission, respectively. Both ^{12}CO (1-0) and ^{13}CO (1-0) line emission reveal a large-scale velocity gradient ($\sim 0.16 \text{ km s}^{-1} \text{ pc}^{-1}$) perpendicular to the filament, again suggesting the existence of compression flows.

Note that the infrared bubble only has an extent of $\sim 5 \text{ pc}$ and is $\sim 15 \text{ pc}$ away in projection from the filament G26 (see Figures A1a and A4a in Appendix A). Hence the bubble may not have ability to generate the large-scale compression flows. Since the G26 filament is parallel to the Galactic Plane (see Figure 4), the large-scale compression flow may originate from the ram

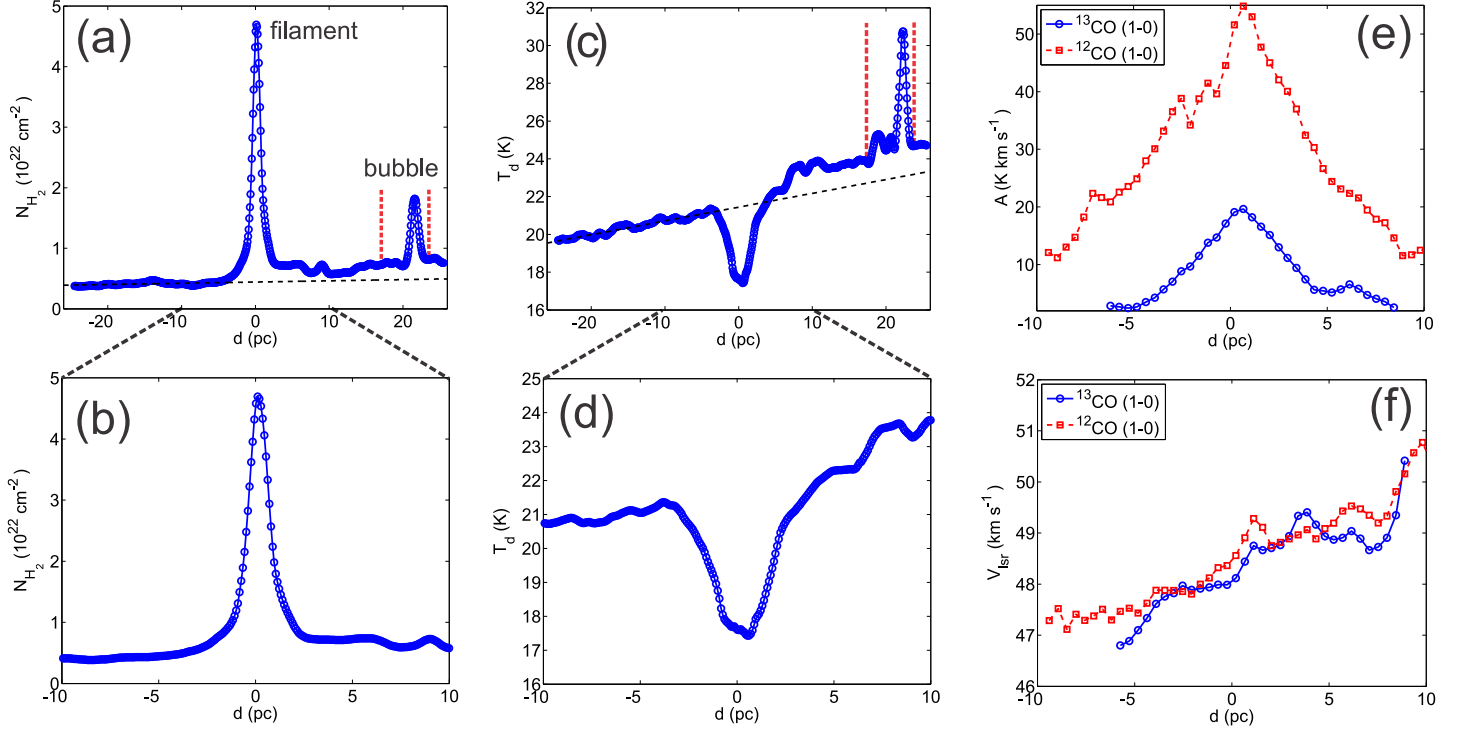


Figure 13. The variation of column density (a, b), dust temperature (c,d), integrated intensity (e) and intensity weighted velocity (f) of ^{12}CO (1-0) and ^{13}CO (1-0), along the yellow dashed line across the filament seen in the upper panel of Figure A1. The distances are calculated with respect to the peak of the filament. The black dashed lines in (a) and (c) are linear fits toward the positions (-25 pc to 5 pc) behind the filament. The red dashed lines in (a) and (c) mark the bubble region.

pressure from the OB associations in the Galactic Plane. In any case, the higher pressure to the south-east of G26 can continuously sweep up the interstellar gas to feed the dense filament.

4.6.2. Collisions of sub-filaments?

Figure 14 presents channel maps of the J=1-0 transitions of ^{12}CO , ^{13}CO and C^{18}O lines. In contrast to the 850 μm continuum emission, the molecular line emission reveals more complicated structures. Several velocity coherent subfilaments (F1 to F6) can be identified from the channel maps. The position angles of F1, F2, F3, F4, F5, and F6 are about 45° , 115° , 0° , 44° , 80° and 20° , respectively. The sub-filaments F3, F4, and F6 are also seen in SMT ^{13}CO (2-1) channel maps (see Figure 15). Those sub-filaments have noticeable differences in velocity because they emerge in different velocity channels.

F4 and F6 form the main gas sub-filament, most of whose emission is in the 47-48 km s^{-1} channels. F1, which has the most redshifted velocities among the sub-filaments, is located to the north-west and only appears in the 51-53 km s^{-1} channels. F1 seems to interact with the main filament (F6) as well as another sub-filament (F2). The interface between F1 and F6 shows much larger velocity dispersion, as revealed in the second

moment map of ^{13}CO (1-0) emission (see the lower panel of Figure 14). F5 has more blueshifted velocities than other sub-filaments. It is connected to F4. The G26 filament as revealed by SCUBA-2 850 μm continuum has a curved (or “S” type) shape, suggesting that it may be dynamically interacting with its surroundings (Wang et al. 2015, 2016). The continuum filament is mainly associated with the F3 and F4 gas sub-filaments. Interestingly, F3 is clearly offset from the axis of the main gas filament (F6) and has redshifted velocities with respect to F6. F3 may be compressed due to a collision between F1 and F6. The collision may have reshaped the continuum filament into a curved shape. F5 may also collide with F4 and reshape the southern arm of the continuum filament. With the detection of several sub-filaments in G26 and because IRDCs are at the very early stages of star formation, we add further support to the idea that IRDCs are in a stage in which they are still being assembled (Jiménez-Serra et al. 2010; Sanhueza et al. 2013).

4.6.3. Filament accretion

Figure 16 presents PV diagrams of ^{13}CO (2-1) line emission along sub-filaments F3, F4, and F6. The peak emission of the clump 6 is significantly blueshifted with respect to the systemic velocity and the main sub-

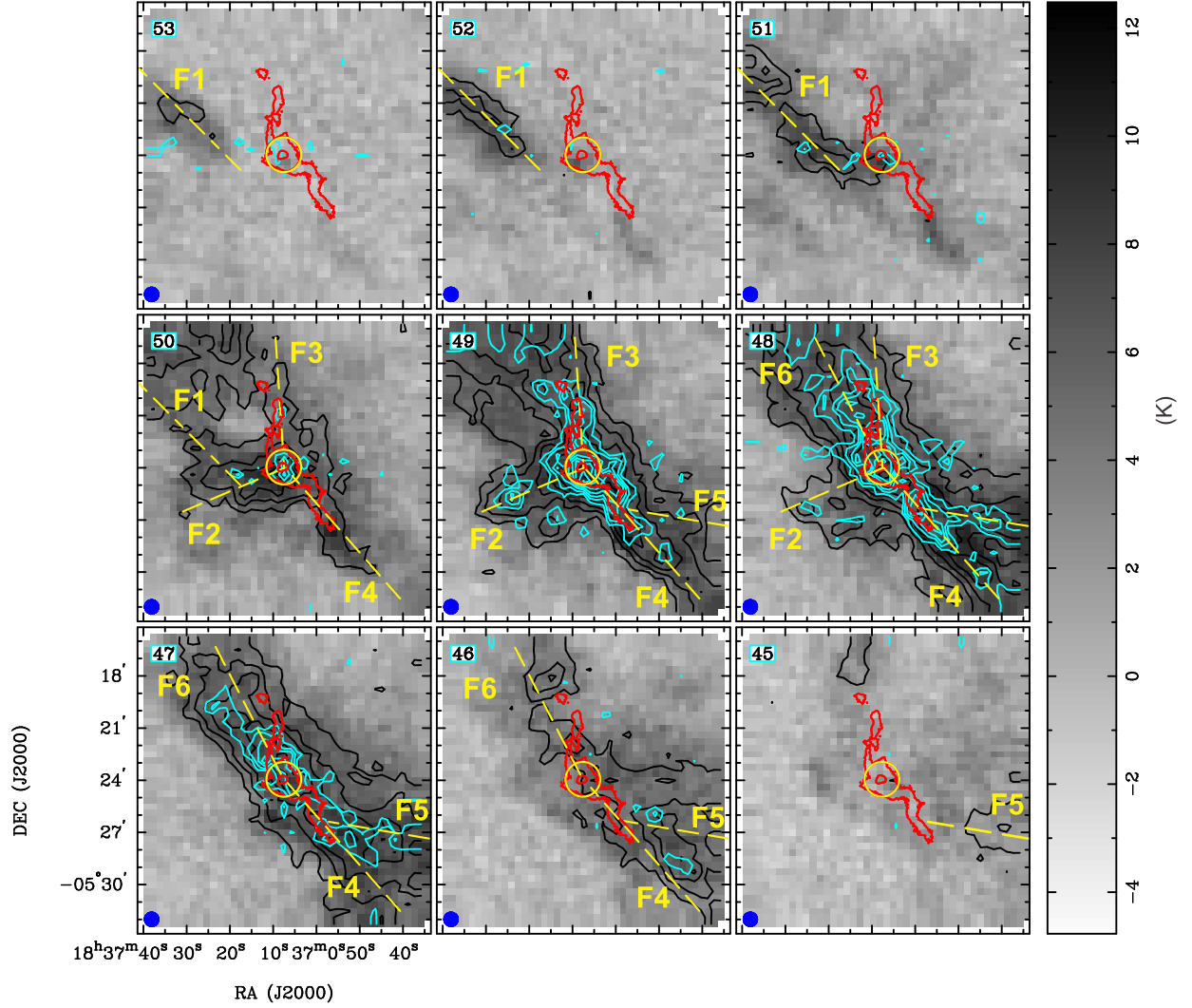


Figure 14. Channel maps of J=1-0 transitions of ^{12}CO (gray scale images), ^{13}CO (black contours), and C^{18}O (blue contours). The contour levels for ^{13}CO are from 10% to 90% in steps of 10% of the peak intensity (8.2 K). The contour levels for ^{13}CO are from 10% to 90% in steps of 10% of the peak intensity (3.0 K). The yellow circles mark the central massive clump. The yellow lines outline the sub-filaments. The red contours show the SCUBA-2 850 μm continuum emission in the **R2** data reduction. The contour levels are $[0.05, 0.5] \times 1.40 \text{ Jy beam}^{-1}$.

filament. As denoted by yellow dashed lines, the sub-filaments connected to the central clump show a clear velocity gradients with respect to the peak emission of the central clump. The velocity gradients are $\sim 0.4 \text{ km s}^{-1} \text{ pc}^{-1}$, $\sim 0.6 \text{ km s}^{-1} \text{ pc}^{-1}$, and $0.5 \text{ km s}^{-1} \text{ pc}^{-1}$ for “F3”, “F4” and “F6”, respectively, which are similar to the values found in other Galactic long filaments (Wang et al. 2016).

One interpretation of velocity gradients is that they are caused by inflows along the sub-filaments as also seen in other filamentary clouds (Kirk et al. 2013; Peretto et al. 2013; Liu et al. 2016b; Yuan et al. 2017). The velocity differences (δV) between the sub-filaments and central clump become larger as they approach the central clump (i.e., $\delta V \propto \delta R^{-1}$, where δR is the distance

to the central clump), suggesting that the inflows along the sub-filaments are likely driven by the gravity of the central clump MM6.

We can estimate the mass inflow rate (\dot{M}_{\parallel}) along filaments following Kirk et al. (2013):

$$\dot{M}_{\parallel} = \frac{\nabla V_{\parallel, \text{obs}} M}{\tan(\alpha)} \quad (2)$$

where $\nabla V_{\parallel, \text{obs}}$, M and α are the velocity gradient, mass and inclination angle with respect to the plane of the sky of a filament, respectively. Since most gas is bounded in dense clumps, only a small fraction of free gas may be accreted along the filament. We estimated the mass of the free gas as the difference ($\sim 1900 \text{ M}_{\odot}$) between the total filament mass ($\sim 6200 \text{ M}_{\odot}$) and the

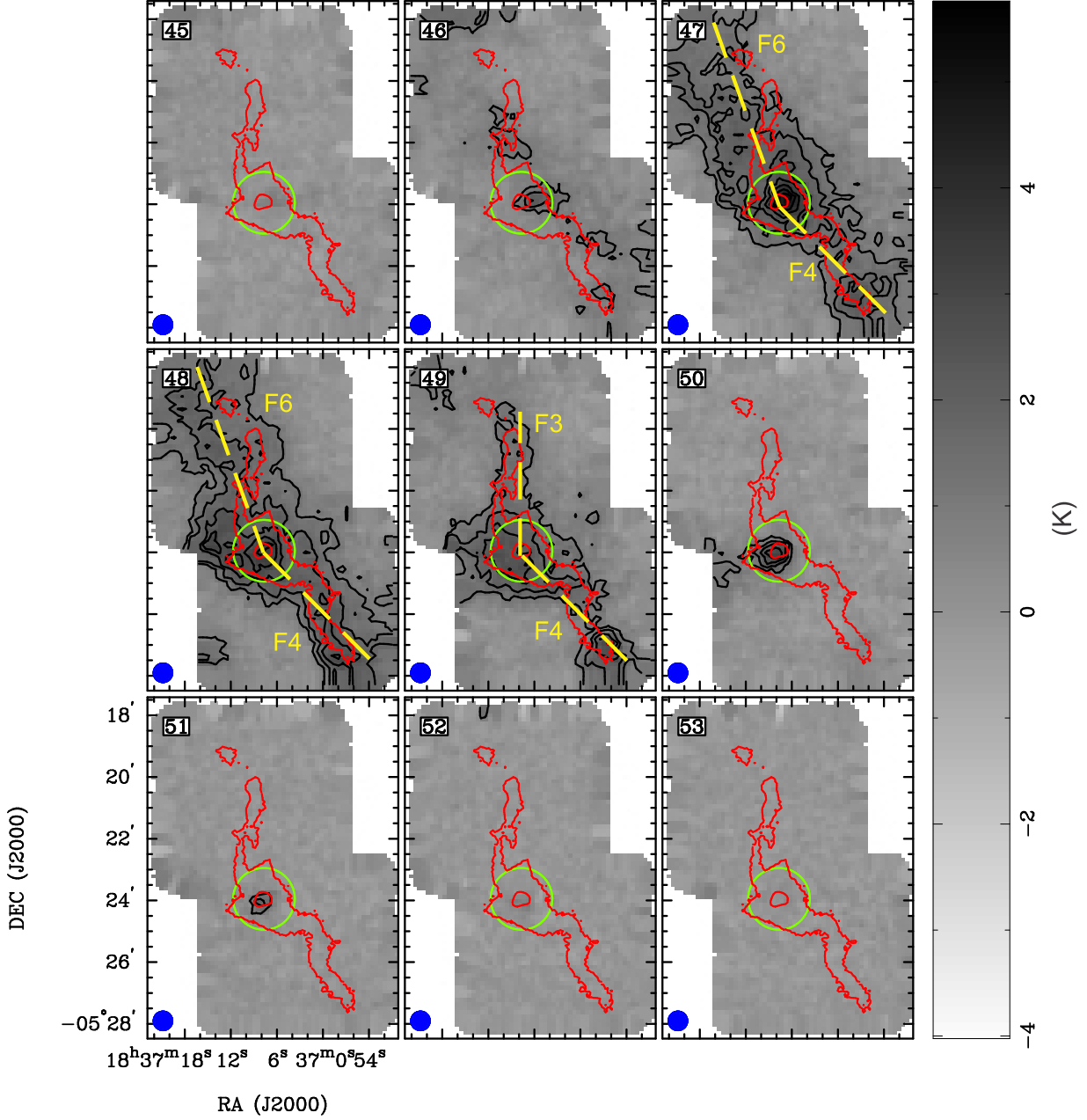


Figure 15. Channel maps of ^{13}CO (2-1) line emission. The contour levels for ^{13}CO are from 20% to 90% in steps of 10% of the peak intensity (5.8 K). The yellow dashed lines outline the directions of Position-Velocity cuts in Figure 16. The green circles mark the central massive clump. The red contours show the SCUBA-2 850 μm continuum emission in the **R2** data reduction. The contour levels are $[0.05, 0.5] \times 1.40 \text{ Jy beam}^{-1}$.

sum of the clump masses ($\sim 4300 \text{ M}_{\odot}$) from the **R4** imaging scheme. We take a mean velocity gradient of $\sim \nabla V_{\parallel, \text{obs}} = 0.5 \text{ km s}^{-1} \text{ pc}^{-1}$ to estimate the net mass inflow rate. Assuming $\alpha = 45^\circ$, the inflow rate along the filaments to the central clump is $\sim 1 \times 10^{-3} \text{ M}_{\odot} \text{ yr}^{-1}$.

4.7. Chemical properties of filaments and dense clumps

The CO molecular line data from the “TOP” and “SAMPLING” surveys will be used to study the gaseous CO properties (e.g., abundances, CO-to- H_2 conversion

factors, CO depletion) of a large sample of PGCCs through joint analysis with the continuum emission data. The KVN survey is designed to observe dozens of dense gas lines toward dense clumps and cores detected in the “SCOPE” survey and characterize their chemical properties. Below, we will investigate the CO depletion of the G26 filament and the dense gas abundances in clump 6.

4.7.1. CO depletion

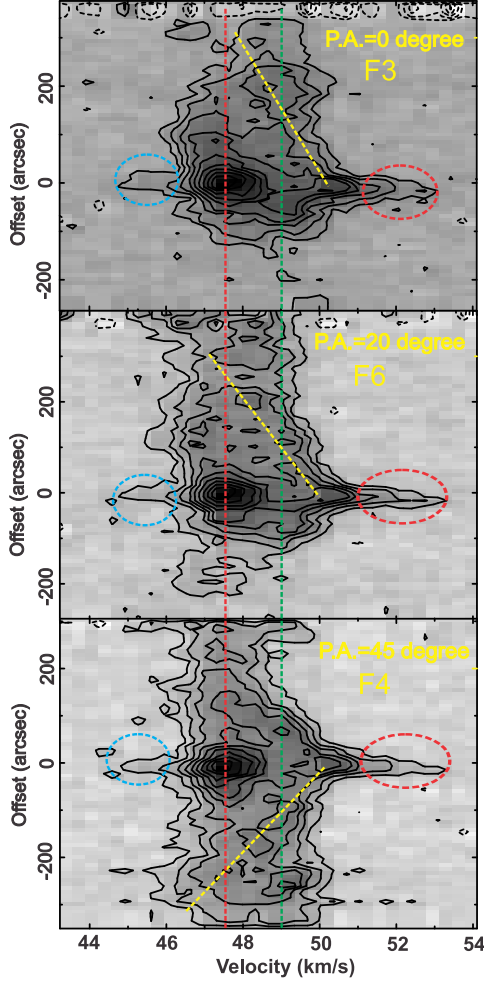


Figure 16. Position-Velocity diagrams of ^{13}CO (2-1) line emission. The contour levels are from 10% to 90% in steps of 10% of the peak value (5.3 K). The green dashed vertical line marks the systemic velocity of 49 km s^{-1} . The blueshifted and redshifted high-velocity emission is marked with blue and red dashed ellipses, respectively. The red vertical dashed line depicts the peak emission. The yellow dashed lines show the velocity gradients along the filaments.

Gaseous CO significantly freezes out onto grain surfaces when densities exceed $\sim 3 \times 10^4 \text{ cm}^{-3}$ (Bacmann et al. 2002). As CO is a major destroyer of molecular ions, CO depletion leads to a change in the relative abundances of major charge carriers (e.g., H_3^+ , N_2H^+ and HCO^+ ; Bergin & Tafalla 2007; Caselli 2011). In addition, the abundance of the nitrogen hydrides and deuterated molecules are strongly enhanced and these species are probing the gas where CO (and other carbon-bearing species) is depleted (Bergin & Tafalla 2007; Caselli 2011). Therefore, studies of CO depletion are very important for understanding the chemical processes in star formation. Through statistical studies of a sample of 674 PGCCs, Liu et

al. (2013) found that the CO abundance is strongly (anti-)correlated to other physical parameters (e.g., dust temperature, dust emissivity spectral index, column density, volume density, and luminosity-to-mass ratio), suggesting that the gaseous CO abundance can be used as an evolutionary tracer for molecular clouds. Similarly, Giannetti et al. (2014) also found that less evolved ATLASGAL-selected high-mass clumps seem to show larger values for the CO depletion than their more evolved counterparts, and CO depletion increases for denser sources. However, both studies in Liu et al. (2013); Giannetti et al. (2014) used single-pointing molecular CO data, which limited the accurate determination of CO depletion in molecular clouds. The molecular CO mapping survey data in the TOP survey are more suitable for investigating how CO abundances or CO depletion varies inside individual molecular clouds and changes in different kinds of molecular clouds.

The upper panel of Figure 17 presents the spectra of ^{13}CO (1-0), ^{13}CO (2-1) and C^{18}O (1-0) at the continuum peak for G26. The ^{13}CO (2-1) and C^{18}O (1-0) emission have a spatial distribution similar to that of the SCUBA-2 $850 \mu\text{m}$ continuum as shown in the lower panel of Figure 17.

C^{18}O (1-0) emission is optically thin in G26 (see Table 2). We derived C^{18}O column densities following Liu et al. (2013) by assuming that the excitation temperature of C^{18}O (1-0) equals to the dust temperature. The C^{18}O abundance ($X_{\text{C}^{18}\text{O}}$) was derived by comparing the C^{18}O column densities with the H_2 column density map from the SED fits with Herschel data and Planck+SCUBA-2 data. The C^{18}O column density map and H_2 column density map were smoothed to the same resolution of $\sim 52''$. The CO gas depletion factor (f_D) is defined as $f_D = \frac{\max(X_{\text{C}^{18}\text{O}})}{X_{\text{C}^{18}\text{O}}}$, where $\max(X_{\text{C}^{18}\text{O}})$ is the maximum C^{18}O abundance ($\sim 1.5 \times 10^{-7}$) across the map with C^{18}O emission larger than 3σ . The CO gas depletion factor map is presented in Figure 18. The highest depletion ($f_D \sim 5$) occurs at the central massive clump (“6”) due to its largest column density and relatively low temperature. However, since MM6 hosts a relatively strong IR source (bright at $24 \mu\text{m}$ and $70 \mu\text{m}$), the higher CO depletion means that the star formation process inside MM6 is really new and most of the clump gas is still cold. Due to the large beam of TRAO observations, we see most of the bulk, cold gas rather than the small, localized hot region, further suggesting that the IRDC G26 is still very young.

The CO gas in the surroundings of the central clump MM6 is less depleted ($f_D \sim 1.5\text{--}2.5$). The outskirts of the filament also shows higher apparent CO depletion,

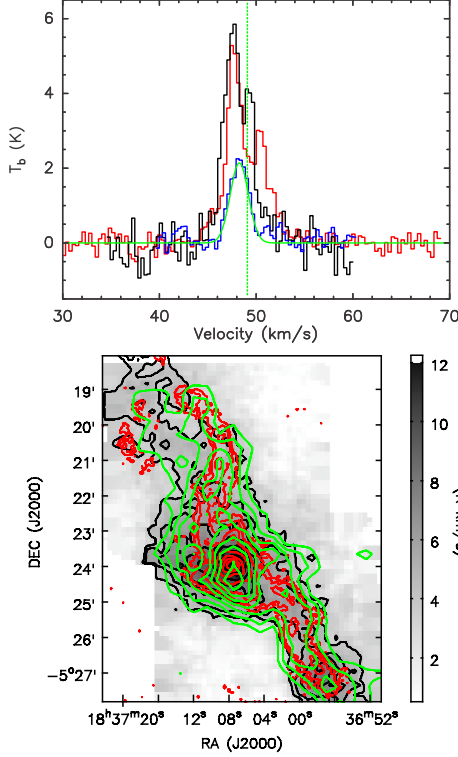


Figure 17. Upper panel: The spectra of ^{13}CO (1-0) and ^{13}CO (2-1) at the continuum peak are shown in black and red, respectively. The spectrum of C^{18}O (1-0) averaged over an region of $1' \times 1'$ is shown in blue. The Gaussian fit of C^{18}O (1-0) is shown in green. The green dashed vertical line marks the systemic velocity of 49 km s^{-1} . Lower panel: Integrated intensity ($47\text{--}50 \text{ km s}^{-1}$) map of ^{13}CO (2-1) is shown in gray scale and black contours. The contour levels are from 30% to 90% in steps of 10% of the peak value (12.9 K km s^{-1}). Integrated intensity ($47\text{--}50 \text{ km s}^{-1}$) map of C^{18}O (1-0) is shown in green contours. The contour levels are from 30% to 90% in steps of 10% of the peak value (6.4 K km s^{-1}). The SCUBA-2 $850 \mu\text{m}$ continuum emission in the **R2** data reduction is shown in red contours. The contour levels are $[0.03, 0.05, 0.1, 0.2, 0.4, 0.6, 0.8] \times 1.40 \text{ Jy beam}^{-1}$.

which reflects the lower CO abundance therein. The low CO abundance in the outskirts suggests that CO gas is released from dust grains due to external heating from interstellar radiation and then photodissociated.

4.7.2. Molecular lines from KVN 21-m single pointing observations

We observed the massive clump “6” in molecular lines that trace dense gas with the KVN 21-m single dishes to characterize its chemical properties. Figure 19 presents the spectra from KVN 21-m single pointing observations. HCO^+ $J=1\text{--}0$ and H_2CO $2_{1,2} - 1_{1,1}$ lines show “red asymmetry profiles” morphology with line wings, indicating that their emission is affected by outflows. H^{13}CO^+ $J=1\text{--}0$ and N_2H^+ $J=1\text{--}0$ spectra show

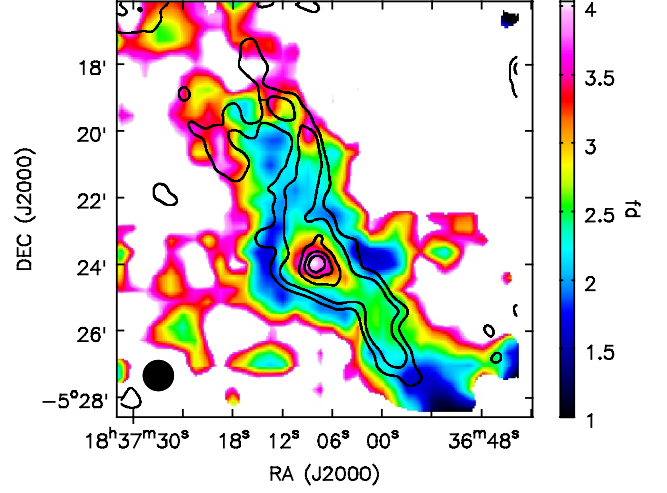


Figure 18. The CO gas depletion factor is shown as color image. The column density map from SED fits with Herschel and combined Planck and SCUBA-2 $850 \mu\text{m}$ data in **R2** is shown in contours. The contour levels are $[0.15, 0.2, 0.4, 0.6, 0.8] \times 2.76 \times 10^{23} \text{ cm}^{-2}$.

two velocity components. Since the H^{13}CO^+ $J=1\text{--}0$ and the isolated hyperfine components of N_2H^+ $J=1\text{--}0$ lines are usually optically thin in IRDCs (Sanhueza et al. 2012), their two velocity components should not be the result of self-absorption. Indeed, the two velocity components may indicate the existence of converging flows inside the clump as resolved in other high-mass clumps (e.g., SDC335, G10.6-0.4, G33.92+0.11, AFGL 5142; Peretto et al. 2013; Liu et al. 2013b, 2015, 2016b) or interacting sub-filaments (e.g., G028.23-00.19; Sanhueza et al. 2013).

We did not detect the 22 GHz water maser but detected the 44 GHz methanol maser. The 44 GHz methanol maser has two velocity components peaked at $\sim 47.9 \text{ km s}^{-1}$ and $\sim 48.7 \text{ km s}^{-1}$, respectively. The 44 GHz methanol maser is blueshifted with respect to the systemic velocity ($\sim 49 \text{ km s}^{-1}$) and has much smaller line widths than other lines that trace denser gas.

SiO emission shows broad lines and two velocity components. The blueshifted component in SiO emission has much broader line widths than the central component, which may be caused by outflow shocks. CCH $N=1\text{--}0$ and N_2H^+ (1-0) each have hyperfine structures. Their hyperfine lines were fitted assuming LTE to obtain their line widths and optical depths. HCN (1-0) shows very complicated line profile, which is likely caused by its hyperfine structures and self-absorption. We did not fit the HCN (1-0) spectrum. The other lines were fitted with a Gaussian function. The line parameters are summarized in Table 2. The systemic velocity (~ 49

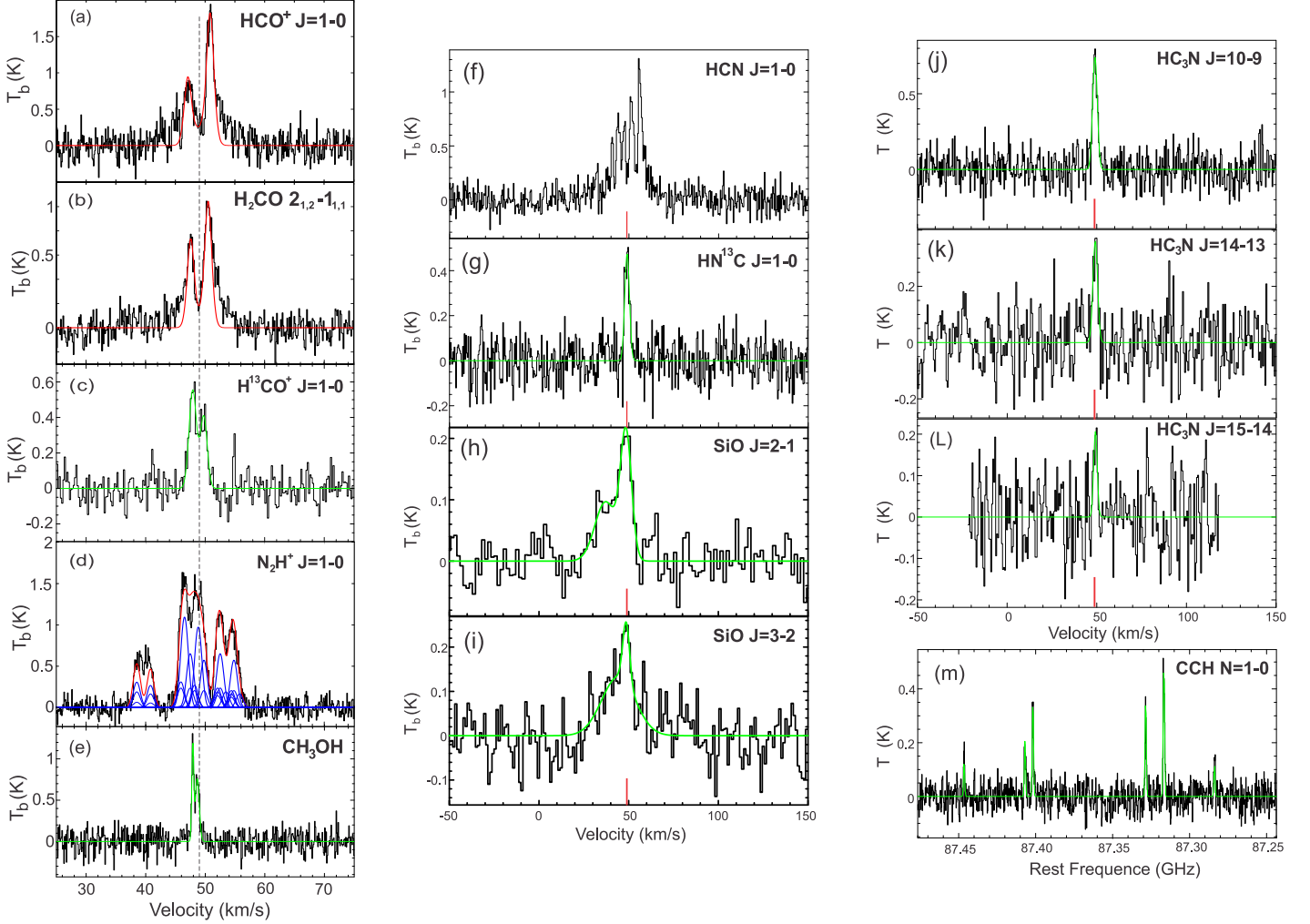


Figure 19. The spectra of the central clump from KVN 21-m single-dish observations. The observed spectra are shown in black. The red lines in panels (a) and (b) show the two layer model fits. The blue lines in panel (d) show the hyperfine structure fit toward the N_2H^+ (1-0) line spectrum. The red line is the sum of the hyperfine structures. The green line in panel (m) shows the hyperfine structure fit toward the CCH ($N=1-0$) line. The green lines in other panels (a to L) show the Gaussian fits of the spectra. The line transition name is labeled in the upper-right corner in each panel. The black dashed vertical lines in panels (a to e) and the red vertical lines in panels (f to L) mark the systemic velocity of 49 km s^{-1} .

km s^{-1}) is obtained from averaging the peak velocities of the optically thin lines (C^{18}O , HC_3N and HN^{13}C). The $\text{HDCO } 2_{0,2} - 1_{0,1}$ line was not detected at an rms level of 0.06 K.

We estimated the column densities from molecular lines with the RADEX⁷ radiation transfer code by fixing the kinetic temperature to 17 K, i.e., the dust temperature. For C^{18}O , C_2H , and N_2H^+ , the H_2 volume density of clump 6 is set to $6 \times 10^3 \text{ cm}^{-3}$ from the **R4** imaging scheme. For the other lines (H^{13}CO^+ , HN^{13}C and HC_3N), the H_2 volume density of clump 6 is set

as $1.8 \times 10^4 \text{ cm}^{-3}$ from the **R2** imaging scheme since their effective excitation densities are about one order of magnitude higher than that of N_2H^+ (Shirley 2015).

As shown in Figure 20, with three transitions, the source size (θ_S) of the HC_3N emitting area can be well determined, i.e., $11''$. We applied the same filling factor ($f = \frac{\theta_S^2}{\theta_S^2 + \theta_{beam}^2}$) for the H^{13}CO^+ and HN^{13}C calculations. We assume a filling factor of 1 in the RADEX calculations for the other lines. The RADEX-derived excitation temperature, optical depth, column density, and abundance from each transition are listed in the last four columns of Table 2.

As a major destroyer of N_2H^+ , the absence of CO in the gas phase could enhance the abundance of N_2H^+ . In warm regions, however, CO evaporation could destroy

⁷ RADEX is a one-dimensional non-LTE radiative transfer code, that uses the escape probability formulation assuming an isothermal and homogeneous medium without large-scale velocity fields (Van der Tak et al. 2007).

Table 2. Derived parameters of molecular lines

| Line | $\int T_b dv^a$ (K km s ⁻¹) | V_{LSR}^a (km s ⁻¹) | FWHM ^a (km s ⁻¹) | T_{mb} (K) | T_{ex}^b (K) | τ^b | N^b (cm ⁻²) | X^c |
|---|--|--------------------------------------|--|-----------------|-------------------|----------|------------------------------|---------|
| C ¹⁸ O J=1-0 | 5.05(0.25) | 48.23(0.05) | 2.22(0.12) | 2.14 | 18.2 | 0.1 | 4.6E15 | 1.0E-07 |
| CH ₃ OH 7 ₀ – 6 _{1A} + | 0.48(0.06) | 47.90(0.02) | 0.39(0.04) | 1.16 | | | | |
| | 0.64(0.07) | 48.66(0.04) | 0.79(0.11) | 0.76 | | | | |
| HCO ⁺ J=1-0 | 3.34(0.16) | 50.95(0.04) | 1.85(0.11) | 1.70 | | | | |
| | 2.51(0.20) | 47.06(0.11) | 3.15(0.36) | 0.75 | | | | |
| H ¹³ CO ⁺ J=1-0 | 0.59(0.11) | 49.78(0.12) | 1.37(0.28) | 0.40 | 3.9 | 0.5 | 1.9E13 | 4.2E-10 |
| | 0.86(0.12) | 47.91(0.09) | 1.46(0.23) | 0.55 | 4.0 | 0.6 | 3.6E13 | 8.0E-10 |
| HC ₃ N J=10-9 | 2.43(0.18) | 49.03(0.11) | 3.07(0.27) | 0.75 | 5.4 | 0.4 | 9.2E14 | 2.0E-08 |
| HC ₃ N J=14-13 | 1.18(0.19) | 49.12(0.25) | 3.07(0.55) | 0.36 | 6.0 | 0.1 | | |
| HC ₃ N J=15-14 | 0.52(0.13) | 49.29(0.31) | 2.37(0.55) | 0.21 | 6.6 | 0.1 | | |
| SiO J=2-1 | 1.57(0.40) | 48.54(0.61) | 7.28(1.23) | 0.20 | 4.8 | 4.0 | 1.3E13 | 2.9E-10 |
| | 1.44(0.44) | 37.16(2.29) | 14.05(4.13) | 0.10 | | | | |
| SiO J=3-2 | 3.12(0.52) | 44.34(1.75) | 22.01(2.79) | 0.13 | | | | |
| | 0.63(0.24) | 48.66(0.49) | 4.44(1.45) | 0.14 | 3.2 | 0.5 | 8.6E13 | 1.9E-09 |
| HN ¹³ C J=1-0 | 1.56(0.14) | 49.06(0.14) | 3.08(0.30) | 0.48 | 3.5 | 1.0 | 2.5E14 | 5.6E-09 |
| H ₂ CO 2 _{1,2} – 1 _{1,1} | 2.35(0.10) | 50.81(0.04) | 2.38(0.13) | 0.93 | | | | |
| | 1.32(0.09) | 47.42(0.06) | 1.87(0.17) | 0.66 | | | | |
| | T_{ex}^d | V_{LSR}^d | FWHM ^d | τ | T_{ex} | τ | N | |
| CCH N=1-0 | 4.4(0.3) | 49.00(0.08) | 3.02(0.20) | 0.43(0.13) | 4.5 | 0.4 | 1.5E14 | 3.3E-09 |
| N ₂ H ⁺ J=1-0 | 5.58(0.59) | 47.72(0.03) | 0.58(0.03) | 1.88(0.54) | 4.1 | 2.2 | 2.4E13 | 5.3E-10 |
| | 5.53(0.79) | 50.05(0.03) | 0.57(0.04) | 1.66(0.62) | 4.0 | 2.0 | 2.0E13 | 4.4E-10 |

^aFrom Gaussian fits with Gildas/Class

^bThe values for H¹³CO⁺, HC₃N and HN¹³C are derived by assuming a source size of 11 arcsec. The others are derived by assuming a filling factor of 1.

^c $N_{H_2} = 4.5 \times 10^{22}$ cm⁻²

^dFrom hyperfine structure fits with Gildas/Class

N₂H⁺ and enhance the abundance of HCO⁺ by the following reaction (Lee, Bergin & Evans 2004; Busquet et al. 2011):



Therefore, a small N₂H⁺ to H¹³CO⁺ abundance ratio may indicate that clumps are warm and thus chemically evolved. Feng et al. (2016) recently observed a sample of four 70 μ m dark IRDC clumps, whose CO seems to be heavily depleted with depletion factors in the range of 14-50, i.e., about 3-10 times larger than that of G26 clump 6. They also derived high [N₂H⁺]/[H¹³CO⁺]

abundance ratios (~ 400 -10000) in the 70 μ m dark young IRDC clumps, which are more than two orders of magnitudes larger than that of clump 6 in G26 (~ 0.8). Therefore, clump 6 in G26 is more chemically evolved than those IRDC clumps. In addition, the abundance of HC₃N, a hot core tracer, is about two orders of magnitude larger in clump 6 than in the 70 μ m dark IRDC clumps, indicating that G26 clump 6 may be in a more chemically evolved phase. Indeed, protostars have already formed in G26 clump 6.

4.8. Dynamical properties of dense clumps

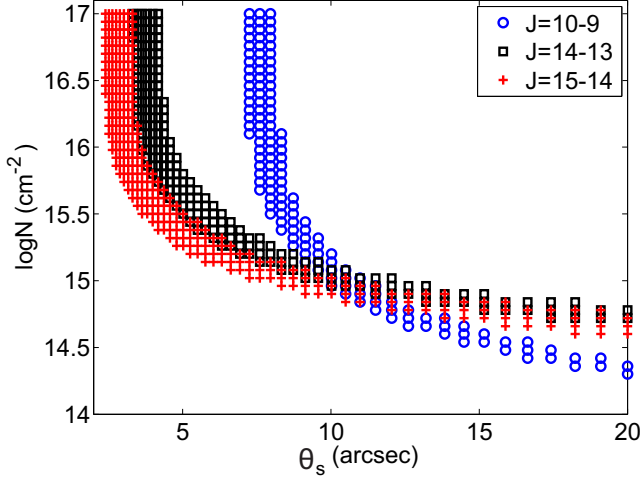


Figure 20. Source size vs. column density in RADEX calculations of HC_3N transitions. The kinetic temperature and H_2 number density in RADEX calculations are fixed to 17 K and $1.8 \times 10^4 \text{ cm}^{-3}$. The source size and column density of HC_3N in best fit are $11''$ ($\sim 0.22 \text{ pc}$) and $9.2 \times 10^{14} \text{ cm}^{-2}$.

The CO molecular line data from the “TOP” and “SAMPLING” mapping surveys can be used to study large scale kinematics (e.g., collisions, filament accretion, outflows). The HCO^+ $J=1-0$ and H_2CO $2_{1,2} - 1_{1,1}$ lines in the KVN survey are also good tracers of kinematics like infall and outflows associated with dense clumps/cores. Below, we study the kinematics of G26 based on the ^{13}CO (2-1) line emission from the “SAMPLING” survey and the HCO^+ $J=1-0$ and H_2CO $2_{1,2} - 1_{1,1}$ lines from KVN observations.

4.8.1. High-velocity Outflows

Outflow wings can be easily identified in the PV diagrams in Figure 16. Figure 21 shows the integrated intensity maps of the outflow emission. Since the blue and red outflow lobes are well separated and have very high flow velocities, neither the very low (pole-on) inclination nor the very high (edge-on) inclination is likely. Therefore, we take 45° as the inclination angle for the outflows with respect to the line of sight. The radii of the blueshifted and redshifted lobes are $\sim 1.6 \text{ pc}$ and $\sim 1.1 \text{ pc}$, respectively. The characteristic outflow velocities of the blueshifted and redshifted lobes are $\sim 5.1 \text{ km s}^{-1}$ and $\sim 3.3 \text{ km s}^{-1}$, respectively. Assuming the excitation temperature of ^{13}CO (2-1) line wing emission is 17 K, i.e., the dust temperature, the integrated intensity can be converted to the outflow masses following Garden et al. (1991). The ^{13}CO abundance (7×10^{-7}) is converted from C^{18}O abundance (1×10^{-7}) with a $[^{13}\text{CO}/\text{C}^{18}\text{O}]$ abundance ratio (~ 7) derived from empirical relations between

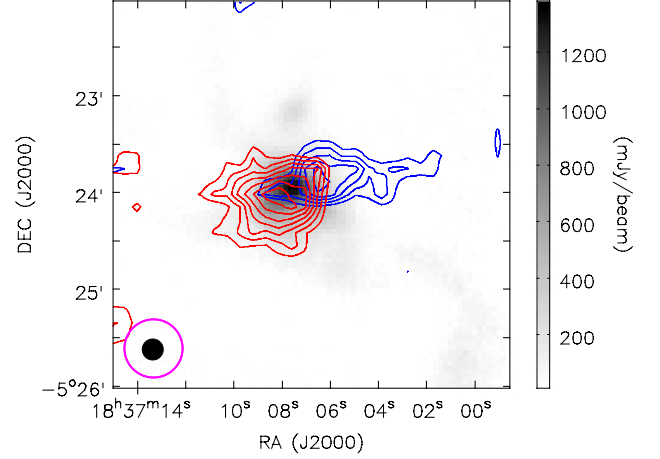


Figure 21. The blueshifted ($43\text{--}46.5 \text{ km s}^{-1}$) and redshifted ($51\text{--}55 \text{ km s}^{-1}$) ^{13}CO (2-1) outflow emission in clump 6 are shown in blue and red contours, respectively. The contour levels of blueshifted outflow emission are $[0.5, 0.6, 0.7, 0.8, 0.9] \times 3.06 \text{ K km s}^{-1}$. The contour levels of redshifted outflow emission are $[0.3, 0.4, 0.5, 0.6, 0.7, 0.8, 0.9] \times 5.65 \text{ K km s}^{-1}$. The SCUBA-2 $850 \mu\text{m}$ continuum emission is shown in gray scale image.

molecular abundances and the Galactocentric distance (Wilson & Rood et al. 1994; Giannetti et al. 2014). The masses of the blueshifted and redshifted lobes are $\sim 67 M_\odot$ and $\sim 97 M_\odot$, respectively. The momentum of the blueshifted and redshifted lobes is $\sim 342 M_\odot \text{ km s}^{-1}$ and $\sim 314 M_\odot \text{ km s}^{-1}$, respectively. The energy of the blueshifted and redshifted lobes are $\sim 1.7 \times 10^{46}$ and $\sim 1.1 \times 10^{46}$ erg, respectively. The dynamical time scales ($t_{\text{dyn}} = \frac{2R}{v_{\text{flow}}}$) of the blueshifted and redshifted lobes are $6.2 \times 10^5 \text{ yr}$ and $6.8 \times 10^5 \text{ yr}$, respectively. The total outflow mass loss rate is $\sim 2.5 \times 10^{-4} M_\odot \text{ yr}^{-1}$.

4.8.2. Outflow driven expansion

The HCO^+ $J=1-0$ and H_2CO $2_{1,2} - 1_{1,1}$ lines show “red asymmetric profiles” morphologies, suggesting expansion. We apply a simple “two layer model” to fit the lines. The model is described in APPENDIX B. The results are presented in Table 3. The expansion velocities inferred from the HCO^+ $J=1-0$ and H_2CO $2_{1,2} - 1_{1,1}$ lines are $\sim 0.15 \text{ km s}^{-1}$ and $\sim 0.06 \text{ km s}^{-1}$, respectively. Assuming the whole clump (with $M \sim 2100 M_\odot$) is in expanding with a velocity of 0.1 km s^{-1} , the total momentum and energy of the expanding clump are $210 M_\odot \text{ km s}^{-1}$ and $\sim 2.1 \times 10^{44}$ erg, respectively. Since it is unlikely that the whole clump is in expansion, these momentum and energy values should be treated as upper limits. Even in this extreme case, however, both the momentum and energy are smaller than those of the low-velocity outflows, indicating that the outflows

Table 3. Parameters of the two layer model

| Line | τ_0 | Φ | J_c | J_f | J_r | V_{cont} | σ | V_{out} |
|---|----------|--------|-------|-------|-------|-----------------------|-----------------------|-----------------------|
| | | | (K) | (K) | (K) | (km s ⁻¹) | (km s ⁻¹) | (km s ⁻¹) |
| HCO ⁺ J=1-0 | 3.56 | 0.74 | 15.70 | 11.69 | 19.60 | 48.98 | 1.04 | 0.15 |
| H ₂ CO 2 _{1,2} – 1 _{1,1} | 2.21 | 0.79 | 15.44 | 12.03 | 19.54 | 49.07 | 0.93 | 0.06 |

have enough energy themselves to drive the envelope expansion.

The virial mass of the clump MM6 considering turbulent support can be derived as $\frac{M_{vir}}{M_\odot} = 210(\frac{R}{pc})(\frac{\Delta V}{km s^{-1}})^2$ (MacLaren et al. 1988; Zhang et al. 2015), where R is the radius (1.15 pc) and ΔV is the linewidth (2.22 km s⁻¹) of C¹⁸O (1-0). The virial mass is $\sim 1200 M_\odot$, which is much smaller than the clump mass ($\sim 2100 M_{sun}$), indicating that the whole clump may be still in collapse. Therefore, the expansion revealed by HCO⁺ J=1-0 and H₂CO 2_{1,2} – 1_{1,1} lines should be very localized.

Figure 22 shows a cartoon to describe the PGCC G26 based on the results from the present data. Our findings of G26 are: (i) The G26 filament may be formed due to large-scale compression flows evidenced by the temperature and velocity gradients across its natal cloud; (ii) Sub-filaments in G26 have different velocities and may interact with each other; (iii) The central massive clump where massive stars are forming may still accrete gas along sub-filaments; (iv) The massive clump in whole may be still in global collapse while its inner part seems to be undergoing expansion due to outflow feedback.

5. SUMMARY

We introduce here the survey strategy, observations, data reduction and example science for a joint survey program “TOP-SCOPE”, targeting 1000-2000 Planck Galactic Cold Clumps at TRA0 14-m and JCMT 15-m telescopes. “TOP,” standing for “TRA0 Observations of Planck cold clumps,” is a ¹²CO/¹³CO J=1-0 line survey of 2000 PGCCs with the Taeduk Radio Astronomy Observatory 14-meter telescope. “SCOPE,” standing for “SCUBA-2 Continuum Observations of Pre-protostellar Evolution,” is a legacy survey using SCUBA-2 on the James Clerk Maxwell Telescope (JCMT) at the East Asia Observatory (EAO) to survey 1000 PGCCs at 850 μ m continuum. Follow-up observations toward SCUBA-2 detected dense clumps/cores with other ground-based telescopes (NRO 45-m, SMT, KVN, SMA, ALMA) are on-going.

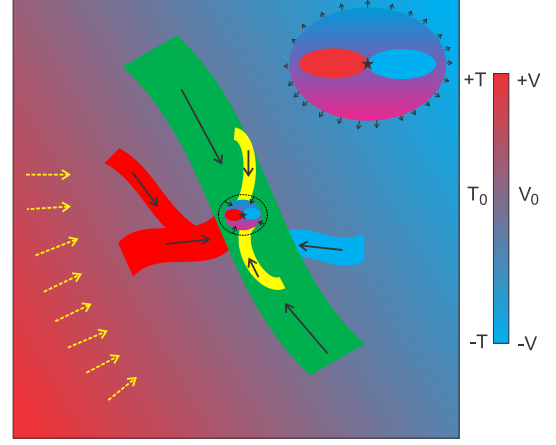


Figure 22. This cartoon shows the environment of PGCC G26.53+0.17. The main gas filament is shown in green. The SCUBA-2 filament is shown in yellow. Other small sub-filaments are shown in red, green, and blue. PGCC G26.53+0.17 is located in a parent cloud with velocity and temperature gradients along the east-west direction. The central clump MM6 (dashed ellipse) may be still in collapse while its inner part (color filled ellipse) is undergoing expansion due to outflow feedback from the protostars. The zoomed-in picture of the central clump is shown in the upper-right corner. The red and blue ellipses represent the outflow lobes. The arrows show the directions of gas flows.

We introduced the example science of the “TOP-SCOPE” survey and other joint survey programs with an exemplar source, PGCC G26.53+0.17 (i.e., G26). The main findings for G26 are:

(1). The total mass, the length and the mean line-mass (M/L) of the G26 filament revealed are $\sim 6200 M_\odot$, ~ 12 and $\sim 500 M_\odot pc^{-1}$, respectively. Both the length and line-mass of G26 are comparable to those of the integral shaped filament in the Orion A cloud (Kainulainen et al. 2017).

(2). Ten clumps are found along the filament with a mean separation of ~ 1.3 pc. Only two of them (MM6, MM10) are associated with protostars. The others seem to be starless. The clumps in G26 especially the dense and massive ones are very likely bounded by gravity and have the ability to form high-mass stars. The typical

spacing and mass of clumps in G26 are comparable to the predictions in gravitational fragmentation of an isothermal, non-magnetized, and turbulent supported cylinder, suggesting that the fragmentation in G26 from cloud (at ~ 10 pc scale) to clump (at ~ 1 pc scale) is very likely dominated by turbulence.

(3). Evidence for grain growth along the filament is found. The histograms of dust emissivity spectral index β can be well fitted with two normal distributions regardless of whether or not $850 \mu\text{m}$ data were included in the SED fits. Such a bimodal behavior in β distribution suggests grain growth along the filament.

(4). The N-PDF and two-point correlation functions (2PT) of the natal cloud harboring G26 filament are investigated. The slope (-3.9) of the power-law tail is comparable to those of IRDCs G28.34+0.06 (-3.9) and G14.225-0.506 (-4.1). The 2PT function shows a smooth decay of correlation strengths over all spatial scales up to ~ 15 pc. The flat 2PT correlation indicates that the column density distribution of G26 is very homogenous over all spatial scales and the mass is less concentrated overall than in high-mass protoclusters.

(5). From comparing the SCUBA-2 images with Planck+SCUBA-2 combined images, we found that only 30%-40% of the cloud gas in G26 is dense gas.

(6). The G26 filament may be formed due to large-scale compression flows evidenced by the temperature and velocity gradients across its natal cloud. Sub-filaments in G26 have different velocities and may interact with each other. The central massive clump where massive stars are forming may still accrete gas along sub-filaments with a natal mass inflow rate of $\sim 1 \times 10^{-3} M_{\odot} \text{ yr}^{-1}$.

(7). The mass of the most massive clump MM6 is much larger than its virial mass, suggesting that it may be still in global collapse. Its inner part traced by $\text{HCO}^+ \text{ J}=1-0$ and $\text{H}_2\text{CO } 2_{1,2}-1_{1,1}$ lines, however, seems to be undergoing expansion due to outflow feedback. The total mass and total outflow mass loss rate of the outflows are $\sim 164 M_{\odot}$ and $\sim 2.5 \times 10^{-4} M_{\odot} \text{ yr}^{-1}$, respectively.

(8). The most massive clump MM6 has much smaller CO gas depletion factor, much smaller $[\text{N}_2\text{H}^+]/[\text{H}^{13}\text{CO}^+]$ abundance ratio, and much larger HC_3N abundance than $70 \mu\text{m}$ dark young IRDC clumps, indicating that clump 6 containing protostars is more chemically evolved and is in a more chemically evolved phase.

All the example science discussed for G26 will be fully explored through more statistical studies with the “TOP-SCOPE” data and other follow-up survey data toward larger samples.

6. APPENDIX A OBSERVATIONS AND DATA REDUCTION FOR PGCC G26.53+0.17

The JCMT/SCUBA-2, TRA0 14-m, SMT 10-m and KVN 21-m observations of PGCC G26.53+0.17 are summarized in Table A1.

6.1. *Herschel archival data*

G26 was mapped with Herschel as part of the Hi-GAL project (Molinari et al. 2010). The observations include $70 \mu\text{m}$, $160 \mu\text{m}$, $250 \mu\text{m}$, $350 \mu\text{m}$, and $500 \mu\text{m}$ bands that were observed in parallel mode with $60''/\text{s}$ scanning speed. We use the level 2.5 maps available in the Herschel Science Archive⁸, SPIRE data ($250\text{-}500 \mu\text{m}$) using extended source calibration and the PACS maps ($70, 160 \mu\text{m}$) made with the UNIMAP method (Piazzo et al. 2015). The resolutions of the original maps are approximately $12''$, $15''$, $18.3''$, $24.9''$, and $36.3''$, respectively. Given the fast scanning speed, the effective PACS beams are elongated.

Figure A1 presents the dust temperature and column density maps of PGCC G26.53+0.17 derived from Herschel/SPIRE data. The column density maps in Figure A1 are used as external masks in the below JCMT/SCUBA-2 data reduction. We fit the SEDs pixel-by-pixel with a modified blackbody function using the three Herschel/SPIRE bands. The modified blackbody function is:

$$F(\nu) = F(\nu_0) \frac{B(\nu, T)}{B(\nu_0, T)} \left(\frac{\nu}{\nu_0} \right)^{\beta} = \kappa(\nu) B(T) M / d^2, \quad (\text{A1})$$

where $F(\nu)$ is the flux density at frequency ν , ν_0 is a selected reference frequency, B stands for the Planck law, β is the opacity spectra index, M is the clump mass and d is the cloud distance. The Herschel data were fitted with modified blackbody spectra with $\beta = 1.8$ to estimate colour correction factors and to derive estimates of the dust optical depth at a common spatial resolution of $40''$. The values were also converted to estimates of hydrogen column density assuming a dust opacity of $\kappa = 0.1(\nu/1000 \text{ GHz})^{\beta} \text{ cm}^2/\text{g}$ (Beckwith et al. 1990).

The upper panel in Figure A1 presents the dust temperature and column density maps derived from Herschel/SPIRE data without applying any local spatial filtering. A temperature gradient along the SE-NW direction is seen in the dust temperature map. The lower panel in Figure A1 presents the column density map of the G26 filament derived from Herschel/SPIRE data

⁸ <http://archives.esac.esa.int/hsa>

Table A1. Observations of PGCC G26.53+0.17

| JCMT/SCUBA-2 850 μm continuum observations | | | | | | | |
|--|-----------------|---------------|----------------------------|----------------|-------------------------|------------------------|--------------------------------------|
| Date | Mode | τ_{225} | $\theta_B('')$ | FCF | rms (mJy beam $^{-1}$) | Tracer | |
| 2016-04-21 | CV Daisy | 0.057 | 14.1 | 543.3 | 8.3 | dense clumps/filaments | |
| 2017-05-13 | Pong1800 | 0.090 | 14.1 | 513.2 | 18.7 | dense clumps/filaments | |
| 2017-05-14 | Pong1800 | 0.115 | 14.1 | 556.7 | 17.5 | dense clumps/filaments | |
| 2017-05-16 | Pong1800 | 0.071 | 14.1 | 547.0 | 25.7 | dense clumps/filaments | |
| 2017-05-23 | Pong1800 | 0.122 | 14.1 | 561.6 | 30.7 | dense clumps/filaments | |
| 2017-05 | Pong1800 | — | 14.1 | | 10.7 | dense clumps/filaments | |
| TRAO 14-m OTF observations on 2017-01-09 ^a | | | | | | | |
| Line | Frequency (GHz) | T_{sys} (K) | Δv (km s $^{-1}$) | $\theta_B('')$ | B_{eff} | rms (K) | Tracer |
| ^{12}CO (1-0) | 115.27120 | 551 | 0.32 | 45 | 0.51 | 1.1 | large scale structure and kinematics |
| ^{13}CO (1-0) | 110.20135 | 244 | 0.33 | 47 | 0.54 | 0.4 | large scale structure and kinematics |
| C^{18}O (1-0) | 109.78217 | 233 | 0.33 | 47 | 0.54 | 0.2 | dense clumps/filament |
| SMT 10-m OTF observations ^a | | | | | | | |
| Line | Frequency (GHz) | T_{sys} (K) | Δv (km s $^{-1}$) | $\theta_B('')$ | B_{eff} | rms (K) | Tracer |
| ^{13}CO (2-1) | 220.39868 | 250 | 0.34 | 36 | 0.70 | 0.2 | large scale structure and kinematics |
| KVN 21-m single pointing observations on 2017-05-27 ^a | | | | | | | |
| Line | Frequency (GHz) | T_{sys} (K) | Δv (km s $^{-1}$) | $\theta_B('')$ | B_{eff} | rms (K) | Tracer |
| H_2O 6 $_{1,6} - 5_{2,3}$ ^b | 22.23508 | 110 | 0.42 | 126 | 0.46 | 0.08 | maser & shock tracer |
| CH_3OH 7 $_0 - 6_{1A+}$ | 44.06941 | 117 | 0.11 | 63 | 0.48 | 0.12 | maser & shock tracer |
| HCN J=1-0 | 88.63185 | 287 | 0.42 | 32 | 0.41 | 0.09 | outflow & infall |
| HCO^+ J=1-0 | 89.18852 | 203 | 0.21 | 32 | 0.41 | 0.10 | outflow & infall |
| H^{13}CO^+ J=1-0 | 86.75429 | 200 | 0.22 | 32 | 0.41 | 0.08 | dense gas, V_{lsr} & σ |
| HC_3N J=10-9 | 90.97902 | 308 | 0.41 | 32 | 0.41 | 0.10 | hot core |
| HC_3N J=14-13 | 127.36767 | 496 | 0.59 | 23 | 0.39 | 0.09 | hot core |
| HC_3N J=15-14 | 136.46441 | 437 | 0.55 | 23 | 0.39 | 0.07 | hot core |
| SiO J=2-1 | 86.84696 | 240 | 1.73 | 32 | 0.41 | 0.03 | shock tracer |
| SiO J=3-2 | 130.26861 | 345 | 1.15 | 23 | 0.39 | 0.04 | shock tracer |
| HN^{13}C J=1-0 | 87.09085 | 240 | 0.86 | 32 | 0.41 | 0.05 | dense gas, V_{lsr} & σ |
| CCH N=1-0 | 87.31692 | 206 | 0.43 | 32 | 0.41 | 0.07 | photodissociation tracer |
| N_2H^+ J=1-0 | 93.17340 | 236 | 0.10 | 32 | 0.41 | 0.09 | dense gas, V_{lsr} & σ |
| H_2CO 2 $_{1,2} - 1_{1,1}$ | 140.83950 | 282 | 0.13 | 23 | 0.39 | 0.09 | outflow & infall |
| HDCO 2 $_{0,2} - 1_{0,1}$ ^b | 128.81286 | 477 | 1.15 | 23 | 0.39 | 0.06 | deuterium fraction |

^aFor molecular line observations, the columns are line name, line frequency, system temperature, velocity resolution, beam size, main beam efficiency, rms level in brightness temperature and tracers. The spectra are usually slightly smoothed to get a better S/N level. The velocity resolutions are thus different from original ones. The rms levels were estimated from smoothed spectra.

^bThese lines were not detected toward PGCC G26.53+0.17.

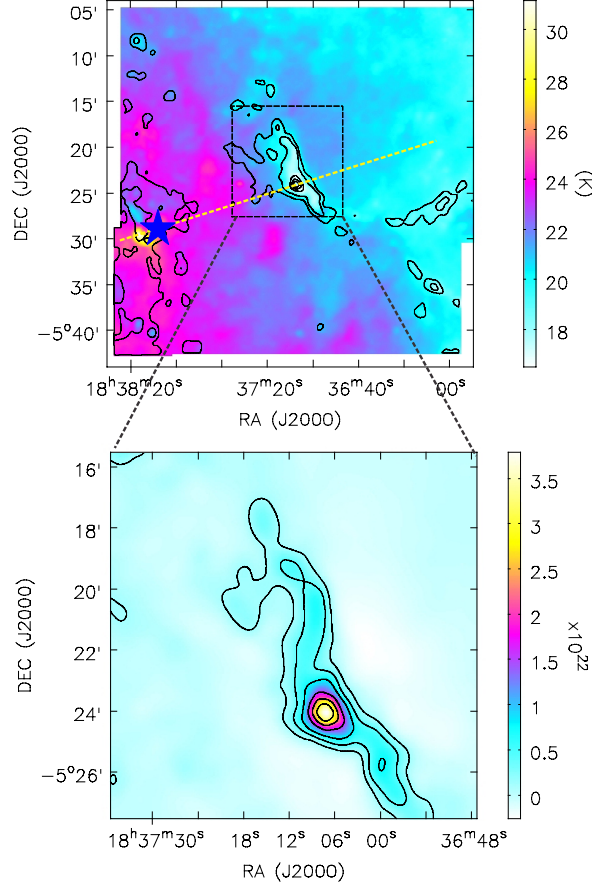


Figure A1. Upper panel: From Herschel data, column density contours overlaid on a dust temperature color image. The contour levels are $[0.15, 0.2, 0.4, 0.6, 0.8] \times 4.8 \times 10^{22} \text{ cm}^{-2}$. The blue star marks the position of the infrared bubble shown in Figure 12. The yellow dashed line marks the direction along which the cuts in Figure 13 were made. Lower panel: Close-up of column density map from Herschel data over the SCUBA-2 mapped region. The large scale emission in Herschel bands was filtered out. The contour levels are $[0.03, 0.1, 0.2, 0.4, 0.6, 0.8] \times 3.8 \times 10^{22} \text{ cm}^{-2}$.

with the extended emission larger than $300''$ filtered out. The last closed contours in the column density maps outline the external masks used in the JCMT/SCUBA-2 data reduction in section 6.2.

6.2. JCMT/SCUBA-2 data reduction

The CV Daisy observations of G26 were conducted on 21 April 2016. To test how well CV Daisy observations can recover faint and extended emission, we also conducted Pong1800 maps from 13 May to 23 May 2017 for comparison. In contrast to the CV Daisy observations, the Pong1800 maps, which are designed for mapping larger fields, cover a circular area of $\sim 30'$ diameter with a uniform sensitivity and thus better to recover extended emission.

The JCMT data reduction methods are similar to those used in the JCMT Gould Belt Survey and JCMT transient survey (Ward-Thompson et al. 2007; Mairs et al. 2015, 2017, Herczeg et al. submitted). The data reduction procedure was performed using the iterative map-making technique *makemap* (Chapin et al. 2013) in the SMURF package of the Starlink software (Currie et al. 2014; Jenness et al. 2013). The user can also supply an external mask which surrounds the astronomical signal to constrain the solution derived by *makemap*, which together with a larger spatial filter, can better recover faint and extended structure. Generally, the largest recoverable scales are $\sim 600''$ before atmospheric signal becomes significant. The details of JCMT data reduction can be found in Mairs et al. (2015, 2017). In this paper, we performed four individual data reductions labeled **R1**, **R2**, **R3**, and **R4** with different external masks and spatial filters for comparison. The parameters of *makemap* used in the data reductions are the same as in Mairs et al. (2015).

(1) **R1**: We first run *makemap* with an effective spatial filter of $200''$ and no external mask. Then an external mask was constructed from the final map with $S/N > 3$. The external mask was used to constrain the solution derived by *makemap* in a second run. Therefore, the structure was filtered to $200''$ in the **R1** data reduction. This data reduction is efficient to detect dense clumps and is used in the first data release of the “SCOPE” project. The upper panel of Figure A2 shows the SCUBA-2 $850 \mu\text{m}$ continuum emission in the **R1** data reduction.

(2) **R2**: An external mask from the Herschel data (the last closed contour in the lower panel of Figure A1) was applied in the data reduction. The external mask corresponds to the contour of 3% of the peak column density value, which is the largest astronomical structure (see the blue contour in the lower panel of Figure A2) that could be recovered in the CV Daisy map. Besides the external mask, an effective spatial filter of $300''$ was applied in the data reduction with *makemap*. The lower panel of Figure A2 shows the SCUBA-2 $850 \mu\text{m}$ continuum emission in the **R2** data reduction. Compared with **R1**, **R2** better reveals not only dense clumps but also extended structures between them. The peak flux density ($1.40 \text{ Jy beam}^{-1}$) in **R2** is slightly larger than the value ($1.35 \text{ Jy beam}^{-1}$) in **R1**.

(3) **R3**: Same as **R1** but with a larger effective spatial filter of $600''$. Figure A3a shows the SCUBA-2 $850 \mu\text{m}$ continuum emission in the **R3** data reduction. In contrast to **R1** and **R2**, **R3** recovers more extended emission.

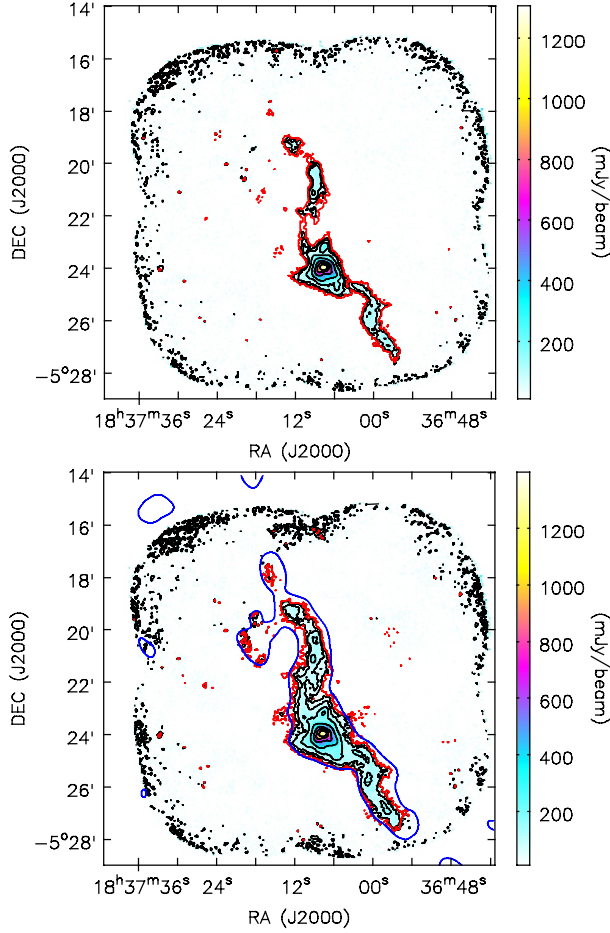


Figure A2. Upper panel: The SCUBA-2 850 μm continuum emission in the **R1** data reduction for G26. The contour levels are $[0.03, 0.05, 0.1, 0.2, 0.4, 0.6, 0.8] \times 1.35 \text{ Jy beam}^{-1}$. Lower panel: The SCUBA-2 850 μm continuum emission in the **R2** data reduction. The contour levels are $[0.03, 0.05, 0.1, 0.2, 0.4, 0.6, 0.8] \times 1.40 \text{ Jy beam}^{-1}$. The red contour in both panels shows the S/N level of 3.

(4).**R4**: Same as **R2** but with a larger effective spatial filter of $600''$. The external mask was constructed from the Herschel data without any spatial filtering (the last closed contour in the upper panel of Figure A1). The external mask corresponds to the contour of 15% of the peak column density value, which is the largest astronomical structure (see the blue contour in Figure A3b) could be recovered in the CV Daisy map. Figure A3b shows the SCUBA-2 850 μm continuum emission in the **R4** data reduction. Only the central coherent structure in the masked region is reliable. In general, **R4** and **R3** reveal similar structure. With the external mask from Herschel, makemap, however, recovers more extended and faint structures in **R4** than in **R3**. Figure A3c reveals the extended emission in the difference image between **R4** and **R2**. **R4** recovers a

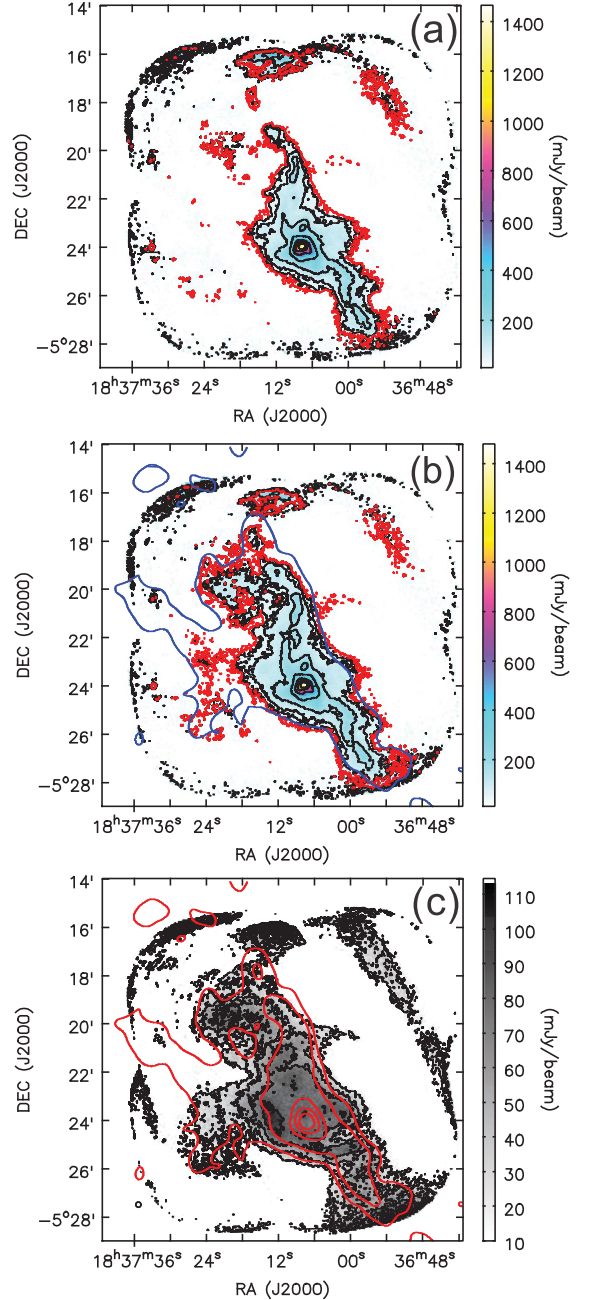


Figure A3. (a). The SCUBA-2 850 μm continuum emission in the **R3** data reduction is shown in color-scale image and black contours. The contour levels are $[0.03, 0.05, 0.1, 0.2, 0.4, 0.6, 0.8] \times 1.47 \text{ Jy beam}^{-1}$. The red contour shows the S/N level of 3. (b). The SCUBA-2 850 μm continuum emission in the **R4** data reduction is shown in color-scale image and black contours. The contour levels are $[0.03, 0.05, 0.1, 0.2, 0.4, 0.6, 0.8] \times 1.48 \text{ Jy beam}^{-1}$. The red contour shows the S/N level of 3. The blue contour outlines the external mask from the Herschel column density map. (c). The extended SCUBA-2 850 μm continuum emission (**R4**-**R2**) is shown in gray-scale image and black contours. The contour levels are $[0.2, 0.4, 0.6, 0.8] \times 0.11 \text{ Jy beam}^{-1}$. The red contours show the column density derived from Herschel/SPIRE data. The contour levels are $[0.15, 0.2, 0.4, 0.6, 0.8] \times 4.8 \times 10^{22} \text{ cm}^{-2}$.

more flattened structure with extended emission (~ 50 mJy beam $^{-1}$) than **R2**.

In general, maps with external masks recover more flux. Therefore, we suggest to apply external masks in SCUBA-2 data reduction if Herschel data are available. Although **R1** was used in the first data release of the SCOPE survey, **R1** cannot recover the flux of the dense clumps as well as the other data reductions (**R2**, **R3** and **R4**). **R3** can recover most flux but detect the least number of dense clumps. Therefore, in this paper (except in section 4.2), we mainly use the data reductions **R2** and **R4** in the further analysis. **R2** is very efficient to reveal dense structures (e.g., dense clumps and filaments). In contrast, **R4** recovers more extended structures surrounding the dense clumps.

6.3. Comparing Daisy map with Pong1800 map

To verify the detection of faint and extended structure in CV Daisy maps, we compare the Daisy and Pong1800 maps, both of which are obtained with the **R4** imaging scheme. Figure A4a shows the Pong1800 map. In Figure A4b, we compare Daisy and Pong1800 maps. In general, the Daisy map and the Pong1800 map show very consistent morphology, indicating that the Daisy map can recover large scale structures as well as the Pong map. The flux recovered in the Daisy map is also linearly correlated with the flux in the Pong map as shown in Figure A4c: $Flux_{Pong} = (0.883 \pm 0.003)Flux_{Daisy} - (28.062 \pm 0.532)$; $R^2 = 0.95$. The Pong1800 map will be discussed in detail in another paper.

7. APPENDIX B

“TWO LAYER” MODELS FOR FITTING HCO^+ $J=1-0$ AND H_2CO $2_{1,2} - 1_{1,1}$ LINES

To investigate the properties of the expanding gas, the profiles of the HCO^+ $J=1-0$ and H_2CO $2_{1,2} - 1_{1,1}$ lines were modeled with an enhanced version of the “two-layer” model, which is similar to the infall models used in Myers et al. (1996); Di Francesco et al. (2002). In this model, a continuum source is located in between the two layers. Each layer has peak optical depth τ_0 , velocity dispersion σ , and expanding speed V_{exp} with respect to the continuum source. The gas is moving away from the continuum source if V_{out} is positive. The line brightness temperature at velocity V is:

$$\Delta T_B = (J_f - J_{cr})[1 - \exp(-\tau_f)] + (1 - \Phi)(J_r - J_b) \times [1 - \exp(-\tau_r - \tau_f)]$$

where

$$J_{cr} = \Phi J_c + (1 - \Phi)J_r$$

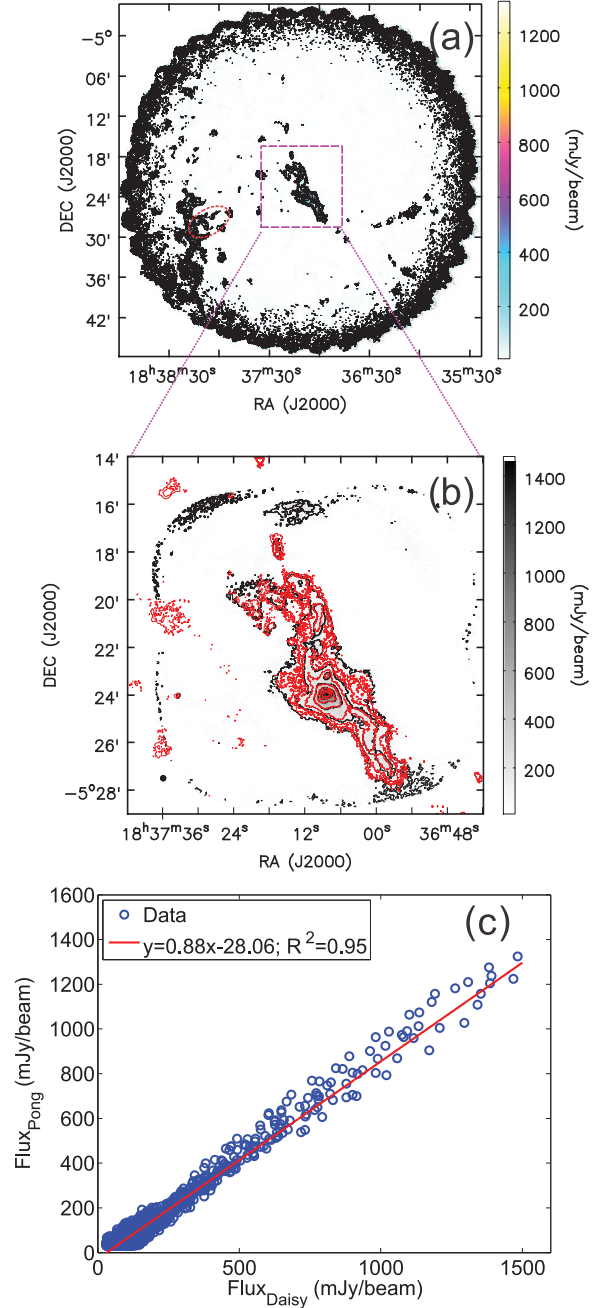


Figure A4. (a). The Pong1800 SCUBA-2 850 μ m map. The contours are $[0.03, 0.05, 0.1, 0.2, 0.4, 0.6, 0.8] \times 1.32$ Jy beam $^{-1}$. The red dashed ellipse marks the position of the infrared bubble shown in Figure 12. (b). Close-up of the Pong1800 SCUBA-2 850 μ m map in the Daisy map region is shown in red contours. The gray scale image and black contours show the CV Daisy map. The contour levels are $[0.05, 0.1, 0.2, 0.4, 0.6, 0.8] \times 1.48$ Jy beam $^{-1}$. (c). Comparison of flux in the Daisy map with flux in the Pong map for pixels with $S/N > 3$. The red line shows the linear fit.

and

$$\tau_f = \tau_0 \exp\left[\frac{-(V + V_{out} - V_{cont})^2}{2\sigma^2}\right]$$

$$\tau_r = \tau_0 \exp\left[\frac{-(V - V_{out} - V_{cont})^2}{2\sigma^2}\right]$$

J_c , J_f , J_r , J_b are the Planck temperatures of the continuum source, the "front" layer, the "rear" layer and the cosmic background radiation, respectively. $J = \frac{h\nu}{k} \frac{1}{\exp(T_0/T)-1}$ is related to the blackbody temperature T at frequency ν , where h is Planck's constant, and k is Boltzmann's constant. Φ and V_{cont} are the filling factors and the systemic velocities of the continuum sources, respectively.

ACKNOWLEDGMENT

Tie Liu is supported by KASI fellowship and EACOA fellowship. Ke Wang is supported by grant WA3628-1/1 of the German Research Foundation (DFG) through the priority program 1573 ("Physics of the Interstellar Medium"). S.-L. Qin is supported by the Joint Research Fund in Astronomy (U1631237) under cooperative agreement between the National Natural Science Foundation of China (NSFC) and Chinese Academy of Sciences (CAS), by the Top Talents Program of Yunnan Province (2015HA030). MJ acknowledges the support of the Academy of Finland Grant No. 285769.

JMa acknowledges the support of ERC-2015-STG No. 679852 RADFEEDBACK. CWL was supported by the Basic Science Research Program through the National Research Foundation of Korea (NRF) funded by the Ministry of Education, Science, and Technology (NRF-2016R1A2B4012593). Miju Kang was supported by Basic Science Research Program through the National Research Foundation of Korea(NRF) funded by the Ministry of Science, ICT & Future Planning (No. NRF-2015R1C1A1A01052160). The James Clerk Maxwell Telescope is operated by the East Asian Observatory on behalf of The National Astronomical Observatory of Japan, Academia Sinica Institute of Astronomy and Astrophysics, the Korea Astronomy and Space Science Institute, the National Astronomical Observatories of China and the Chinese Academy of Sciences (Grant No. XDB09000000), with additional funding support from the Science and Technology Facilities Council of the United Kingdom and participating universities in the United Kingdom and Canada. The data presented in this paper are based on the ESO-ARO programme ID 196.C-0999(A). DM, GG and LB acknowledge support from CONICYT Project PFB-06.

Software: Starlink software (Currie et al. 2014; Jenness et al. 2013; Chapin et al. 2013), GILDAS (<http://www.iram.fr/IRAMFR/GILDAS/>), RADEX (Van der Tak et al. 2007), MIRIAD (<https://www.cfa.harvard.edu/sma/miriad/>) and CASA (<https://casa.nrao.edu/>).

REFERENCES

- Alves, J., Lombardi, M., & Lada, C. J., 2007, A&A, 462L, 17
- André, Ph., Men'shchikov, A., Bontemps, S., et al. 2010, A&A, 518, 102
- André, P., Di Francesco, J., Ward-Thompson, D., et al. 2014, Protostars and Planets VI, Henrik Beuther, Ralf S. Klessen, Cornelis P. Dullemond, and Thomas Henning (eds.), University of Arizona Press, Tucson, 914 pp., p.27-51
- Bacmann A., Lefloch B., Ceccarelli C., et al. 2002. A&A, 389, L6
- Bally, J., Langer, W. D., Stark, A. A., Wilson, R. W., 1987, ApJ, 312, 45
- Bergin, E. A. & Tafalla, M., 2007, ARA&A, 45, 339
- Berry D. S., 2015, Astron. Comput., 10, 22
- Berry D. S., Reinhold K., Jenness T., Economou F., 2007, in Shaw R. A., Hill F., Bell D. J., eds, ASP Conf. Ser. Vol. 376, Astronomical Data Analysis Software and Systems XVI. Astron. Soc. Pac., San Francisco, p. 425
- Beckwith, S. V. W., Sargent, A. I., Chini, R. S., Guesten, R., 1990, AJ, 99, 924
- Bintley, D., Holland, W. S., MacIntosh, M., J., et al. ,2014, SPIE, 9153, 3
- Busquet, G., Estalella, R., Zhang, Q., et al. 2011, A&A, 525, 141
- Caselli, P., 2011, IAUS, 280, 19
- Chandrasekhar S. & Fermi E., 1953, ApJ, 118, 116
- Chapin, E. L., Berry, D. S., Gibb, A. G., et al. 2013, MNRAS, 430, 2545
- Chen, M. C.-Y., Di Francesco, J., Johnstone, D., et al. 2016, ApJ, 826, 95
- Contreras, Y., Schuller, F., Urquhart, J. S., et al. 2013, A&A, 549, 45
- Contreras, Y., Garay, G., Rathborne, J. M., Sanhueza, P., 2016, MNRAS, 456, 2041
- Csengeri, T., Weiss, A., Wyrowski, F., et al. 2016, A&A, 585, 104

- Cox, N. L. J., Arzoumanian, D., André, Ph., et al. A&A, 590, 110
- Currie, M. J., Berry, D. S., Jenness, T., et al. 2014, in *Astronomical Society of the Pacific Conference Series*, Vol. 485, *Astronomical Data Analysis Software and Systems XXIII*, ed. N. Manset & P. Forshay, 391
- Dempsey, J. T., Friberg, P., Jenness, T., et al., 2013, MNRAS, 430, 2534
- Di Francesco, J., Myers, P. C., Wilner, D. J., Ohashi, N., Mardones, D., 2001, ApJ, 562, 770
- Eden, D. J., Moore, T. J. T., Plume, R., et al. 2017, MNRAS, 469, 2163
- Federrath, C., & Klessen, R. S. 2013, ApJ, 763, 51
- Federrath, C., 2016, MNRAS, 457, 375
- Feng, S., Beuther, H., Zhang, Q., et al. 2016, A&A, 592, 21
- Fiege, Jason D. & Pudritz, Ralph E., 2000, MNRAS, 311, 105
- Fischera J., & Martin P. G., 2012, A&A, 542, A77
- Goldsmith, P. F., Pineda, J. L., Langer, W. D., et al. 2016, ApJ, 824, 141
- Garden, R. P., Hayashi, M., Hasegawa, T., Gatley, I., Kaifu, N., 1991, ApJ, 374, 540
- Gao, Y., & Solomon, P. M. 2004, ApJ, 606, 271
- Giannetti, A., Wyrowski, F., Brand, J., et al. 2014, A&A, 570, 65
- Holland, W. S., Bintley, D., Chapin, E. L., et al., 2013, MNRAS, 430, 2513
- Inutsuka S.-I., & Miyama S. M., 1992, ApJ, 388, 392
- Inutsuka, S., Inoue, T., Iwasaki, K., et al. 2015, A&A, 580, 49
- Jackson J. M., Finn S. C., Chambers E. T., Rathborne J. M., Simon R., 2010, ApJ, 719, L185
- Jenness, T., Chapin, E. L., Berry, D. S., et al. 2013, SMURF: Submillimeter User Reduction Facility, *Astrophysics Source Code Library*, , ascl:1310.007:
- Jiménez-Serra, I., Caselli, P., Tan, J. C., et al. 2010, MNRAS, 406, 187
- Johnstone, D., Wilson, C. D., Moriarty-Schieven, et al. 2000, ApJ, 545, 327
- Johnstone, D., Di Francesco, J., & Kirk, H., 2004, ApJ, 611L, 45
- Juvela, M., Ristorcelli, I., Pelkonen, V.-M., et al. 2011, A&A, 527, 111
- Juvela, M., Ristorcelli, I., Pagani, L., et al. 2012, A&A, 541, 12
- Juvela, M., Ristorcelli, I., Marshall, D. J., et al. 2015a, A&A, 584, 93
- Juvela, M., Demyk, K., Doi, Y., et al. 2015b, A&A, 584, 94
- Juvela, M., He, J., Pattle, K., et al., 2017, A&A, in press, arXiv:1711.09425
- Kang, M., Choi, M., Stutz, A. M., Tatematsu, K., 2015, ApJ, 814, 31
- Kainulainen, J., Stutz, A. M., Stanke, T., et al. 2017, A&A, 600, 141
- Kauffmann J., & Pillai T., 2010, ApJ, 723, L7
- Kennicutt, R. C., Jr. 1998, ApJ, 498, 541
- Kirk, H., Johnstone, D., & Di Francesco, J., 2006, ApJ, 646, 1009
- Kirk, H., Myers, P. C., Bourke, T. L., et al. 2013, ApJ, 766, 115
- Klessen, R. S. 2000, ApJ, 535, 869
- Könyves, V., André, Ph., Men'shchikov, A., et al. 2010, A&A, 518, 106
- Könyves, V., André, Ph., Men'shchikov, A., et al. 2015, A&A, 584, 91
- Kritsuk, A. G., Norman, M. L., & Wagner, R. 2011, ApJL, 727, L20
- Lada, C. J., Lombardi, M., & Alves, J. F. 2010, ApJ, 724, 687
- Lee, J.-E., Bergin, E. A., & Evans, N. J., II, 2004, ApJ, 617, 360
- Li, G.-X., Urquhart, J. S., Leurini, S., et al. 2016, A&A, 591, 5
- Li G.-X., 2017, MNRAS, 465, 667
- Li, P. S., Klein, R. I., McKee, C. F., et al. 2018, MNRAS, 473, 4220
- Lin, Y., Liu, H. B., Li, D., et al. 2016, ApJ, 828, 32
- Lin, Y., Liu, H. B., Dale, J. E., et al., 2017, ApJ, 840, 22
- Liu, T., Wu, Y., Zhang, H., 2012, ApJS, 202, 4
- Liu, T., Wu, Y., Zhang, H., 2013, ApJ, 775, L2
- Liu, T., Wu, Y., Wu, J., Qin, S.-L., Zhang, H., 2013b, MNRAS, 436, 1335
- Liu, T., Wu, Y., Mardones, D., et al. 2014, PKAS, 30, 79L
- Liu, H. B., Galván-Madrid, R., Jiménez-Serra, I., et al. 2015, ApJ, 804, 37
- Liu, T., Zhang, Q., Kim, K. -T., et al. 2016, ApJS, 222, 7
- Liu, T., Zhang, Q., Kim, K.-T., et al. 2016b, ApJ, 824, 31
- Liu, T., Kim, K.-T., Yoo, H., et al., 2016c, ApJ, 829, 59
- Liu, T., Lacy, J., Li, P. S., et al., 2017, ApJ, 849, 25
- MacLaren, I., Richardson, K. M., Wolfendale, A. W., 1988, ApJ, 333, 821
- Mairs, S., Johnstone, D., Kirk, H., et al. 2015, MNRAS, 454, 2557
- Mairs, S., Lane, J., Johnstone, D., et al., 2017, arXiv:1706.01897M
- Meng, F., Wu, Y., Liu, T., 2013, ApJS209, 37
- Montillaud, J., Juvela, M., Rivera-Ingraham, A., et al., 2015, A&A, 584, 92
- Molinari, S., Swinyard, B., Bally, J., et al., 2010, A&A, 518, L100

- Montier, L. A., Pelkonen, V.-M., Juvela, M., Ristorcelli, I., Marshall, D. J., 2010, *A&A*, 522, 83
- Moore, T. J. T., Plume, R., Thompson, M. A., et al., 2015, *MNRAS*, 453, 4264
- Motte, F., Andre, P., & Neri, R., 1998, *A&A*, 336, 150
- Myers, P. C., Mardones, D., Tafalla, M., Williams, J. P., & Wilner, D. J. 1996, *ApJ*, 465, L133
- Ormel, C. W., Paszun, D., Dominik, C., Tielens, A. G. G. M., 2009, *A&A*, 502, 8450
- Palmeirim, P., André, Ph., Kirk, J., et al., 2013, *A&A*, 550, 38
- Peretto, N. & Fuller, G. A., 2009, *A&A*, 505, 405
- Peretto, N., André, Ph.; Könyves, V., et al., 2012, *A&A*, 541, 63
- Peretto, N., Fuller, G. A., Duarte-Cabral, A., et al. 2013, *A&A*, 555, 112
- Piazzo, L., Calzoletti, L., Faustini, F., et al. 2015, *MNRAS*, 447, 1471
- Van der Tak, F.F.S., Black, J.H., Schöier, F.L., Jansen, D.J., van Dishoeck, E.F. 2007, *A&A*, 468, 627
- Rivera-Ingraham, A., Ristorcelli, I., Juvela, M., et al., 2016, *A&A*, 591, 90
- Rivera-Ingraham, A., Ristorcelli, I., Juvela, M., et al., 2017, *A&A*, 601, 94
- Ostriker J., 1964, *ApJ*, 140, 1056
- Pagani, L., Lefèvre, C., Juvela, M., Pelkonen, V.-M., Schuller, F., 2015, *A&A*, 574, L5
- Planck Collaboration, Ade, P. A. R., Aghanim, N., et al. 2011, *A&A*, 536, 23
- Planck Collaboration, Ade, P. A. R., Aghanim, N., et al. 2011b, *A&A*, 536, 22
- Planck Collaboration, Ade, P. A. R., Aghanim, N., et al. 2016, *A&A*, 594, A28
- Sadavoy, S. I., Di Francesco, J., Johnstone, D., et al. 2013, *ApJ*, 767, 126
- Schmidt, M. 1959, *ApJ*, 129, 243
- Sanhueza, P., Jackson, J. M., Foster, J. B., et al. 2012, *ApJ*, 756, 60
- Sanhueza, P., Jackson, J. M., Foster, J. B., et al. 2013, *ApJ*, 773, 123
- Schneider, N., Csengeri, T., Hennemann, M., et al. 2012, *A&A*, 540, L11
- Schneider, N., Bontemps, S., Girichidis, P., et al. 2015, *MNRAS*, 453, 41
- Shirley, Y. L., 2015, *PASP*, 127, 299
- Stephens, I. W., Jackson, J. M., Whitaker, J. S., et al. 2016, *ApJ*, 824, 29
- Stodólkiewicz, J. S., 1963, *Acta Astron.*, Volume 13, p. 30-54
- Tatematsu, K., Liu, T., Ohashi, S., et al. 2017, *ApJS*, 228, 12
- Vázquez-Semadeni, E. 1994, *ApJ*, 423, 681
- Wang, K., Zhang, Q., Wu, Y., Zhang, H., 2011, *ApJ*, 735, 64
- Wang, K., Zhang, Q., Testi, L., et al. 2014, *MNRAS*, 439, 3275
- Wang, K., Testi, L., Ginsburg, A., Walmsley, C. M., Molinari, S., Schisano, E., 2015, *MNRAS*, 450, 4043
- Wang, K., Testi, L., Burkert, A., et al. 2016, *ApJS*, 226, 9
- Ward-Thompson D., Di Francesco, J., Hatchell, J., et al., 2007, *PASP*, 119, 855
- Wilson, T. L., & Rood, R. 1994, *ARA&A*, 32, 191
- Wu, Y., Liu, T., Meng, F., et al. 2012, *ApJ*, 756, 76
- Wu, J., Evans, N. J., II, Gao, Y., et al. 2005, *ApJ*, 635, L173
- Wu, J., Evans, N. J., II, Shirley, Y. L., et al. 2010, *ApJS*, 188, 313
- Yuan, J., Wu, Y., Liu, T., et al. 2016, *ApJ*, 820, 37
- Yuan, J., Li, J.-Z., Wu, Y., et al. 2017, *ApJ* in press, arXiv:1711.08951
- Zhang, Z.-Y., Gao, Y., Henkel, C., et al. 2014, *ApJL*, 784, L31
- Zhang, Q., Wang, K., Lu, X., et al. 2015, *ApJ*, 804, 141
- Zhang, T., Wu, Y., Liu, T., et al. 2016, *ApJS*, 224, 43