

LJMU Research Online

Longmore, SN, Walsh, AJ, Purcell, CR, Burke, DJ, Henshaw, JD, Walker, DL, Urquhart, J, Barnes, AT, Whiting, M, Burton, MG, Breen, SL, Britton, T, Brooks, KJ, Cunningham, MR, Green, JA, Harvey-Smith, L, Hindson, L, Hoare, MG, Indermuehle, B, Jones, PA, Lo, N, Lowe, V, Moore, TJT, Thompson, MA and Voronkov, MA

H2O Southern Galactic Plane Survey (HOPS): Paper III - Properties of Dense Molecular Gas across the Inner Milky Way

<http://researchonline.ljmu.ac.uk/id/eprint/6264/>

Article

Citation (please note it is advisable to refer to the publisher's version if you intend to cite from this work)

Longmore, SN, Walsh, AJ, Purcell, CR, Burke, DJ, Henshaw, JD, Walker, DL, Urquhart, J, Barnes, AT, Whiting, M, Burton, MG, Breen, SL, Britton, T, Brooks, KJ, Cunningham, MR, Green, JA, Harvey-Smith, L, Hindson, L, Hoare, MG, Indermuehle, B, Jones, PA, Lo, N, Lowe, V, Moore, TJT.

LJMU has developed **LJMU Research Online** for users to access the research output of the University more effectively. Copyright © and Moral Rights for the papers on this site are retained by the individual authors and/or other copyright owners. Users may download and/or print one copy of any article(s) in LJMU Research Online to facilitate their private study or for non-commercial research. You may not engage in further distribution of the material or use it for any profit-making activities or any commercial gain.

The version presented here may differ from the published version or from the version of the record. Please see the repository URL above for details on accessing the published version and note that access may require a subscription.

For more information please contact researchonline@ljmu.ac.uk

H₂O Southern Galactic Plane Survey (HOPS): Paper III – properties of dense molecular gas across the inner Milky Way

S. N. Longmore,^{1,2,3★} A. J. Walsh,⁴ C. R. Purcell,^{5,6} D. J. Burke,³ J. Henshaw,¹
D. Walker,¹ J. Urquhart,⁷ A. T. Barnes,¹ M. Whiting,⁸ M. G. Burton,⁹ S. L. Breen,^{5,8}
T. Britton,^{6,8} K. J. Brooks,^{8,10} M. R. Cunningham,⁹ J. A. Green,⁸ L. Harvey-Smith,⁸
L. Hindson,⁹ M. G. Hoare,¹¹ B. Indermuehle,⁸ P. A. Jones,⁹ N. Lo,^{12,13} V. Lowe,^{7,6,14}
T. J. T. Moore,¹ M. A. Thompson¹² and M. A. Voronkov⁸

¹*Astrophysics Research Institute, Liverpool John Moores University, 146 Brownlow Hill, Liverpool L3 5RF, UK*

²*European Southern Observatory, Karl-Schwarzschild-Str. 2, Garching bei München, Germany*

³*Harvard-Smithsonian Center For Astrophysics, 60 Garden Street, Cambridge, MA 02138, USA*

⁴*ICRAR, Curtin University, Australia*

⁵*IfA, Sydney University, Australia*

⁶*Department of Physics and Astronomy, Macquarie University, NSW 2109, Australia*

⁷*Centre for Astrophysics and Planetary Science, University of Kent, Canterbury CT2 7NH, UK*

⁸*CSIRO Astronomy and Space Science, Australia Telescope National Facility, P.O. Box 76, Epping, NSW 1710, Australia*

⁹*School of Physics, University of New South Wales, Sydney, NSW 2052, Australia*

¹⁰*Murdoch University, 90 South Street, Murdoch, WA 6150, Australia*

¹¹*University of Leeds, UK*

¹²*University of Hertfordshire, UK*

¹³*Universidad de Chile, Santiago, Chile*

¹⁴*CBA, 11 Harbour Street, Sydney, NSW 2000, Australia*

Accepted 2017 May 16. Received 2017 May 12; in original form 2017 March 30

ABSTRACT

The H₂O Southern Galactic Plane Survey (HOPS) has mapped 100 deg² of the Galactic plane for water masers and thermal molecular line emission using the 22 m Mopra telescope. We describe the automated spectral-line fitting pipelines used to determine the properties of emission detected in HOPS data cubes, and use these to derive the physical and kinematic properties of gas in the survey. A combination of the angular resolution, sensitivity, velocity resolution and high critical density of lines targeted make the HOPS data cubes ideally suited to finding precursor clouds to the most massive and dense stellar clusters in the Galaxy. We compile a list of the most massive HOPS ammonia regions and investigate whether any may be young massive cluster progenitor gas clouds. HOPS is also ideally suited to trace the flows of dense gas in the Galactic Centre. We find the kinematic structure of gas within the inner 500 pc of the Galaxy is consistent with recent predictions for the dynamical evolution of gas flows in the centre of the Milky Way. We confirm a recent finding that the dense gas in the inner 100 pc has an oscillatory kinematic structure with characteristic length-scale of 20 pc, and also identify similar oscillatory kinematic structure in the gas at radii larger than 100 pc. Finally, we make all of the above fits and the remaining HOPS data cubes across the 100 deg² of the survey available to the community.

Key words: line: profiles – masers – stars: formation – ISM: evolution – radio lines: ISM.

1 INTRODUCTION

The majority of stars in the Universe form in the highest density regions of giant molecular clouds. Finding and characterizing the

properties of this dense gas as a function of environment is a primary goal for star formation studies and has been the focus of many recent observational surveys (see the review by Molinari et al. 2014).

Among these surveys, the H₂O Southern Galactic Plane Survey (HOPS) is unique. It is the only blind, large-area, spectral-line survey of the Galaxy combining molecular line transitions probing gas with a higher volume density than CO–bright gas, with water

* E-mail: s.n.longmore@ljmu.ac.uk

maser emission – a well-known tracer of star formation activity. The HOPS spectral-line sensitivity of $0.2 \text{ K per } 0.4 \text{ km s}^{-1}$ channel corresponds to 5σ molecular cloud mass completeness limits of 400, 5000 and $3 \times 10^4 M_\odot$ for clouds at distances of 3.2, 8.5 (Galactic Centre distance) and 18 kpc (far side of the Galaxy, Purcell et al. 2012). HOPS is therefore less sensitive to low column density gas or lower mass star formation regions outside the solar neighbourhood than millimetre (mm)-continuum surveys with comparable survey area. However, the $2'$ angular resolution, sensitivity and high critical density of lines targeted make the HOPS data cubes ideally suited to finding gas clouds with radii of several parsecs, masses greater than several thousand M_\odot and average number densities of $\geq 10^3\text{--}4 \text{ cm}^{-3}$ throughout the Galaxy. These are exactly the properties predicted for gas clouds expected to form the most massive and dense stellar clusters in the disc of the Galaxy, and the gas clouds within the inner few hundred parsecs of the Galactic Centre.

The additional kinematic information of the HOPS data confers several additional advantages over continuum-only surveys. As well as making it trivial to identify sources with spuriously high column density due to confusion from multiple physically distinct clouds along the line of sight, it becomes possible to investigate the dynamical structure of the massive and dense gas clouds detected in the survey.

In this paper, we seek to unlock this kinematic dimension and derive the physical and kinematic properties of the HOPS sources. In Section 2, we first describe the automated spectral-line fitting routines that were developed in order to do this, and then apply the pipelines on the HOPS ammonia (NH_3) data cubes. In Section 3, we use the NH_3 (1,1) and NH_3 (2,2) fit results to derive the characteristic dense molecular gas properties for the HOPS dense molecular gas clouds detected in the disc of the Galaxy. We then use these fits to identify a sample of clouds that may be precursors to the next generation of the most massive and dense clusters in the Galaxy. In Section 5, we use the fits to the NH_3 (1,1), (2,2), (3,3) and (6,6) data cubes to investigate the kinematics of dense gas in the inner few hundred parsecs of the Galaxy and compare to recent theoretical predictions. Finally, in the Appendix A, we make the remaining HOPS data cubes available to the community through the HOPS website.

2 SPECTRAL-LINE FITTING OF HOPS DATA CUBES

HOPS is a survey with the Mopra radio telescope designed to simultaneously map spectral-line emission along the Southern Galactic plane across the 12 mm band (frequencies of 18.5–27.5 GHz). HOPS has mapped 100 deg^2 of the Galactic plane, from $l = 290^\circ$ to 30° and $|b| \leq 0.5$ (Walsh et al. 2008), aiming to provide an untargated census of 22.235 GHz H_2O ($6_{16} - 5_{23}$) masers and thermal line emission towards the inner Galaxy.

The survey properties, observing parameters, data reduction and H_2O maser catalogue are described in Walsh et al. (2011, hereafter Paper I). The general methodology used to find spectral-line emission in HOPS data cubes and its specific application to ammonia [NH_3] (J,K) = (1,1) and (2,2) data are described in Purcell et al. (2012, hereafter Paper II). The accurate water maser positions are published in Walsh et al. (2014). Below we describe the automated spectral-line fitting routines and apply them to the NH_3 (1,1) and NH_3 (2,2) data cubes.

With a large survey area (100 deg^2) and a wide (8 GHz) bandwidth including many bright transitions, HOPS detected a large number of spectral-line emission regions. The properties of the

emission varies widely, containing transitions with resolved hyperfine structure, line widths ranging from marginally resolved ($< 1 \text{ km s}^{-1}$) to several tens of km s^{-1} (e.g. pressure-broadened radio recombination lines and molecular lines towards the Galactic Centre) and regions with emission from multiple velocity components. To handle these data, an automated emission finding pipeline and spectral-line fitting pipeline were developed. The emission finding pipeline, described in Paper II, searched the full data set, identified regions with emission and extracted sub-cubes that encompass the spatial and velocity extent of the emission, taking into account hyperfine structure where applicable. The output from the emission finding pipeline was then fed into the spectral-line fitting pipeline.

The NH_3 (1,1) and NH_3 (2,2) transitions were chosen to test the automated fitting pipeline for several reasons. First, a large number of sources were detected in both transitions with a large range in brightness temperature and line width. This allowed the robustness of the fitting routines to be tested over a wide range of parameter space. Secondly, the NH_3 (1,1) hyperfine structure is easily-detectable and the main/inner satellites can be spectrally resolved for sources with narrow line widths (i.e. less than a few km s^{-1}). At the same time, the main/inner satellites are sufficiently close in frequency that they overlap in velocity for sources with large line width ($> 5 \text{ km s}^{-1}$). These properties make NH_3 (1,1) emission ideal to test how the pipeline deals with simultaneously fitting multiple lines and line-blending. Conversely, the NH_3 (2,2) satellite lines are much weaker and offset in velocity from the main line making a single Gaussian component fit a good approximation. Thirdly, the emission from the NH_3 (1,1) and (2,2) transitions is expected to come from very similar gas, so the line-centre velocity (V_{LSR}) and line width (ΔV) from the same source should be similar for the two transitions, allowing further checks on the robustness of the fitting results. Finally, these lines are well known as robust probes of the physical conditions (especially the temperature) in dense molecular gas (e.g. Ho & Townes 1983). In this way, at the same time as testing the automated spectral-line fitting routines, we can identify and determine the broad physical properties of regions in the Galaxy where the earliest stages of high-mass star formation are taking place.

The first step in the automated fitting process was to remove sources flagged in Paper II as potentially spurious. These included artefacts at the extreme ends of the spectral bandpass caused by the baseline fitting (flag labels ‘vpF’ and ‘vmF’ in Paper II) and those identified by eye as spurious (flag label ‘artefactF’ in Paper II). For the purposes of testing the spectral-line fitting pipelines, we also removed sources identified with more than one velocity component along the line of sight (flag label ‘multiF’ in Paper II). This left 653 emission regions.

A large number of these regions exhibit asymmetric intensity profiles in the NH_3 (1,1) hyperfine structure. For these sources, the usual assumption of equal excitation temperature for all the hyperfine levels does not hold, potentially leading to errors in the derived optical depth and other gas properties (e.g. temperature and column density). To ensure this did not affect the fit results, two versions of the pipeline were written: one making the standard ‘equal excitation’ assumption (Section 2.2), and the other where the intensity of the NH_3 (1,1) outer/inner satellite lines were left as free parameters (Section 2.1). To further check the fitting robustness over the large range in expected line profile shapes, signal-to-noise (S/N) etc., the two versions of the pipeline were written using independent software packages. The two versions of the pipeline are described in detail below.

2.1 Spectral-line fitting of NH₃ (1,1) and (2,2) emission with SHERPA

The first of the spectral-line fitting pipelines is based on SHERPA¹ routines. The input to the spectral-fitting pipeline are the emission sub-cubes from the source-finding pipeline described in Paper II. This source-finding pipeline also provides masks identifying which pixels in the sub-cubes contain real emission. The spectral-line fitting pipeline then fits Gaussian profiles (with multiple components for transitions with hyperfine structure) to the velocity axis of each of these pixels, determines the robustness of each fit, and, for regions with at least one good fit, derives characteristic gas properties for the pixel with peak emission. For regions with enough good-fit pixels (see Section 3), the pipeline produces maps of the fit results.

This version of the fitting pipeline does not assume equal excitation temperatures for the NH₃ (1,1) hyperfine components. Instead, the NH₃ (1,1) emission was fit with five Gaussian components – one for each of the $F_1 = 1 \rightarrow 0$ and $F_1 = 0 \rightarrow 1$ outer satellite components, $F_1 = 1 \rightarrow 2$ and $F_1 = 2 \rightarrow 1$ inner satellite components and the $F_1 \rightarrow F_1$ main component. In the fitting process, these were all fixed to have the same line width, with velocity separations given by their predicted frequency offsets (Rydbeck et al. 1977). χ^2 minimization was used to find the best fit to the following free parameters: (1) the V_{LSR} of the $F_1 \rightarrow F_1$ main-line component, (2) a single line width for the five Gaussian components and (3) the intensity of each of the five Gaussian components. The NH₃ (2,2) emission was fit in a similar way to the NH₃ (1,1) emission but only using a single Gaussian component as the NH₃ (2,2) outer/inner satellite lines are much weaker and typically not detected. In all cases, the initial guess for the V_{LSR} was taken from the velocity of peak NH₃ (1,1) emission identified by the source-finding algorithm in Paper II. If the fit converged, it returned the best-fitting peak intensity (T_{peak}) for each Gaussian component, the line width (ΔV), emission velocity (V_{LSR}) and the residuals (the rms variation in the spectra with the best-fitting Gaussian component(s) subtracted).

Several quality control steps were then implemented. First, a non-detection was defined where one or more of the following was true: (i) the fit did not converge, (ii) $T_{\text{peak}} < 5\sigma$, where σ was calculated as the rms in the residuals of those pixels which could be robustly fit, (iii) $\Delta V < 0.05 \text{ km s}^{-1}$ (i.e. line widths smaller than the channel width) and (iv) $\Delta V > 10 \text{ km s}^{-1}$. Criteria (iv) was important for discarding spurious fits across most of the survey area and highlighting sources for which the NH₃ (1,1) satellite and main components can no longer be spectrally resolved (limiting the ability to derive robust opacities). This also had the effect of flagging emission from clouds close to the Galactic Centre where the line width is generally $> 10 \text{ km s}^{-1}$. However, the complicated velocity structure and extreme gas excitation conditions mean a full analysis of this emission is beyond the scope of this pipeline. These data are discussed in Section 2.3, and have been analysed in more detail elsewhere (Longmore et al. 2013).

Spatial pixels which passed criteria (i)–(iv) were defined to have reliable fits. For regions with at least one NH₃ (1,1) detection, the ‘peak pixel’ was defined as that with the highest NH₃ (1,1) main component brightness temperature. Following further quality control steps outlined below, the fits to the NH₃ emission at this peak pixel were used to determine characteristic gas properties of the region.

Gas properties were derived for each pixel depending on the reliability of the NH₃ (1,1) and (2,2) detections. For pixels with reliable NH₃ (1,1) fits, the NH₃ (1,1) main-line optical depth, τ_m^{11} , was derived from the ratio of the main and satellite component peak brightness temperatures (see e.g. Ho & Townes 1983). To mitigate uncertainties in the optical depth caused by hyperfine-structure intensity anomalies, an average of the outer/inner satellite line intensities was used to determine the intensity ratio of these components to the main line. With an optical depth for the transition, the NH₃ (1,1) excitation temperature, T_{ex}^{11} , was then derived through the detection equation, assuming a background temperature of 2.73 K and a beam-filling factor of 1. For pixels which also had reliable NH₃ (2,2) fits, the gas rotational temperature (T_{rot}) and total NH₃ column density ($N_{\text{NH}_3}^{\text{TOT}}$) were derived following Ungerechts, Winnewisser & Walmsley (1986). The gas kinetic temperature, T_{kin} , was calculated from T_{rot} following Tafalla et al. (2004) who used the collisional rates of NH₃ with H₂ determined by Danby et al. (1988). Finally, the non-thermal contribution to the NH₃ (1,1) line width, $\Delta V_{\text{NT}}^{11}$, was calculated by subtracting the thermal contribution, $\Delta V_{\text{TH}}^{11}$ (determined from T_{kin}), in quadrature from the measured NH₃ (1,1) line width, ΔV^{11} .

2.2 Spectral-line fitting of NH₃ (1,1) and (2,2) emission with CLASS

CLASS² was used as a second, independent method of fitting the spectral-line data. For each region identified as containing emission, the source-finding pipeline output a spectrum at the pixel of peak emission. These peak spectra were then read into CLASS and a zeroth-order baseline was subtracted from line-free channels. The line-free channels were selected as those offset from the velocity of peak emission, $V_{\text{LSR}}^{\text{peak}}$, by more than $V_{\text{LSR}}^{\text{peak}} \pm 25 \text{ km s}^{-1}$. The NH₃ (1,1) and (2,2) baseline-subtracted spectra were then fit with the ‘nh3(1,1)’ (assuming equal excitation for the hyperfine components) and ‘gauss’ methods within CLASS, respectively. Gas properties were derived in the same way as for the SHERPA routine.

2.3 Spectral-line fitting of NH₃ emission in the Galactic Centre

As mentioned above, the NH₃ emission from the inner Galaxy ($|l| \lesssim 5^\circ$ – corresponding to the inner few hundred parsecs from the Galactic Centre), is very different in nature from the NH₃ emission throughout the rest of the disc due to the very different physical conditions there (Kruijssen & Longmore 2013). The line widths are an order of magnitude larger and the velocity structure is complex, with multiple components along many lines of sight and a velocity gradient of around 200 km s^{-1} within $|l| \lesssim 2^\circ$. The fitting pipelines developed in Sections 2.2 and 2.1 are not intended to work with such complicated data cubes.

Instead, we used the Semi-automated multi-COMPonent Universal Spectral-line fitting Engine (SCOUSE) of Henshaw et al. (2016). SCOUSE is a line-fitting algorithm designed to analyse large volumes of spectral-line data in an efficient and systematic way. It finds a balance between user-interaction and efficiency by: (i) systematically excluding regions of low significance from the analysis; (ii) breaking up the input map into smaller regions, and requiring the user to fit *only* the spectra that have been spatially averaged over these regions; (iii) using the user-provided values (such as the number

¹ Part of the CIAO 4.1 package (Freeman, Doe & Siemiginowska 2001; Refsdal et al. 2007): <http://cxc.harvard.edu/sherpa/>

² CLASS is part of the GILDAS data reduction package: <http://www.iram.fr/IRAMFR/GILDAS/>

Table 1. SCOUSE: global statistics. The input parameters provided to SCOUSE for the fitting of each transition were identical to those used by Henshaw et al. (2016).

Statistic	NH_3 (1,1)	NH_3 (2,2)	NH_3 (3,3)	NH_3 (6,6)
N_{tot}	95 159	95 159	95 159	95 159
$N_{\text{tot,SAA}}$	23 742	18 444	16 740	2700
N_{SAA}	430	322	296	34
N_{fit}	13 621	9887	13 163	1494
N_{comp}	16373	11 649	18 516	1584
$N_{\text{comp}}/N_{\text{fit}}$	1.2	1.2	1.7	1.2
$\sigma_{\text{resid}}/\sigma_{\text{rms}}$	1.1	1.1	1.2	1.1

N_{tot} : total number of positions in the mapped area.

$N_{\text{tot,SAA}}$: total number of positions included in the coverage.

N_{SAA} : total number of spectral averaging areas.

N_{fit} : total number of positions fitted using the SCOUSE routine.

N_{comp} : total number of components fitted using the SCOUSE routine.

$N_{\text{comp}}/N_{\text{fit}}$: fractional number of Gaussian components per position.

$\sigma_{\text{resid}}/\sigma_{\text{rms}}$: mean $\sigma_{\text{resid}}/\sigma_{\text{rms}}$.

of spectral components and parameter estimates) as *non-restrictive guides* in the fitting process. Provided therefore, that the line profile of a spatially averaged spectrum is an adequate representation of its composite spectra, SCOUSE provides an efficient and systematic approach to fitting large quantities of spectral-line data.

We provide SCOUSE with the same input parameters as in Henshaw et al. (2016), since these have already been (empirically) optimized for emission from gas within the inner few hundred parsecs of the Galactic Centre (the Central Molecular Zone, CMZ). We refer the reader to that paper for full details of the fitting process, but provide the values of key input parameters used to fit the Galactic Centre data in Table 1. At present, SCOUSE fits all spectra with (multiple) independent Gaussian components, so does not explicitly attempt to fit the NH_3 hyperfine structure. However, at the size scales probed by the resolution of the HOPS observations, the velocity dispersion of the Galactic Centre gas is comparable to, or greater than, the velocity separation of the hyperfine components for the low $\text{NH}_3(J,K)$ transitions (Townes & Schawlow 1955; Ho & Townes 1983; Shetty et al. 2012). We therefore expect the satellite lines to be blended with the main component for these low $\text{NH}_3(J,K)$ transitions. In the unexpected case that the intrinsic velocity dispersion is low enough to resolve the hyperfine components, the known offset and relative intensity of the main, inner and outer satellite components (Townes & Schawlow 1955; Ho & Townes 1983) would make the hyperfine-structure trivial to spot. We note that in the case of moderate to high opacity in the low $\text{NH}_3(J,K)$ transitions, the brightness temperature of the satellite lines can become comparable to the main line, leading to opacity-broadening when fitting the emission with a single Gaussian component. In this case, without being able to resolve the hyperfine structure, it is not possible to determine the extent of this effect. For that reason, the measured velocity dispersion of the low $\text{NH}_3(J,K)$ transitions will only represent an upper limit to the intrinsic velocity dispersion. The expected intensity of the inner and outer satellite hyperfine components drops exponentially with increasing $\text{NH}_3(J,K)$ transition so we do not expect to detect the satellite lines for the high $\text{NH}_3(J,K)$ transitions, and the above problems should not be an issue.

Visual inspection of the output shows SCOUSE generally does a good job of robustly fitting the complex spectral profiles of the NH_3 (1,1), (2,2), (3,3) and (6,6) emission across the full inner 5° longitude range and that hyperfine structure does not result in the ‘detection’ of spurious additional velocity components. The only

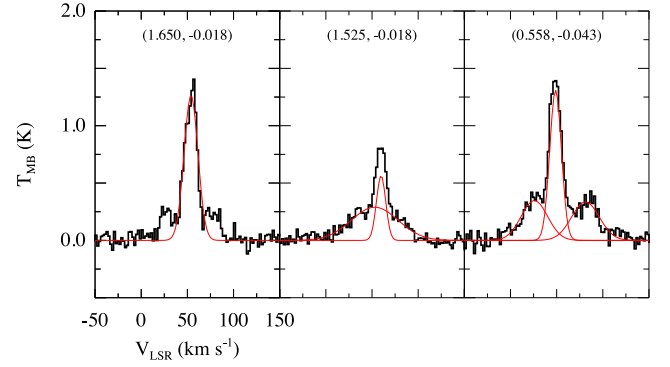


Figure 1. Example NH_3 (3,3) spectra that proved difficult for SCOUSE to fit. The coordinates in parentheses given the position in Galactic longitude and latitude.

exception to this are that some of the NH_3 (3,3) spectra showed unusual profiles which proved difficult to fit. Fig. 1 shows examples of such spectra. The common feature linking these problematic spectra is a bright, narrow velocity component superimposed on the broader, weaker velocity components which are more typical of gas in the Galactic Centre. The left-hand panel of Fig. 1 shows one example where the bright, narrow component lies at a velocity half way in between two velocity components with similar, lower peak brightness temperatures. Such a profile is qualitatively characteristic of the NH_3 hyperfine structure. However, the relative intensity and velocity separation of the lines does not match that predicted quantum mechanically (Townes & Schawlow 1955).

The middle and right-hand panels of Fig. 1 show two more examples of typical NH_3 (3,3) spectra that proved difficult to fit, in which the bright, narrow component either lay on top of another broader component, or at some intermediate velocity in between two (or more) components with different brightness temperatures. Given that NH_3 (3,3) is well known as a maser transition in regions with conditions similar to that characteristic of gas in the Galactic Centre, and many maser species appear widespread throughout the region, we conclude that the most likely explanation for the narrow spectral NH_3 (3,3) component is maser emission. As we are interested primarily in the variation in kinematic properties of the thermal gas component, we flag regions containing maser-like spectra and ignore them in the subsequent discussions.

In Section 5, we describe the output of the fitting and discuss the implications of this for the dense gas kinematics in the Galactic Centre. The fit results themselves are available through the HOPS website (<http://www.hops.org.au>).

3 PEAK-SPECTRA FIT RESULTS

The results of peak-spectra fitting are listed in Table 2. Columns 1 and 2 give the Galactic longitude and latitude of the region taken from the source name in Paper II. Columns 3–11 list the best-fitting NH_3 (1,1) and NH_3 (2,2) parameters at the peak pixel towards each region. For each transition, T_B is the peak brightness temperature of the main component, V_{LSR} is the line-centre velocity and ΔV is the line width. Columns 6 and 7 show the opacity and excitation temperature of the NH_3 (1,1) transition. The subscript ‘m’ denotes the main hyperfine component. Column 8 shows the NH_3 (2,2) integrated intensity. A dash denotes no reliable fit was obtained for that parameter.

For Table 2, we adopted an inclusive approach, where all potential detections are included. While the automated fitting algorithm is

Table 2. Example output from the automated spectral-line fitting procedure described in Section 2. Columns 1 and 2 give the Galactic longitude and latitude of the region taken from the source name in Paper II. Columns 3–11 list the best-fitting NH₃ (1,1) and NH₃ (2,2) parameters at the peak pixel towards each region. For each transition, T_B is the peak brightness temperature of the main component, V_{LSR} is the line-centre velocity and ΔV is the line width. Columns 6 and 7 show the opacity and excitation temperature of the NH₃ (1,1) transition. The subscript ‘m’ denotes the main hyperfine component. Column 8 shows the NH₃ (2,2) integrated intensity. A dash denotes no reliable fit was obtained for that parameter. Only the first five sources are shown. The full catalogue is available in Table B1.

l (°)	b (°)	$T_{B,m}^{11}$ (K)	V_{LSR}^{11} (km s ⁻¹)	ΔV^{11} (km s ⁻¹)	τ_m^{11}	T_{ex}^{11} (K)	$\int T_B^{22} dV$ (K km s ⁻¹)	V_{LSR}^{22} (km s ⁻¹)	ΔV^{22} (km s ⁻¹)	T_B^{22} (K)
0.223	-0.473	2.87 ± 0.39	16.90 ± 0.07	1.96 ± 0.15	1.65 ± 0.49	4.46	0.65 ± 0.20	16.71 ± 0.17	1.08 ± 0.40	0.57
0.238	-0.189	0.74 ± 0.61	76.60 ± 1.55	6.75 ± 3.78	3.37 ± 3.81	2.94	2.05 ± 0.45	79.13 ± 0.75	6.34 ± 1.39	0.30
0.507	-0.321	0.31 ± 0.07	-64.00 ± 0.85	6.69 ± 1.40	0.10 ± 2.74	5.83	2.47 ± 0.69	-64.48 ± 3.40	24.64 ± 7.92	0.09
0.658	-0.213	0.51 ± 0.37	-50.00 ± 0.67	2.60 ± 1.28	1.27 ± 3.13	3.13	0.44 ± 0.16	-59.87 ± 0.22	1.20 ± 0.47	0.35
0.860	-0.067	11.30 ± 1.13	12.80 ± 0.26	15.00 ± 0.90	1.92 ± 0.25	8.61	126.40 ± 2.11	12.67 ± 0.25	31.51 ± 0.64	3.77

Table 3. Example derived gas properties for sources with robust NH₃ (1,1) and NH₃ (2,2) detections (see Section 3). The rotational temperature, total NH₃ column density, kinetic temperature and the non-thermal and thermal contributions to the line width are listed in columns 3 to 7, respectively, for the peak NH₃ (1,1) pixel. Only the first 5 sources are shown. The full table is given in Table B2.

l (°)	b (°)	T_{rot} (K)	$N_{\text{NH}_3}^{\text{tot}}$ (10 ¹⁴ cm ⁻²)	T_{kin} (K)	ΔV_{nt} (km s ⁻¹)	ΔV_{th} (km s ⁻¹)
29.939	-0.031	19	1.69	22	3.13	0.24
27.774	0.068	21	0.69	26	2.37	0.26
27.278	0.152	42	0.45	93	2.32	0.50
24.785	0.095	17	2.22	20	3.58	0.23
24.475	0.478	34	0.33	59	3.04	0.39

designed to remove obviously spurious fits, distinguishing between fits to genuine low S/N detections and fits to noise involves further work. In other words, Table 2 is optimal in terms of completeness, but a small number of the low S/N detections may not be real. To remove such false detections, we used a two-step approach. First, we compared the fit results from the two pipelines and the properties of the NH₃ (1,1) and NH₃ (2,2) detections, and used these to define appropriate ‘robustness’ criteria. Then, we checked the ‘robust’ spectra by eye to confirm the criteria were producing sensible results.

The required robustness of the fits depends on the specific science goals. For our purposes below (Section 4), we wanted to isolate the most robust detections, so defined a set of ‘highly reliable’ NH₃ (1,1) detections as those with: (i) a S/N in both the SHERPA and CLASS pipelines of >5; (ii) the SHERPA and CLASS V_{LSR} agree to within 3 km s⁻¹; (iii) the SHERPA and CLASS ΔV agree to within 50 per cent. 81 of the NH₃ (1,1) detections pass these criteria. Using similar criteria for the NH₃ (2,2) detections, which were a subset of the reliable NH₃ (1,1) reliable detections, we identify 64 sources with highly reliable NH₃ (2,2) detections.

Table 3 shows the derived gas properties for sources with robust NH₃ (1,1) and NH₃ (2,2) detections. The rotational temperature, total NH₃ column density, kinetic temperature and the non-thermal and thermal contributions to the line width are listed in columns 3–7, respectively, for the peak NH₃ (1,1) pixel.

Maps of the fit parameters and derived gas properties were made for those regions with at least 30 pixels (i.e. >1.5 times the 2’ beam area) with reliable NH₃ (1,1) fits. An example of these maps is shown in Fig. 2. The top left and top right panels show NH₃ (1,1) and NH₃ (2,2) peak pixel spectra. If a reliable fit was obtained, the residual (the best-fitting profiles subtracted from the data) is shown below the observed spectra for that transition, separated by

a horizontal dotted line. For regions with a reliable NH₃ (1,1) fit, the NH₃ (1,1) V_{LSR} is shown as a dashed vertical line. For regions where no reliable fits were returned, only the observed spectra at the position of peak emission are shown. The left-hand panel of the second row shows the NH₃ (1,1) brightness temperature overlayed with contours in 10 per cent steps of the peak value, from 90 per cent down. The right-hand panel of the second row and left-hand panel of the third row show the velocity dispersion and V_{LSR} of the NH₃ (1,1), respectively, determined from the fit. The contours for these two plots show the NH₃ (1,1) brightness temperature. For those regions which also have at least 30 pixels with reliable NH₃ (2,2) fits (for example the region in Fig. 2), the right-hand panel on the third row shows the NH₃ (2,2) brightness temperature overlayed with contours in 10 per cent steps of the peak value, from 90 per cent down. The bottom left and right panels show the kinetic temperature and total NH₃ column density maps, respectively. The contours for these two plots show the NH₃ (2,2) brightness temperature. Similar plots for all regions with at least 30 pixels with reliable NH₃ (1,1) fits are available in an online appendix. Plots of NH₃ (1,1) and NH₃ (2,2) peak pixel spectra (similar to those in the top row of Fig. 2) are available for all sources in an online appendix.

In Section 4, we use these catalogues to try and determine the relative ages of the NH₃ sources identified in HOPS.

4 CHARACTERIZING THE PROPERTIES OF HOPS NH₃ SOURCES IN THE DISC

NH₃ observations have played an important role in deriving the physical properties of gas in high-mass star formation regions and, in combination with other diagnostics, trying to define a self-consistent observational evolutionary sequence to order regions by their relative ages (e.g. Pillai et al. 2006; Longmore et al. 2007; Hill et al. 2010; Ragan, Bergin & Wilner 2011; Dunham et al. 2011; Urquhart et al. 2011; Wienen et al. 2012; Battersby et al. 2014; Urquhart et al. 2015).

Previous work has used the diagnostic power of NH₃ to determine the gas properties of young high-mass star formation regions that have been selected through various methods, for example infrared-dark clouds (IRDCs: Pillai et al. 2006; Ragan et al. 2011; Battersby et al. 2014), mid-IR bright young stellar objects (Urquhart et al. 2011, 2015) and (sub)mm continuum emission (Dunham et al. 2011; Wienen et al. 2012). These selection criteria are complementary. IRDCs identify regions at early evolutionary stages but require a bright mid-IR background, so preferentially pick out nearby objects. Mid-IR bright regions can be detected across the Galaxy but are more evolved. Longer wavelength (sub)mm continuum data identify both of these evolutionary stages with good completeness, but also

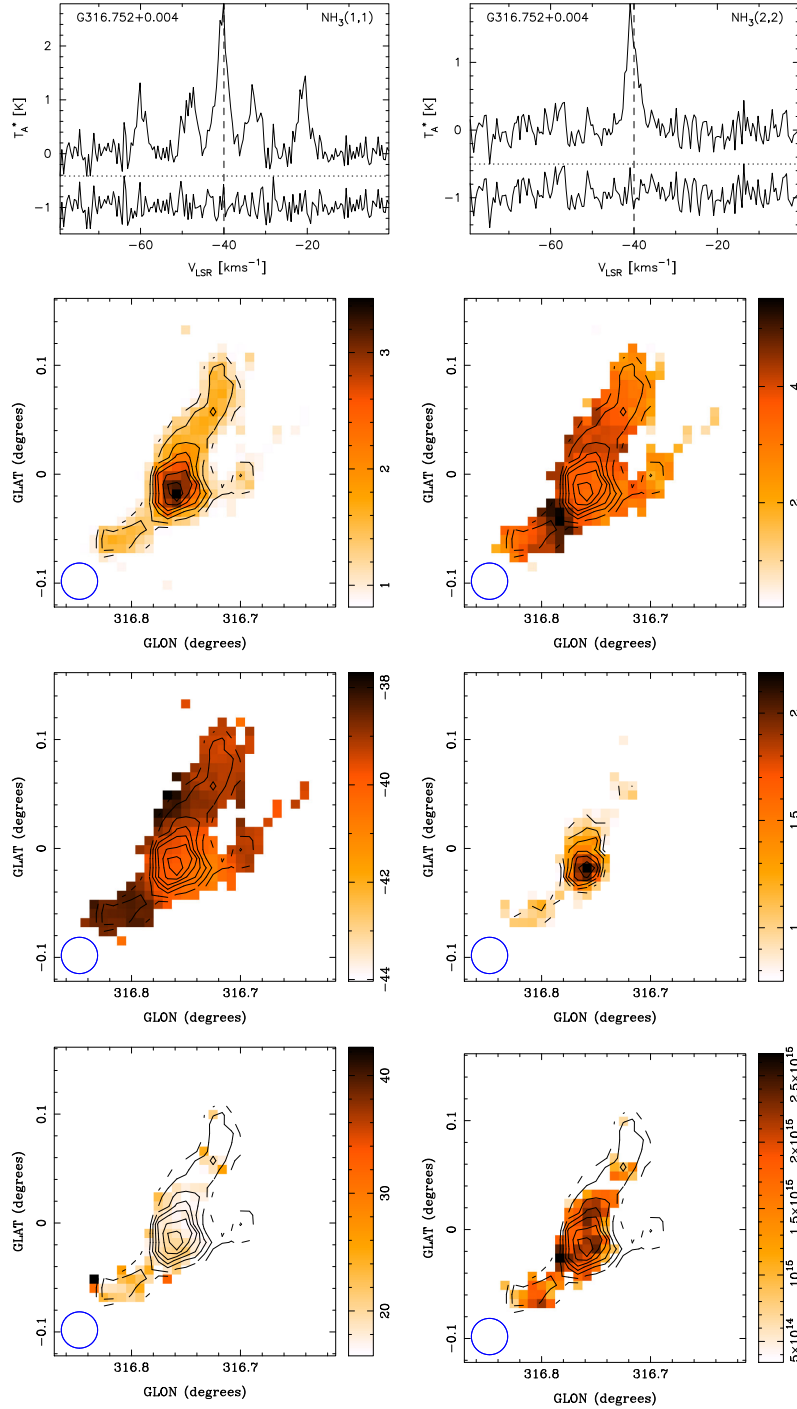


Figure 2. Spatially resolved gas properties output from the automated spectral-line fitting routine, for example source G316.752 + 0.004 – 38.2 (see [Paper II](#) for the naming definition). NH_3 (1,1) [top left] and NH_3 (2,2) [top right] spectra from the pixel with peak NH_3 (1,1) emission, with residuals from the fit displayed underneath. The vertical dashed lines show the NH_3 (1,1) V_{LSR} . The left-hand panel of the second row shows the brightness temperature (in K) of the NH_3 (1,1) emission overlaid with contours in 10 per cent steps of the peak value, from 90 per cent down. The right-hand panel of the second row and left-hand panel of the third row show the velocity dispersion and V_{LSR} (in km s^{-1}) of the NH_3 (1,1) emission determined from the fit to each pixel. The contours for these two plots show the same NH_3 (1,1) brightness temperature contours as the left-hand panel of the second row. The right panel on the third row shows the brightness temperature (in K) of NH_3 (2,2) emission overlaid with contours in 10 per cent steps of the peak value, from 90 per cent down. The bottom left and right panels show the kinetic temperature (in K) and total NH_3 column density (in cm^{-2}) maps, respectively. The contours for these two plots show the same NH_3 (2,2) brightness temperature contours as the right-hand panel of the third row. The primary beam is shown in the bottom left corner of each image.

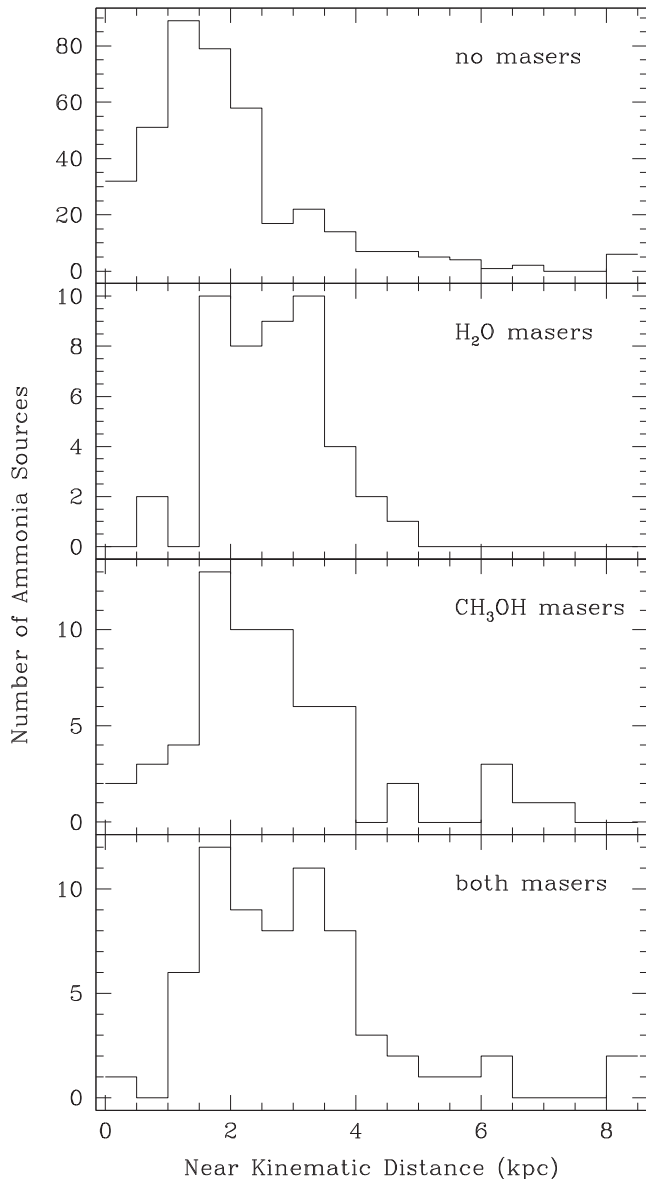


Figure 3. Distributions of distances for NH_3 sources with no known maser association (top), associations with just water masers (next panel down), associations with just methanol masers (next panel down) and associations with both types of masers (bottom panel).

select lower mass regions which are unlikely to form high-mass stars.

As a large-area, blind, molecular line survey, HOPS allows us to take a different approach, by starting with an NH_3 -selected sample. HOPS is a relatively shallow survey, so this approach has disadvantages compared to the previous identification methods outlined above. For example, the survey is incomplete for lower mass and lower density molecular clouds. However, NH_3 has an effective critical density of several $\sim 10^3 \text{ cm}^{-3}$ (Evans 1999), so traces dense molecular gas, and is found in regions cold enough that more common gas tracers, like CO, tend to deplete by freeze out on to dust grains (Bergin et al. 2006). Also, spectral-line observations automatically provide the underlying kinematic gas structure, which is crucial for determining the nature of continuum sources (e.g. whether bright sources are in fact multiple regions superimposed along the line of sight). As shown in Paper II, HOPS is therefore

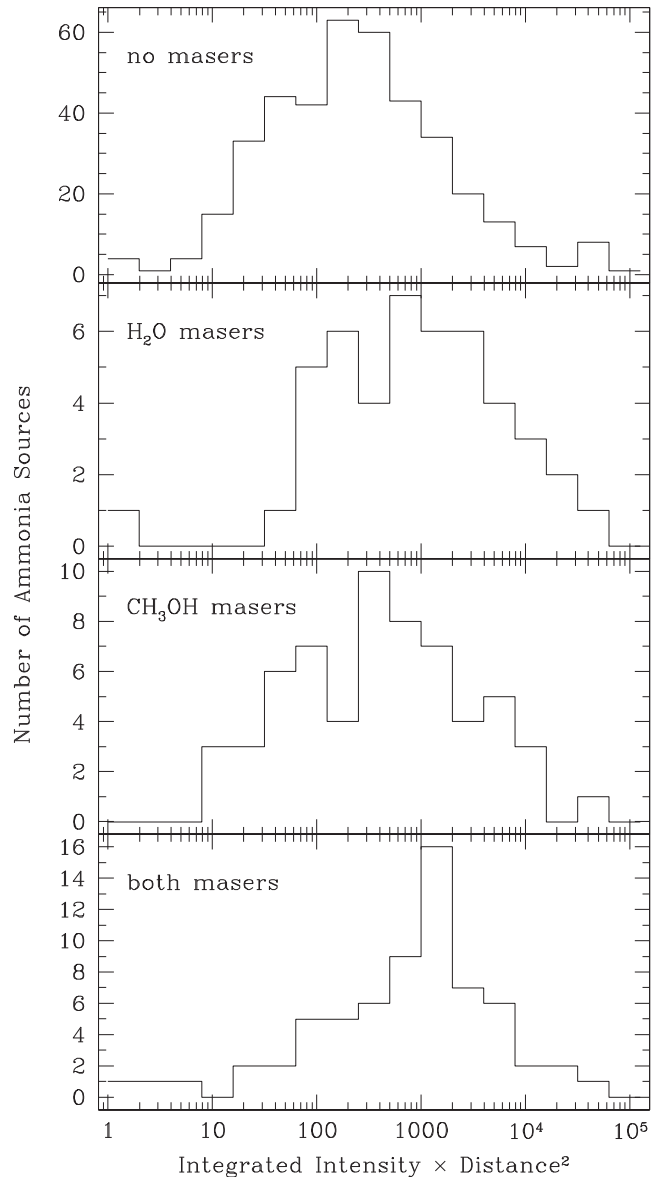


Figure 4. Distributions of integrated intensity, multiplied by the square of the distance for all NH_3 sources (in units of $\text{K km s}^{-1} \text{ kpc}^2$). This quantity is a crude estimation for the relative clump masses. The distributions are shown for NH_3 clumps with no known maser association (top), associations with just water masers (next panel down), associations with just methanol masers (next panel down) and associations with both types of masers (bottom panel).

an ideal survey to identify the most massive and dense molecular clouds in the Galaxy. These are particularly interesting as potential precursors to the most massive and dense stellar clusters, dubbed ‘young massive clusters’ (YMCs; Longmore et al. 2012, 2014). We discuss potential YMC precursor clouds in Section 4.1.

Before doing this, our first goal is to understand the range of evolutionary stages covered by the HOPS NH_3 sources. For this purpose, we chose 22 GHz water maser (Walsh et al. 2014) and 6.7 GHz methanol maser (Caswell et al. 2010, 2011; Green et al. 2010, 2012; Breen et al. 2015) emission as diagnostics of embedded star formation activity within gas clouds. We then divided the HOPS NH_3 detected regions into different groups depending on whether or not the sources contained maser emission within the primary

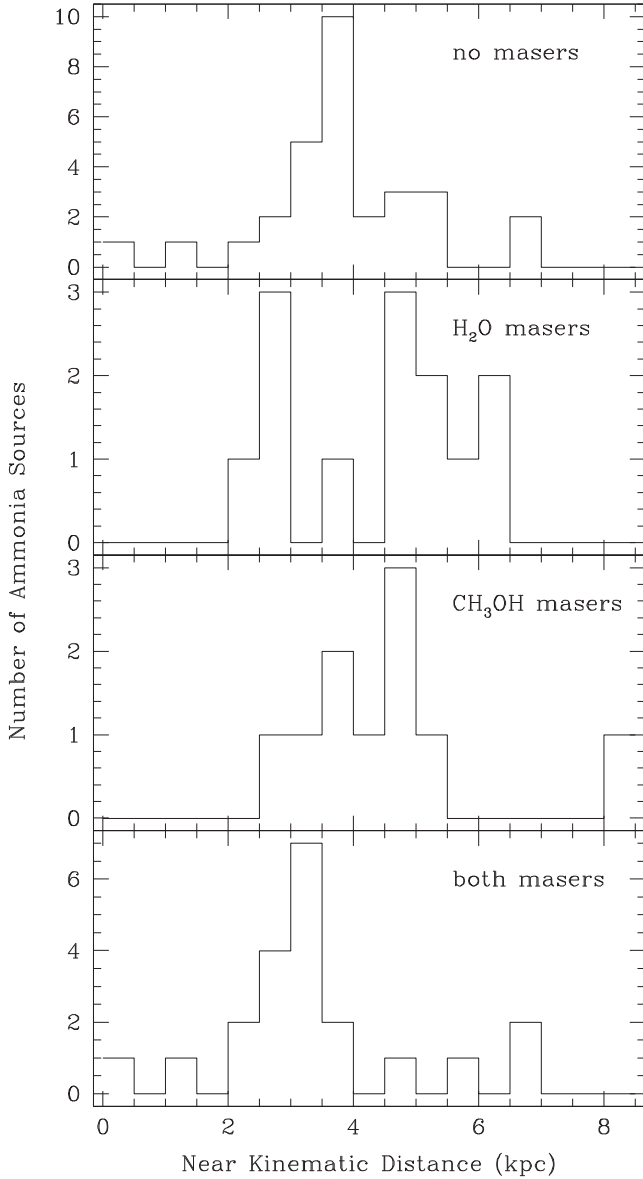


Figure 5. Distributions of distances for ‘highly reliable’ NH_3 sources with no known maser association (top), associations with just water masers (next panel down), associations with just methanol masers (next panel down) and associations with both types of masers (bottom panel). There are no systematic differences between the four groups.

beam ($2''$). We defined the following four groups: (i) NH_3 sources that are not associated with any known 22 GHz water or 6.7 GHz methanol maser; (ii) those that are associated with just 22 GHz water maser emission; (iii) those associated with just 6.7 GHz methanol maser emission and (iv) those associated with both types of maser.

Of the 687 HOPS NH_3 sources, there are 490, 54, 70 and 73 in groups (i)–(iv), respectively. The vast majority of HOPS NH_3 sources have no associated maser emission down to the sensitivity limits of the HOPS and methanol multibeam surveys. Taken at face value, the dominance of group (i) sources suggests that HOPS preferentially selects young regions which do not have prodigious embedded star formation activity. However, it may be the case that there are lower mass star formation regions in the sample. These would not be expected to have 6.7 GHz methanol maser

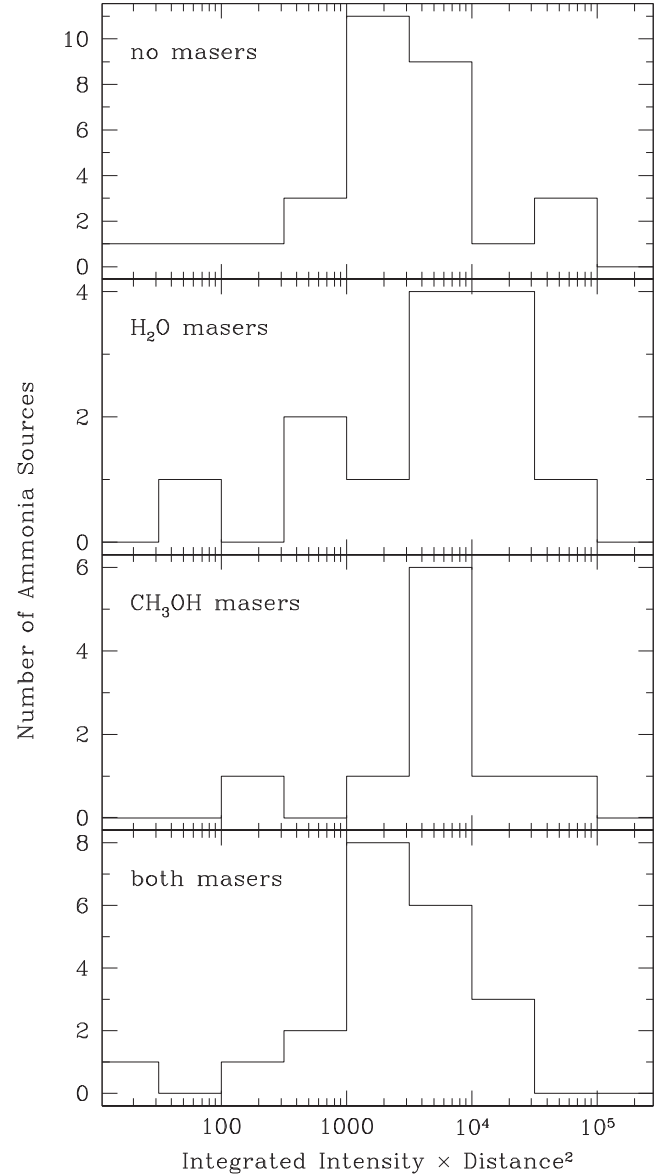


Figure 6. Distributions of integrated intensity, multiplied by the square of the distance for ‘highly reliable’ NH_3 sources (in units of $\text{K km s}^{-1} \text{ kpc}^2$). This quantity is a crude estimation for the relative clump masses. The distributions are shown for NH_3 clumps with no known maser association (top), associations with just water masers (next panel down), associations with just methanol masers (next panel down) and associations with both types of masers (bottom panel). There are no systematic differences between the four groups.

emission (Minier et al. 2003; Breen et al. 2013). Also, with a 5σ sensitivity of ~ 1 Jy, HOPS is a comparatively shallow 22 GHz water maser survey. So while it has the advantage of being complete, weaker water masers will have been missed. Therefore, the NH_3 -only group may contain a number of clouds with active low-mass star formation.

Previous studies have found such biases when comparing regions with different selection criteria. For example, Hill et al. (2010) found that, in their sample, millimetre continuum sources without other signs of star formation (including methanol masers and radio continuum emission) tended to have smaller sizes, masses and velocity dispersions. This was interpreted as either evidence for these sources

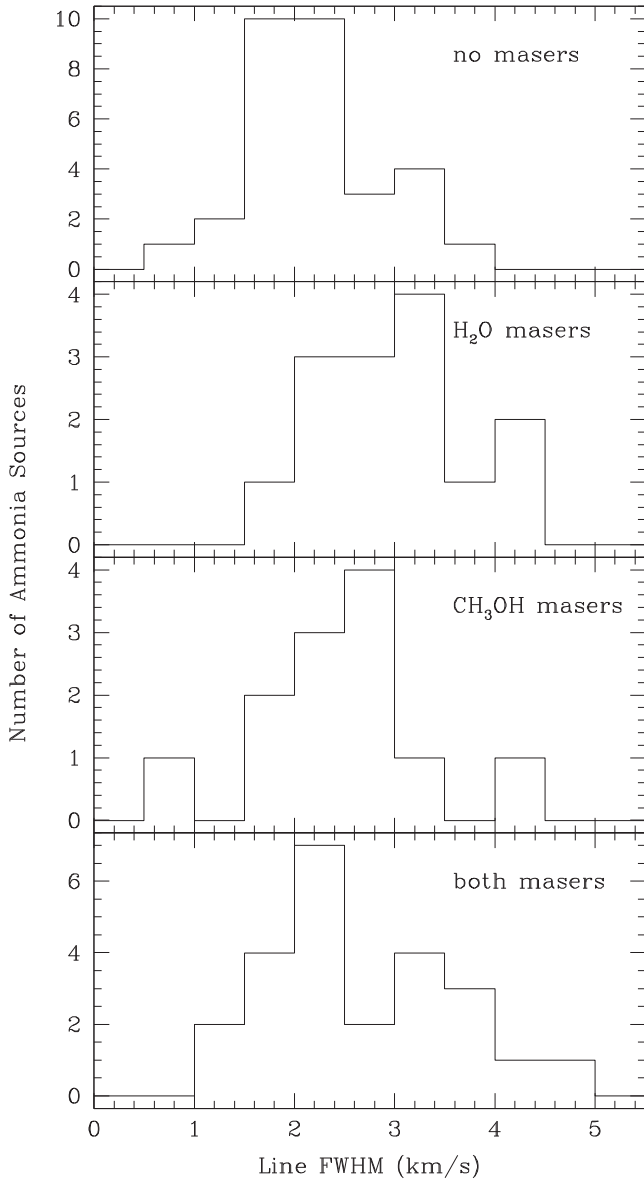


Figure 7. Distributions of spectral-line FWHM for NH_3 sources. The distributions are shown for NH_3 clumps with no known maser association (top), associations with just water masers (next panel down), associations with just methanol masers (next panel down) and associations with both types of masers (bottom panel). The top distribution shows typically narrower line widths.

to be at an earlier stage of star formation, or to be associated with lower mass star formation that does not exhibit methanol masers or radio continuum sources.

Given the molecular cloud mass completeness limits of $400 M_\odot$ for clouds at distances of 3.2 kpc (Purcell et al. 2012), HOPS should only be able to detect low-mass star-forming regions out to distances of a few kiloparsecs. Fig. 3 shows the distribution of near kinematic distances derived in Paper II for sources in the four groups. The NH_3 -only sources appear to be systematically closer. In particular, the fraction of sources at distances >3 kpc is reduced compared to the other distributions. There are no clear differences in the distance distributions for sources associated with maser emission. This is consistent with the notion that the NH_3 -only group contains more nearby, low-mass star formation regions.

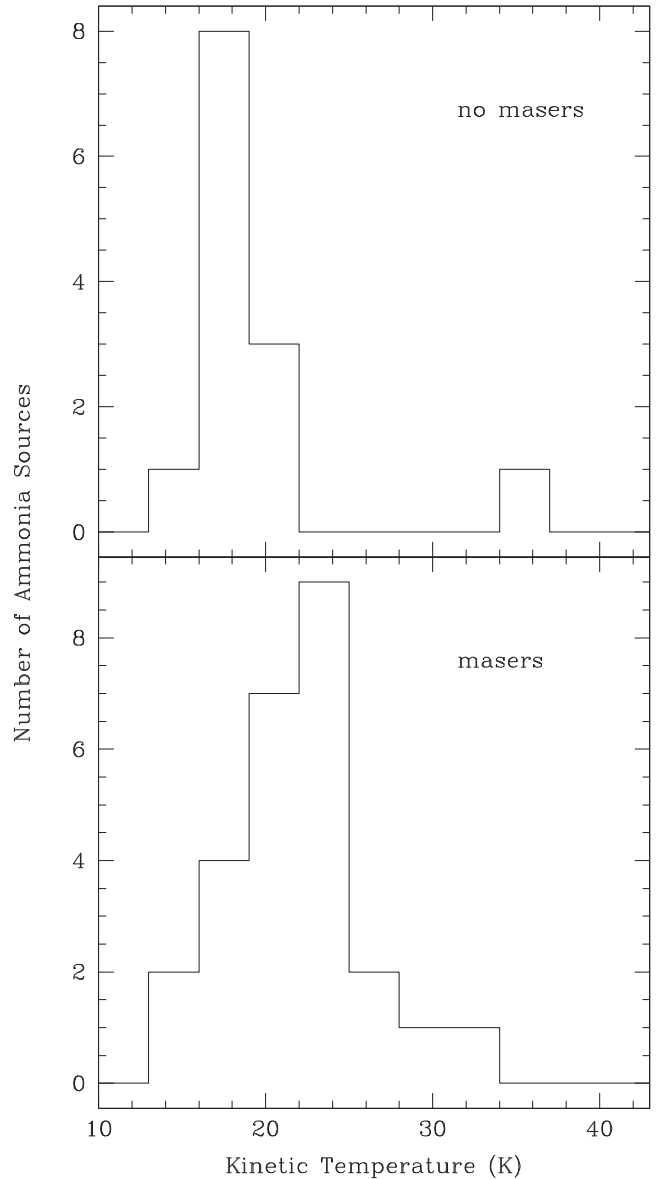


Figure 8. Distributions of kinetic temperatures for NH_3 sources. The distributions are shown for NH_3 clumps with no known maser association (top) and associations either water and/or methanol masers (bottom). The top distribution shows typically lower kinetic temperatures.

Fig. 4 shows the distributions of NH_3 (1,1) integrated intensity, multiplied by the square of the distance, for the same four subsamples. This quantity is useful as a measure of the *relative* mass of each region. While far too crude to use as an absolute mass measurement (it does not take into account the effects of gas temperature or variations in the NH_3 relative abundance, for example), this has the potential to highlight any major systematic differences in the NH_3 -derived mass between the groups. The range of values in all four groups are similar, but the combination of low number of sources in the groups and systematic uncertainties in the measurements mean we cannot determine statistically meaningful differences between the distributions.

We then focused on the ‘highly reliable’ sources identified using the criteria outline in Section 3. Applying these criteria, there are then 13, 14, 12 and 24 sources in groups (i)–(iv), respectively. The number of NH_3 sources associated with maser emission [groups

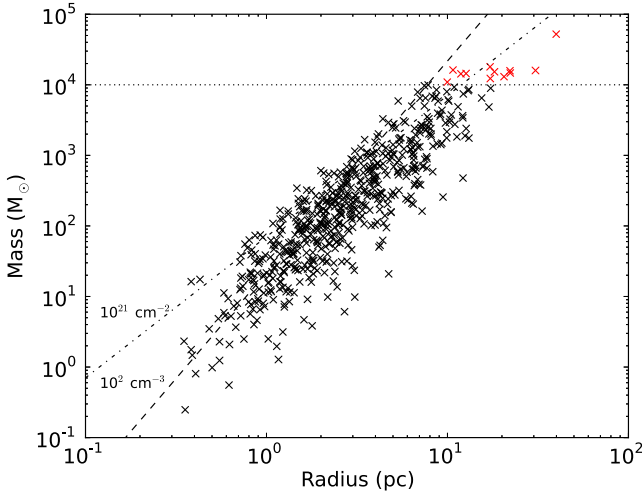


Figure 9. Mass versus radius for the 605 HOPS NH_3 sources which could be matched with the ATLASGAL catalogue. The dotted horizontal line shows the $10^4 M_\odot$ mass threshold. We find a total of 12 sources (marked as red points) above this threshold. The dashed line shows a constant volume density of 10^2 cm^{-3} . The dot-dashed line shows a constant column density of 10^{21} cm^{-2} .

(ii), (iii) and (iv)] drops by factors of several. However, the number of NH_3 -only sources [group (i)] drops by a factor ~ 40 .

Figs 5–8 show the distribution of near kinematic distance, integrated intensity multiplied by the square of the distance, line width and temperature, respectively, for the ‘highly reliable’ sources. There are no clear systematic differences between any of the distributions. There may be a slight trend for NH_3 -only sources to have lower line widths and temperatures than sources with masers – similar to results found by other authors (e.g. Longmore et al. 2007; Hill et al. 2010; Wienen et al. 2012) – but the low numbers of sources in each group and associated systematic uncertainties mean the trend is not statistically significant.

In summary, the NH_3 -only sources in the full catalogue are on average closer and have less reliable detections than NH_3 sources associated with maser emission. The ‘highly reliable’ NH_3 -only sources have similar distance and relative mass distributions as the NH_3 sources associated with maser emission, and may have slightly narrower NH_3 (1,1) line widths and lower gas temperatures as would be expected if they are younger than NH_3 sources associated with masers.

4.1 Searching for young massive cluster progenitors

The most massive ($>10^4 M_\odot$) and compact (radius $\sim \text{pc}$) stellar clusters are powerful probes of star formation across cosmological time-scales. Their very high (proto)stellar densities constitute the most extreme known stellar birth environments, providing stringent tests for star and planet formation theories. Being both very bright and compact, the clusters can be readily observed to large distances. The youngest of these are therefore ideal tracers of the recent star formation history of galaxies. Having survived for close to a *Hubble* time, globular clusters provide a window into star formation when the Universe was still in its infancy, and also trace the subsequent mass assembly of galaxies. Understanding how such extreme clusters form is therefore a key question in many areas of astrophysics.

The properties of YMCs have been studied in detail at optical and IR wavelengths for decades (see Portegies Zwart, McMillan & Gieles 2010, for a review). One of their defining characteristics are very centrally concentrated stellar mass profiles, and it is often assumed that the stars formed at similar (or even higher) protostellar densities. However, by the time the clusters are visible in the optical and IR, they are already a few Myr old. As the dynamical time of such dense stellar systems is much shorter than this (of order 0.1 Myr), the stars very quickly reach dynamical equilibrium, and the imprint of the initial conditions is lost. This makes it very difficult to unambiguously determine if the stars *formed* at such high density, or have dynamically evolved into this state from initially hierarchical sub-structure as observed for nearby star-forming regions and in cluster scale simulations (see e.g. Smith, Longmore & Bonnell 2009; Maschberger et al. 2010; Parker 2014; Wright et al. 2014).

A complementary approach to investigate how YMCs form is to search for the likely gas cloud progenitors of these clusters and determine the spatial/kinematic structure before they are visible in the optical/IR and dynamical effects have erased the initial conditions. The capabilities of both current and planned observational facilities mean for the next several decades at least, it will only be possible to detect and resolve individual stars forming in such clouds within our own Galaxy. Finding all the progenitor clouds in the Milky Way is therefore a key step towards understanding the formation mechanism of YMCs.

The recent completion of many multiwavelength, sensitive and high-resolution Galactic plane surveys has made it possible to begin systematic searches for YMC precursor clouds in the Milky Way (see Longmore et al. 2014, for a review). To date these have focused on finding gas clouds with enough mass ($>\text{few } 10^4 M_\odot$) in a small enough volume (radius $\sim 1 \text{ pc}$) that they have the potential to form a stellar system with a density profile similar to that observed

Table 4. Properties of HOPS sources identified as candidate YMC precursor gas clouds. The estimated mass (M), radius (R), FWHM, near distance (d_{near}), far distance (d_{far}), adopted distance (d_{adopted}) with associated error (Δd), and the probability that the source is at the adopted distance are given for each source. *A reliable estimate of near and far distance limits could not be obtained for these sources due to their close projected distance to the Galactic Centre.

Source	M $10^4 M_\odot$	R pc	FWHM km s^{-1}	d_{near} kpc	d_{far} kpc	$d_{\text{adopted}} (\Delta d)$ kpc	Probability
G003.432–0.351	1.2	17	3.08	*	*	21.1 (3.7)	0.59
G316.752+0.004	1.5	18	2.95	2.6	9.8	9.8 (0.8)	0.54
G330.881–0.371	1.1	9	3.5	3.9	11.0	11.0 (0.4)	0.7
G338.464+0.034	1.6	10	11.8	3.1	12.7	12.6 (0.5)	0.74
G341.224–0.274	1.3	20	1.89	3.6	12.5	12.4 (0.5)	0.79
G350.170+0.070	1.8	17	5.66	5.8	11.0	10.4 (0.4)	0.72
G357.555–0.323	1.5	22	1.48	*	*	16.8 (2.3)	0.79

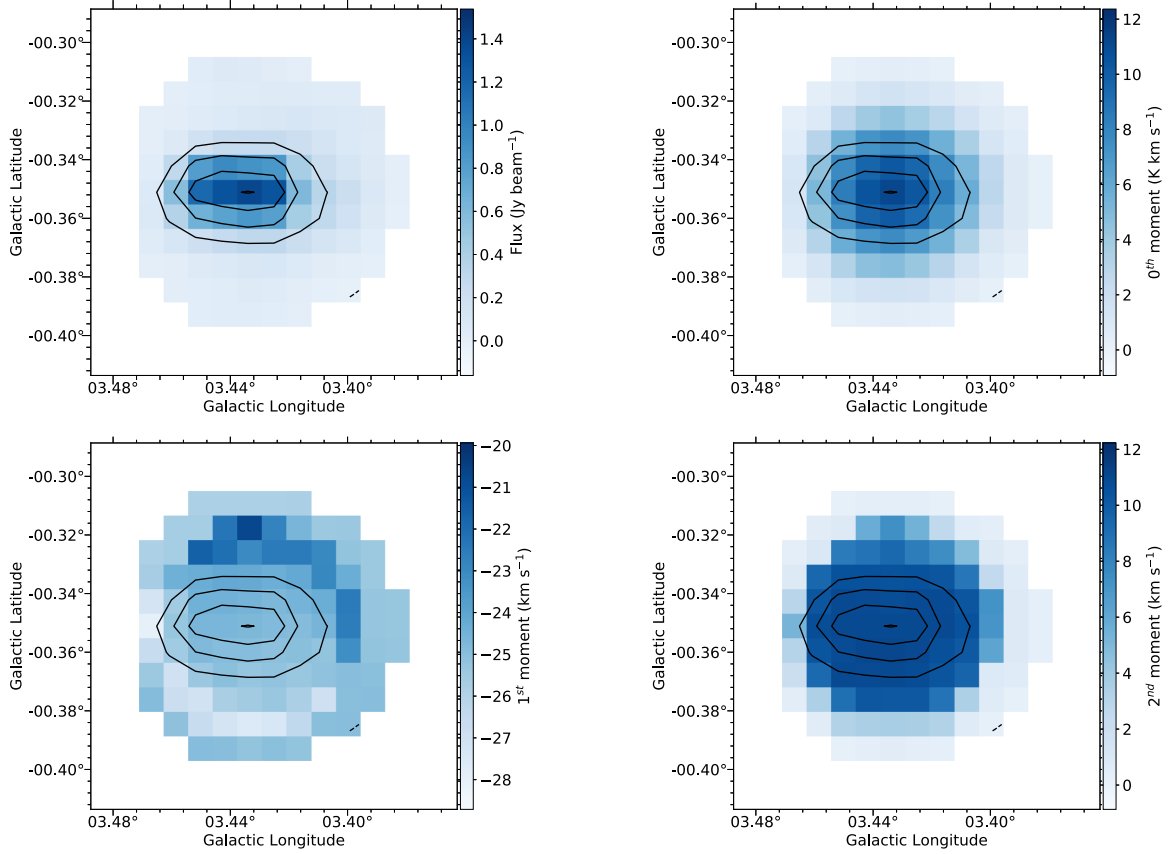


Figure 10. NH₃ (1,1) peak intensity [top left], integrated intensity (zeroth moment) [top right], velocity-weighted intensity (first moment) [bottom left], and intensity-weighted velocity dispersion (second moment) [bottom right] maps of HOPS YMC progenitor gas cloud candidate, G003.432–0.351 (Purcell et al. 2012). The contours in all panels show the peak intensity distribution in steps of 20 per cent of the maximum intensity in the map.

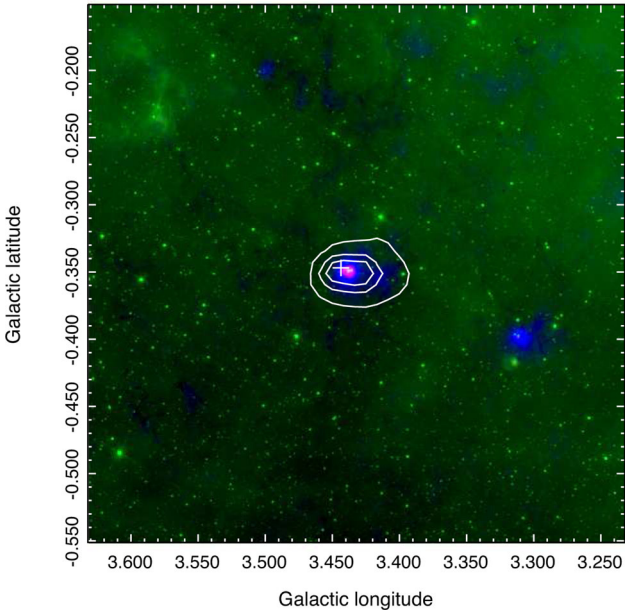


Figure 11. Three-colour images of YMC progenitor gas cloud candidate G003.432–0.351 [red, HiGAL 70 μm (Molinari et al. 2010); green, 8 μm GLIMPSE (Churchwell et al. 2009); blue, ATLASGAL 850 μm emission (Schuller et al. 2009)]. Crosses are methanol masers (Caswell et al. 2010, 2011) and plus symbols are HOPS water masers (Walsh et al. 2011, 2014). White contours show the NH₃ (1,1) integrated intensity emission.

for YMCs (Bressert et al. 2012). These surveys should easily be able to detect any such massive and compact objects through the Galaxy, and a small number of such candidate YMC precursor clouds have been found in both the Galactic disc (Ginsburg et al. 2012; Urquhart et al. 2013; Contreras et al. 2017) and the Galactic Centre (Longmore et al. 2012; Kauffmann, Pillai & Zhang 2013; Longmore et al. 2013; Johnston et al. 2014; Rathborne et al. 2014a,b, 2015).

Walker et al. (2015, 2016) analysed the radial gas distribution of all known YMC precursor candidates and showed that the gas mass profiles are generally shallower than the stellar mass surface density profiles of the YMCs. Therefore, despite dedicated observational searches which should be complete to such objects throughout the Galaxy, no clouds have been found with a sufficiently high gas mass concentration to form a system with stellar mass as centrally concentrated as observed for YMCs (i.e. $\sim 10^4 M_{\odot}$ within core radii of ~ 0.5 pc). The fact that more quiescent, less evolved clouds contain less mass in their central regions than highly star-forming clouds, suggests an evolutionary trend in which YMC progenitor clouds continue to accumulate mass towards their centres after the onset of star formation. However, even if the gas keeps flowing in, the stellar mass of the forming cluster may still dominate the local gravitational potential due to short free-fall times and rapid star formation, leading to central gas exhaustion (Kruijssen et al. 2012; Ginsburg et al. 2016).

There are several natural consequences of this ‘conveyor-belt’ mass accumulation scenario for YMC formation. First, at the earliest evolutionary stages, the mass in the precursor clouds that

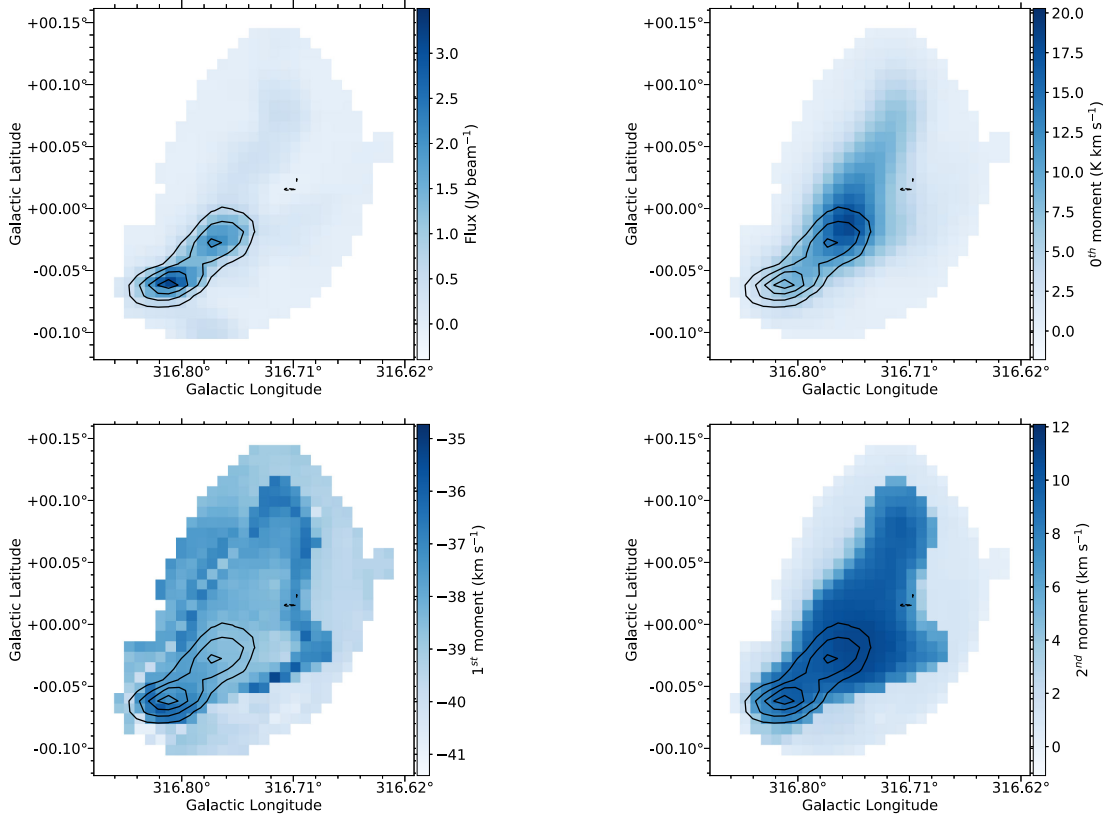


Figure 12. NH_3 (1,1) peak intensity [top left], integrated intensity (zeroth moment) [top right], velocity-weighted intensity (first moment) [bottom left], and intensity-weighted velocity dispersion (second moment) [bottom right] maps of HOPS YMC progenitor gas cloud candidate, G316.579+0.054 (Purcell et al. 2012). The contours in all panels show the peak intensity distribution in steps of 20 per cent of the maximum intensity in the map.

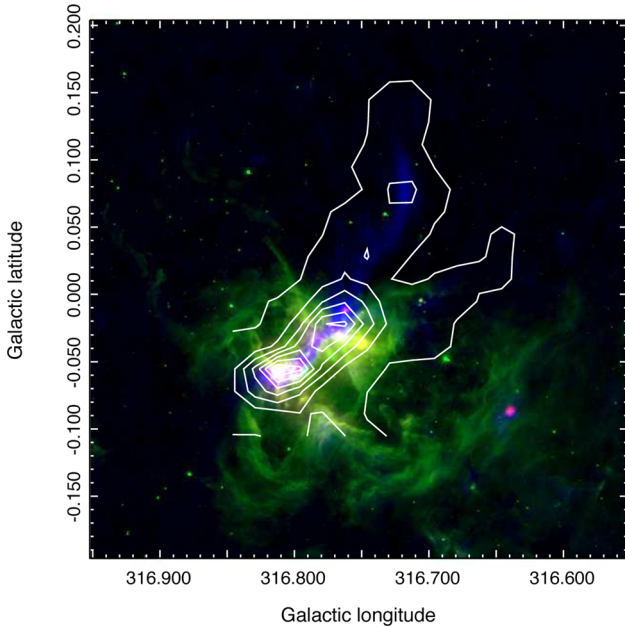


Figure 13. Three-colour images of YMC progenitor gas cloud candidate G316.579+0.054 [red, HiGAL 70 μm (Molinari et al. 2010); green, 8 μm GLIMPSE (Churchwell et al. 2009); blue, ATLASGAL 850 μm emission (Schuller et al. 2009)]. Crosses are methanol masers (Caswell et al. 2010, 2011) and plus symbols are HOPS water masers (Walsh et al. 2011, 2014). White contours show the NH_3 (1,1) integrated intensity emission.

ultimately ends up in the YMC is spread over a much larger radius. As such, potential YMCs precursor clouds at the earliest evolutionary stages may have been excluded from previous searches looking for clouds with $>10^4 M_\odot$ of gas within radii of <0.5 pc. Secondly, the gas at these larger radii must converge to the eventual cluster centre in less than 1 Myr – the upper limit to the observed stellar age spreads in YMCs (Longmore et al. 2014). This converging gas flow should be imprinted in the observed gas kinematics. As a large-area, blind, spectroscopic, dense gas Galactic plane survey with angular resolution corresponding to parsec-scale physical resolutions at the expected distances, HOPS is ideally suited to finding such YMC precursor clouds in the earliest evolutionary stages. Below we describe the method we used to search for YMC progenitor clouds in the HOPS data.

The fundamental property for a gas cloud to be included as a potential YMC precursor is that it has sufficient mass to form a stellar cluster of $10^4 M_\odot$. To derive the gas mass of the HOPS NH_3 sources we used data from the ATLASGAL survey (Schuller et al. 2009), providing a map of $>400 \text{ deg}^2$ of the inner Galaxy at 870 μm , with an angular resolution of $\sim 19''$. To match the sources in the HOPS catalogue with regions in the ATLASGAL map, we smoothed the full ATLASGAL map to the angular resolution and pixel scale of the HOPS data. We then applied the 2D HOPS masks (described in full detail in Paper II) to the ATLASGAL map and extracted the data within each HOPS mask as an individual map. As the spatial coverage of the two surveys are different, we were unable to obtain a masked dust map for every HOPS source. Of the 687 sources in the HOPS catalogue, we obtained 605 corresponding dust maps.

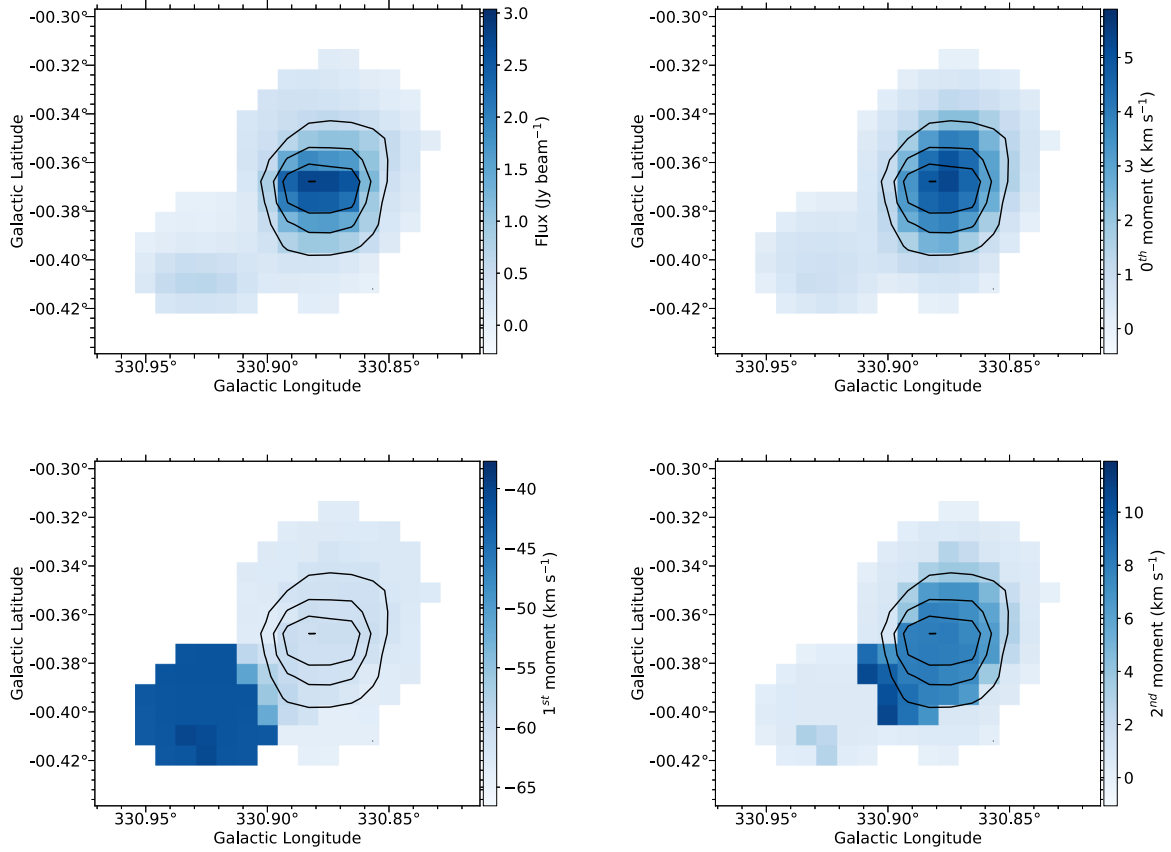


Figure 14. NH_3 (1,1) peak intensity [top left], integrated intensity (zeroth moment) [top right], velocity-weighted intensity (first moment) [bottom left], and intensity-weighted velocity dispersion (second moment) [bottom right] maps of HOPS YMC progenitor gas cloud candidate, G330.881–0.371 (Purcell et al. 2012). The contours in all panels show the peak intensity distribution in steps of 20 per cent of the maximum intensity in the map.

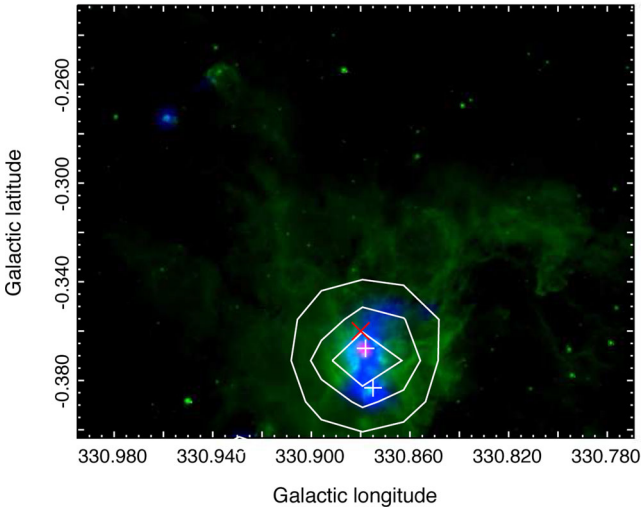


Figure 15. Three-colour images of YMC progenitor gas cloud candidate G330.881–0.371 [red, HiGAL 70 μm (Molinari et al. 2010); green, 8 μm GLIMPSE (Churchwell et al. 2009); blue, ATLASGAL 850 μm emission (Schuller et al. 2009)]. Crosses are methanol masers (Caswell et al. 2010, 2011) and plus symbols are HOPS water masers (Walsh et al. 2011, 2014). White contours show the NH_3 (1,1) integrated intensity emission.

We then estimated the mass of each HOPS source through,

$$M = \frac{d^2}{\kappa_v B_v(T)} \int I_v d\Omega = \frac{d^2 F_v}{\kappa_v B_v(T)},$$

where M is the mass, $B_v(T)$ is the *Planck* function, T is the dust temperature, κ_v is the dust opacity, F_v is the integrated flux and d is the distance. To estimate the dust opacity (κ_v), we use the following relation (Battersby et al. 2011),

$$\kappa_v = 0.04 \text{ cm}^2 \text{ g}^{-1} \left(\frac{\nu}{505 \text{ GHz}} \right)^{1.75},$$

where ν is the frequency. Note that this contains the assumption that the gas-to-dust-ratio is 100.

As we do not know the dust temperature for all of the sources, we assume a uniform value of 15 K in all cases. Though the true dust temperature is likely to be non-uniform and vary between the regions, 15 K is consistent with typical temperatures seen in molecular clouds and NH_3 -derived gas temperatures above, and in other studies (e.g. Wienen et al. 2012). Assuming the dust temperature for each source equals the HOPS NH_3 -derived gas temperature derived for that source does not affect the conclusions below.

The distance to each HOPS source was calculated from the NH_3 (1,1) V_{LSR} following the procedure outlined in Urquhart et al. (2014), but adopting the updated Galactic model described in Reid et al. (2014) which uses the most recent maser parallax measurements to constrain galactic rotation. We then couple these distance estimates with the estimated geometric radii for each catalogued source to determine their physical radii in parsecs.

With mass and radius estimates for the HOPS NH_3 sources, we then seek to identify which of these may be potential YMC precursor candidates. By definition, the stellar mass of YMCs is $\gtrsim 10^4 M_\odot$. Our first criteria is therefore to select HOPS sources

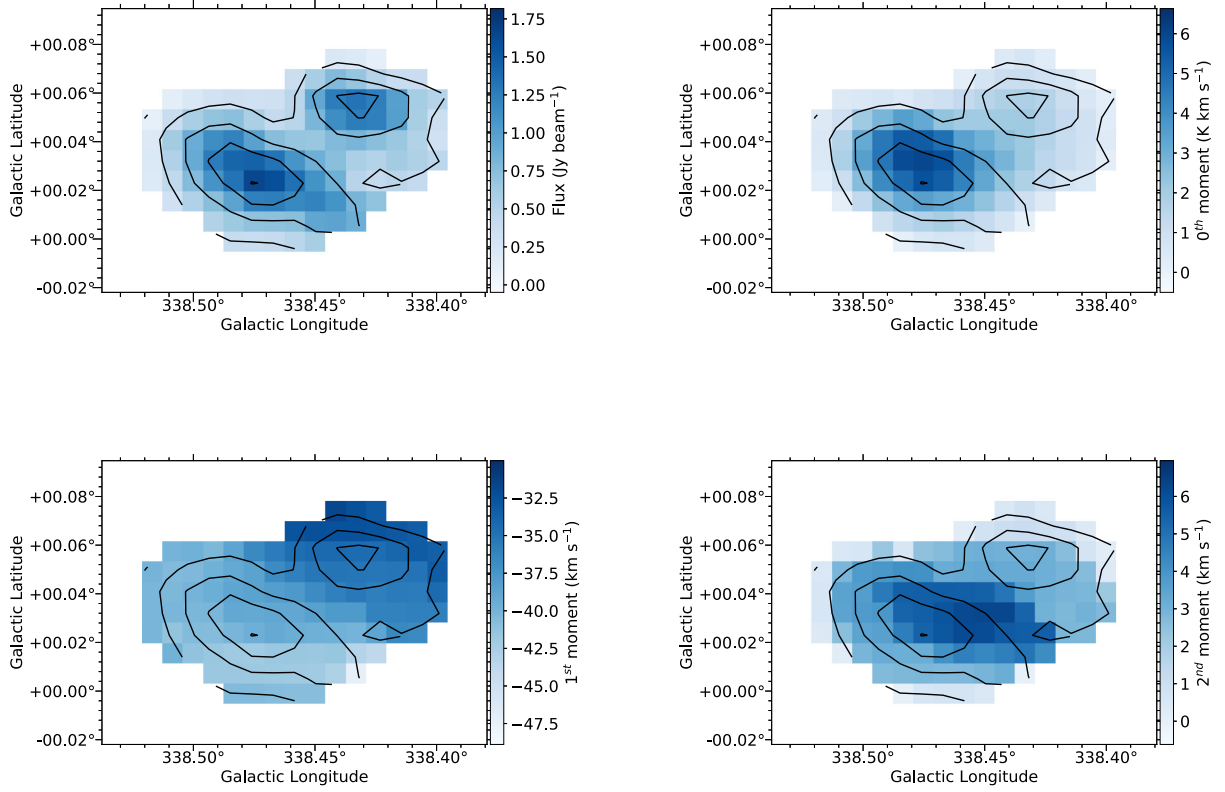


Figure 16. NH_3 (1,1) peak intensity [top left], integrated intensity (zeroth moment) [top right], velocity-weighted intensity (first moment) [bottom left], and intensity-weighted velocity dispersion (second moment) [bottom right] maps of HOPS YMC progenitor gas cloud candidate, G338.464+0.034 (Purcell et al. 2012). The contours in all panels show the peak intensity distribution in steps of 20 per cent of the maximum intensity in the map.

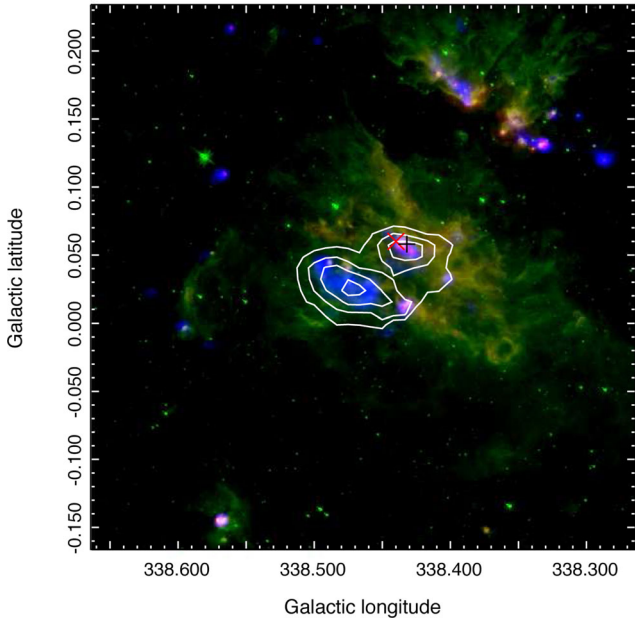


Figure 17. Three-colour images of YMC progenitor gas cloud candidate G338.464+0.034 [red, HiGAL 70 μm (Molinari et al. 2010); green, 8 μm GLIMPSE (Churchwell et al. 2009); blue, ATLASGAL 850 μm emission (Schuller et al. 2009)]. Crosses are methanol masers (Caswell et al. 2010, 2011) and plus symbols are HOPS water masers (Walsh et al. 2011, 2014). White contours show the NH_3 (1,1) integrated intensity emission.

with a large enough mass reservoir to form a YMC, i.e. $M > 10^4 M_\odot$. Fig. 9 shows the mass versus radius for the 605 HOPS NH_3 sources which could be matched with the ATLASGAL catalogue. The dotted horizontal line shows the $10^4 M_\odot$ mass threshold. We find a total of 12 sources (marked as red points) above this threshold.

Many of the sources are found projected within a few degrees of the Galactic Centre. Inspection of the dust continuum emission and the NH_3 (1,1) integrated intensity, velocity field and the velocity dispersion towards G001.374+0.112, G002.826+0.048, G003.145+0.3014, G003.340+0.396 and G358.894−0.290, show that these sources all have very broad line profiles, with full width at half-maximum (FWHM) well in excess of $>15 \text{ km s}^{-1}$. Inspection of the full HOPS NH_3 data cubes show these sources are clearly associated with prominent features in the Galactic Centre such as the ‘1:3 cloud’, ‘Clump 2’ and ‘Sgr C’ (see Section 5). They have likely have only been identified as separate sources in Paper II as the emission linking them to the main structures falls below the HOPS sensitivity threshold. The kinematic models used to determine distances from the V_{LSR} are not reliable for regions so close to the Galactic Centre. In addition, the 15 K dust temperature is likely to be an underestimate (Ginsburg et al. 2016). Placing these sources at the correct distance of $\sim 8.5 \text{ kpc}$ and using a lower limit to the dust temperature of 20 K, the mass of these sources drops below $10^4 M_\odot$. We conclude that these are unlikely to be YMC precursor clouds.

Table 4 summarizes the properties of the remaining seven sources, Figs 10, 12, 14, 16, 18, 20 and 22 show their dust continuum emission and the NH_3 (1,1) integrated intensity, velocity field and the velocity dispersion. Figs 11, 13, 15, 17, 19, 21 and 23 show the mid-IR images for the seven sources. Below, we investigate

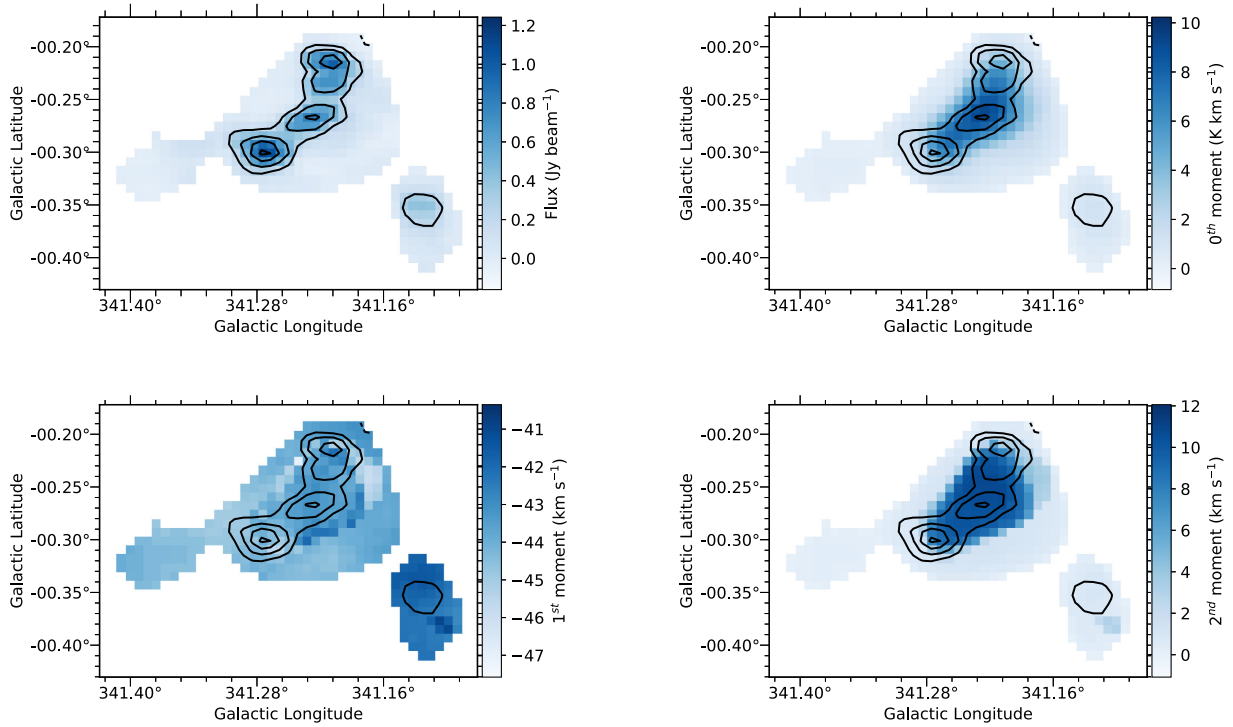


Figure 18. NH_3 (1,1) peak intensity [top left], integrated intensity (zeroth moment) [top right], velocity-weighted intensity (first moment) [bottom left], and intensity-weighted velocity dispersion (second moment) [bottom right] maps of HOPS YMC progenitor gas cloud candidate, G341.224–0.274 (Purcell et al. 2012). The contours in all panels show the peak intensity distribution in steps of 20 per cent of the maximum intensity in the map.

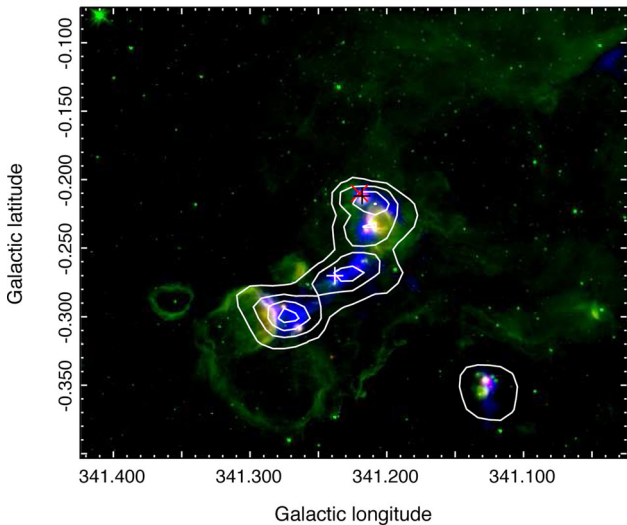


Figure 19. Three-colour images of YMC progenitor gas cloud candidate G341.224–0.274 [red, HiGAL 70 μm (Molinari et al. 2010); green, 8 μm GLIMPSE (Churchwell et al. 2009); blue, ATLASGAL 850 μm emission (Schuller et al. 2009)]. Crosses are methanol masers (Caswell et al. 2010, 2011) and plus symbols are HOPS water masers (Walsh et al. 2011, 2014). White contours show the NH_3 (1,1) integrated intensity emission.

each in turn and weigh up the likelihood that each may be a YMC progenitor gas cloud.

Although G003.432–0.351 lies close in projection to the Galactic Centre, the much narrower velocity dispersion is consistent with a source outside the Galactic Centre. The large mass for this source comes primarily because the adopted distance is very large,

21.1 kpc, putting it at the outer reaches on the far side of the Galaxy. Inspection of mid-IR images (Fig. 11) shows the NH_3 (1,1) and dust emission line up very well with IR-dark gas clouds, suggesting the source lies on this side of the Galactic Centre ($d < 8.5$ pc) in front of the extended Galactic mid-IR emission. We note that the probability that the source lies at the far distance is rather low (0.59) and conclude that the distance is factors of several overestimated. The likely mass is therefore much less than $10^4 M_\odot$, and this source is not a YMC progenitor cloud.

The story for G316.752+0.004 seems to be similar. From the distance likelihood estimation, it is only marginally more probable that the source lies at the far distance of 9.8 kpc, rather than the near distance of 2.6 kpc. The mid-IR images also show absorption features with a similar morphology as the dust and NH_3 emission, which would suggest this source is at the near distance. Indeed, previous studies have concluded this source is at the near distance (see Longmore et al. 2007, and references therein). In which case, the mass in Table 4 is overestimated by a factor ~ 13 . We conclude this source is unlikely to be a YMC progenitor cloud.

The dust continuum and NH_3 (1,1) maps of G330.881–0.371 show two peaks offset by ~ 5 –10 pc. These are clearly at two very different velocities. The brighter component is at $V_{\text{LSR}} = -63 \text{ km s}^{-1}$, and the weaker at -41 km s^{-1} . We conclude the gas at the different velocities is not physically associated. We focus on the brightest component as this is the one which dominates the dust and NH_3 emission, and for which the distance has been calculated. Masking the weaker component, the mass drops, by ~ 10 per cent to $\sim 10^4 M_\odot$. Although the mid-IR images show absorption with similar morphology as the dust emission, the nebulousity may be associated with the region, weakening the argument that this absorption places the source at the near distance. The brighter gas and dust component is associated with an embedded

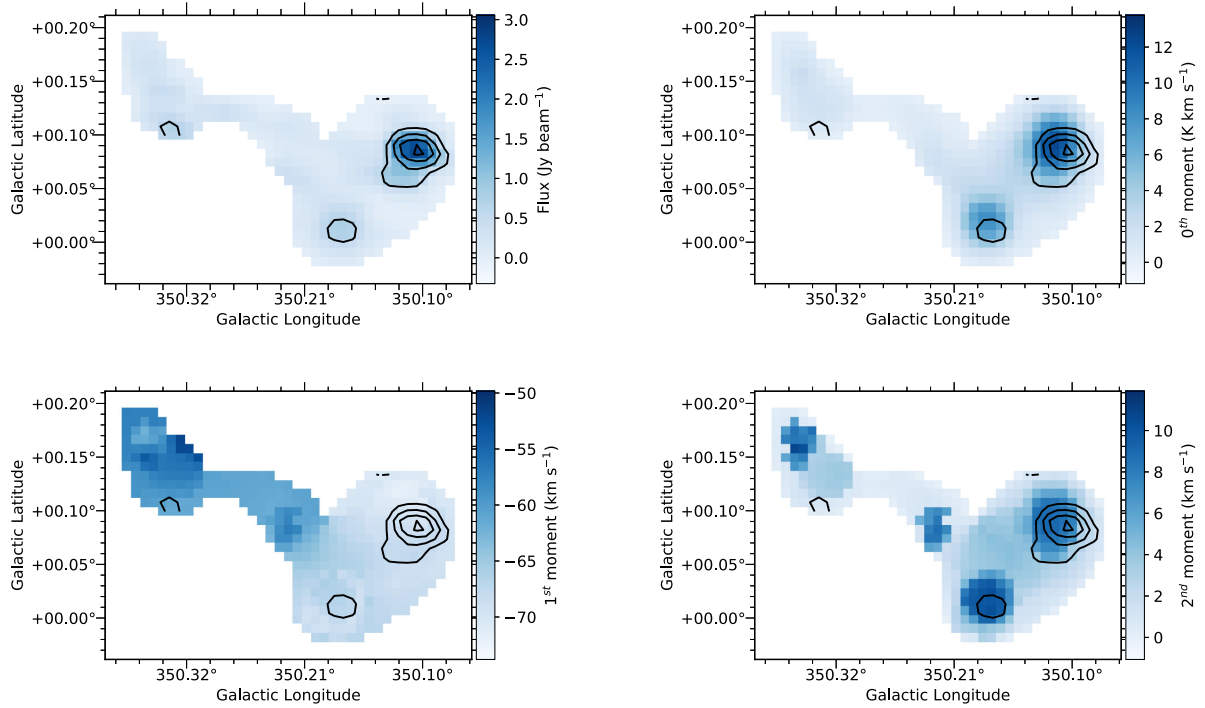


Figure 20. NH_3 (1,1) peak intensity [top left], integrated intensity (zeroth moment) [top right], velocity-weighted intensity (first moment) [bottom left], and intensity-weighted velocity dispersion (second moment) [bottom right] maps of HOPS YMC progenitor gas cloud candidate, G350.170+0.070 (Purcell et al. 2012). The contours in all panels show the peak intensity distribution in steps of 20 per cent of the maximum intensity in the map.

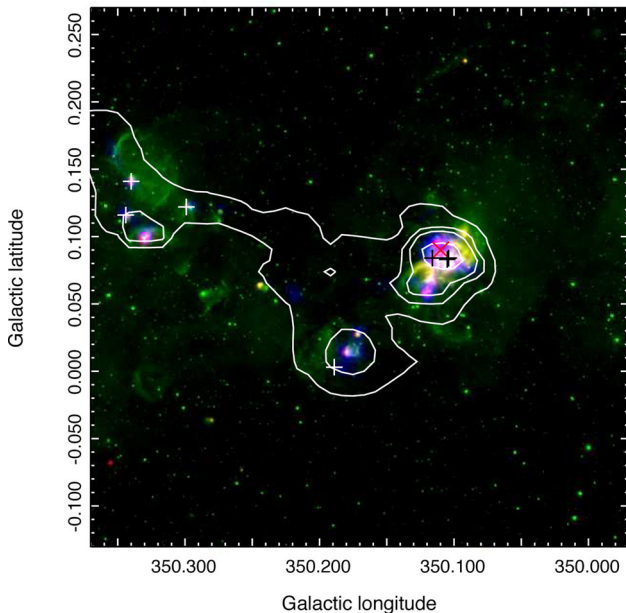


Figure 21. Three-colour images of YMC progenitor gas cloud candidate G350.170+0.070 [red, HiGAL 70 μm (Molinari et al. 2010); green, 8 μm GLIMPSE (Churchwell et al. 2009); blue, ATLASGAL 850 μm emission (Schuller et al. 2009)]. Crosses are methanol masers (Caswell et al. 2010, 2011) and plus symbols are HOPS water masers (Walsh et al. 2011, 2014). White contours show the NH_3 (1,1) integrated intensity emission.

70 μm source and maser emission, showing that star formation is underway, although at an early evolutionary stage. Whether or not this source is a YMC progenitor candidate depends primarily on correctly resolving the distance ambiguity. But even if it does lie at

the far distance, more detailed calculations of the mass (e.g. including the actual distribution of dust temperature) are required to see if the mass reservoir is large enough for the cloud to produce a YMC.

The dust continuum and NH_3 (1,1) maps of G338.464+0.034 show two, distinct peaks of roughly equal intensity, offset by ~ 5 –10 pc. The mid-IR images show significant nebulosity, although it is not clear if this is physically associated with the dense gas. The northern gas component has an embedded 70 μm source and maser emission showing that star formation is underway. The probability that this source lies at the far distance is high (0.74), and there is no evidence of mid-IR absorption features with similar morphology to the NH_3 (1,1) and dust emission. At the peak of the NH_3 (1,1) integrated intensity and dust emission the two gas clumps are offset in velocity by $\sim 6 \text{ km s}^{-1}$. Although there are clear signs of a velocity gradient along the major axis of the two clumps, suggesting that they may be physically associated, the angular resolution of the HOPS data is too coarse to see whether this velocity gradient is unambiguously contiguous from one clump to the other. As such, we cannot rule out that these may be physically unassociated dense clumps which are serendipitously projected along our line of sight. However, if they are physically associated, it is intriguing that the velocity gradient is sufficient to bring the two clumps together in $\sim 1 \text{ Myr}$ – the maximum age spread observed for YMCs. This is an interesting candidate to follow up as a potential YMC progenitor candidate.

Both the dust and NH_3 emission for G341.224–0.274 show multiple components spread over a projected radius of $>20 \text{ pc}$. The probability that this source is at the far distance of 0.79 is the most robust for all the sources. Fig. 19 shows that this is an area of intense star formation activity. The NH_3 (1,1) data cubes show there is almost no change in velocity across the main ridge of source which contains most of the mass. Unless there are convergent gas motions of $>10 \text{ km s}^{-1}$ purely in the plane of the sky, which seems unlikely,

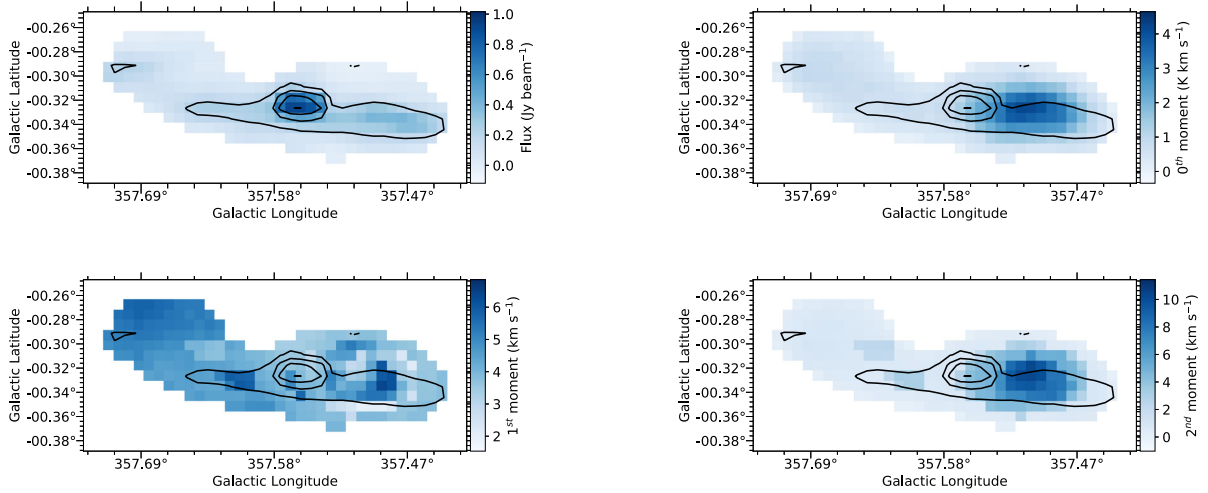


Figure 22. NH_3 (1,1) peak intensity [top left], integrated intensity (zeroth moment) [top right], velocity-weighted intensity (first moment) [bottom left], and intensity-weighted velocity dispersion (second moment) [bottom right] maps of HOPS YMC progenitor gas cloud candidate, G357.555–0.323 (Purcell et al. 2012). The contours in all panels show the peak intensity distribution in steps of 20 per cent of the maximum intensity in the map.

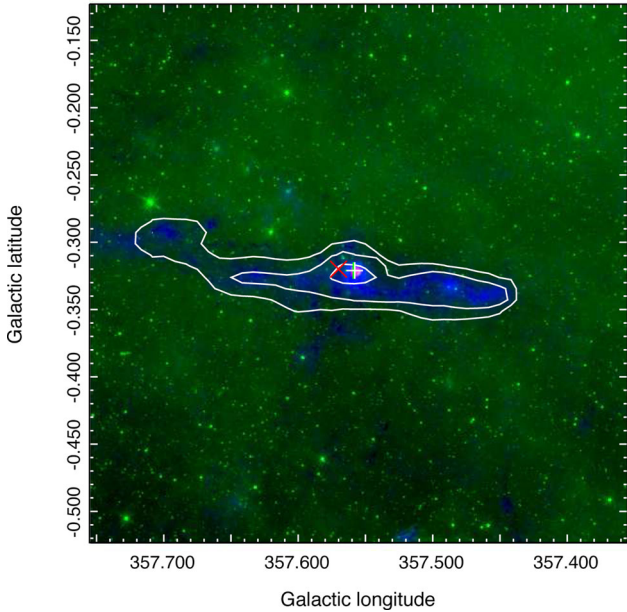


Figure 23. Three-colour images of YMC progenitor gas cloud candidate G357.555–0.323 [red, HIGAL 70 μm (Molinari et al. 2010); green, 8 μm GLIMPSE (Churchwell et al. 2009); blue, ATLASGAL 850 μm emission (Schuller et al. 2009)]. Crosses are methanol masers (Caswell et al. 2010, 2011) and plus symbols are HOPS water masers (Walsh et al. 2011, 2014). White contours show the NH_3 (1,1) integrated intensity emission.

there is no way the gas in this source can condense to a radius of 0.1 pc within 1 Myr. We therefore conclude this is unlikely to be a YMC progenitor.

The dust continuum and NH_3 (1,1) maps of G350.170+0.070 show two, distinct peaks of roughly equal intensity, offset by ~ 5 –10 pc, and surrounding lower intensity, filamentary emission, all linked contiguously in the NH_3 (1,1) velocity cube. Fig. 21 shows that this is an area of intense star formation activity across the complex. There is a $\sim 5 \text{ km s}^{-1}$ velocity gradient across the two brightest components, but there is no way to tell if this is due to convergent motions or not. Further analysis of the physical and kinematic sub-

structure of this source are needed to determine whether it has the potential to form a YMC.

For G357.555–0.323, both the dust and NH_3 (1,1) integrated intensity emission are dominated by a single component. However, although the dust and dense gas have a similar, elongated morphology, the peaks are offset from each other by a projected distance of a few parsecs. The NH_3 (1,1) data cubes show there is almost no change in velocity across the main ridge of the source which contains most of the mass. Similar to G341.224–0.274, unless there are convergent gas motions of $> 10 \text{ km s}^{-1}$ purely in the plane of the sky, which seems unlikely, there is no way the gas in this source can condense to a radius of 0.1 pc within 1 Myr. We therefore conclude this is unlikely to be a YMC progenitor.

In summary, our search to find YMC progenitor candidate clouds using the HOPS data has proved inconclusive. The main limiting factor in determining whether or not most of the sources are genuine YMC progenitor candidates is the uncertainty in the distance. Although several sources may lie at the far kinematic distance, and therefore have sufficient mass to form a YMC, more detailed investigation is required to prove this. The most promising candidates are G330.881–0.371, G338.464+0.034 and G350.170+0.070. If these do lie at the far kinematic distance, and all the gas is physically associated, the NH_3 (1,1) velocity structure suggests the magnitude of the gas motion is sufficient to bring the mass to a radius of < 1 pc in under 1 Myr. However, the major caveat for this to occur is that these gas flows must be convergent. Further analysis of the kinematics of the dense gas and surrounding lower density envelopes from existing survey data (e.g. Jackson et al. 2013; Bihr et al. 2015; Beuther et al. 2016; Jordan et al. 2015; Rathborne et al. 2016; Rigby et al. 2016; Bihr et al. 2016), and fragmentation at higher resolution (e.g. Longmore et al. 2006; Beuther, Walsh & Longmore 2009; Longmore et al. 2011; Henshaw et al. 2016, 2017) will form the basis of a subsequent paper.

Regardless of whether these turn out to be YMC progenitor clouds or not, one thing is clear – all the potential candidates we found are already forming stars. Despite relaxing our search criteria from those in Bressert et al. (2012) to find younger sources, and despite HOPS having sufficient sensitivity and resolution to find quiescent progenitor clouds, we did not find one. We conclude that the starless phase for YMC progenitor gas clouds in the disc of the Galaxy is

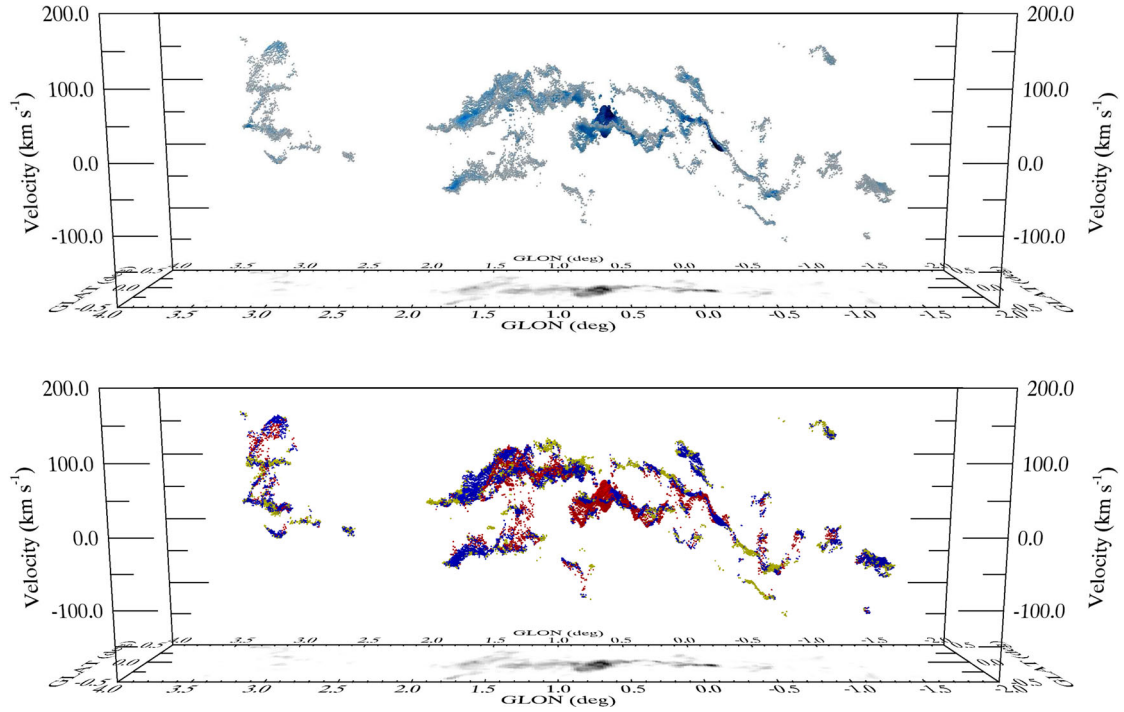


Figure 24. PPV map of the HOPS $\text{NH}_3(1,1)$ SCOUSE (Henshaw et al. 2016) fit results for gas detected in the inner 500 pc of the Galaxy (see the text for details). The grey scale on the bottom surface of each panel is the integrated intensity of the $\text{NH}_3(1,1)$ emission. Top: the colour and size of the symbols correspond to the peak brightness temperature of the $\text{NH}_3(1,1)$ emission at that PPV location, ranging on a linear scale from small, grey dots at the lowest peak brightness temperature (0.1 K) to large, blue dots at the highest peak brightness temperature (5.8 K). Bottom: the size of the symbols is equivalent to those in the top panel. The colour of each pixel however, now corresponds to the velocity dispersion of the emission separated into three ranges: yellow: $3.2 \text{ km s}^{-1} < \sigma < 14.5 \text{ km s}^{-1}$; blue: $14.5 \text{ km s}^{-1} < \sigma < 19.5 \text{ km s}^{-1}$; red: $19.5 \text{ km s}^{-1} < \sigma < 47.8 \text{ km s}^{-1}$.

either non-existent, or so short it is effectively not observable given the small number of YMCs expected to be forming at any time in the Milky Way.

5 GALACTIC CENTRE GAS KINEMATIC PROPERTIES

Figs 24–27 show the position–position–velocity (PPV) diagrams of the SCOUSE NH_3 fit results for gas detected in the inner 500 pc of the Galaxy (see Section 2.3 for details). In the various sub-plots, the size and colour of the symbols show the variation in either peak brightness temperature or velocity dispersion. The grey scale on the bottom surface of each panel shows the integrated intensity emission for that transition.

The detected PPV structure, variation in peak brightness temperature and variation in velocity dispersion of the independently fit $\text{NH}_3(1,1)$, (2,2) and (3,3) emission are very similar, giving further confidence in the robustness of the SCOUSE fit results. The integrated intensity of the emission from these transitions corresponds well to the high column density HiGAL gas distribution (Molinari et al. 2011, Battersby et al., in preparation).

In contrast, the $\text{NH}_3(6,6)$ emission is detected over a much smaller spatial extent than the other NH_3 transitions, being almost exclusively confined to the inner 150 pc ($|l| < 1^\circ$). The brightest $\text{NH}_3(6,6)$ emission is associated with the well-known star formation regions Sgr B2 ($l \sim 0.65$, $b \sim 0^\circ$, $V_{\text{LSR}} \sim 65 \text{ km s}^{-1}$), the ‘20’ and ‘50 km s^{-1} ’ clouds ($l \sim 0^\circ$, $b \sim 0^\circ$, $V_{\text{LSR}} \sim 20\text{--}50 \text{ km s}^{-1}$). Slightly weaker $\text{NH}_3(6,6)$ emission is detected towards a few locations along the ‘dust ridge’ ($l \sim 0.1\text{--}0.5$, $b \sim 0^\circ\text{--}0.2^\circ$, $V_{\text{LSR}} \sim 30 \text{ km s}^{-1}$). The only $\text{NH}_3(6,6)$ emission detected outside the inner 100 pc is at the

high longitude end of both velocity components of the ‘1:3’ cloud complex.

As we view the Galactic Centre through the disc of the Galaxy, there is a large column of gas along the line sight which is unassociated with this region. This can lead to (sometimes severe) contamination when trying to isolate emission from gas in the Galactic Centre (for example see fig. 4 in Bally et al. 1988) making it difficult to interpret the kinematics, especially at velocities close to $V_{\text{LSR}} \sim 0 \text{ km s}^{-1}$. The advantage of using transitions of NH_3 with a higher critical density than CO is immediately obvious in Figs 24–27. The NH_3 emission cleanly picks out the high-density Galactic Centre gas and none of the intervening, lower density, CO-bright molecular clouds in the disc.

A direct comparison between the NH_3 PPV diagrams in Figs 24–27 and other observations of high critical density molecular line transitions over the same region is difficult, because previous papers have tended to use moment maps and channel maps to investigate the kinematics (e.g. Jones et al. 2012; Ott et al. 2014). However, the general trends in NH_3 velocity structure appear qualitatively similar to those of other dense gas tracers in the literature.

Fig. 28 shows a comparison of the Henshaw et al. (2016) fits to the Jones et al. (2012) Mopra 3 mm HNC0 emission in grey and the HOPS $\text{NH}_3(1,1)$ emission in blue. In the overlapping spatial coverage range (between longitudes of $-0.7^\circ \lesssim l \lesssim 1^\circ$), the NH_3 PPV structure closely matches that of the HNC0, despite the factor ~ 4 lower angular resolution. This gives further confidence that the SCOUSE fits to these high-density tracers are robustly tracing the global gas kinematics.

The general trends in velocity structure – such as the two streams with large velocity gradients in the inner 100 pc and the large

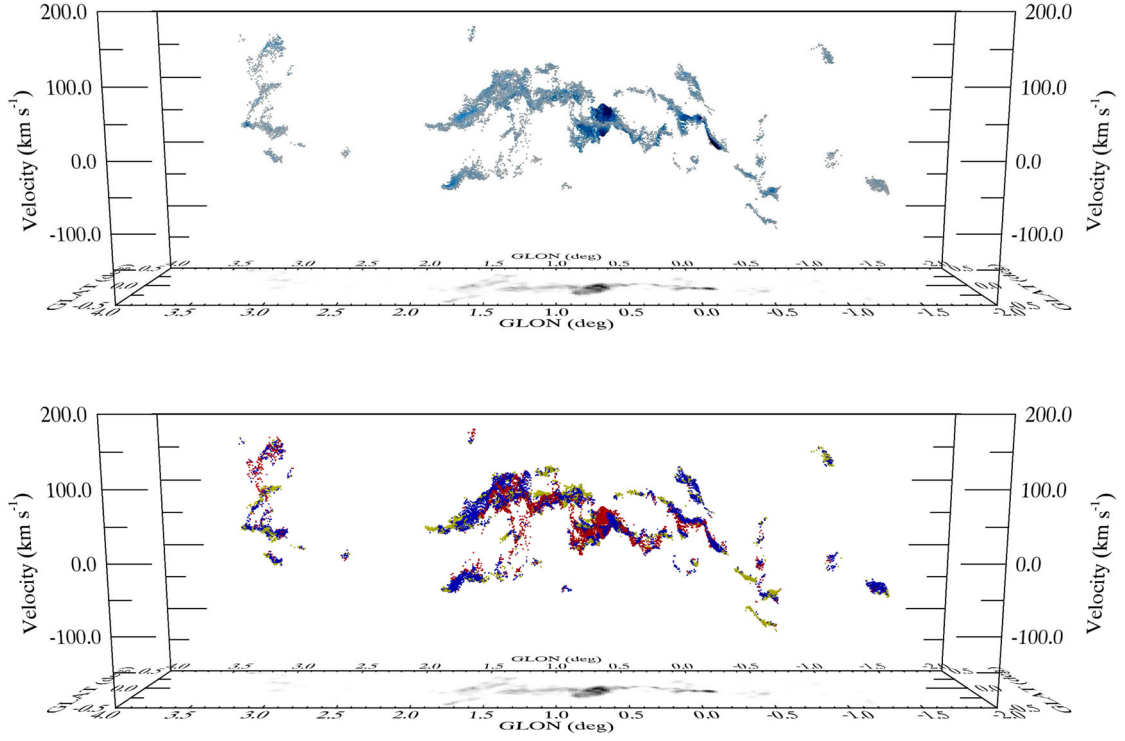


Figure 25. Equivalent to Fig. 24 but for the HOPS $\text{NH}_3(2,2)$ SCOUSE fit results. The colour and size of each pixel in the top panel scales linearly from small, grey dots at lowest peak brightness temperature (0.1 K) to large, blue dots at the highest peak brightness temperature (4.0 K). The colour of each pixel in the bottom panel corresponds to the following three ranges: yellow: $2.2 \text{ km s}^{-1} < \sigma < 12.7 \text{ km s}^{-1}$; blue: $12.7 \text{ km s}^{-1} < \sigma < 19.9 \text{ km s}^{-1}$; red: $19.9 \text{ km s}^{-1} < \sigma < 53.9 \text{ km s}^{-1}$.

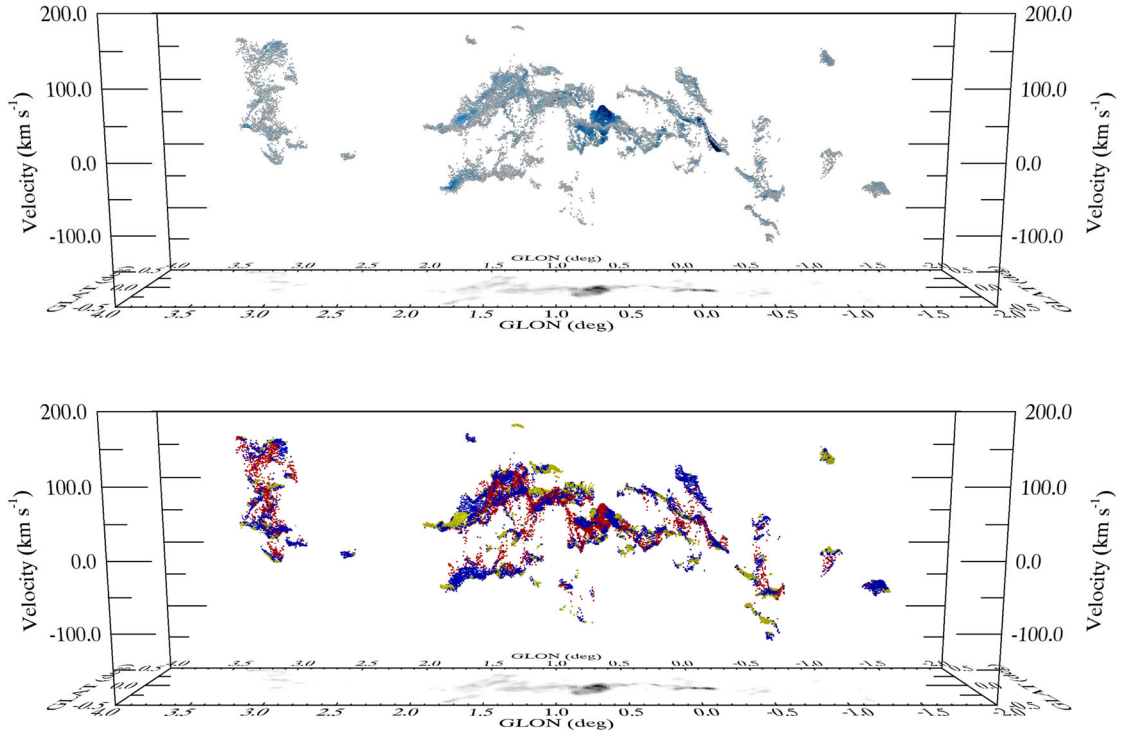


Figure 26. Equivalent to Fig. 24 but for the HOPS $\text{NH}_3(3,3)$ SCOUSE fit results. The colour and size of each pixel in the top panel scales linearly from small, grey dots at lowest peak brightness temperature (0.1 K) to large, blue dots at the highest peak brightness temperature (6.8 K). The colour of each pixel in the bottom panel corresponds to the following three ranges: yellow: $2.1 \text{ km s}^{-1} < \sigma < 10.2 \text{ km s}^{-1}$; blue: $10.2 \text{ km s}^{-1} < \sigma < 19.0 \text{ km s}^{-1}$; red: $19.0 \text{ km s}^{-1} < \sigma < 62.6 \text{ km s}^{-1}$.

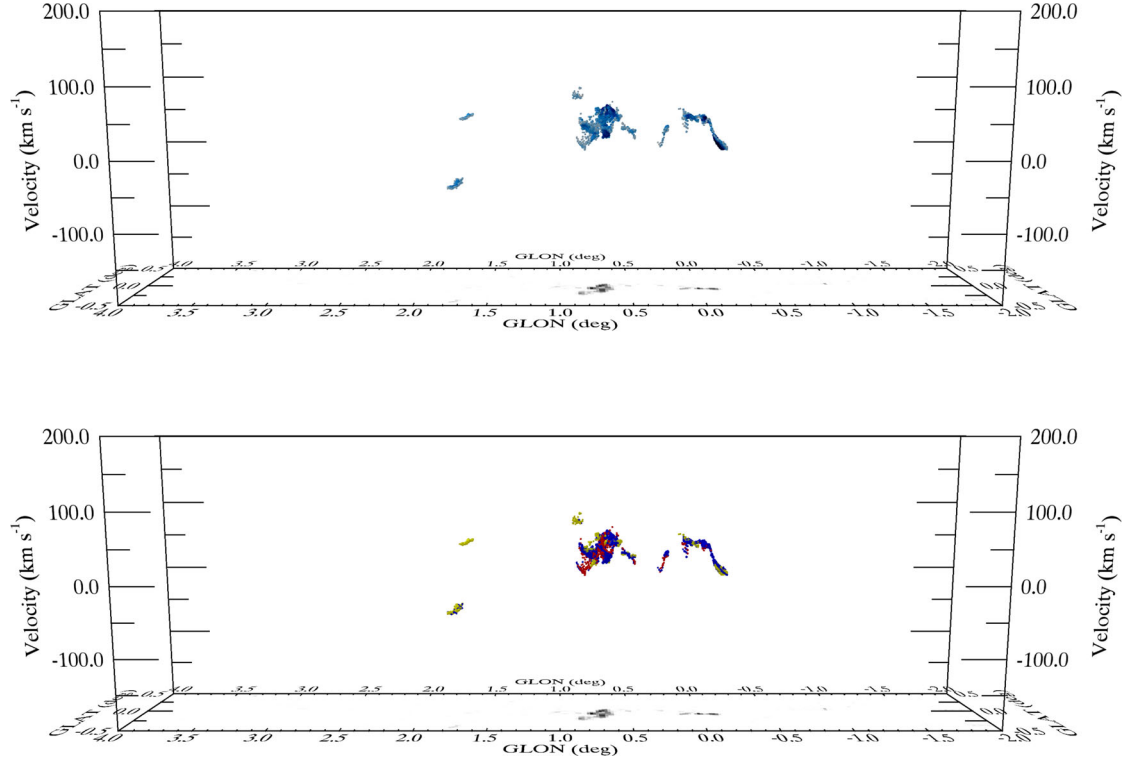


Figure 27. Equivalent to Fig. 24 but for the HOPS $\text{NH}_3(6,6)$ SCOUSE fit results. The colour and size of each pixel in the top panel scales linearly from small, grey dots at lowest peak brightness temperature (0.1 K) to large, blue dots at the highest peak brightness temperature (0.8 K). The colour of each pixel in the bottom panel corresponds to the following three ranges: yellow: $3.7 \text{ km s}^{-1} < \sigma < 9.6 \text{ km s}^{-1}$; blue: $9.6 \text{ km s}^{-1} < \sigma < 17.7 \text{ km s}^{-1}$; red: $17.7 \text{ km s}^{-1} < \sigma < 32.5 \text{ km s}^{-1}$.

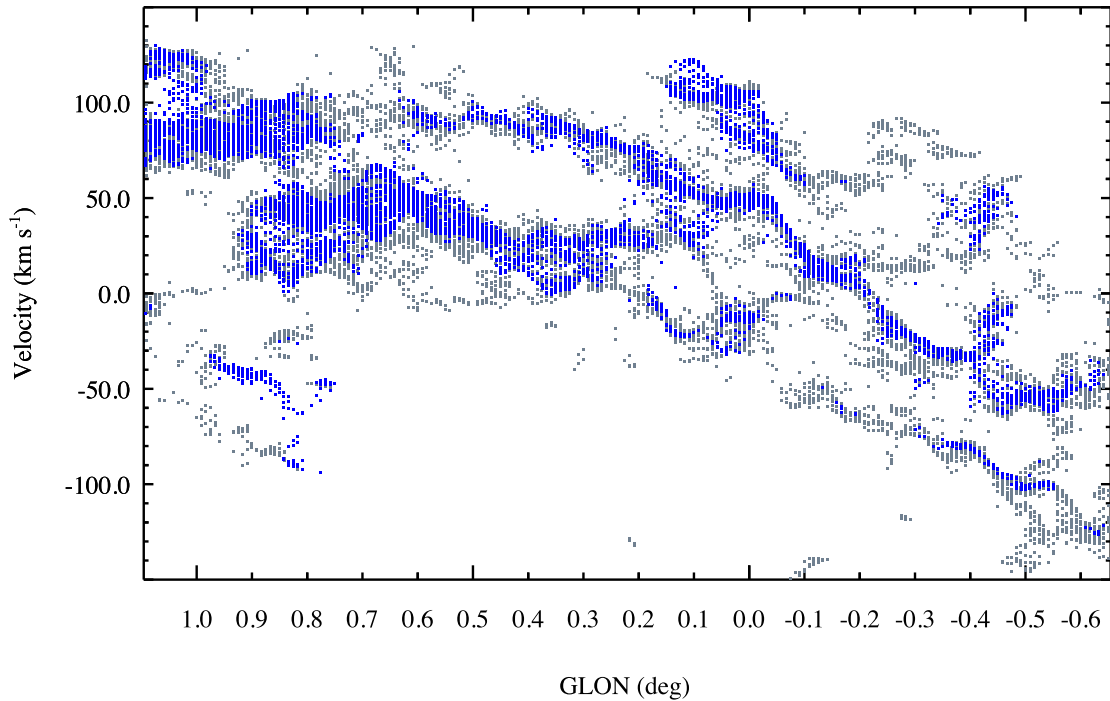


Figure 28. Comparison of the Henshaw et al. (2016) fits to the Jones et al. (2012) Mopra 3mm HNCO emission (grey) and the HOPS $\text{NH}_3(1,1)$ emission (blue). In the overlapping spatial coverage range between the two data sets (longitudes of $-0.7^\circ \lesssim l \lesssim 1^\circ$) the NH_3 PPV structure closely matches that of the HNCO, despite the factor ~ 4 lower angular resolution. This gives confidence that the SCOUSE fits to these high-density tracers are robustly tracing the global gas kinematics.

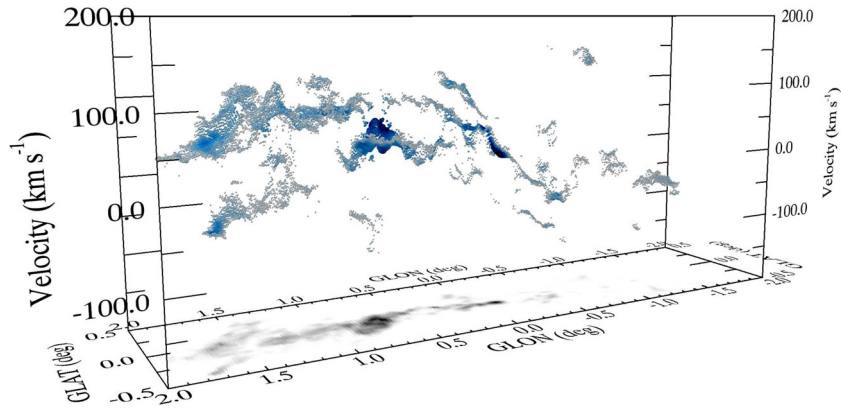


Figure 29. Equivalent to the top panel of Fig. 24, but zoomed into $-2^\circ < l < 2^\circ$ and rotated to accentuate oscillatory patterns observed in the gas kinematic structure.

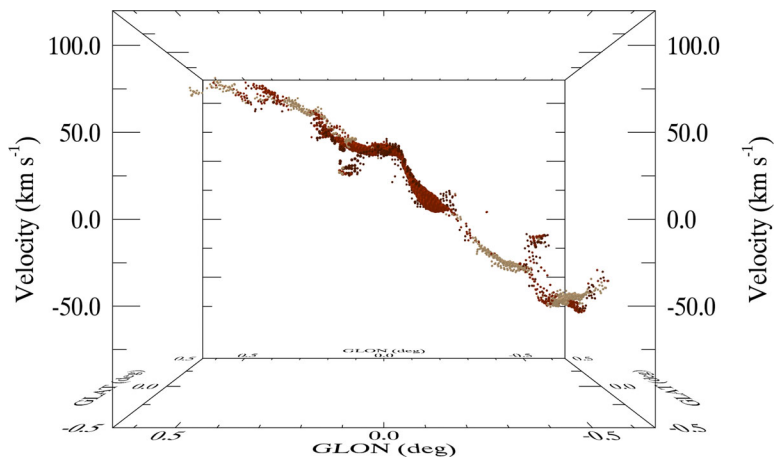


Figure 30. PPV diagram of the HOPS $\text{NH}_3(1,1)$ SCOUSE (Henshaw et al. 2016) fit results for gas detected towards the gas stream containing the 20 and 50 km s^{-1} clouds. The colour and size of the symbols corresponds to the velocity dispersion of the emission separated into four quartiles: first quartile, small grey symbol, $\sigma = 5\text{--}10 \text{ km s}^{-1}$; second quartile, larger blue symbols, $\sigma = 10\text{--}15 \text{ km s}^{-1}$; third quartile, larger green symbols, $\sigma = 15\text{--}20 \text{ km s}^{-1}$ and fourth quartile, largest red symbols, $\sigma = 20\text{--}25 \text{ km s}^{-1}$.

velocity dispersion towards Sgr B2 – are similar to those reported by other authors (see Kruijssen, Dale & Longmore 2015; Henshaw et al. 2016, and references therein). One important advantage of fitting independent profiles to every velocity component in the data cube is to minimize blending in velocity space prevalent in moment maps or when creating PV diagrams by collapsing the data cube over one of the two position axes (e.g. summing along latitude to create a longitude–velocity diagram). By fitting (multiple) Gaussian components to every pixel and viewing in the full 3D PPV space, it is possible to pick out finer kinematic details than in moment maps and 2D PV diagrams. Henshaw et al. (2016) reported seeing regular oscillatory patterns, or ‘wiggles’ in the two coherent gas streams in the inner 100 pc. As shown in Figs 29 and 30, the same oscillatory pattern is seen in the NH_3 data. The detection of these oscillations with an independent data set, at a different angular resolution and using a different molecular species to trace the gas, confirms these are robust kinematic features. We discuss the potential origin of these features as gravitational instabilities in the gas streams in Henshaw, Longmore & Kruijssen (2016).

Fig. 29 shows oscillatory patterns in the kinematic structure of both velocity components of the gas in the $1^\circ 3'$ cloud. Although the oscillation length is similar to those in the inner 100 pc, the gas in these clouds does not appear to be self-gravitating (Kruijssen

et al. 2014). Therefore, the origin of these features is unlikely to be related to gravitational instabilities. We are currently investigating what mechanisms may give rise to such features.

The only region which does not show oscillatory motions in the kinematic structure is the gas at $l > 3^\circ$, known as Clump 2. Interestingly, this is also the region with the most complicated velocity structure. Fig. 31 shows the PPV structure of this region from two different perspectives. There are clearly several coherent kinematic components, but without knowing their (relative) line-of-sight positions, it is not possible to infer if they are physically connected, or simply projected and overlapping in PPV space. Most of the coherent velocity components have a constant velocity along their full extent. The exception to this is the two features highlighted by ellipses in the top panel of Fig. 31. These have very steep velocity gradients, both rising by $\sim 50 \text{ km s}^{-1}$ over a projected length of 30 pc (assuming a distance of 8 kpc). Understanding the origin of the kinematic complexity of Clump 2 remains a challenge.

We now turn to the measured velocity dispersion across the region. As discussed in Section 2.3, the lower $\text{NH}_3(J,K)$ transitions can be affected by opacity broadening. However, as shown in Figs 24–27, the trends in velocity dispersion are the same for all the NH_3 transitions. While the absolute velocity dispersion of the $\text{NH}_3(1,1)$

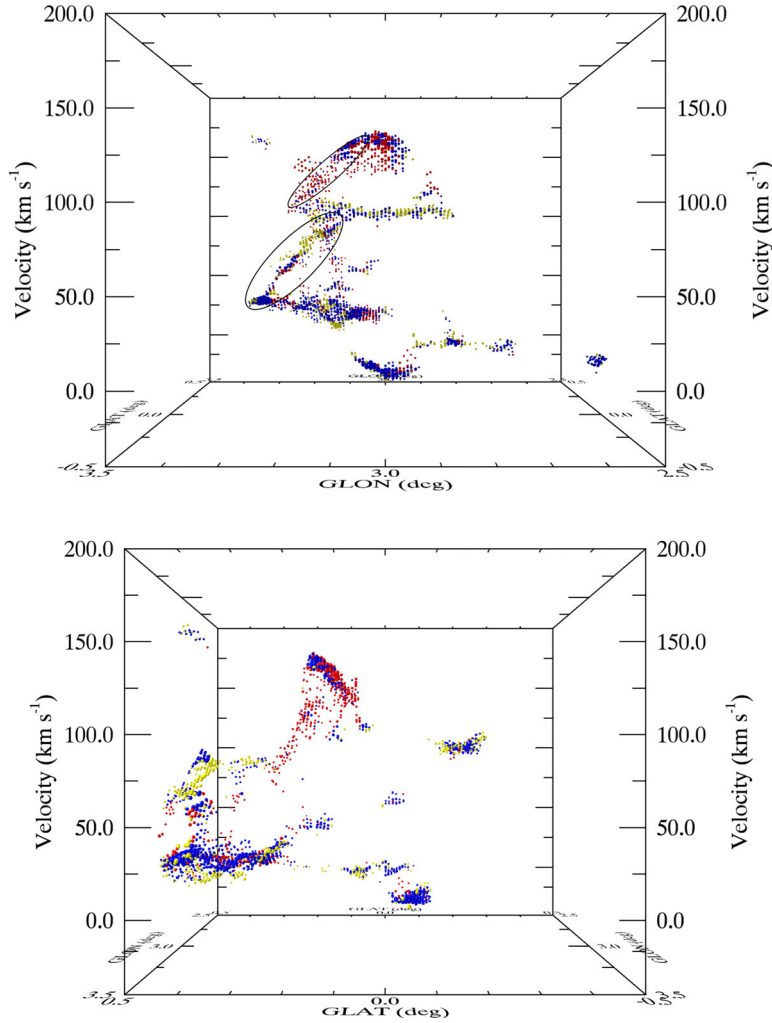


Figure 31. PPV diagram of the HOPS $\text{NH}_3(1,1)$ fit results for gas detected towards the region with $l > 3.0^\circ$, known as Clump 2. The size and colour of each pixel is equivalent to that presented in the bottom panel of Fig. 24. The top panel and bottom panels depict the $\{l, v_{\text{LSR}}\}$ and $\{b, v_{\text{LSR}}\}$ projections, respectively. The black ellipses in the top panel highlight the kinematic components referred to in the text with steep velocity gradients.

and (2,2) may be overestimated, the relative velocity dispersion of gas over the region should be robust against opacity-broadening.

The highest velocity dispersions are observed towards the Sgr B2 and 20 and 50 km s^{-1} clouds. These clouds contain some of the most active embedded star formation activity in the Galactic Centre region (Lu et al. 2015, 2017). It is therefore unclear if these clouds had intrinsically large velocity dispersions before forming stars, or whether the affect of stellar feedback may have been responsible for increasing their velocity dispersions from their pre-star formation state.

The remaining regions all contain PPV components with a large spread in the measured velocity dispersion. However, there are some broad trends in the relative numbers of low- and high-velocity dispersion components as a function of longitude. Excluding the gas associated with known star-forming regions, the gas in the inner 100 pc has a noticeably higher concentration of smaller velocity dispersion components than the gas outside of the inner 100 pc. Conversely, the largest concentration of high-velocity dispersion components (again excluding the gas associated with known star-forming regions) is in the centre of the $l \sim 3^\circ$ cloud. The gas at $l \sim 3^\circ$ is dominated by components with an intermediate velocity dispersion. We note that this result is very different than the velocity

dispersion that would be inferred for the $l \sim 3^\circ$ cloud from moment analysis. The multiple, overlapping velocity components, including some with very large projected velocity gradients, would lead to moment analysis overestimating the intrinsic velocity dispersion of this gas by factors of several.

Finally, we note that this new level of kinematic precision may help understand which mechanism(s) are responsible for driving gas from the disc of the Milky Way towards the Galactic Centre. Several gas transport mechanisms have been proposed in the literature. In those which can be loosely described as ‘direct-infall’, gas in the disc feels a torque from the bar, loses angular momentum and falls directly towards the Galactic Centre along the leading edge of the bar, and x_1 and x_2 orbits play a major role in the gas transport (e.g. Sofue 1995; Morris & Serabyn 1996; Bally et al. 2010). In other scenarios, gas within the bar’s inner Linblad resonance ($\sim 1 \text{ kpc}$ for the Milky Way) is driven inwards by angular momentum transport induced by acoustic instabilities (Montenegro, Yuan & Elmegreen 1999; Kruijssen et al. 2014; Krumholz & Kruijssen 2015; Krumholz, Kruijssen & Crocker 2017). Approaching the galactic centre, the galaxy’s rotation curve turns from flat to solid body and the inward transport slows down, leading to a buildup of gas. This is predicted to occur at

Galactocentric radii approaching ~ 100 pc in the Milky Way (Krumholz & Kruijssen 2015). These different transport mechanisms may not be mutually exclusive and may both operate in the same galaxy with varying influences at different galactocentric radii (Kruijssen 2017).

With the detailed kinematic information above, it may be possible to test predictions of different gas transport mechanisms. For example, we note that the observed trend of increasing velocity dispersion towards a (projected) Galactocentric radius of ~ 150 pc is qualitatively similar to that predicted by the acoustic instability model of Krumholz & Kruijssen (2015) for the Milky Way. Further detailed comparisons with predictions from these and other models/simulations (Emsellem et al. 2015; Ridley et al. 2017) which can also be tuned to match conditions in the centre of the Milky Way, will help explain the origin of the observed kinematic features, and ultimately what determines the long-term mass flows and energy cycles in the Galactic Centre.

6 CONCLUSIONS

We have described the automated spectral-line fitting pipelines developed to determine the properties of spectral-line emission for HOPS data cubes. We then used this to determine the characteristic molecular gas properties in the HOPS sample from the NH_3 emission.

We find that HOPS NH_3 sources in the disc of the Milky Way associated with methanol and/or water maser emission are warmer and have larger line widths than NH_3 sources with no maser emission. We conclude the HOPS NH_3 -only sources in the disc represent an interesting sample of gas clouds at the earliest evolutionary phases of high-mass star formation.

Our search to find YMC progenitor candidate clouds using the HOPS data has proved inconclusive. The main limiting factor in determining whether or not most of the sources are genuine YMC progenitor candidates is the uncertainty in the distance. The most promising candidates are G330.881 -0.371 , G338.464 $+0.034$ and G350.170 $+0.070$. If these do lie at the far kinematic distance, and all the gas is physically associated, the NH_3 (1,1) velocity structure suggests the magnitude of the gas motion is sufficient to bring the mass to a radius of < 1 pc in under 1 Myr. However, the major caveat for this to occur is that these gas flows must be convergent. Further analysis of these clouds will form the basis of a subsequent paper.

Regardless of whether these turn out to be YMC progenitor clouds or not, one thing is clear – all the potential candidates we found are already forming stars. Despite relaxing our search criteria from those in Bressert et al. (2012) to find younger sources, and despite HOPS having sufficient sensitivity and resolution to find quiescent progenitor clouds, we did not find one. We conclude that the starless phase for YMC progenitor gas clouds in the disc of the Galaxy is either non-existent, or so short it is effectively not observable given the small number of YMCs expected to be forming at any time in the Milky Way.

We used the *SCOUSE* algorithm of Henshaw et al. (2016) to fit the complex NH_3 spectra in the Galactic Centre. We confirm the findings of Henshaw et al. (2016) that there are regular velocity oscillations in the inner 100 pc gas streams. We find there are also similar oscillatory patterns in the kinematic structure of gas in the 1:3 cloud. Although the oscillation length is similar to those in the inner 100 pc, the gas in these clouds does not appear to be self-gravitating, so the origin of these features is unlikely to be related to gravitational instabilities. We are currently investigating what mechanisms may give rise to such features.

The only region which does not show oscillatory motions in the kinematic structure is the gas at $l \sim 3^\circ$, known as Clump 2 – the region with the most complicated velocity structure. Most of the coherent velocity components have a constant velocity along their full extent. However, two kinematic features have very steep velocity gradients, both rising by $\sim 50 \text{ km s}^{-1}$ over a projected length of 30 pc (assuming a distance of 8 kpc). Understanding the origin of the kinematic complexity of Clump 2 remains a challenge. The velocity dispersion and latitude extent of the dense gas as a function of longitude in the Galactic Centre qualitatively matches the predictions of Krumholz & Kruijssen (2015).

Finally, we provide the output catalogues, fit results, maps of the derived properties and all the remaining unpublished data as a resource for future studies through the HOPS website (<http://www.hops.org.au>) and online appendices.

ACKNOWLEDGEMENTS

DJB was supported by NASA contract NAS8-03060. We thank the referee, Alberto Noriega-Crespo, for a very positive review.

REFERENCES

- Bally J., Stark A. A., Wilson R. W., Henkel C., 1988, *ApJ*, 324, 223
- Bally J. et al., 2010, *ApJ*, 721, 137
- Battersby C. et al., 2011, *A&A*, 535, A128
- Battersby C., Ginsburg A., Bally J., Longmore S., Dunham M., Darling J., 2014, *ApJ*, 787, 113
- Battersby C., Bally J., Dunham M., Ginsburg A., Longmore S., Darling J., 2014, *ApJ*, 786, 116
- Bergin E. A., Maret S., van der Tak F. F. S., Alves J., Carmody S. M., Lada C. J., 2006, *ApJ*, 645, 369
- Beuther H., Walsh A. J., Longmore S. N., 2009, *ApJS*, 184, 366
- Beuther H. et al., 2016, *A&A*, 595, A32
- Bihr S. et al., 2015, *A&A*, 580, A112
- Bihr S. et al., 2016, *A&A*, 588, A97
- Breen S. L., Ellingsen S. P., Contreras Y., Green J. A., Caswell J. L., Stevens J. B., Dawson J. R., Voronkov M. A., 2013, *MNRAS*, 435, 524
- Breen S. L. et al., 2015, *MNRAS*, 450, 4109
- Bressert E., Ginsburg A., Bally J., Battersby C., Longmore S., Testi L., 2012, *ApJ*, 758, L28
- Caswell J. L., Fuller G. A., Green J. A., Avison A., 2010, *MNRAS*, 404, 1029
- Caswell J. L. et al., 2011, *MNRAS*, 417, 1964
- Churchwell E. et al., 2009, *PASP*, 121, 213
- Contreras Y., Rathborne J. M., Guzman A., Jackson J., Whitaker S., Sanhueza P., Foster J., 2017, *MNRAS*, 466, 340
- Danby G., Flower D. R., Valiron P., Schilke P., Walmsley C. M., 1988, *MNRAS*, 235, 229
- Dunham M. K., Rosolowsky E., Evans II N. J., Cyganowski C., Urquhart J. S., 2011, *ApJ*, 741, 110
- Emsellem E., Renaud F., Bournaud F., Elmegreen B., Combes F., Gabor J. M., 2015, *MNRAS*, 446, 2468
- Evans II N. J., 1999, *ARA&A*, 37, 311
- Freeman P., Doe S., Siemiginowska A., 2001, in Starck J.-L., Murtagh F.D. eds, *Proc. SPIE Conf. Ser. Vol. 4477, Sherpa: A Mission-Independent Data Analysis Application*. SPIE, Bellingham, p. 76
- Ginsburg A., Bressert E., Bally J., Battersby C., 2012, *ApJ*, 758, L29
- Ginsburg A. et al., 2016, *A&A*, 595, A27
- Ginsburg A. et al., 2016, *A&A*, 586, A50
- Green J. A. et al., 2010, *MNRAS*, 409, 913
- Green J. A. et al., 2012, *MNRAS*, 420, 3108
- Henshaw J. D. et al., 2016, *MNRAS*, 463, 146
- Henshaw J. D., Longmore S. N., Kruijssen J. M. D., Davies B., Bally J., Barnes A., Battersby C., 2016, *MNRAS*, 457, 2675

- Henshaw J. D., Longmore S. N., Kruijssen J. M. D., 2016, *MNRAS*, 463, L122
- Henshaw J. D. et al., 2017, *MNRAS*, 464, L31
- Hill T., Longmore S. N., Pinte C., Cunningham M. R., Burton M. G., Minier V., 2010, *MNRAS*, 402, 2682
- Ho P. T. P., Townes C. H., 1983, *ARA&A*, 21, 239
- Jackson J. M. et al., 2013, *PASA*, 30, e057
- Johnston K. G., Beuther H., Linz H., Schmiedeke A., Ragan S. E., Henning T., 2014, *A&A*, 568, A56
- Jones P. A. et al., 2012, *MNRAS*, 419, 2961
- Jordan C. H. et al., 2015, *MNRAS*, 448, 2344
- Kauffmann J., Pillai T., Zhang Q., 2013, *ApJ*, 765, L35
- Kruijssen J. M. D., 2017, in Crocker R. M., Longmore S. N., Bicknell G. V., eds, *Proc. IAU Symp. 322: The Multi-Messenger Astrophysics of the Galactic Centre, Towards A Multi-scale Understanding of the Gas-star Formation Cycle in the Central Molecular Zone*. Cambridge Univ. Press, Cambridge, UK, p. 64
- Kruijssen J. M. D., Longmore S. N., 2013, *MNRAS*, 435, 2598
- Kruijssen J. M. D., Maschberger T., Moeckel N., Clarke C. J., Bastian N., Bonnell I. A., 2012, *MNRAS*, 419, 841
- Kruijssen J. M. D., Longmore S. N., Elmegreen B. G., Murray N., Bally J., Testi L., Kennicutt R. C., 2014, *MNRAS*, 440, 3370
- Kruijssen J. M. D., Dale J. E., Longmore S. N., 2015, *MNRAS*, 447, 1059
- Krumholz M. R., Kruijssen J. M. D., 2015, *MNRAS*, 453, 739
- Krumholz M. R., Kruijssen J. M. D., Crocker R. M., 2017, *MNRAS*, 466, 1213
- Longmore S. N., Burton M. G., Minier V., Walsh A. J., 2006, *MNRAS*, 369, 1196
- Longmore S. N., Burton M. G., Barnes P. J., Wong T., Purcell C. R., Ott J., 2007, *MNRAS*, 379, 535
- Longmore S. N., Pillai T., Keto E., Zhang Q., Qiu K., 2011, *ApJ*, 726, 97
- Longmore S. N. et al., 2012, *ApJ*, 746, 117
- Longmore S. N. et al., 2013, *MNRAS*, 433, L15
- Longmore S. N. et al., 2013, *MNRAS*, 429, 987
- Longmore S. N. et al., 2014, in Beuther H., Klessen R. S., Dullemond C. P., Henning Th. eds, *Protostars and Planets VI*, University of Arizona Press, Tucson, p. 291
- Lu X., Zhang Q., Kauffmann J., Pillai T., Longmore S. N., Kruijssen J. M. D., Battersby C., Gu Q., 2015, *ApJ*, 814, L18
- Lu X. et al., 2017, *ApJ*, 839, 1
- Maschberger T., Clarke C. J., Bonnell I. A., Kroupa P., 2010, *MNRAS*, 404, 1061
- Minier V., Ellingsen S. P., Norris R. P., Booth R. S., 2003, *A&A*, 403, 1095
- Molinari S. et al., 2010, *A&A*, 518, L100
- Molinari S., Bally J., Noriega-Crespo A., Compiègne M., Bernard J. P., Paradis D., Martin P., Testi L., 2011, *ApJ*, 735, L33
- Molinari S. et al., 2014, in Beuther H., Klessen R. S., Dullemond C. P., Henning Th. eds, *Protostars and Planets VI*, University of Arizona Press, Tucson, p. 125
- Montenegro L. E., Yuan C., Elmegreen B. G., 1999, *ApJ*, 520, 592
- Morris M., Serabyn E., 1996, *ARA&A*, 34, 645
- Ott J., Weiß A., Staveley-Smith L., Henkel C., Meier D. S., 2014, *ApJ*, 785, 55
- Parker R. J., 2014, *MNRAS*, 445, 4037
- Pillai T., Wyrowski F., Carey S. J., Menten K. M., 2006, *A&A*, 450, 569
- Portegies Zwart S. F., McMillan S. L. W., Gieles M., 2010, *ARA&A*, 48, 431
- Purcell C. R., Longmore S. N., Walsh A. J., Whiting M. T., Breen S. L., Britton T., Brooks K. J., 2012, *MNRAS*, 426, 1972
- Ragan S. E., Bergin E. A., Wilner D., 2011, *ApJ*, 736, 163
- Rathborne J. M. et al., 2014, *ApJ*, 786, 140
- Rathborne J. M. et al., 2014, *ApJ*, 795, L25
- Rathborne J. M. et al., 2015, *ApJ*, 802, 125
- Rathborne J. M. et al., 2016, *PASA*, 33, e030
- Refsdal B. et al., 2007, in Shaw R. A., Hill F., Bell D. J. eds, *ASP Conf. Ser. Vol. 376, Astronomical Data Analysis Software and Systems XVI, CIAO 4 Preview: Sherpa and ChIPS Demo*. Astron. Soc. Pac., San Francisco, p. 711
- Reid M. J. et al., 2014, *ApJ*, 783, 130
- Ridley M. G. L., Sormani M. C., Treß R. G., Magorrian J., Klessen R. S., 2017, *MNRAS*, 469, 2251
- Rigby A. J. et al., 2016, *MNRAS*, 456, 2885
- Rydbeck O. E. H., Sume A., Hjalmarson A., Ellder J., Ronnang B. O., Kollberg E., 1977, *ApJ*, 215, L35
- Schuller F. et al., 2009, *A&A*, 504, 415
- Shetty R., Beaumont C. N., Burton M. G., Kelly B. C., Klessen R. S., 2012, *MNRAS*, 425, 720
- Smith R. J., Longmore S., Bonnell I., 2009, *MNRAS*, 400, 1775
- Sofue Y., 1995, *PASJ*, 47, 527
- Tafalla M., Myers P. C., Caselli P., Walmsley C. M., 2004, *A&A*, 416, 191
- Townes C. H., Schawlow A. L., 1955, *Microwave Spectroscopy*. McGraw-Hill, New York
- Ungerechts H., Winnewisser G., Walmsley C. M., 1986, *A&A*, 157, 207
- Urquhart J. S. et al., 2011, *MNRAS*, 418, 1689
- Urquhart J. S. et al., 2013, *MNRAS*, 435, 400
- Urquhart J. S., Figura C. C., Moore T. J. T., Hoare M. G., Lumsden S. L., Mottram J. C., Thompson M. A., Oudmaijer R. D., 2014, *MNRAS*, 437, 1791
- Urquhart J. S. et al., 2015, *MNRAS*, 452, 4029
- Walker D. L., Longmore S. N., Bastian N., Kruijssen J. M. D., Rathborne J. M., Jackson J. M., Foster J. B., Contreras Y., 2015, *MNRAS*, 449, 715
- Walker D. L., Longmore S. N., Bastian N., Kruijssen J. M. D., Rathborne J. M., Galván-Madrid R., Liu H. B., 2016, *MNRAS*, 457, 4536
- Walsh A. J., Lo N., Burton M. G., White G. L., Purcell C. R., Longmore S. N., Phillips C. J., Brooks K. J., 2008, *Publ. Astron. Soc. Aust.*, 25, 105
- Walsh A. J., Breen S. L., Britton T., Brooks K. J., Burton M. G., Cunningham M. R., Green J. A., 2011, *MNRAS*, 416, 1764
- Walsh A. J., Purcell C. R., Longmore S. N., Breen S. L., Green J. A., Harvey-Smith L., Jordan C. H., Macpherson C., 2014, *MNRAS*, 442, 2240
- Wienen M., Wyrowski F., Schuller F., Menten K. M., Walmsley C. M., Bronfman L., Motte F., 2012, *A&A*, 544, A146
- Wright N. J., Parker R. J., Goodwin S. P., Drake J. J., 2014, *MNRAS*, 438, 639

SUPPORTING INFORMATION

Supplementary data are available at [MNRAS](#) online.

APPENDIX B: ONLINE TABLES

APPENDIX C: ONLINE FIGURES

Please note: Oxford University Press is not responsible for the content or functionality of any supporting materials supplied by the authors. Any queries (other than missing material) should be directed to the corresponding author for the article.

APPENDIX A: ADDITIONAL HOPS DATA

Here, we make available the remaining HOPS data cubes. In [Paper II](#), we described the procedure we used to measure the S/N of the NH_3 (1,1) and (2,2) data cubes and provided maps of the peak S/N ratio. In [Figs A1–A4](#) we show similar maps illustrating the spatial extent of the NH_3 (3,3), NH_3 (6,6), HC_3N and $\text{H69}\alpha$ emission³ detected across the 100 deg² of the survey.

NH_3 (3,3), NH_3 (6,6) and HC_3N emission traces reservoirs of dense molecular gas. The maps of these transitions ([Figs A1–A3](#)) are dominated by emission within $|l| < 4^\circ$, corresponding to gas in the inner few hundred parsecs of the Galaxy (the CMZ). As noted by Longmore et al. (2013), the $\text{H69}\alpha$ emission, which predominantly traces young H II regions, is much more uniformly distributed. This intriguing lack of correspondence between the large dense gas

³ Note the $\text{H69}\alpha$ map is the same data as published in fig. 1 of Longmore et al. (2013).

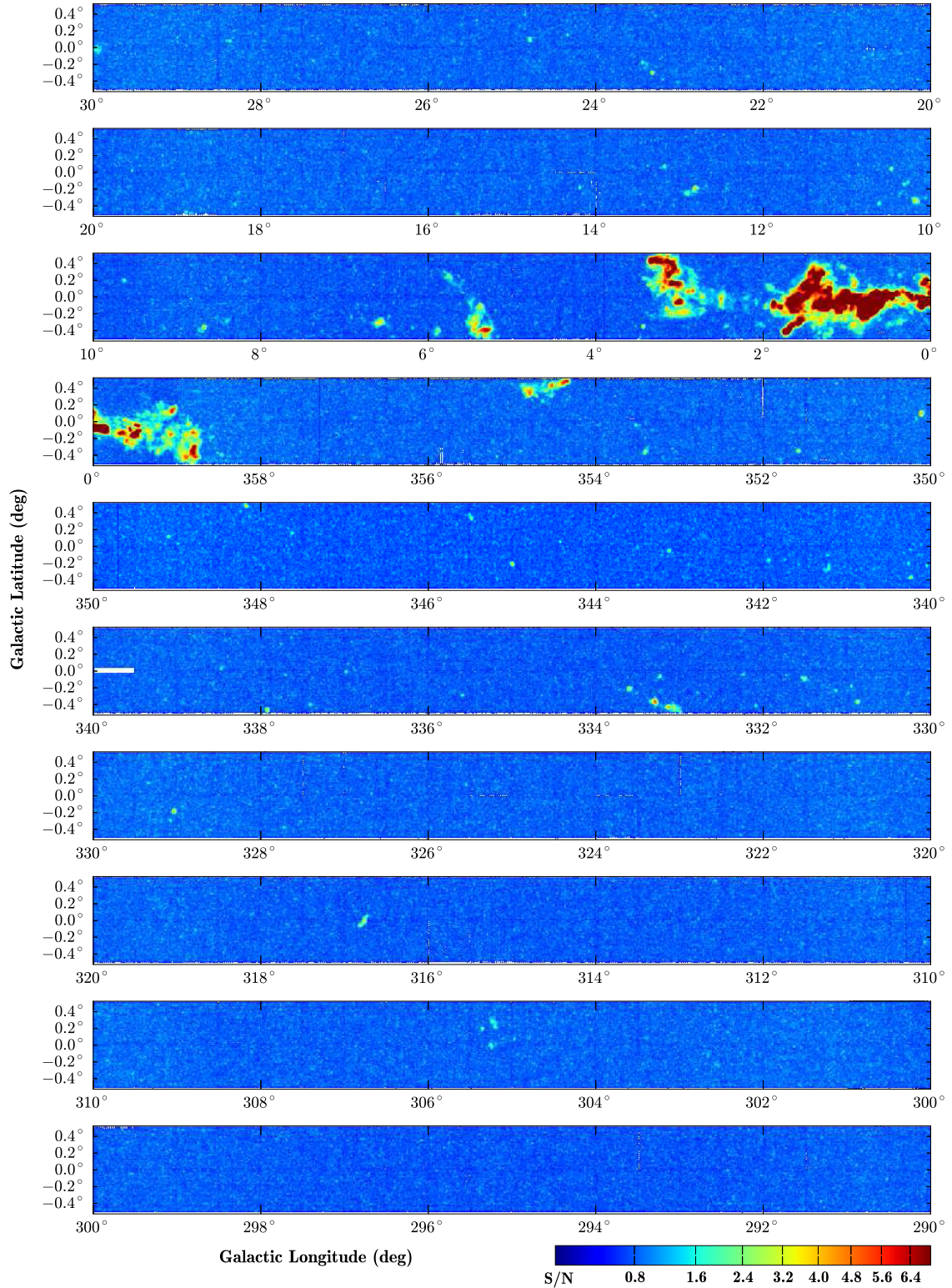


Figure A1. S/N map of the HOPS $\text{NH}_3(3,3)$ emission across the 100 deg^2 of the survey. The colour bar in the bottom right corner provides the conversion of colour in the map to S/N (see [Paper II](#) for details of the S/N calculation).

reservoir and star formation activity tracers in the CMZ, and the implications of this for our understanding of star formation in other environments, is currently under active investigation (Longmore et al. 2013; Kruijssen et al. 2014; Krumholz & Kruijssen 2015; Krumholz et al. 2017).

While the $\text{NH}_3(6,6)$ emission is only seen towards the CMZ, the $\text{NH}_3(3,3)$ and HC_3N emission is detected at many other locations throughout the inner Galaxy, sometime coincident with $\text{H69}\alpha$ emission. Further inspection shows these locations are sites of well-known, bright star formation regions.

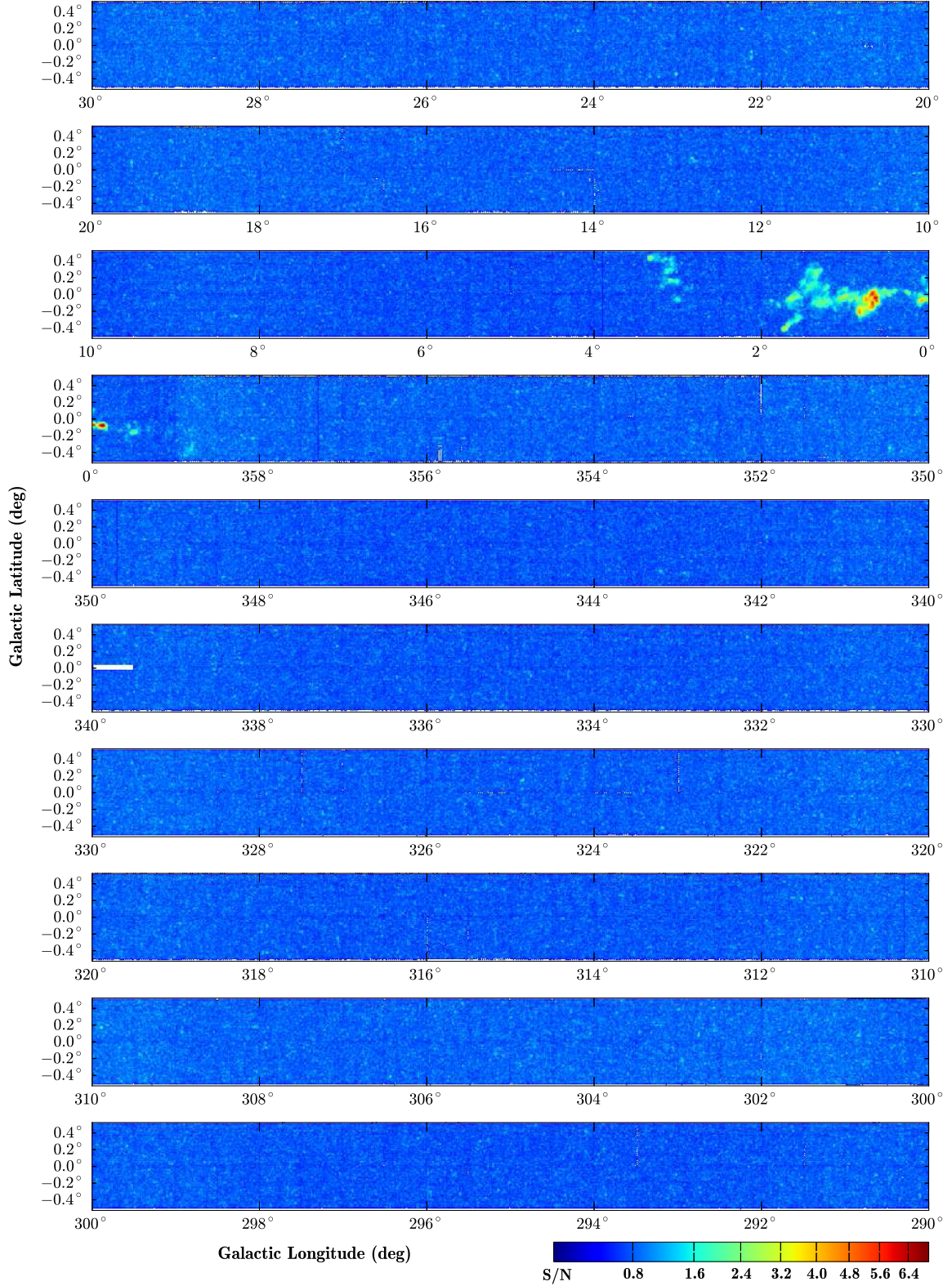


Figure A2. S/N map of the HOPS $\text{NH}_3(6,6)$ emission across the 100 deg² of the survey. The colour bar in the bottom right corner provides the conversion of colour in the map to S/N (see Paper II for details of the S/N calculation).

In addition to the H_2O masers (presented in Walsh et al. 2008, 2011, 2014), the $\text{NH}_3(1,1)$ and $\text{NH}_3(2,2)$ data (presented in Paper II), and the $\text{NH}_3(3,3)$, $\text{NH}_3(6,6)$, HC_3N and $\text{H69}\alpha$ data presented above, HOPS also detected emission from several CH_3OH tran-

sitions, CS, $\text{NH}_3(2,1)$ and the $\text{H65}\alpha$ and $\text{H62}\alpha$ radio recombination lines. However, emission from the CH_3OH , CS and $\text{NH}_3(2,1)$ transitions is only detected towards a small number of regions – Sgr B2, the $l = 2^\circ$ cloud complex, and the G305 star formation

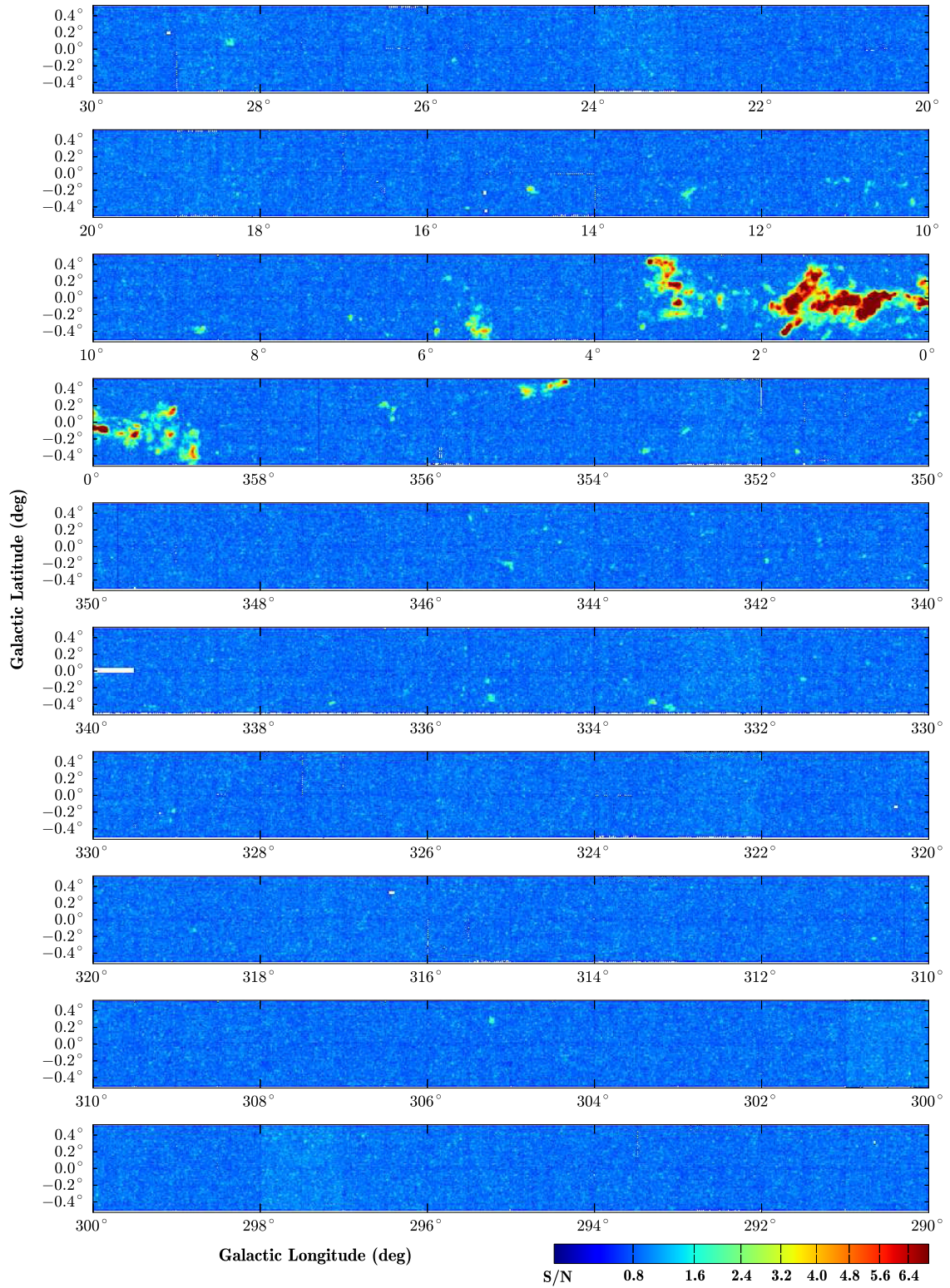


Figure A3. S/N map of the HOPS HC₃N emission across the 100 deg² of the survey. The colour bar in the bottom right corner provides the conversion of colour in the map to S/N (see [Paper II](#) for details of the S/N calculation).

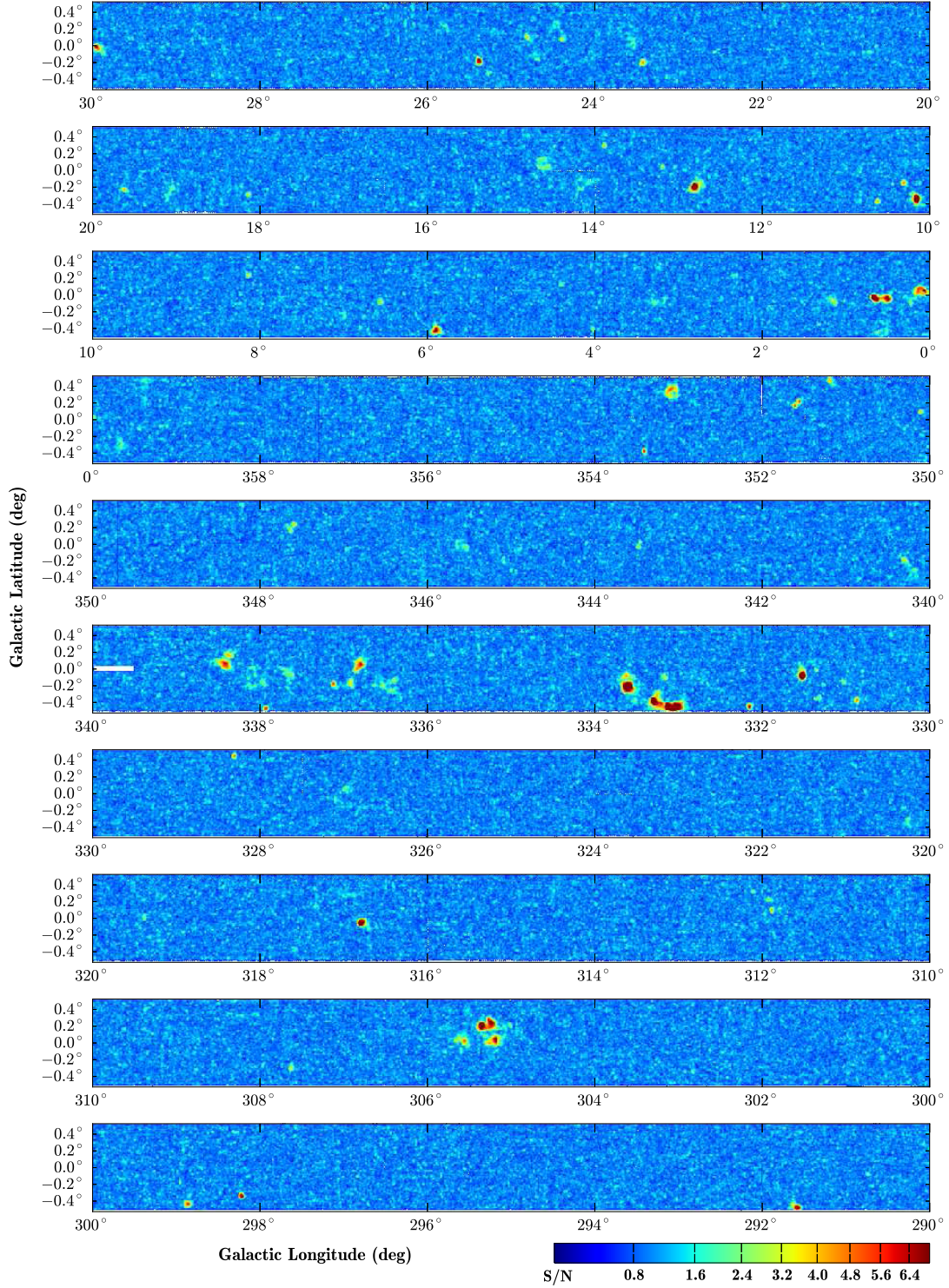


Figure A4. S/N map of the HOPS H69 α emission across the 100 deg² of the survey. The colour bar in the bottom right corner provides the conversion of colour in the map to S/N (see Paper II for details of the S/N calculation).

complex. The other recombination lines show a similar spatial extent as the H69 α emission, but suffer from interference and other imaging artefacts.

We have made all this data, and the fits results described above, available to the community through the HOPS website – <http://www.hops.org.au>.

APPENDIX B: ONLINE TABLES

The full versions of Tables B1 and B2 are given below. The full catalogue is also provided in machine-readable format as a fits file named ‘HOPS_Paper_III_catalogue.fits’. This was generated within TOPCAT (<http://www.star.bris.ac.uk/~mbt/topcat/>). Values in columns 1–39 are those that were generated in the catalogue from

Table B1. Output from the automated spectral-line fitting procedure described in Section 2. Columns 1 and 2 give the Galactic longitude and latitude of the region taken from the source name in [Paper II](#). Columns 3–11 list the best-fitting NH_3 (1,1) and NH_3 (2,2) parameters at the peak pixel towards each region. For each transition, T_{B} is the peak brightness temperature of the main component, V_{LSR} is the line-centre velocity and ΔV is the line width. Columns 6 and 7 show the opacity and excitation temperature of the NH_3 (1,1) transition. The subscript ‘m’ denotes the main hyperfine component. Column 8 shows the NH_3 (2,2) integrated intensity. A dash denotes no reliable fit was obtained for that parameter. The full versions of Table B1 is available online.

l ($^\circ$)	b ($^\circ$)	$T_{\text{B,m}}^{11}$ (K)	V_{LSR}^{11} (km s^{-1})	ΔV^{11} (km s^{-1})	τ_m^{11}	T_{ex}^{11} (K)	$\int T_{\text{B}}^{22} dV$ (K km s^{-1})	V_{LSR}^{22} (km s^{-1})	ΔV^{22} (km s^{-1})	T_{B}^{22} (K)
0.223	−0.473	2.87 ± 0.39	16.90 ± 0.07	1.96 ± 0.15	1.65 ± 0.49	4.46	0.65 ± 0.20	16.71 ± 0.17	1.08 ± 0.40	0.57
0.238	−0.189	0.74 ± 0.61	76.60 ± 1.55	6.75 ± 3.78	3.37 ± 3.81	2.94	2.05 ± 0.45	79.13 ± 0.75	6.34 ± 1.39	0.30
0.507	−0.321	0.31 ± 0.07	-64.00 ± 0.85	6.69 ± 1.40	0.10 ± 2.74	5.83	2.47 ± 0.69	-64.48 ± 3.40	24.64 ± 7.92	0.09
0.658	−0.213	0.51 ± 0.37	-50.00 ± 0.67	2.60 ± 1.28	1.27 ± 3.13	3.13	0.44 ± 0.16	-59.87 ± 0.22	1.20 ± 0.47	0.35
0.860	−0.067	11.30 ± 1.13	12.80 ± 0.26	15.00 ± 0.90	1.92 ± 0.25	8.61	126.40 ± 2.11	12.67 ± 0.25	31.51 ± 0.64	3.77
0.970	0.065	0.58 ± 0.61	-40.60 ± 0.39	1.58 ± 0.62	0.63 ± 5.14	3.66	0.56 ± 0.16	-23.85 ± 0.20	1.14 ± 0.34	0.46
1.017	−0.242	1.25 ± 0.30	-0.51 ± 0.21	3.46 ± 0.50	1.34 ± 0.77	3.66	-1.07 ± 0.45	11.39 ± 0.43	11.42 ± 3.82	−0.09
1.046	0.346	0.25 ± 0.04	170.00 ± 1.27	17.50 ± 2.38	0.10 ± 0.28	5.21	4.85 ± 1.14	170.82 ± 1.69	20.56 ± 8.04	0.22
1.096	0.055	0.65 ± 0.20	-31.80 ± 0.15	1.00 ± 0.41	0.10 ± 1.06	9.26	1.20 ± 0.46	-37.20 ± 0.53	8.71 ± 3.38	0.13
1.167	0.097	0.38 ± 0.12	37.80 ± 0.22	1.52 ± 0.56	0.10 ± 0.74	6.54	0.50 ± 0.23	55.55 ± 0.71	2.23 ± 1.34	0.21

Table B2. Derived gas properties for sources with robust NH_3 (1,1) and NH_3 (2,2) detections (see Section 3). The rotational temperature, total NH_3 column density, kinetic temperature and the non-thermal and thermal contributions to the line width are listed in columns 3–7, respectively, for the peak NH_3 (1,1) pixel. The full versions of Table B2 is available online.

l ($^\circ$)	b ($^\circ$)	T_{rot} (K)	$N_{\text{NH}_3}^{\text{rot}}$ (10^{14}cm^{-2})	T_{kin} (K)	ΔV_{nt} (km s^{-1})	ΔV_{th} (km s^{-1})
29.9386	−0.03095	19	1.69	22	3.13	0.24
27.77443	0.06791	21	0.69	26	2.37	0.26
27.27837	0.15187	42	0.45	93	2.32	0.50
24.78522	0.09488	17	2.22	20	3.58	0.23
24.47508	0.47827	34	0.33	59	3.04	0.39
24.42476	−0.21978	19	1.86	23	3.27	0.25
18.85464	−0.47798	19	1.15	23	2.7	0.24
14.70352	−0.1744	16	0.83	18	1.43	0.22
14.21368	−0.48907	27	0.33	38	0.7	0.32
14.21031	−0.18499	18	1.35	22	2.49	0.24

[Paper II](#). See that paper for details. Columns 41–56 give the output for the CLASS fit results. Columns 57–65 give the output from the SHERPA fit results. In both cases, the abbreviations T_{B} , v_{lsr} , fwhm and τ stand for the brightness temperature, LSR velocity, full width at half-maximum and optical depth at the peak emission, respectively. The abbreviations ‘11’ and ‘22’ denote the NH_3 (1,1) and (2,2) transitions, respectively. For the CLASS results, the abbreviation ‘err’ denote that value refers to the uncertainty in the corresponding parameter. For the SHERPA fit results, the abbreviations ‘m’, ‘ex’ and ‘rms’ denote the main hyperfine component of the inversion transition, the excitation temperature and residual rms noise level for that transition. Columns 67–71 give the values in columns 2–6 of

Table B2. The remaining columns are numbers derived from combinations of values in preceding columns as given in the ‘Description’ value of that column.

APPENDIX C: ONLINE FIGURES

The full version of Fig. 2 is given in the file ‘all_sherpa_maps.pdf’. The figures showing the output of the SHERPA fit spectra results are given in the file ‘all_sherpa_spectra_fig.pdf’.

This paper has been typeset from a \LaTeX file prepared by the author.