

Yang, W, Zhang, X, Ma, H and Zhang, G

Laser beams-based localization methods for Boom-type roadheader using underground camera non-uniform blur model

<http://researchonline.ljmu.ac.uk/id/eprint/13889/>

Article

Citation (please note it is advisable to refer to the publisher's version if you intend to cite from this work)

Yang, W, Zhang, X, Ma, H and Zhang, G (2020) Laser beams-based localization methods for Boom-type roadheader using underground camera non-uniform blur model. IEEE Access. ISSN 2169-3536

LJMU has developed **LJMU Research Online** for users to access the research output of the University more effectively. Copyright © and Moral Rights for the papers on this site are retained by the individual authors and/or other copyright owners. Users may download and/or print one copy of any article(s) in LJMU Research Online to facilitate their private study or for non-commercial research. You may not engage in further distribution of the material or use it for any profit-making activities or any commercial gain.

The version presented here may differ from the published version or from the version of the record. Please see the repository URL above for details on accessing the published version and note that access may require a subscription.

For more information please contact researchonline@ljmu.ac.uk

Date of publication xxxx 00, 0000, date of current version xxxx 00, 0000.

Digital Object Identifier 10.1109/ACCESS.2017.Doi Number

Laser beams-based localization methods for Boom-type roadheader using underground camera non-uniform blur model

Wenjuan Yang^{1,2}, Xuhui Zhang^{1,2}, Member, IEEE, Hongwei Ma^{1,2}, and Guangming Zhang^{2,3}

¹ School of Mechanical Engineering, Xi'an University of Science and Technology, No.58, Mid-Yanta Road, Xi'an 710054, China

² Shaanxi Key Laboratory of Mine Electromechanical Equipment Intelligent Monitoring in Shaanxi, No.58, Yanta Road, Xi'an 710054, China

³ General Engineering Research Institute, Faculty of Engineering and Technology, Liverpool John Moores University, Liverpool, L3 3AF, UK

Corresponding author: Xuhui Zhang(e-mail: zhangxh@xust.edu.cn), Wenjuan Yang(e-mail: 1805909145@qq.com).

This work was supported by the National Natural Science Funds of China under Grant No.51974228, Shaanxi Innovative Talent Plan Project under Grant No.2018TD-032, and Key R & D project in Shaanxi under Grant No.2018ZDCXL-GY-06-04.

ABSTRACT The efficiency of automatic underground tunneling is significantly depends on the localization accuracy and reliable for the Boom-type roadheader. In comparison with other underground equipment positioning methods, vision-based measurement has gained attention for its advantages of non-contact and no accumulated error. However, the harsh underground environment, especially the geometric errors brought by the vibration of the machine body to the underground camera model, has a certain influence on the accuracy and stability for the vision-based underground localization. In this paper, a laser beams-based localization methods for the machine body of Boom-type roadheader is presented, which can tackle the dense-dust, low illumination environment with the stray lights interference. Taking mining vibration into consideration, an underground camera non-uniform blur model that incorporate the two-layer glasses refraction effect was established to eliminate vibration errors. The blur model explicitly reveals the change of imaging optical path under the influence of vibration and double layer explosion-proof glass. On the basis of this, the underground laser beams extraction and positioning are presents, which is with well environmental adaptability, and the improved 2P3L (two-points-three-lines) localization model from line correspondences are developed. Experimental evaluation are designed to verify the performance of the proposed method, and the deblurring algorithm is investigated and evaluated. The results show that the proposed methods is effective to restore the blurred laser beams image that caused by the vibration, and can meet the precision need of roadheader body localization for roadway construction in coal mine.

INDEX TERMS Laser beams; Pose estimation; Vision measurement; Underground camera; Non-uniform blur model; Deblurring algorithm; Boom-type roadheader

I. INTRODUCTION

The intelligent localization of coal mine roadway tunneling is facing severe challenges. Accurate self-localization of cutting path is of key importance to the improvement of the excavation efficiency in tunnel process [1, 2]. However, the long-distance accurate positioning of Boom-type roadheader is still an unresolved problem which makes it impossible to track the cutting trajectory accurately. The tunneling roadway located at underground and with no global positioning system (GPS) signals. Therefore, the conventional global positioning system measurement method is invalid. Inertial navigation system (INS) is an infrastructure independent pose estimation method. However, there exists accumulated

drift due to the double integration, which could result in serious inaccuracy positioning [3, 4, 5]. The Ultra Wideband (UWB) system has a certain positioning accuracy in personnel positioning [6, 7]. However, it has a high requirement for the antenna sensitivity when the distance increase between the UWB stations and the object during measurement process. Laser based methods [8, 9, 10] can have a high pose estimation results when with accurate dense 3D point clouds. However, it have a very high requirement for the 3D laser scanners. Therefore, there exist some deficiencies in the above approaches, an infrastructure independent sensor that with high reliability and

measurement accuracy is necessary for Boom-type roadheader body automatic localization.

In recent years, vision-based pose estimation methods have received great attention for the non-contact and no accumulated error [11]. But it is difficult to long-distance track the scene feature in the dense-dust and low illuminance environment. We have used multi-points infrared LED target to achieve the pose measurement of the cutting-head [12], but the body pose of Boom-type roadheader is the basis of the cutting trajectory tracking. The mine laser pointer usually used for long distance directional heading, which can produce a laser beam. Considering the advantages of the higher extraction accuracy and the stronger anti-occlusion ability, the laser beams is expected to be taken as a target to achieve greater accuracy in pose measurements. The pose estimation from line correspondences involves iterative solutions and closed-form solutions. For iterative solutions, Iterative approach [13, 14, 15, 16] are usually time-consuming. For closed-form solutions, [17, 18] proposed an 8th-degree polynomial to the 3-D object pose estimation problems from three lines in general position, which is based on the perspective projection of linear ridges and form the closed-form solutions of object pose. [19] presented a biquadratic polynomial for the case of three non-coplanar lines. However, these pose estimation approaches from three lines exist multi-solutions or the complex iteration solution process.

Due to the motion and vibration of the Boom-type roadheader in coal mining, the pixel points in the laser beams image will continuously move across the image plane during exposure and form a blurred laser beams image. This blurring effect increases feature location errors and degrades pose estimation accuracy. Some existing deblurring methods describe the blurry image as the convolution of an unobserved latent image with a uniform blur kernel. However, camera shake motions can cause spatially varying blur, which often resulting in a non-uniform blur kernel across the image. Levin et al. [20] show that spatial invariance is often violated and the spatially varying blur kernels is quite common. The blurred image can be regarded as the integration of a sharp image under a sequence of projective transformation matrix that describe the camera's shake path during exposure [21], a hybrid camera [22] or inertial measurement sensors [23] can be used to recover the camera's path. Tai et al. [21] derived a projective motion blur model that incorporated spatially varying motion to restore the original sharp image. [24] developed a restoration method from a single blurred image, which described the camera motion with non-uniform blur kernels that derived from MDF. [25] proposed a variational Bayes framework to removing camera shake based on uniform blur kernel. [26] describe a similar framework where they approximated the 3-dimensional rotational camera motion with a spatially-varying blur, which was incorporated within the frameworks proposed by [25] and [27] to achieve blind deblurring.

This paper proposes a novel laser beams-based machine body localization system for the Boom-type roadheader to improve the accuracy and reliability of the body positioning in tunneling face. The main contribution of this paper are as follows: 1) A parallel laser beams-based target were specially designed to tackle the dense-dust, low illumination environment with the stray lights interference. On the basis of this, the underground laser beams segmentation, extraction and positioning algorithms are presents, which is verified to be with well environmental adaptability. 2) Taking the vibration into the consideration, an underground camera non-uniform blur model that incorporate the two-layer glasses refraction effect is established to eliminate vibration errors. The established model described explicitly the blurred process of a clear laser beam under a sequence of transformation matrix of the underground camera's path. 3) Considering the existing pose estimation algorithms from three lines involves higher-degree polynomial and the complex iteration solution process, the improved 2P3L pose estimation model enables to determine the unique closed-form solutions from line correspondences. 4) The experimental are designed to verify and evaluate the performance of the proposed underground camera blur model and the localization methods.

II. LASER BEAMS-BASED VISION MENSEARMENT SYSTEM FOR BOOM-TYPE ROADHEADER

The Boom-type roadheader carries out tunneling work in the tunnel face, the realization of the automatic localization of the cutting-head implies two aspects: the body positioning in the tunnel coordinate system and the cutting-head positioning in the body coordinate system. As shown in Fig.1a, the location system involves two artificial target: one is a specially designed laser beams-based target, which is formed by the double parallel laser alignment instruments, the other is the multi-points infrared LED target. The front underground camera is used to collect the infrared target image, the rear underground camera is used to capture the laser beams-based target image. The cutting-head positioning in the body coordinate system is realized by the infrared LEDs-based vision measurement methods. The body positioning system is realized by the laser beam-based vision measurement methods.

As shown in Fig. 1b, infrared LED-based cutting-head pose estimation chain $O_0-O_{c2}-O_{b2}-O_4$ involves four coordinate frames, the camera coordinate frame $O_{c2}X_{c2}Y_{c2}Z_{c2}$, the machine body coordinate frame $O_0X_0Y_0Z_0$, the cutting-head coordinate frame $O_4X_4Y_4Z_4$, the target coordinate frame $O_{b2}X_{b2}Y_{b2}Z_{b2}$, which have been given illustration in our previous work [12]. This paper we focus on the Boom-type roadheader body positioning in the tunnel coordinate system. As shown in Fig.1b, laser beam-based roadheader body pose estimation chain $O_0-O_{c1}-O_{b1}-O_h$ involves four coordinate frames, the camera coordinate frame $O_{c1}X_{c1}Y_{c1}Z_{c1}$, the machine body coordinate frame $O_0X_0Y_0Z_0$, the target

coordinate frame $O_{b1}X_{b1}Y_{b1}Z_{b1}$, and the tunnel coordinate frame $O_hX_hY_hZ_h$.

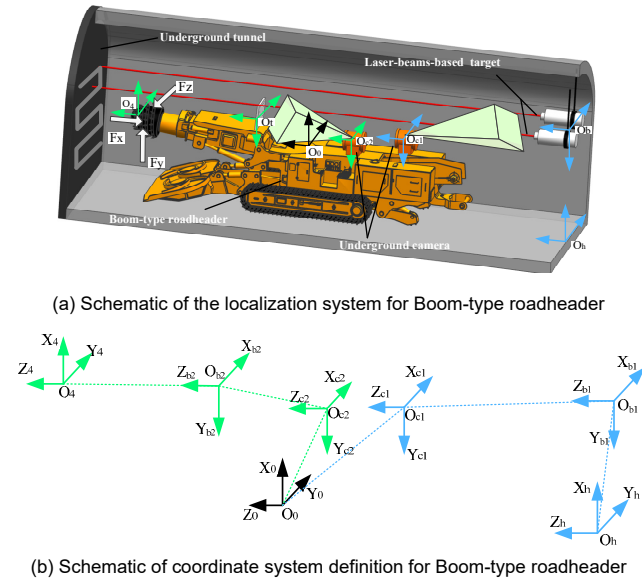


FIGURE 1. Schematic of Boom-type roadheader localization system.

Vision-based Boom-type roadheader body localization in the tunnel coordinate system is performed with

$$\mathbf{M}_0^h = \mathbf{M}_0^c \mathbf{M}_c^b \mathbf{M}_b^h \quad (1)$$

Where, \mathbf{M}_0^c denotes the transformation matrix between the body and camera coordinate system, \mathbf{M}_c^b expresses the transformation matrix between the camera and target coordinate system, \mathbf{M}_b^h denotes the transformation matrix between the body and the tunnel roadway coordinate system.

The rigid transformation matrix of \mathbf{M}_0^c and \mathbf{M}_b^h can be obtained by pre-calibrated. This paper we focus on the laser beams-based vision measurement methods to obtain \mathbf{M}_c^b , which is illustrated in Section IV. As described in our previous work [12], the underground camera is specially designed with two-layer explosion-proof and an underground camera model that considered the two-layer glasses refractive effect has been developed. However, the geometric errors brought by the roadheader's motion and vibration to the geometric model of underground camera needs to be furtherly considered for the practical situation. Hence, a non-uniform underground camera non-uniform blur model that incorporated two-layer glasses refraction effect is proposed this paper, which is illustrated in Section III.

III UNDERGROUND CAMERA BLUR MODELING AND DEBLURING

A. UNDERGROUND CAMERA BLUR MODELING THAT INCORPORATED REFRACTION EFFECT

Considering the explosion-proof and dust removal in the tunnel face, an underground camera was specially designed as shown in Fig. 2. Due to the light-path will change when pass through two layer glasses, the underground camera's

projective model differs significantly from the pinhole camera model. With the Boom-type roadheader's motion and vibration in coal mining, the relative pose between the underground camera and the laser beam-based target will changed. The pixel points in the laser beams target images will continuously move across the image plane during exposure and form a blurred laser beams target image. The blur effect can lead to laser beams extraction and positioning errors, which degrades roadheader body localization accuracy.

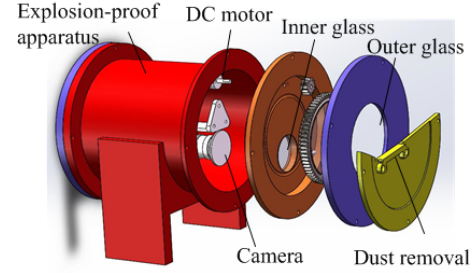


FIGURE 2. Explosion-proof camera with two-layer glasses.

For the perspective camera model, the blurry image can be generally modeled as a sum of the projective transformations of the sharp image in the exposure time. The projective transformations can be defined by the homographies as follows

$$\mathbf{H} = \mathbf{K}\mathbf{M}\mathbf{K}^{-1} \quad (2)$$

Where, \mathbf{M} is the projective transformation matrix, \mathbf{K} is the camera's internal calibration matrix.

The observed image \mathbf{g} can be formulated as an integral of \mathbf{f} after rotation and translation during exposure. \mathbf{g} can be described by the integration of all the homographies \mathbf{H}_t of \mathbf{f} over the exposure time \mathbf{T} . The blurred image \mathbf{g} can be defined as

$$\mathbf{g} = \int_0^T \mathbf{f}(\mathbf{H}_t) dt + \varepsilon \quad (3)$$

Where, \mathbf{H}_t is the homography deduced by the transformation matrix, \mathbf{T} denotes the exposure time, ε is the observation noise.

By discretization, \mathbf{g} can be estimated by

$$\mathbf{g} = \frac{1}{N} \sum_{i=1}^N \mathbf{f}(\mathbf{H}_i \mathbf{x}) + \varepsilon \quad (4)$$

Considering the refraction of the two-layer glasses, the underground camera blur model differs significantly from the above perspective camera blur model, as shown in Fig.3. In this section, we proposed an underground camera blur model that incorporate the two-layer glasses refraction. The dynamic imaging process of a blurred laser beams image is equivalent to the integration of a sharp laser beams image under a sequence of translation and rotation matrix that describe the underground camera's path.

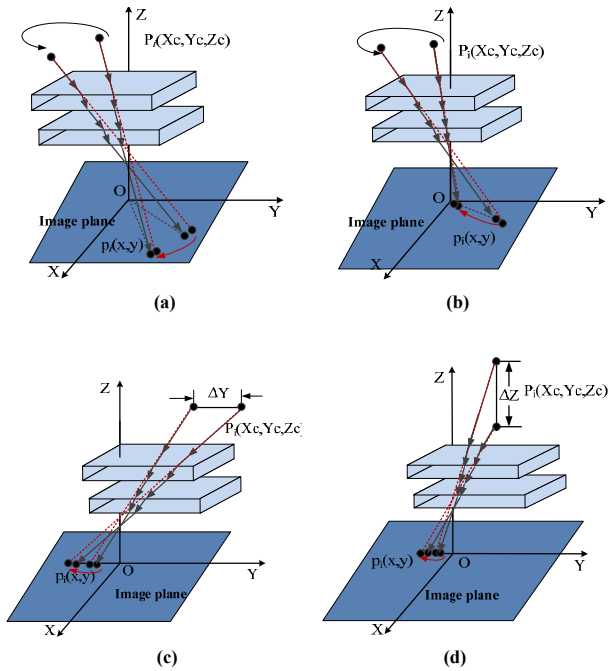


FIGURE 3. The influence of vibration on the underground camera image quality when with two-layer glasses refraction. (a) The imaging affect when 3D spatial point rotate around Z axis. (b) The imaging affect when 3D spatial point rotate around X-Y axis. (c) The imaging affect when 3D spatial point translate around Y axis. (d) The imaging affect when 3D spatial point translate around Z axis.

Assuming \mathbf{X} is the 3D space point of the laser beams in the target coordinate system, \mathbf{M} is the transformation matrix between the target and camera coordinate system, the incoming ray is $\mathbf{x}_0 = [x, y, f]$, \mathbf{M}_c^h is the rotation matrix between the camera coordinate system and virtual imaging system, ΔF is the perspective offset, s is the arbitrary scale factor. The relationship between a 3D point \mathbf{X} in the object coordinate system and its image projection \mathbf{x} in static condition can be expressed as

$$s\mathbf{M}_c^h\mathbf{x}_0 = \mathbf{M}_c^h\mathbf{M}\mathbf{X} - [0 \ 0 \ \Delta F]^T \quad (5)$$

Considering the underground camera motion and vibration during image capture, we map each pixel in the transformed image \mathbf{g} to one pixel in \mathbf{f} . Suppose that \mathbf{H}_k is a transformation matrix between the camera and target coordinate system at time t_k during exposure that describe the underground camera's motion path. There is one \mathbf{H}_k for each time slot. Assuming at time t_k , the incoming ray is $\mathbf{x}_k = [x_k, y_k, f]$, the perspective offset is ΔF_k , the arbitrary scale factor is s_k . The relationship between the 3D point \mathbf{X} in the object coordinate system and its image projection \mathbf{x}_k at time t_k can be expressed as

$$s_k\mathbf{M}_c^h\mathbf{x}_k = \mathbf{M}_c^h\mathbf{H}_k\mathbf{M}\mathbf{X} - [0 \ 0 \ \Delta F_k]^T \quad (6)$$

The pixel in the blurry image can be mapped under a homography \mathbf{H}_k to a pixel point in the sharp image as follows:

$$\begin{bmatrix} 0 \\ 0 \\ \Delta F_k \end{bmatrix} + s_k\mathbf{M}_c^h \begin{bmatrix} x_k \\ y_k \\ f \end{bmatrix} = \mathbf{M}_c^h\mathbf{H}_k(\mathbf{M}_c^h)^{-1} \begin{bmatrix} 0 \\ 0 \\ \Delta F \end{bmatrix} + s\mathbf{M}_c^h \begin{bmatrix} x \\ y \\ f \end{bmatrix} \quad (7)$$

The proposed underground camera blur model can be defined in terms of the blurred image \mathbf{g} , the sharp image \mathbf{f} and the blur kernel \mathbf{w} . Each element w_k corresponds to an underground camera's homography \mathbf{H}_k . The blurred image pixel g_i can be modeled as a weighted sum of a set of projectively transformation of p_j , which constructed a system of linear equations.

$$\begin{aligned} \mathbf{g} &= \sum_k \omega_k \mathbf{C}_k \mathbf{f} + \varepsilon \\ g_i &= \sum_k \omega_k \left(\sum_j C_{ijk} f_j \right) + \varepsilon \end{aligned} \quad (8)$$

Where \mathbf{C}_k is the coefficients matrix of bilinear interpolation corresponding to the homography \mathbf{H}_k . ε denotes noise at each pixel, and i, j and k are the index of the blurred image, the sharp image and the blur kernel, respectively.

B. NON-UNIFORM DEBLURING ALGORITHM

To tackle the deblurring problems, we apply proposed underground camera blur model within the existing deblurring frameworks [25, 26], which is based on the variational inference approach of Miskin and MacKay [27]. The variational inference approach is used to find the optimal forms of $q(f_j)$, $q(w_k)$ and $q(\beta_\sigma)$ by minimizing the following cost function, which is equivalent to minimizing the Kullback-Leibler (KL) divergence between the true posterior and the variational approximation.

$$C_{KL} = \int q(\Theta) \left[\ln \frac{q(\Theta)}{p(\Theta)} - \ln p(\mathbf{g} | \Theta) \right] d\Theta \quad (9)$$

$$q(\Theta) = q(\beta_\sigma) \prod_j q(f_j) \prod_k q(w_k) \quad (10)$$

With the bilinear form of Eq. (8) that described as follows

$$\mathbf{g} = \mathbf{A}\mathbf{f} + \varepsilon, \mathbf{A}_{ij} = \sum_k C_{ijk} w_k \quad (11)$$

$$\mathbf{g} = \mathbf{B}\mathbf{w} + \varepsilon, \mathbf{B}_{ik} = \sum_j C_{ijk} f_j \quad (12)$$

The optimal forms of $q(f_j)$, $q(w_k)$ and $q(\beta_\sigma)$ can be derived using the calculus of variations, and the parameters can then be updated with the equations as follows [26].

$$\begin{aligned} w_k^2 &= \langle \beta_\sigma \rangle \sum_{i,j} C_{ijk}^2 v_j^f + \langle \beta_\sigma \rangle \sum_i \langle B_{ik} \rangle^2 \\ w_k^1 w_k^2 &= \langle \beta_\sigma \rangle \sum_i \langle B_{ik} \rangle (g_i - \langle \hat{g}_i \rangle) - \langle \beta_\sigma \rangle \sum_{i,j} C_{ijk} \langle A_{ij} \rangle v_j^f + \langle w_k \rangle w_k^2 \\ f_j^2 &= \langle \beta_\sigma \rangle \sum_{i,k} C_{ijk}^2 v_k^w + \langle \beta_\sigma \rangle \sum_i \langle A_{ij} \rangle^2 \\ f_j^1 f_j^2 &= \langle \beta_\sigma \rangle \sum_i \langle A_{ij} \rangle (g_i - \langle \hat{g}_i \rangle) - \langle \beta_\sigma \rangle \sum_{i,k} C_{ijk} \langle B_{ik} \rangle v_k^w + \langle f_j \rangle f_j^2 \end{aligned} \quad (13)$$

where

$$\begin{aligned} v_k^w &= \langle w_k^2 \rangle - \langle w_k \rangle^2, \quad v_j^f = \langle f_j^2 \rangle - \langle f_j \rangle^2, \quad \langle A_{ij} \rangle = \sum_k C_{ijk} \langle w_k \rangle, \\ \langle B_{ik} \rangle &= \sum_j C_{ijk} \langle f_j \rangle, \quad \langle \hat{g}_i \rangle = \sum_k \left(\sum_j C_{ijk} \langle f_j \rangle \right) \langle w_k \rangle \end{aligned}$$

The parameters optimization results are given evaluated using the following equation

$$\langle (g_i - \hat{g}_i)^2 \rangle = (g_i - \langle \hat{g}_i \rangle)^2 + \sum_j \langle A_{ij} \rangle^2 v_j^f + \sum_k \langle B_{ik} \rangle^2 v_k^w + \sum_{j,k} C_{ijk}^2 v_j^f v_k^w \quad (14)$$

Once obtained the optimal $q(\Theta)$, the expectation of $q(w)$ can be regarded as the blur kernel. Then the Richardson-Lucy algorithm [21, 28] can be applied to estimate the sharp image \mathbf{f} . The latent sharp image \mathbf{f} can be estimated iteratively using the following equation.

$$\hat{\mathbf{f}} \leftarrow \hat{\mathbf{f}} \odot (\mathbf{A}^T (\mathbf{g} / \mathbf{A} \hat{\mathbf{f}})) \quad (15)$$

Where, \odot denotes the element-wise product, \mathbf{g} is the observed blurry image, the matrix \mathbf{A} can be calculated with estimated underground camera non-uniform blur kernel.

The proposed underground camera non-uniform blur modelling and deblurring algorithm can be taken as a pre-process for the Boom-type roadheader body pose estimation in the practical situation.

IV. POSE ESTIMATION

This section gives the pose estimation method including the laser beams segmentation, extraction and positing, as well as the improved pose estimation algorithms from three lines correspondences.

A. LASER BEAMS SEGMENTATION AND POSITIONING

The vision-based Boom-type roadheader location system adopts double parallel laser beams as the feature target, which is realized by two parallel mounted underground laser pointers and can tackle the coal mine environment. The underground laser pointer adopts the red laser with a wavelength of about 660 nm. Due to there exist influence factors such as stray light in the downhole working environment, the laser line and laser spot location accuracy are seriously disturbed by stray lights spot from mine lights. However, due to the wavelength of the laser beam is included in the wavelength range of the mine lights, it is impossible to filter out stray light source directly with narrow-band filter. Therefore, in order to prevent the interference of the stray lights for the laser beams positioning, an accuracy and reliable downhole laser beams image segmentation and feature positioning methods are proposed.

The process of laser beams segmentation, extraction and feature positioning are shown in Fig. 4, which includes the following three parts: laser beam segmentations and extraction, laser spot segmentations and extraction, as well as laser beams positioning.

Laser beam segmentations and extraction According to the corresponding range of HSV space components H, S and V for the red laser beams, the laser beams can be distinguished from stray lights in complex background. The range of H is set as 0~10, the range of S is set as 40~250, and the range of V is set as 40~250. As shown in Fig.4a and Fig.4b, the mine lights and other miscellaneous lights can be filtered out, and the laser beam pixels with brighter red color are allowed to pass through. In accordance with the red laser

beams cluster based on the color space, it can effectively obtain the laser beam region under the background of miscellaneous lights. Assume the i^{th} image points in the image is expressed as $I(x_i, y_i)$, the collection of the pixel points of laser beams \mathbf{L} can be defined as

$$\mathbf{L} = \{\mathbf{L}_1, \mathbf{L}_2, \dots, \mathbf{L}_i\}, \mathbf{L}_i = [x_i, y_i, I(x_i, y_i)], \text{ with}$$

$$0 < H(x_i, y_i) < 10, 40 < S(x_i, y_i) < 250, 40 < V(x_i, y_i) < 250, \quad (16)$$

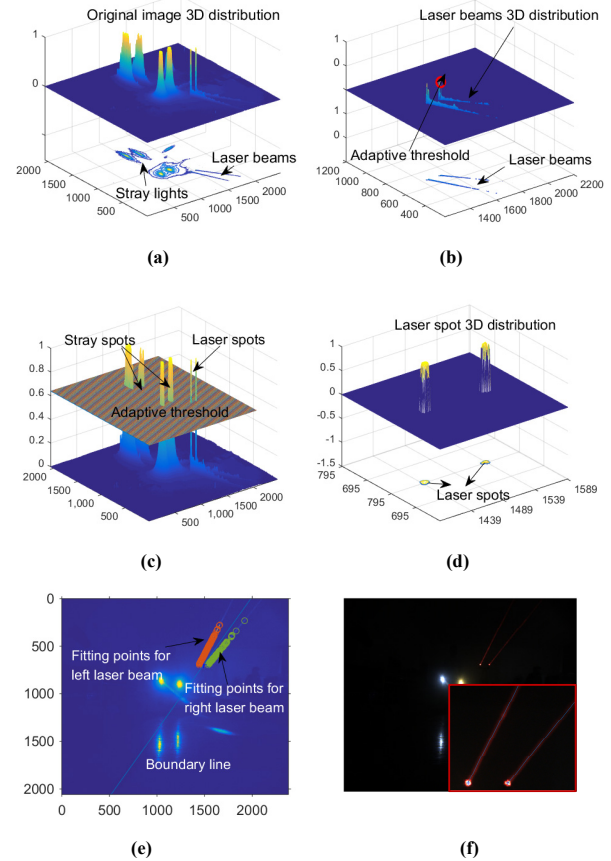


FIGURE 4 Laser beams segmentation, extraction and positioning. (a) The 3D distribution for the original laser beam image. (b) The 3D distribution of the laser beam segmentations results based on the color space components. (c) The 3D distribution of the segmentations results based on the dynamic gray threshold (d) The 3D distribution of the laser spot segmentations results based on the color space constraints and Euclidean distance constraints. (e) The obtained boundary line that used to distinguish the left laser beam and right laser beam (f). The positioning results of the laser beams.

Laser spot segmentations and extraction. With obtained laser beam segmentation results as shown in Fig.4b, the dynamic gray thresholds can be obtained by calculating the maximum gray values in the extracted laser beams in current frame image. The dynamic gray thresholds is the gray value of the pixel points that labeled by red circle in Fig.4b. With obtained adaptive gray thresholds, to calculate the binary image of current frame image with Otsu algorithm. Assume the obtained center coordinates of connected regions are C_k and its corresponding connected regions by threshold segmentation are defined as S_k . C_k is the k^{th} element in the collection C .

$$C = \{C_1, C_2, \dots, C_k\}, C_k = (x_k, y_k, I(x_k, y_k))$$

$$S_k = \{S_{k1}, S_{k2}, \dots, S_{ki}\}, S_{ki} = (x_{ki}, y_{ki}, I(x_{ki}, y_{ki})) \quad (17)$$

As shown in Fig.4c, the connected regions S_k contain not only the laser spot, but also the stray light spot. The color space constraints is defined here to filter the stray light spots. Let S'_k denotes the collection formed by the neighboring pixels in the 20×20 window of the center coordinates C_k . Assume S'_k is the collection that formed by the elements both within the collection S_k and within the collection L , N is the collection of the total numbers of the elements in the corresponding collection S'_k .

$$S' = \{S'_1, S'_2, \dots, S'_k\}, S'_k = L \cap S_k$$

$$N = (N_1, N_2, \dots, N_k) \quad (18)$$

The color space constraints $N_k > m$ is used for the laser spot segmentation where the constant m is usually set at 5. The obtained connected regions by the constraints conditions is defined as R_k , C_R is the center coordinates that corresponding to the connected regions R_k .

$$R = \{R_1, R_2, \dots, R_k\}, R_k = S_k, \text{if } (N_k > m)$$

$$C_R = \{C_{R1}, C_{R1}, \dots, C_{Rk}\} \quad (19)$$

Euclidean distance constraints is used to further confirm the laser spots, which are respectively defined by calculating the pixel distance between the extracted different connected region R_k along y-axis and x-axis. The extracted laser spots are shown in Fig.4d.

$$|C_{R(i)}(y) - C_{R(j)}(y)| < n_1,$$

$$n_2 < |C_{R(i)}(x) - C_{R(j)}(x)| < n_3 \quad (20)$$

where, n_1 , n_2 , and n_3 are set at 10, 30, and 100, respectively. i , j denotes the i^{th} and j^{th} connected regions, respectively.

Laser beams positioning: For laser spots, the classical spot location algorithms are weighted centroid method, circle fitting method and curved surface fitting method [29, 30, 31]. Gaussian fitting algorithm [31] is adopted for the laser spots center positioning. For laser beams, the typical straight line detection algorithms are the Hough transform [32, 33]. But Hough transform-based line detection approaches do not consider the line width, which are inaccuracy for the center line detection of the laser beams that are discontinuous and with varying line width. An underground laser beam center line location algorithm is proposed and introduced as follows:

Step1: A boundary line of the double laser beams that pass through the center point (x_0, y_0) of the two laser spots is first to be defined to distinguish the left laser beams and the right laser beams as shown in Fig.4e. Establish accumulator $A = \{\rho, \theta\}$, and Hough transform is used to obtain the parameters space collection of ρ and θ for the laser beams, where θ is the angle from abscissa axis to the vector which is perpendicular to the laser line, and ρ is the distance from the

origin to the laser line. The angle collections for the extracted laser beams are defined as $\theta = \{\theta_1, \theta_2, \theta_3, \dots, \theta_k\}$. Defined a vector that is normal to the boundary line, and the angle θ_0 from the defined vector to the abscissa axis is

$$\theta_0 = (\pi - \max(\theta\{\theta_1, \theta_2, \dots, \theta_k\}) - \min(\theta\{\theta_1, \theta_2, \dots, \theta_k\}))/2 \quad (21)$$

The equation for the boundary line of the double laser beams can be calculated by the center point (x_0, y_0) of the two laser spots and the obtained angle θ_0 .

Step 2: Combine with the above boundary line constraints, form the cluster $C_{\text{left}} = \{C_{Lrow1}, C_{Lrow2}, \dots, C_{Lrowk}, \dots, C_{LrowN}\}$ for the pixel points of laser beams on the left area of the boundary and the cluster $C_{\text{right}} = \{C_{Rrow1}, C_{Rrow2}, \dots, C_{Rrowk}, \dots, C_{RrowN}\}$ for the pixel points of laser beams on the right area of the boundary. C_{Lrowk} and C_{Rrowk} are the pixel points of the laser beams of the left and right area of the boundary in each row, respectively. Then, form the cluster $C_{\text{left_max}} = \{C_{Lrow1}^{\text{max}}, C_{Lrow2}^{\text{max}}, \dots, C_{Lrowk}^{\text{max}}, \dots, C_{LrowN}^{\text{max}}\}$ and the cluster $C_{\text{right_max}} = \{C_{Rrow1}^{\text{max}}, C_{Rrow2}^{\text{max}}, \dots, C_{Rrowk}^{\text{max}}, \dots, C_{RrowN}^{\text{max}}\}$, where $C_{\text{left_max}}$ and $C_{\text{right_max}}$ are the cluster for the pixel point of the laser beams with maximum gray value in the left and right area of the boundary in each row, respectively.

Step 3: Combine with the obtained $C_{\text{left_max}}$ and $C_{\text{right_max}}$ the linear equation of the laser beam on the left and right side of the boundary line can be fitted by the least square fitting with constraints, respectively. Assume that the distance equation from the each pixel point in the cluster $C_{\text{left_max}}$ and $C_{\text{right_max}}$ to the fitting straight line are:

$$|a_i x_i^l + b_i y_i^l + c_l| / \sqrt{a_i^2 + b_i^2} = |d_i^l|$$

$$|a_r x_r^j + b_r y_r^j + c_r| / \sqrt{a_r^2 + b_r^2} = |d_r^j| \quad (22)$$

where, a_l , b_l and c_l are the center line parameters for the left laser beam. a_r , b_r and c_r are the center line parameters for the right laser beam. i , j denotes the i^{th} and j^{th} pixel point in the cluster $C_{\text{left_max}}$ and $C_{\text{right_max}}$, respectively.

The linear equation of the center line of the double laser beams can be respectively fitted by the least square fitting with constraints as follows

$$L(a, b, c, \lambda) = \frac{1}{n} \|a\mathbf{X} + b\mathbf{Y} + c - \mathbf{D}\|^2 + \lambda(a^2 + b^2 - 1), a^2 + b^2 = 1 \quad (23)$$

The line fitting error objective function is defined by Eq. (24), the optimal solution can be obtained when the line fitting error is smaller than the maximum allowable error.

$$\min_{a, b, c} e(a, b, c) = \min_{a, b, c} \frac{1}{n} \|(\mathbf{X}, \mathbf{Y})(a, b)^T + c - \mathbf{D}\|^2 \quad (24)$$

The proposed methods are beneficial and reliable for the laser beams segmentation, extraction and positioning in the complex background in coal mine.

B. IMPROVED 2P3L POSE ESTIMATION MODEL BASED ON VANISHING POINT

Inspired by Dhome [17] and Radu Horaud [19], an improved pose estimation algorithm is developed to determine the

closed-form solutions from three lines. Different the higher-degree polynomial and the complex iteration solution process, the improved pose estimation algorithm can obtain the unique close-form solution by introduced vanishing point. The perspective projection model for the laser beams-based target are shown in Fig.5.

The laser beams-based target consists of the two parallel center lines L_1, L_3 of laser beams, and the line L_2 that formed by the laser spot centers P_1, P_2 . The lines L_1, L_2 and L_3 are coplanar, in which the L_1, L_3 are perpendicular to L_2 , respectively. P_1, P_2 are the intersection point of the lines L_1, L_3 and L_2 . Suppose the camera coordinate system is $O_c X_c Y_c Z_c$. The laser beams-based target coordinate system is $O_d X_d Y_d Z_d$, the origin O_d is located at the center of P_1 and P_2 . Let the vectors of space line $L_i = \mathbf{V}_i(A_i, B_i, C_i), (i=1,2,3)$. The X_d axis is along the vectors direction of L_2 , the Z_d axis is along the vectors direction of L_3 , the Y_d axis is along the vectors direction of $(O_d Z_d \times O_d X_d)$.

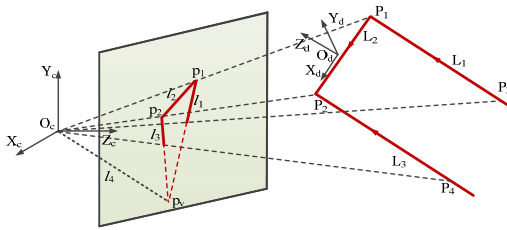


FIGURE 5. The perspective projection model for the pose estimation from line correspondences.

Assume l_i is the projection line on the image plane that corresponding to the space line L_i . p_1, p_2 is the projection point on the image plane that corresponding to the space point P_1, P_2 . Let the projection line equation be $a_i x + b_i y + c = 0, (i=1,2,3)$. The direction vector of the image line l_i can be defined as $\mathbf{v}_i(-b_i, a_i, 0)$. The point on the projection line l_i is defined as $\mathbf{t}_i(x_i, y_i, f)$ in the camera coordinate system. Define the constraints plane S_i that formed by the laser beam space line L_i , the image projection line l_i and the camera optical center O_c . Therefore, the normal vector of the constraints plane S_i can be expressed as

$$\mathbf{N}_i = \mathbf{o}\mathbf{t}_i \times \mathbf{v}_i \quad (25)$$

Where

$$\mathbf{o}\mathbf{t}_i = (x_i, y_i, f)$$

$$\mathbf{v}_i = (-b_i, a_i, 0)$$

$$\mathbf{N}_i = (a_i f, b_i f, c_i)$$

In accordance with the constraints conditions that the space line L_1 is parallel to L_3 , the space line L_1 is perpendicular to the normal vector \mathbf{N}_1 of the projection plane S_1 , and the space line L_3 is perpendicular to the normal vector \mathbf{N}_3 of projection plane S_3 . Thus, the direction vectors of the double laser lines can be respectively expressed as follows

$$\mathbf{L}_3 = \mathbf{L}_1 \times \mathbf{N}_3 = (A_1, B_1, C_1) \quad (26)$$

The direction vectors of the space line L_2 can be expressed as follows

$$\mathbf{L}_2 = \mathbf{L}_1 \times \mathbf{N}_2 = (A_2, B_2, C_2) \quad (27)$$

Let $\mathbf{p}_1 = (x_1, y_1, f)$ and $\mathbf{p}_2 = (x_2, y_2, f)$. The direction vectors of the space line L_2 can also be expressed as follows

$$\mathbf{L}'_2 = k_2 \mathbf{p}_2 - k_1 \mathbf{p}_1 \quad (28)$$

Eq. (28) can be rewritten as

$$\mathbf{L}'_2 = \begin{pmatrix} k_2 x_2 - k_1 x_1 \\ k_2 y_2 - k_1 y_1 \\ k_2 f - k_1 f \end{pmatrix} \quad (29)$$

Suppose that $k_i (i=1,2)$ is the ratio between the distance from camera optical center O_c to the space point P_i and the distance from camera optical center O_c to the image points p_i . The space point P_i in the camera coordinate system can be expressed as $P_i(k_i x_i, k_i y_i, k_i f), (i=1,2)$. As shown in Fig.5, $\mathbf{p}_v(x_v, y_v, f)$ is the intersection point of the image line l_1 and l_2 . The line l_4 is the connection line between the vanishing point p_v and the camera optical O_c . According to linear perspective, the line l_4 is parallel to the line L_1 and L_3 . Therefore, the line l_4 is perpendicular to the line L_2 , we can obtain the geometric relation as follows

$$x_v(k_2 x_2 - k_1 x_1) + y_v(k_2 y_2 - k_1 y_1) + f^2(k_2 - k_1) = 0 \quad (30)$$

Eq. (30) can be rewritten as follows

$$\lambda = \frac{x_v x_1 + y_v y_1 + f^2}{x_v x_2 + y_v y_2 + f^2}, \quad k_2 = \lambda k_1 \quad (31)$$

Due to the laser beams L_2 is parallel to L'_2 , we can obtain the Eq. (32) by the relation of the vector dot product

$$\mathbf{L}_2 \cdot \mathbf{L}'_2 = |\mathbf{L}_2| |\mathbf{L}'_2| \quad (32)$$

Where,

$$\mathbf{L}_2 = (A_2, B_2, C_2)$$

$$\mathbf{L}'_2 = (k_2 x_2 - k_1 x_1, k_2 y_2 - k_1 y_1, k_2 f - k_1 f)$$

Suppose the prior constraints condition that the distance between two parallel laser beams L_1 and L_3 is a . In addition, by combining with the Eq. (31) and (32), we can obtain

$$k_1 = \frac{a \sqrt{A_2^2 + B_2^2 + C_2^2}}{A_2(\lambda x_2 - x_1) + B_2(\lambda y_2 - y_1) + C_2(\lambda f - f)}$$

$$k_2 = \frac{a \lambda \sqrt{A_2^2 + B_2^2 + C_2^2}}{A_2(\lambda x_2 - x_1) + B_2(\lambda y_2 - y_1) + C_2(\lambda f - f)} \quad (33)$$

The three-dimensional coordinates of P_1 and P_2 in the camera coordinate system can be calculated by the obtained k_1 and k_2 .

$$\mathbf{P}_1 = \left(\frac{k_1 x_1}{\sqrt{x_1^2 + y_1^2 + f^2}}, \frac{k_1 y_1}{\sqrt{x_1^2 + y_1^2 + f^2}}, \frac{k_1 f}{\sqrt{x_1^2 + y_1^2 + f^2}} \right) \quad (34)$$

$$\mathbf{P}_2 = \left(\frac{k_2 x_2}{\sqrt{x_2^2 + y_2^2 + f^2}}, \frac{k_2 y_2}{\sqrt{x_2^2 + y_2^2 + f^2}}, \frac{k_2 f}{\sqrt{x_2^2 + y_2^2 + f^2}} \right) \quad (35)$$

Let P_3 and P_4 are respectively the space point in the space straight line L_1 and L_2 , where the distance between P_3 and P_1 is a and the distance between P_4 and P_2 is a . The three-dimension space coordinate of the point P_i ($i=3,4$) are defined as $P_i = (X_{ci}, Y_{ci}, Z_{ci})$. Similar to the Eq. (32), we can obtain the relation by the vector dot product as follows

$$L_1 \cdot L'_1 = |L_1| |L'_1|, \quad (36)$$

$$L_3 \cdot L'_3 = |L_3| |L'_3| \quad (37)$$

Where,

$$L'_1 = (X_{c3} - X_{c1}, Y_{c3} - Y_{c1}, Z_{c3} - Z_{c1}), L_3 = L_1 = (A_1, B_1, C_1)$$

$$L'_3 = (X_{c4} - X_{c2}, Y_{c4} - Y_{c2}, Z_{c4} - Z_{c2})$$

By combing with the relation

$$\frac{X_{c3} - X_{c1}}{A_1} = \frac{Y_{c3} - Y_{c1}}{B_1} = \frac{Z_{c3} - Z_{c1}}{C_1} \quad (38)$$

$$\frac{X_{c4} - X_{c2}}{A_3} = \frac{Y_{c4} - Y_{c2}}{B_3} = \frac{Z_{c4} - Z_{c2}}{C_3} \quad (39)$$

We obtain the three-dimensional coordinates of the space point P_3 and P_4 in the camera coordinate system, which can be calculated as follow

$$P_3 = \left(P_1(1) + \frac{aA_1}{\sqrt{A_1^2 + B_1^2 + C_1^2}}, P_1(2) + \frac{aB_1}{\sqrt{A_1^2 + B_1^2 + C_1^2}}, P_1(3) + \frac{aC_1}{\sqrt{A_1^2 + B_1^2 + C_1^2}} \right) \quad (40)$$

$$P_4 = \left(P_2(1) + \frac{aA_3}{\sqrt{A_3^2 + B_3^2 + C_3^2}}, P_2(2) + \frac{aB_3}{\sqrt{A_3^2 + B_3^2 + C_3^2}}, P_2(3) + \frac{aC_3}{\sqrt{A_3^2 + B_3^2 + C_3^2}} \right) \quad (41)$$

With obtained the positioning results of the laser spot center and laser line of the laser beams target, the proposed improved pose estimation algorithm can obtain the 3D space coordinate of feature points in the camera coordinate through close-form solution. Assume that the 3D space coordinate of P_i in the laser beams-based target coordinate system are P_{bi} (x_{bi}, y_{bi}, z_{bi}), the obtained 3D space coordinate of P_i in the camera coordinate system are P_{ci} (x_{ci}, y_{ci}, z_{ci}). The transform relation between the target and camera coordinate system can be defined as

$$P_{ci} = R_b^c P_{bi} + T_b^c, \quad (i=1,2,3,4) \quad (42)$$

The rotation matrix R_b^c and translation matrix T_b^c can be respectively defined with $Q(r)$ and $W(r)$ as follows

$$\begin{bmatrix} 1 & 0 \\ 0 & R_b^c \end{bmatrix} = Q^T(r) W(r) \quad (43)$$

$$\begin{bmatrix} 0 \\ T_b^c \end{bmatrix} = 2Q^T(r) s \quad (44)$$

The rotation matrix R_b^c and translation matrix T_b^c can be obtained by the error objective function that defined by Eq. (45) using dual quaternion [34].

$$F(r, s) = \min \frac{1}{N} (r^T G_1 r + s^T G_2 s + 4Ns^T s + G_3) \quad (45)$$

Where,

$$G_1 = -\sum_{i=1}^N (Q^T(P_{bi}) W(P_{ci}) + W^T(P_{ci}) Q(P_{bi}))$$

$$G_2 = 4 \sum_{i=1}^N (Q(P_{bi}) - W^T(P_{ci}))$$

$$G_3 = \sum_{i=1}^N (P_{bi}^T P_{bi} + P_{ci}^T P_{ci})$$

V. EVALUATION

The experimental platforms were built to verify and evaluate the above theoretical research, which include the environmental adaptability of vision-based laser beams segmentation, extraction and positioning, the effectiveness of the proposed underground camera blur model and deblurring algorithms, and the performance of the proposed machine body localization method.

A. ENVIRONMENTAL ADAPTABILITY EVALUATION

Low illumination environment with mining lights, and other stray lights in driving working face were simulated in laboratory. The laser beams-based target were specially designed, which was realized by two parallel laser alignment instruments. The camera MV_EM510C was used to capture the laser beams-based target images. The wavelength of laser beams is 660 nm. The collected image and corresponding feature extraction and location results are shown in Fig. 6.

It can be seen from Fig.6 that the laser spots and laser lines can be well segmented and extracted through the proposed feature extraction methods in Section IV.A. In comparison with the laser beams location results as shown in Fig.6a when without stray interference, the RMS errors of the laser spots location results when with stray lights interferences were 0.029, 0.016, 0.033, 0.026, 0.055, 0.043, 0.052, and 0.064 pixel, respectively. The RMS errors of the laser lines location when with stray lights interferences were 0.018, 0.038, 0.079, 0.045, 0.081, 0.064, 0.095, and 0.048 pixel, respectively. The results demonstrated that the laser beams feature extraction and location results by the proposed algorithm are reliable and robust in the complex environment. It demonstrated that the proposed methods can enables the laser-beams based target to be distinguished in the complex complicated background where there exist interference of stray lights in the low illumination. The specially designed laser beams target and the proposed methods are effective, which make the vision measurement simplification in the tunnel work face.

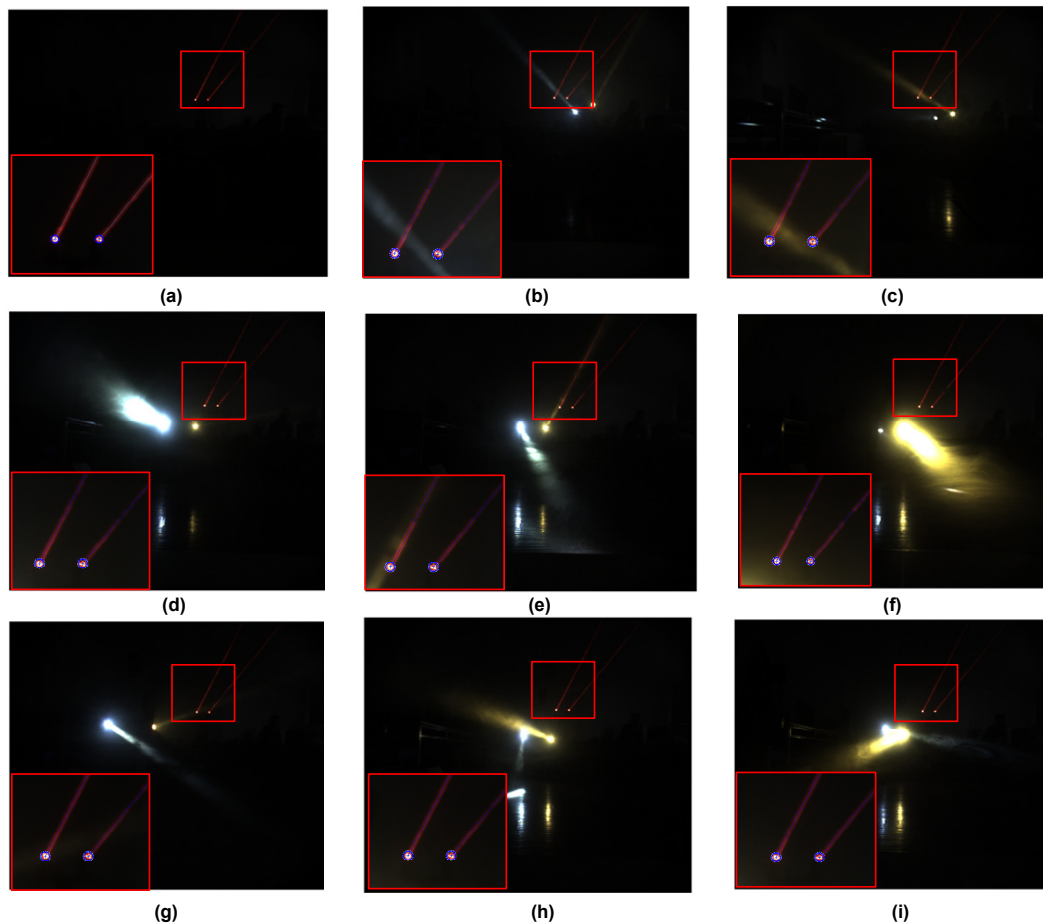


FIGURE 6. The laser beams extraction and location evaluation in the low illumination environment with stray lights. (a) The laser beams extraction and location results when without stray lights interference, (b), (c), (d), (e), (f), (g), (h), and (i) are the laser beams extraction and location results when with stray lights interference .

B. UNDERGROUND CAMERA NON-UNIFORM BLUR MODEL EVALUATION

To verify the effectiveness of the proposed blurred laser beams restoration algorithm, the combination unit of the two-layer glasses and camera were placed on a vibration platform as shown in Fig.7 to simulate the effect of vibration from underground tunneling. The image were firstly collected in static condition when with and without glasses, which were used as the ground-truth to make a comparison. The vibration platform provided a sinusoidal excitation with frequency at 10Hz~30Hz and maximum amplitude at 3mm. The camera with two-layer glass were used to collect laser beam-based target images. The collected blurred laser beams were processed with our proposed laser beams restoration algorithm.

Fig.8 gives the laser beam extraction comparison results between the blurred images, deblurred images by Fergus's and deblurred images by proposed algorithm. The deblurred results shown in Fig.8 indicated that energy distribution of restored laser spots are more concentrated and the restored laser beams location are closer to the ground-truth. The laser line extraction deviation in Fig.8 and the laser beams extraction residual distribution in Fig.8 both demonstrated

that proposed algorithm is effective. It can also be seen from Fig.8 that the RMS errors of the blurred images were 8.2670, 14.7585, 3.4315, 11.2567 pixel, respectively. The RMS errors of the deblurred images by proposed algorithm were 0.0650, 0.7178, 0.2231, 0.0955 pixel, respectively. The RMS errors of the deblurred images by Fergus's were 4.0464, 6.2607, 1.8511, 5.2312 pixel, respectively. The results demonstrated that the deblurred laser beams location were both decreased by Fergus' algorithm and proposed algorithm, and the restored laser beams and laser spot by proposed algorithm are closer to ground-truth than Fergus's.

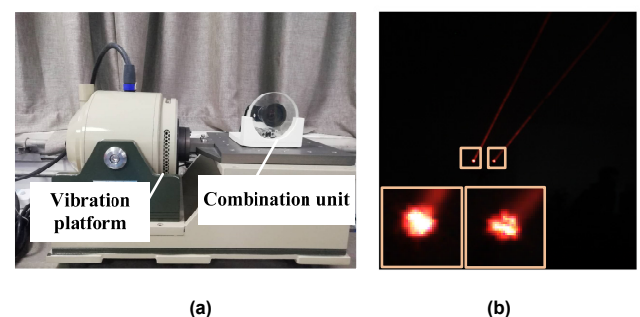
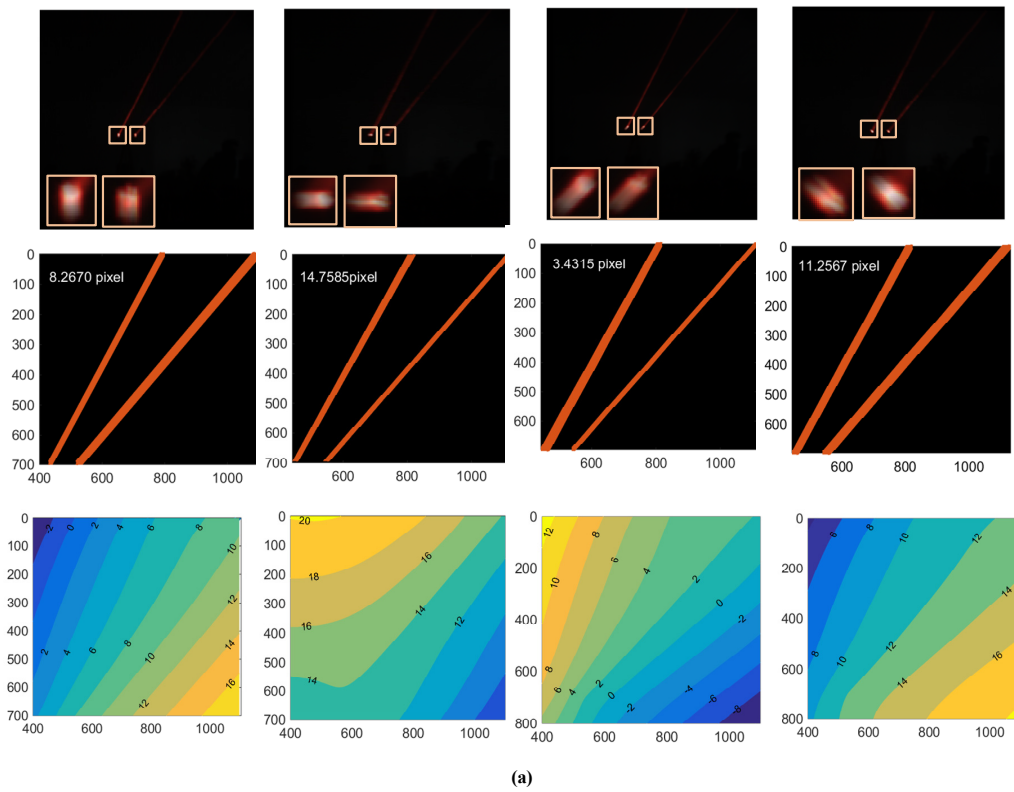
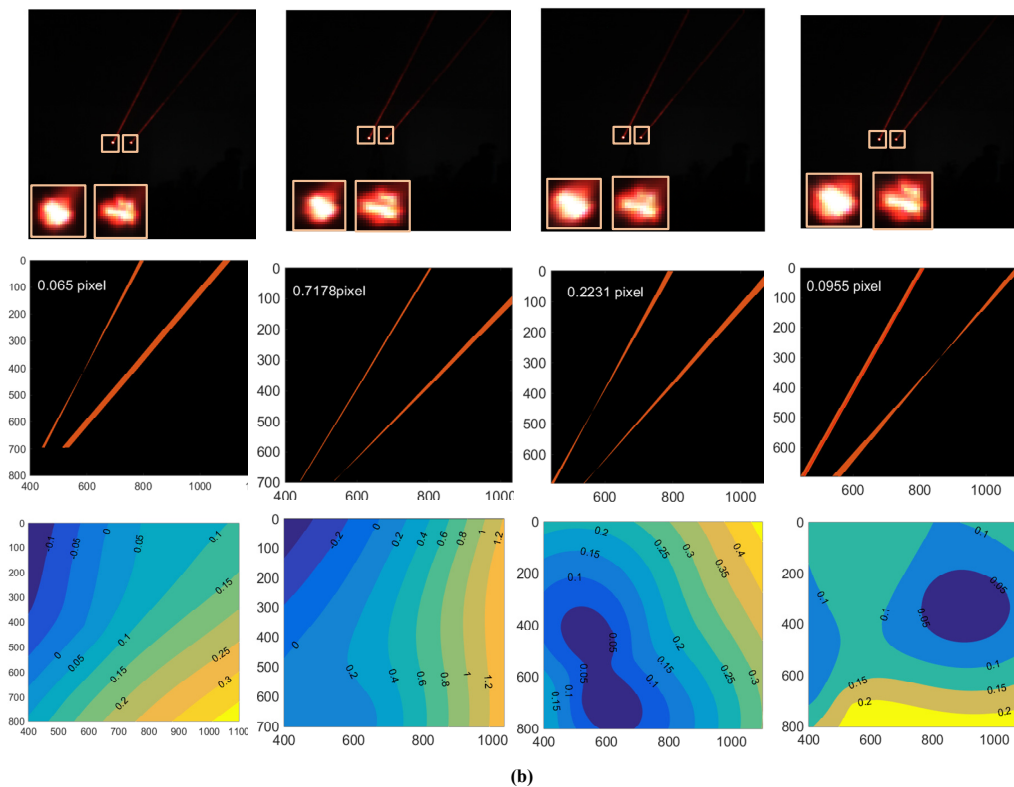


FIGURE 7. The underground camera blur model evaluation experimental platform. (a)The vibration experimental platform. (b)The collected laser beams image when in static condition.



(a)



(b)

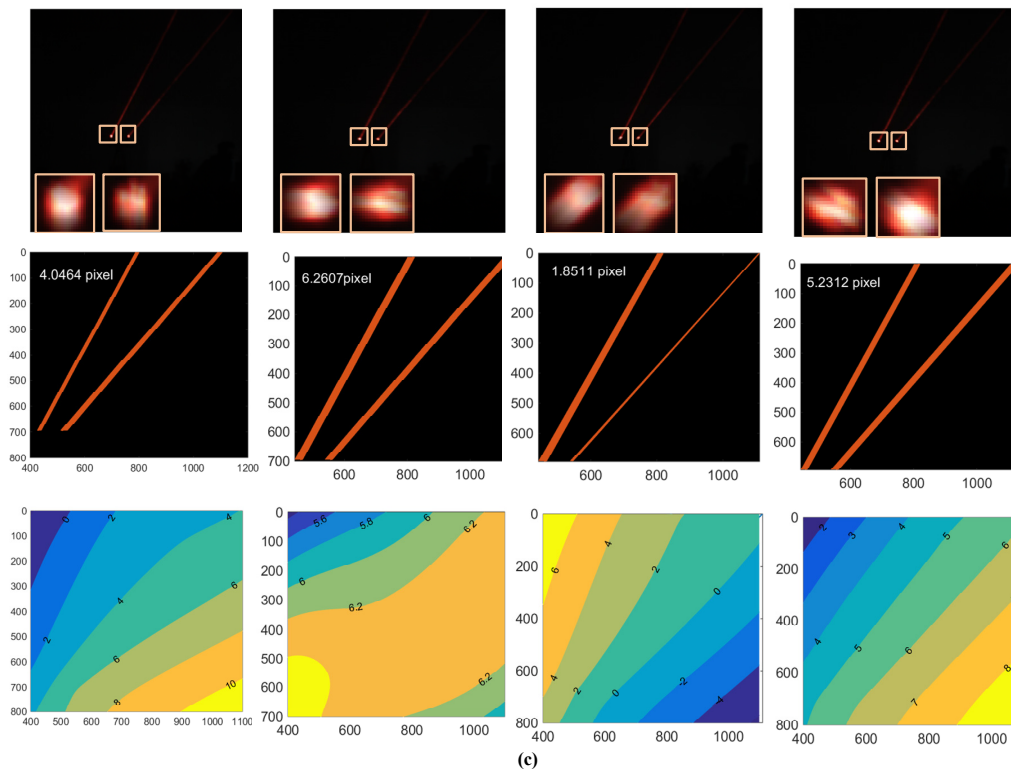


FIGURE 8. The deblurred comparison results of the laser spots and laser beams. From top to down in (a),(b) and (c) are the laser beams images, the extracted laser line pixel residuals that relative to the ground-truth, and the contour map of the laser beams image distortion distribution, respectively. (a) The blurred image caused by vibration. (b) The deblurred image by the proposed algorithms. (c) The deblurred image by Fergus's.

C. POSE ESTIMATION EVALUATION

Vision-based Boom-type roadheader pose estimation platform is setup as shown in Fig. 9. The system mainly consists of a mobile robot, the laser beam-based target, mine explosion-proof camera MV_EM510C, total station, smoke generator, PC computer and so on. The specially designed laser beams-based target is formed by double parallel mine laser pointers. Here, the mobile robot is used to simulate the movement of the Boom-type roadheader in tunnel roadway. The smoke generator is used to simulate the dusty environment in coal mine. For the visual system, the vision-based base coordinate system is placed in the laser beams-based target coordinate system of $O_0X_0Y_0Z_0$ and the measurement coordinate system is placed in the camera coordinate system of $O_cX_cY_cZ_c$. The pose transform relation \mathbf{M}_c^0 of the camera in the laser beams-based target coordinate system can be directly obtained by the proposed vision-based methods in Section IV. The total station is

adopted for the pose accuracy evaluation of the proposed visual system.

Establish the base coordinate system $O_tX_tY_tZ_t$ of the total station, obtain the 3D spatial coordinates of multiple points on the laser beams in the total coordinate system. Suppose the three-dimensional coordinate of the multiple points in the visual base coordinate system are $\mathbf{P}_{0i}(x_{0i}, y_{0i}, z_{0i})$, and the three-dimensional coordinate of multiple points in the total station coordinate system are $\mathbf{P}_{ti}(x_{ti}, y_{ti}, z_{ti})$. Thus, the transformation matrix \mathbf{M}_t^0 between the vision-based base coordinate system $O_0X_0Y_0Z_0$ and the total station's base coordinate system $O_tX_tY_tZ_t$ can be calculated using dual quaternion [34]. The pose transformation relation \mathbf{M}_c^0 of camera in the vision-based base coordinate system can be transformed to in the total station system by $\mathbf{M}_c^t = \mathbf{M}_c^0 \mathbf{M}_t^0$. It makes the performance comparison between the vision-based pose estimation system and total station system can be realized in the unified coordinate system $O_tX_tY_tZ_t$.

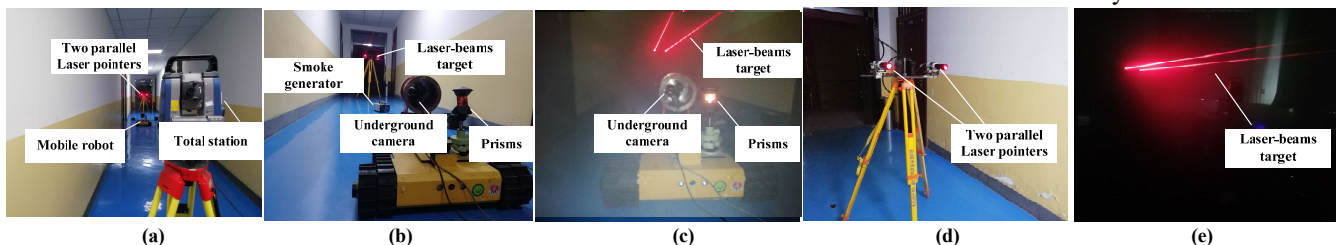


FIGURE 9. Experimental platform for laser beam-based pose measurement system. (a) The experimental platform setup; (b) Laser beams-based machine body pose visual measurement system; (c) The simulated underground low illumination environment with dense-dust; (d) The specially designed apparatus with two parallel mine laser pointers. (e) The double parallel laser beams-based target.

As shown in Fig. 9, the prisms were tied up on the mobile robot body to create the measurement coordinate frame of the total station system. The pose transformation matrix \mathbf{M}_i^p of the prisms in the base coordinate system O_XY_Z can be given directly, which were taken as the ground-truth. Thus, the external parameters between the camera coordinate system and the prisms coordinate system can be calibrated by $\mathbf{M}_c^p = \mathbf{M}_c^0 \mathbf{M}_0^i \mathbf{M}_i^p$. On the basis of the above calibration, the pose estimation accuracy can be evaluated on the basis of the unified coordinate system O_XY_Z . Control the mobile robot to move in the simulated tunnel roadway. The 100 times repeatability test at several different distances were conducted to obtain the vision-based pose estimation. The 95% confidence interval error ellipsoid shown in Fig. 10 presents the position uncertainty at different distances between the camera and laser beams-

based target along the simulated tunnel roadway. The position error directions were calculated using the obtained localization results in the ellipsoid wireframe. It demonstrated that the target position has the largest uncertainty along the direction nearly parallel to the z-axis direction, which were shown in red solid line. Similar results are showed on each error ellipsoid at different distances. Moreover, the results in Table I showed that position error evaluation at different distances between the camera and target. The largest uncertainty of target position in the camera system increases to the target's distance to the camera, and the two smallest uncertainty of target position has little to do with the distances. The results verify the effectiveness of the proposed laser beams-based machine body localization method for Boom-type roadheader this paper.

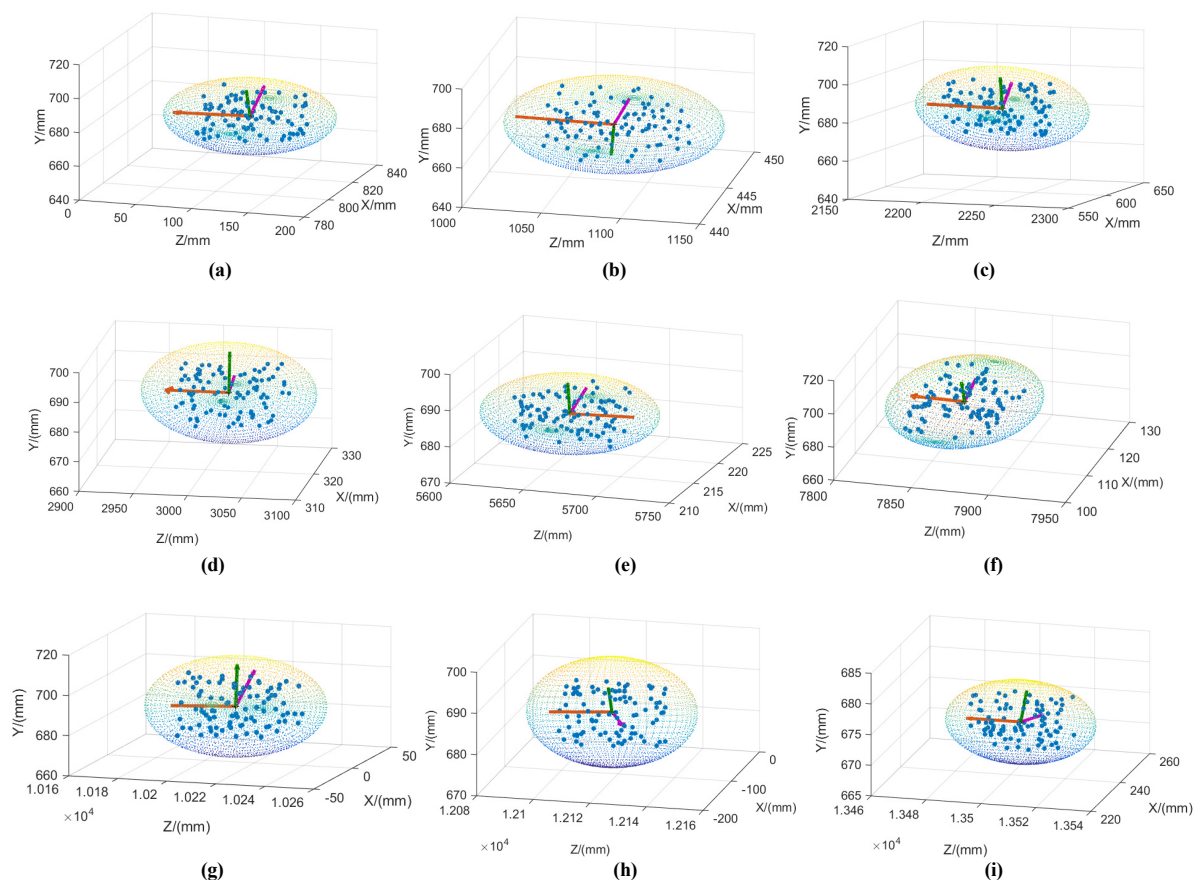
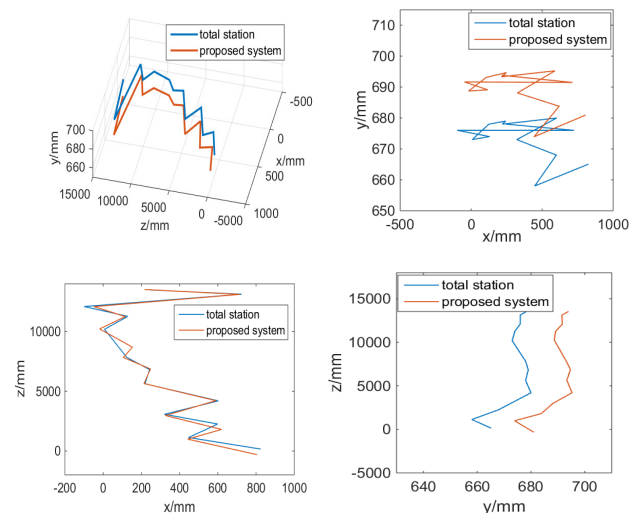


FIGURE 10. Experimental results of 95% confidence interval error ellipsoid with the position error direction for the vision-based pose measurement system. (a), (b), (c), (d), (e), (f), (g), (h), and (i) are the 95% confidence interval error ellipsoids and the position error distribution and the largest, second-largest, smallest position error direction. Notice that the distance between the mobile robot and target decrease, and the distance between the mobile robot and the total station increase when the mobile robot moves along the simulated tunnel roadway.

TABLE I POSITION ERROR EVALUATION AT DIFFERENT DISTANCES BETWEEN THE CAMERA AND TARGET

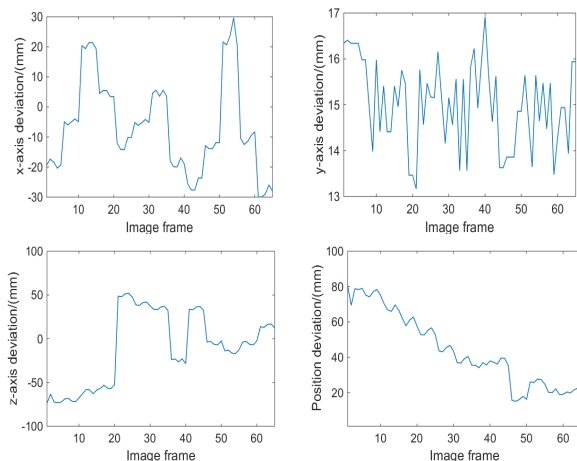
	X-axis error avg±std(mm)	Y-axis error avg±std(mm)	Z-axis error avg±std(mm)		X-axis error avg±std(mm)	Y-axis error avg±std(mm)	Z-axis error avg±std(mm)		X-axis error avg±std(mm)	Y-axis error avg±std(mm)	Z-axis error avg±std(mm)
(a)	8.53±4.46	13.47±5.10	52.61±17.87	(b)	2.86±1.18	13.52±5.50	45.97±16.13	(c)	9.79±5.08	14.12±6.89	39.26±15.84
(d)	2.32±1.09	14.34±5.08	37.79±15.45	(e)	2.87±1.28	13.76±3.23	35.50±15.76	(f)	8.75±5.37	13.41±4.33	29.57±14.45
(g)	13.38±6.38	13.13±5.81	24.45±11.71	(h)	14.47±5.47	13.98±4.43	19.60±9.15	(i)	6.84±3.11	14.29±2.14	16.66±8.23

The proposed vision-based measurement system this paper and the total station were used to carry out the pose estimation at the same time. The measurement comparison results were shown in Figs. 11, 12 and 13. Fig. 11 shows the trajectory of the mobile robot in the simulated tunnel roadway and its projection on the plane. It can be seen from Fig. 11 that the proposed method exhibits good performance, as the trajectory measured by the proposed method was close to that measured by the total station.



(a) The trajectory of the mobile robot when its move along the simulated tunnel roadway; (b) The trajectory of the mobile robot projected in the XY plane; (c) The trajectory of the mobile robot projected in the XZ plane; (d) The trajectory of the mobile robot projected in the YZ plane

FIGURE 11. The trajectory of the mobile robot and its projection on the plane when it move along the simulated tunnel roadway

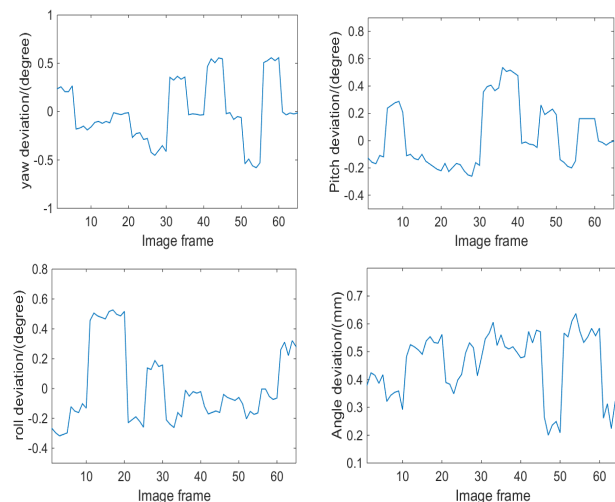


(a) Position measurement deviation in the X-axis direction; (b) Position measurement deviation in the Y-axis direction; (c) Position measurement deviation in the Z-axis direction; (d) Position measurement deviation.

FIGURE 12. The position measurement error when the mobile robot move along the simulated tunnel roadway.

Fig. 12 and Fig.13 show the position and orientation measurement errors, and it can be deduced that the mean relative error of position were 14.62 mm in X-axis, 15.08 mm in Y-axis, and 36.67 mm in Z-axis, respectively. The mean relative error of pitch angle θ_x , yaw angle θ_y , and roll angle θ_z were 0.24°, 0.19° and 0.21°, respectively. According to the rule that the allowed pose estimation error in

underground roadway construction, the proposed laser beams-based localization method can meet the requirement for pose measurement of Boom-type roadheader.



(a) Yaw angle deviation; (b) Pitch angle deviation; (c) Roll angle deviation; (d) Angle measurement deviation

FIGURE 13. The angle measurement error when the mobile robot move along the simulated tunnel roadway.

VI. CONCLUSION

This paper proposed a monocular vision-based measurement method for the machine body of Boom-type roadheader. An underground camera blur model and deblurring algorithm were proposed to decrease vibration errors. By establishing monocular vision measurement system, the body localization is realized by the laser beam images. The laser beams feature extraction, the pose estimation method, the blur model and deblurring algorithms were discussed. Experimental evaluation are designed to verify the performance of the proposed method, and the deblurring algorithm is investigated and evaluated.

Laser beams from the mine laser pointer was used to taken as image features to build the pose estimation system for Boom-type roadheader. A parallel laser beams-based target is mounted on the top of underground roadway in coal mine, the images of the parallel laser beams are captured by underground explosion-proof camera that installed on the body of Boom-type roadheader. The environmental adaptability evaluation results shows that the laser beams target has the higher extraction accuracy and the stronger anti-occlusion ability in the coal environment where is dense-dust, low illumination and with the stray lights interference

Taking mining vibration into consideration, an underground camera blur model that incorporated the two-layer glasses refractive effect was proposed. The blur model explicitly reveals the change of imaging optical path under the influence of vibration and double layer explosion-proof glass. Moreover, a deblurring algorithm was developed to decrease the image blurring for the underground visual measurement system in the tunneling process. The performance of the deblurring algorithm is investigated and evaluated, the experimental results indicates that the

proposed method can significantly reduce the influence of motion blur, and the accuracy of the restored laser beams image is higher than that of the existing Fergus algorithms.

The localization process includes the laser beams extraction, feature positioning, as well as the pose estimation. The defined color space constraints, Euclidean distance constraints as well as the introduced boundary line constraints are demonstrated to be effective for the underground laser beams target image segmentations, feature extraction, and positioning. Then the proposed improved pose estimation algorithm introduce the vanishing point and enables to determine the unique closed-form solutions from line correspondences, which is better than existing pose estimation algorithms that involves higher-degree polynomial and the complex iteration solution process.

The experimental platforms were built to verify the performance of the proposed localization method, the measurement comparison results shows that the pose measurement error less than the permissible error of roadway cutting in coal mine safety regulation, which can meet the machine body localization requirement for Boom-type roadheader.

The future work will be to focus on the performance of the system in the tunnel face in coal mine. Considering that the lost frame caused by occlusion may affect the precise positioning, another potential research direction is on the fusion of the vision-based system with the inertial navigation technology. In addition, the localization method and underground camera non-uniform blur model will be further studied and applied to improve the system measurement accuracy and reliability.

ACKNOWLEDGMENT

Authors acknowledge the support from the students Yonggang Du, Chao Zhang, Nan Xie, Kaixin Zhang, Chuang Zhou, Jianxiong Zhao, and Tianlong Wang for their assistance in the experiments.

REFERENCES

- [1] Michalak M., Sikora B., Sobczyk J. (2016) Diagnostic Model for Longwall Conveyor Engines. In: Gruca A., Brachman A., Kozielski S., Czachórski T. (eds) Man-Machine Interactions 4. Advances in Intelligent Systems and Computing, vol 391. Springer, Cham.
- [2] Brodny J., Tutak M., Michalak M. (2017) The Use of the TGSP Module as a Database to Identify Breaks in the Work of Mining Machinery. In: Kozielski S., Mrozek D., Kasprowski P., Małysiak-Mrozek B., Kostrzewa D. (eds) Beyond Databases, Architectures and Structures. Towards Efficient Solutions for Data Analysis and Knowledge Representation. BDAS 2017. Communications in Computer and Information Science, vol 716. Springer, Cham.
- [3] Hai Yang; Wei Li; Chengming Luo; Jinyao Zhang; Zhuoyin Si. Research on Error Compensation Property of Strapdown Inertial Navigation System Using Dynamic Model of Shearer. IEEE Access. 2016, 4, 2045-2055.
- [4] Hsing-Cheng Chang, Yu-Liang Hsu, Shih-Chin Yang, Jung-Chih Lin, Zhi-Hao Wu. A Wearable Inertial Measurement System With Complementary Filter for Gait Analysis of Patients With Stroke or Parkinson's Disease. IEEE Access. 2016, 4, 8442-8453.
- [5] Caruso, D.; Eudes, A.; Sanfourche, M.; Vissière, D.; Le Besnerais, G. A Robust Indoor/Outdoor Navigation Filter Fusing Data from Vision and Magneto-Inertial Measurement Unit. *Sensors* 2017, 17, 2795.
- [6] Yang X, Zhao F, Chen T. NLOS identification for UWB localization based on import vector machine. *AEU-International Journal of Electronics and Communications*, 87, April 2018, Pages 128-133
- [7] Nuthakki VR, Dhamodharan S. UWB metamaterial-based miniaturized planar monopole antennas. *AEU-Int J Electron Commun*, 2017, 82:93-103
- [8] E. Duff, Tracking a vehicle from a rotating platform with a scanning range laser, *Proceedings of the Australian Conference on Robotics and Automation*, Melbourne, Australia, 2006, p. 12.
- [9] A. Kashani, W. Owen, N. Himmelman, P. Lawrence, R. Hall, Laser scanner-based end-effector tracking and joint variable extraction for heavy machinery, *Int. J. Robot. Res.* 29 (10) (2010) 1338-1352.
- [10] Wu, M.; Jia, W.H.; Hua, W.; Tao, Y.F.; Fu, S.C.; Tao, Y.F.; Zong, K. Zhang, M.J. Autonomous measurement of position and attitude of Boom-type roadheader based on space intersection measurement. *Journal of China Coal Society*, 2015, 40, 2596-2602.
- [11] M. Fiala, "ARTag, a fiducial marker system using digital techniques," in *CVPR '05:2*. Washington, DC, USA: IEEE Computer Society, 2005, pp. 590-596.
- [12] Yang, Wenjuan; Zhang, Xuhui; Ma, Hongwei. Infrared LEDs-Based Pose Estimation With Underground Camera Model for Boom-Type Roadheader in Coal Mining [J]. *IEEE ACCESS*, v7 p33698-33712, 2019.
- [13] Yuan J. S-C. A General Photogrammetric Method for Determining Object Position and Orientation. *IEEE Transactions on Robotics and Automation*, 1989, 5(2):129-142.
- [14] Lowe D. G. Three-dimensional Object Recognition from Single Two-dimensional Images. *Artificial Intelligence*, 1987,31(3):355-395.
- [15] Thai quynh phong, "Object Pose from 2-D to 3-D Point and Line Correspondences," *International Journal of Computer Vision*, vol. 15, pp. 225-243, 1995.
- [16] Stephane Christy and Radu Horaud, "Iterative Pose Computation from Line Correspondences," *Computer Vision and Image Understanding*, vol. 73, no. 1, pp. 137-144, 1999.
- [17] M.Dhome, M. Richetic, J.-T. Lapreste, and G. Rives, Determination of the attitude of 3-D objects from a single perspective view, *IEEE Trans.Pattern Anal.Machine Intell*, 11(12), pp. 1266-1278, 1989.
- [18] H. Chen, "Pose determination from line to plane correspondences: existence solution and closed form solutions," *IEEE Trans.Pattern Anal.Machine Intell*, vol. 13, no. 6, pp. 530-541, 1999.
- [19] Horaud. R. Conio. B. Leboulloux O and Lacolle, B, "An analytic solution for the perspective 4-point Problem," *Computer Vision Graphics and image processing*, vol. 47, no. 1, pp. 33-44, 1989.
- [20] Levin, A., Weiss, Y., Durand, F.: Understanding and evaluating blind deconvolution algorithms. In: *Proceedings of IEEE CVPR '09* (2009)
- [21] Tai, Y.-W., Tan, P., & Brown, M. S. Richardson-Lucy deblurring for scenes under a projective motion path. *IEEE Transactions on Pattern Analysis and Machine Intelligence*, 33(8), 1603-1618. (2011).
- [22] Y. Tai, H. Du, M. Brown, and S. Lin. Correction of spatially varying image and video blur using a hybrid camera. *IEEE Trans. PAMI*, 2009.
- [23] Joshi, N., Kang, S. B., Zitnick, C. L., & Szeliski, R. (2010). Image deblurring using inertial measurement sensors. *ACM Transactions on Graphics*, 29(4), 30:1-30:9 (Proc. SIGGRAPH 2010).
- [24] Gupta A., Joshi N., Zitnick L., Cohen M., Curless B. Single Image Deblurring Using Motion Density Functions. In *Proceedings of European Conference on Computer Vision (ECCV)* 2010.
- [25] R.Fergus, B.Singh, A.Hertzmann, S.T. Roweis, and W.T.Freeman. Removing camera shake from a single photograph. *SIGGRAPH*, 2006.
- [26] Oliver Whyte, Josef Sivic, Andrew Zisserman, et al. Non-uniform Deblurring for Shaken Images, *International Journal of Computer Vision*, 98(2):168-186, 2012.
- [27] Miskin, J. W., & MacKay, D. J. C. (2000). Ensemble learning for blind image separation and deconvolution. In M. Girolani (Ed.), *Advances in independent component analysis*. Berlin: Springer.
- [28] Richardson W H. Bayesian-Based Iterative Method of Image Restoration*[J]. *Journal of the Optical Society of America*, 1972, 62(1): 55-59.

- [29] C. Trinder, J. Jansa, Y. Huang. An assessment of the precision and accuracy of methods of digital target location, *ISPRS Journal of Photogrammetry and Remote Sensing*, Volume 50, Issue 2, April 1995, Pages 12-20.
- [30] Haopeng Zhang, Yi Su, Jian Shang, et al. Accurate Star Centroid Detection for the Advanced Geosynchronous Radiation Imager of Fengyun-4A, *IEEE Access*, 2018, 6, 7987-7999
- [31] HongjunDong, LongWang, Non-iterative spot center location algorithm based on Gaussian for fish-eye imaging laser warning system, *Optik*, Volume 123, Issue 23, December 2012, Pages 2148-2153.
- [32] Xu Z, Shin B, Klette R, et al. Closed form line-segment extraction using the Hough transform [J]. *Pattern Recognition*, 2015, 48(12): 4012-4023.
- [33] Guil N, Villalba J, Zapata E L, et al. A fast Hough transform for segment detection[J]. *IEEE Transactions on Image Processing*, 1995, 4(11): 1541-1548.
- [34] Fathian, Kaveh; Jin, Jingfu; Wee, Sung-Gil. Camera relative pose estimation for visual servoing using quaternions. *Robotics and autonomous system* 2018, 107, 45-62