



## LJMU Research Online

**De Marco, RJ, Groneberg, AH, Yeh, C-M, Ramirez, LAC and Ryu, S**

**Optogenetic elevation of endogenous glucocorticoid level in larval zebrafish**

<http://researchonline.ljmu.ac.uk/id/eprint/13761/>

### Article

**Citation** (please note it is advisable to refer to the publisher's version if you intend to cite from this work)

**De Marco, RJ, Groneberg, AH, Yeh, C-M, Ramirez, LAC and Ryu, S (2013) Optogenetic elevation of endogenous glucocorticoid level in larval zebrafish. *Frontiers in Neural Circuits*, 7. ISSN 1662-5110**

LJMU has developed **LJMU Research Online** for users to access the research output of the University more effectively. Copyright © and Moral Rights for the papers on this site are retained by the individual authors and/or other copyright owners. Users may download and/or print one copy of any article(s) in LJMU Research Online to facilitate their private study or for non-commercial research. You may not engage in further distribution of the material or use it for any profit-making activities or any commercial gain.

The version presented here may differ from the published version or from the version of the record. Please see the repository URL above for details on accessing the published version and note that access may require a subscription.

For more information please contact [researchonline@ljmu.ac.uk](mailto:researchonline@ljmu.ac.uk)

<http://researchonline.ljmu.ac.uk/>



# Optogenetic elevation of endogenous glucocorticoid level in larval zebrafish

Rodrigo J. De Marco\*, Antonia H. Groneberg, Chen-Min Yeh, Luis A. Castillo Ramírez and Soojin Ryu\*

Developmental Genetics of the Nervous System, Max Planck Institute for Medical Research, Heidelberg, Germany

## Edited by:

German Sumbre, Ecole Normale Supérieure, France

## Reviewed by:

Hervig Baier, Max Planck Institute of Neurobiology, Germany

German Sumbre, Ecole Normale Supérieure, France

Akira Muto, National Institute of Genetics, Japan

## \*Correspondence:

Rodrigo J. De Marco and Soojin Ryu, Developmental Genetics of the Nervous System, Max Planck Institute for Medical Research, Jahnstrasse 29, Heidelberg 69120, Germany.

e-mail: rodrigo.de.marco@

mpimf-heidelberg.mpg.de;

soojin.ryu@mpimf-heidelberg.

mpg.de

The stress response is a suite of physiological and behavioral processes that help to maintain or reestablish homeostasis. Central to the stress response is the hypothalamic-pituitary-adrenal (HPA) axis, as it releases crucial hormones in response to stress. Glucocorticoids (GCs) are the final effector hormones of the HPA axis, and exert a variety of actions under both basal and stress conditions. Despite their far-reaching importance for health, specific GC effects have been difficult to pin-down due to a lack of methods for selectively manipulating endogenous GC levels. Hence, in order to study stress-induced GC effects, we developed a novel optogenetic approach to selectively manipulate the rise of GCs triggered by stress. Using this approach, we could induce both transient hypercortisolic states and persistent forms of hypercortisolaemia in freely behaving larval zebrafish. Our results also established that transient hypercortisolism leads to enhanced locomotion shortly after stressor exposure. Altogether, we present a highly specific method for manipulating the gain of the stress axis with high temporal accuracy, altering endocrine and behavioral responses to stress as well as basal GC levels. Our study offers a powerful tool for the analysis of rapid (non-genomic) and delayed (genomic) GC effects on brain function and behavior, feedbacks within the stress axis and developmental programming by GCs.

**Keywords:** glucocorticoids, stress response, HPA axis, optogenetics, larval zebrafish

## INTRODUCTION

Living organisms respond to stress by activating a complex repertoire of tightly regulated processes. These processes aim to preserve homeostasis and are collectively referred to as the stress response (Selye, 1956; Chrousos, 1998). Evolving adaptive responses to stress is essential for survival. However, dysfunctional stress responses can have devastating consequences for health and have been associated with a number of disorders, ranging from heart and vascular problems to depression, schizophrenia, and affective disorders (Holsboer et al., 1984; Nemeroff et al., 1984; Raber, 1998; De Kloet et al., 2005; McEwen, 2008; Yehuda, 2009). Despite their significance, the development of appropriate stress responsiveness and the mechanisms underlying stress response dysfunction remain largely unknown.

The stress response is mediated by the sympathetic nervous system and the hypothalamic-pituitary-adrenal (HPA) axis. While the sympathetic nervous system is responsible for the so called immediate “fight-or-flight” reactions, the HPA axis regulates both rapid and long-term stress effects (Charmandari et al., 2005). At the core of the HPA axis are corticotropin-releasing-hormone (CRH) and arginine vasopressin (AVP)-expressing neurons in the paraventricular nucleus (PVN) of the rostral hypothalamus, which respond to stress by triggering the release of adrenocorticotrophin hormone (ACTH) from the anterior pituitary. ACTH then stimulates glucocorticoid secretion from the adrenal glands. Glucocorticoids (GCs) are thus the final effectors of the HPA axis, with numerous

targets both in the central nervous system and the periphery (Sapolsky et al., 2000).

GCs are known to influence brain function through genomic mechanisms via binding to two ligand-driven transcription factors, the high affinity mineralocorticoid receptor (MR) and the low affinity glucocorticoid receptor (GR), which contribute to delayed GC effects by regulating gene expression (De Kloet et al., 1998). Non-genomic GC effects on neuronal responses and behavior have also been reported, although the mechanisms underlying these rapid effects remain largely unknown (Dallman, 2005; Evanson et al., 2010; Groeneweg et al., 2011). It also remains unknown how non-genomic and genomic GC actions interact with each other to coordinate the activation and inhibition of different processes in multiple brain areas.

The analysis of GC effects under stress, particularly the rapid, non-genomic GC actions, has been hampered by the fact that GC release is tightly couple to that of other hormones. Also, GCs regulate vital functions under non-stress conditions, such as cell proliferation (Dickmeis and Foulkes, 2011). Therefore, elevating GC level is not sufficient to address the role of GCs under stress. It becomes necessary to specifically alter GCs levels under stressful situations triggered by stimuli of known intensity and endocrine effects. Current methods for altering GC levels entail either exposure to stressors or infusions of exogenous GCs. These methods are limited, however. Stressor exposure fails to selectively alter the rate of GC change, as it increases GC levels only via the stimulation of other stress hormones. GC infusion is not straightforward

and can be stressful in itself, making it difficult to assess the impact of the treatment. To advance the analysis of stress correlates in the brain, it is paramount to examine GC actions as a function of time with increased specificity and temporal accuracy.

Because the stress response is conserved across phyla, zebrafish, *Danio rerio*, can aid in dissecting the complexity of GC actions. The zebrafish hypothalamic-pituitary-interrenal (HPI) axis shares key similarities with the HPA axis, with cortisol being the main circulating glucocorticoid in both humans and teleosts (Wendelaar Bonga, 1997; Flik et al., 2006). The preoptic nucleus in teleosts is considered a structure homologous to the mammalian PVN (Peter, 1977; Forlano and Cone, 2007). Adult zebrafish show increased cortisol levels and behavioral stress reactions upon stressor exposure (Ramsay et al., 2006, 2009; Speedie and Gerlai, 2008; Egan et al., 2009; Cachat et al., 2010; Steenbergen et al., 2011). Larval zebrafish also respond to stressors with increased cortisol levels (Alsop and Vijayan, 2008; Alderman and Bernier, 2009; Fuzzen et al., 2010; Clark et al., 2011; Steenbergen et al., 2011). Further, both their basal cortisol levels and expression levels of genes involved in corticosteroid synthesis and signaling increase drastically around the time of hatching, uncovering a stress response system that matures early in development (Alsop and Vijayan, 2008; Alderman and Bernier, 2009). Also importantly, interactions of GRs and serotonin signaling are conserved in zebrafish (Griffiths et al., 2012; Ziv et al., 2012).

In this report, we present a novel protocol for studying stress-induced GC effects. We used larval zebrafish to develop an optogenetic approach aimed at increasing the gain of the stress axis, so as to achieve different levels of endogenous GCs in response to a similarly stressful event. To this end, we expressed photoactivated adenylyl cyclase (bPAC) (Ryu et al., 2010; Stierl et al., 2011) specifically in pituitary cells, which govern GC secretion via ACTH release. Using light as a stressor as well as a source of stimulation for optogenetic control, we could induce both transient and persistent states of hypercortisolemia in a highly controlled fashion. Importantly, optogenetically elevated GCs also enhanced locomotion shortly after stressor exposure, in line with the fact that stress mobilizes energy via GC signaling (Sapolsky et al., 2000). Our work established a powerful approach to modify the gain of the stress axis, making it possible to examine stress-dependent GC effects with high specificity and temporal accuracy. It provides a valuable tool for the analysis of rapid and delayed GC actions, interactions within the stress axis and feedbacks regulating endocrine and behavioral responses to stress.

## MATERIALS AND METHODS

### GENERATION OF TRANSGENIC ZEBRAFISH

cDNA encoding myc-tagged bPAC from the soil bacterium *Beggiatoa* bPAC (Stierl et al., 2011) was PCR amplified with a mutated stop-codon and cloned into a vector containing a viral 2A sequence (Tang et al., 2009) and a fluorescent tdTomato marker flanked by I-SceI and Tol2 transposon recognition sites in the pBR322 backbone. This construct was combined with a fragment of the Pomc promoter, which was PCR amplified from a Pomc-GFP construct (Liu et al., 2003). The

Pomc:bPAC-2A-tdTomato plasmid was incubated with 100 ng Tol2 transposase RNA for 10 min and injected in the presence of 0.05% phenol red into wild-type embryos (cross of AB and TL strains) in the one-cell stage. For further propagation of the transgenic line, we selected one founder, *Tg(Pomc:bPAC-2A-tdTomato)hd10*, with specific tdTomato expression in the pituitary and no ectopic expression.

### ZEBRAFISH HUSBANDRY

Zebrafish breeding and maintenance was performed under standard conditions (Westerfield, 2000). Embryos were collected in the morning and raised on a 12:12 light/dark cycle in E2 medium (Westerfield, 2000). *Tg(Pomc:bPAC-2A-tdTomato)hd10* were crossed with wild-type fish and their progenies selected for the presence of tdTomato expression in the pituitary at 4 or 5 days post fertilization (dpf) using a fluorescent dissecting microscope. To avoid unspecific activation of bPAC prior to the experiments, transgenic embryos were raised in custom-made reflective containers covered by 550 nm long-pass filters (Thorlabs). Zebrafish experimental procedures were performed according to the guidelines of the German animal welfare law and approved by the local government.

### cAMP MEASURE

50 pg capped bPAC RNA was prepared using a commercial mRNA kit (mMessage T7 Ultra Kit, Ambion) and injected into one-cell-stage wild-type embryos. Embryos were maintained under filtered light (see above) and subjected to blue-light stimulation at 1 dpf using the stimulation protocol described below (light power:  $2.8 \text{ mW} \cdot \text{cm}^{-2}$ ). Groups of 27 embryos were collected immediately after the light-offset and homogenized in 0.1 M HCl on ice. After centrifugation, the supernatant was stored at  $-20^\circ\text{C}$ . cAMP level was measured following the acetylation protocol from a cAMP ELISA kit (Enzo Life Sciences). Samples from light-stimulated bPAC-injected embryos were diluted 15 times in order to obtain values within the standard range.

### IMMUNOHISTOCHEMISTRY

6 dpf larvae were fixed overnight at  $4^\circ\text{C}$  in 4% paraformaldehyde (PFA) in phosphate-buffered saline (PBS). Immunohistochemistry was performed as previously described (Ryu et al., 2007), using either polyclonal antibody against human ACTH (National Hormone and Peptide Program, National Institute of Diabetes and Digestive and Kidney Diseases, 1:500) or rabbit polyclonal antibody against Myc-Tag (Cell Signaling Technology, 1:500) as primary antibodies, and Alexa Fluor 488 anti-rabbit (Invitrogen, 1:1000) as a secondary antibody. Detection of residual tdTomato fluorescence after the fixation did not require immunohistochemistry. Larvae were imaged in 80% glycerol using a Nikon 20x glycerol objective and a Leica SP5 CLSM. Confocal image stacks were subsequently evaluated using Amira 5.4 (Visualization Sciences Group) to create maximum intensity projections.

### CORTISOL ELISA

For cortisol detection, groups of 30 larvae (6 dpf) were immobilized in ice water, frozen in ethanol/dry ice bath, and

stored at  $-20^{\circ}\text{C}$ . Cortisol from homogenized samples was extracted with ethyl acetate. We employed a home-made cortisol ELISA protocol (C. M. Yeh, M. Glöck, R. J. De Marco, S. Ryu, unpublished data), using cortisol mouse antibody (EastCoast Bio), cortisol standards (Hydrocortisone, Sigma-Aldrich) and cortisol-HRP (EastCoast Bio). The reactions were stopped using 1M sulfuric acid and read at 450 nm in an ELISA reader (Multiskan Ascent, Thermo Scientific). The data were corrected for dilution factor, extraction efficiency, and recovery function. In all experiments, cortisol samples were taken 2 min after the offset of light, unless otherwise stated.

### MIFEPRISTONE INCUBATION

6 dpf larvae were incubated for 2 h in 1  $\mu\text{M}$  Mifepristone (RU-486, Sigma-Aldrich) dissolved in E2-Medium with 0.1% DMSO. This concentration has been shown to abolish a genomic GC response signal (Weger et al., 2012). During light stimulation, larvae were maintained in the Mifepristone solution to avoid further handling.

### LIGHT STIMULATION

A custom-made LED ring was placed at a fixed distance above a multiwell plate (for behavioral testing) or a single container (for cortisol extraction). The incident angle of the LEDs allowed for homogeneous illumination of the samples. We used custom-made drivers, pulse generators and a TTL control box (USB-IO box, Noldus) to control the LEDs. Larvae were exposed for 18 s or 180 s to either blue- or yellow-light of varying power, using single or multiple stimulation protocols. Each light pulse consisted of 100 ms flashes delivered at 5 Hz. Light power was measured using a hand-held light power meter (Newport). For the multiple stimulation protocol, we used three light pulses delivered with an inter-trial interval of 30 min.

### EARLY LIGHT STIMULATION

To facilitate light stimulation with a higher throughput, we arranged LEDs so as to homogeneously illuminate a six well plate with a light power of  $0.6 \text{ mW} \cdot \text{cm}^{-2}$ . At 4 dpf, we exposed the bPAC-positive (bPAC<sup>+</sup>) larvae and their negative siblings (bPAC<sup>-</sup>) to the above described multiple stimulation protocol. Next, the larvae were placed back in the incubator and kept in E2 medium inside the reflective containers covered by the 550 nm long-pass filters. We repeated this procedure 24 h later. At the end of 5 dpf, we screened the larvae for tdTomato expression in the pituitary. At 6 dpf, both the bPAC<sup>+</sup> and bPAC<sup>-</sup> larvae subjected to the above protocol were either directly collected for measuring basal cortisol levels or first stimulated with a single 180 s squared pulse of blue-light ( $0.6 \text{ mW} \cdot \text{cm}^{-2}$ ) and then collected for measuring light-induced cortisol change. Control animals for each group were handled in the same fashion, but omitting the light stimulation at 4 and 5 dpf. Stimulations were performed within a fixed 3 h window during the larvae's day time.

### BEHAVIORAL TESTING

Behavioral tests were performed using wild-type, bPAC<sup>+</sup> and bPAC<sup>-</sup> 6 dpf larvae. Experiments were conducted under infrared (IR) light, delivered through an array of IR-LEDs mounted inside a custom-made light-proof enclosure placed on a vibration-free

platform (Newport). We used an infrared-sensitive camera (ICD-49E B/W, Ikegami Tsushinki) to image the movements of the swimming larvae at 25 frames  $\text{s}^{-1}$ . The lens of the camera (TV Lens, Computer VARI FOCAL H3Z4512 CS-IR, CBC) was surrounded by a custom-made LED ring and positioned above a multiwell plate (Greiner-Bio One). We used EthoVision XT software (Noldus Information Technology) to simultaneously track the movements of 30 larvae swimming individually inside the wells in 50  $\mu\text{L}$  of E2 medium. In all experiments, the larvae were allowed to adjust to the test conditions for 15 min prior to the recordings. Experiments were conducted at room temperature. We continuously monitored the temperature inside a reference well using a thermocouple (npi electronics) connected to a temperature control system (PTC 20, npi electronics; Exos-2 V2 liquid cooling system, Koolance). All the experiments were performed in a blind fashion using unscreened larvae to avoid effects of pre-handling and exposure to unfiltered light. Tests were conducted between 9:00 and 18:00 and the different experimental groups intermixed throughout the day.

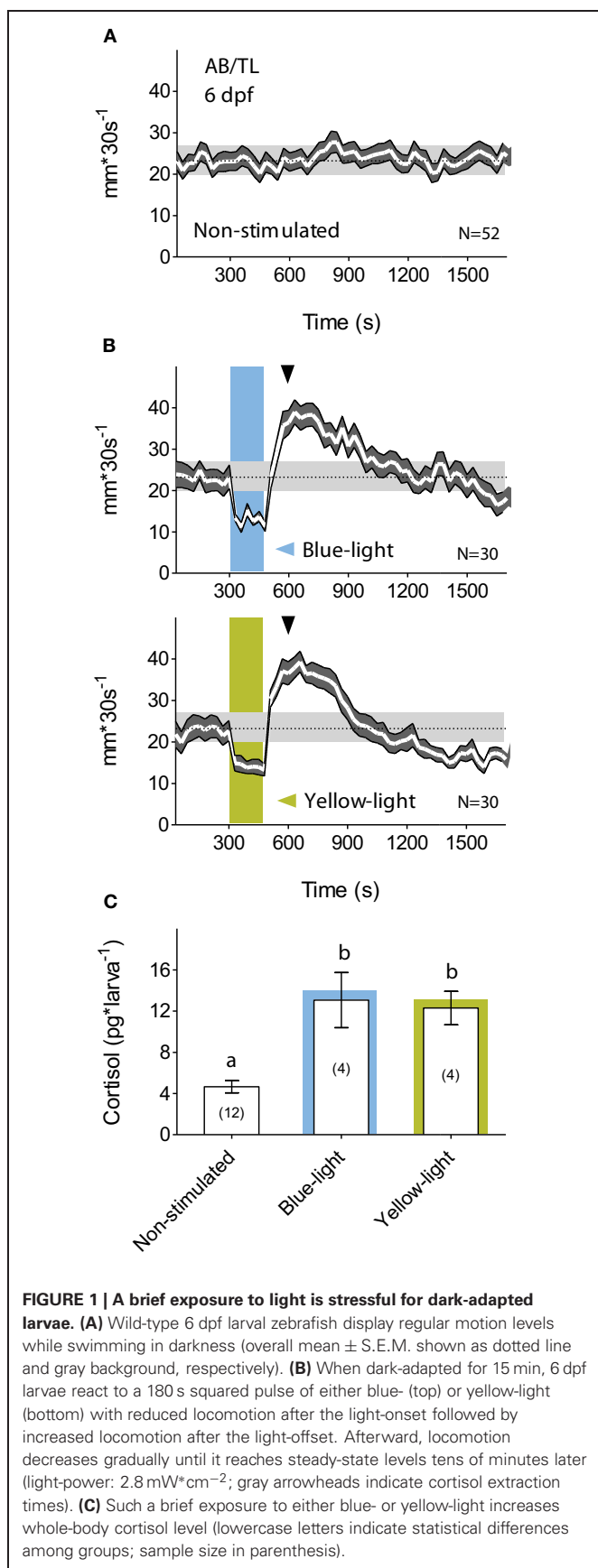
### STATISTICAL ANALYSIS

All data are shown as mean and standard error of the mean (S.E.M.). To facilitate comparison, locomotor activity is expressed either as distance swam per unit of time (Figures 2A–C) or as percentual motion relative to pre-stimulation baseline levels (Figures 5A–C), as these levels did not differ between bPAC<sup>+</sup> and bPAC<sup>-</sup> larvae (Mann–Whitney test,  $p = 0.11$ ). We used Student's  $t$ -tests (two-tailed) for two-group comparisons, or Mann–Whitney  $U$ -tests if the data did not fulfill the assumptions of the  $t$ -test. ANOVAs were used for multiple group comparisons, followed by Bonferroni's *post-hoc* tests, or their non-parametric equivalents. We also used repeated-measures linear regression analysis (Fitzmaurice et al., 2004). Analyzes were carried out using MS-Excel, Matlab 2009b (MathWorks), Prism 5, (Graphpad Software), Sigma Plot (Systat), R and Virtual Dub (Freeware).

## RESULTS

### A BRIEF LIGHT EXPOSURE IS STRESSFUL FOR DARK-ADAPTED LARVAE

The small transparent bodies of larval zebrafish make them suitable for non-invasive manipulation of neuronal activity using light. Yet, larval zebrafish are highly sensitive to photic stimuli (Burgess and Granato, 2007). While swimming in darkness, for example, they display stable rates of discontinuous motion (Figure 1A) and react to a brief exposure to light with stereotyped changes in locomotor activity (Macphail et al., 2009). First, they show a drastic reduction of locomotion after the light onset, followed by increased locomotion after the light-offset. Afterward, locomotion decreases gradually until it reaches steady-state levels several minutes later. A drastic reduction of locomotion in response to external stimulation is generally thought of as a fear-related response. Many species secrete cortisol in threatening situations associated with greater fear. Hence, as a prerequisite to develop optogenetic approaches for stress research, we set up to examine the effect of illumination change on locomotion and cortisol level. Since optogenetic photo-actuators work upon absorption of a wide range of light wavelengths, we first tested whether the larval stereotyped reactions to illumination change could be



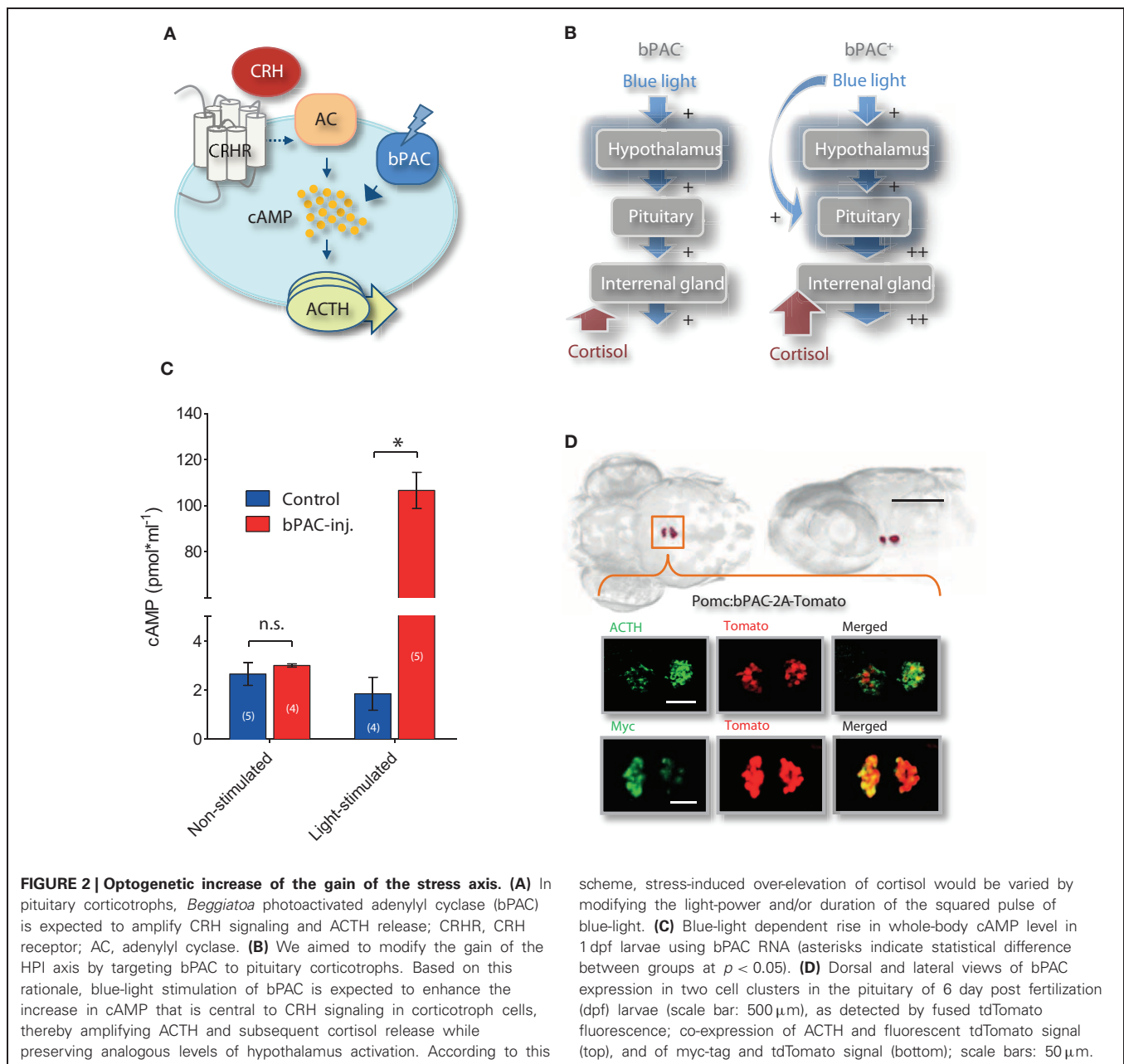
similarly evoked by a squared pulse of either blue- or yellow-light. We observed that both light wavelengths elicited similar motion patterns (**Figure 1B**). Next, we examined the extent to which such a brief exposure to light could act as a stressful event, and observed that 6 dpf larvae reacted to a 180 s squared pulse of either blue- or yellow-light with increased cortisol levels (**Figure 1C**; Mann–Whitney test, blue-light:  $p < 0.01$ , yellow-light:  $p = 0.03$ ), thereby specifying that a squared pulse of light can act as a stressful input signal. This effect of a fast transition from darkness to light could not be accounted for by "wakefulness" variations as reflected in motion. Larvae kept for such a brief period of time either under constant white illumination or in complete darkness displayed similar levels of locomotor activity [ $t$ -test,  $t_{(24)} = 0.4$ ,  $p = 0.72$ ].

### INCREASING THE GAIN OF THE STRESS AXIS

Since light in itself can stimulate stress networks, we reasoned that the presence of photo-actuators within the HPI axis would allow us to meaningfully alter its light-triggered activation. In particular, we aimed to manipulate the increase of cortisol triggered by light so as to induce greater and controllable rates of cortisol rise in response to otherwise similarly stressful events. Technically speaking, this means that we aimed to increase the gain of the stress axis by amplifying the output (cortisol) of a constant input signal (light). To this end, we chose to target the expression of *Beggiatoa* bPAC (Ryu et al., 2010; Stierl et al., 2011) specifically to ACTH-producing pituitary corticotroph cells. Stress activates complex intracellular CRH signaling cascades in multiple cell types (Arzt and Holsboer, 2006). In pituitary cells, an increase in cAMP downstream of CRH receptor activation causes ACTH release. We therefore hypothesized that blue-light stimulation of bPAC will lead to increased cAMP levels in pituitary corticotrophs and, consequently, also to enhanced ACTH release (**Figure 2A**). Enhanced levels of circulating ACTH will then be expected to co-vary with whole-body cortisol (**Figure 2B**), as the melanocortin receptor type 2 (MC2R) is predominantly expressed in the interrenal gland and not in the zebrafish brain (Aguilleiro et al., 2010). We first demonstrated that bPAC is functional in zebrafish larvae. Injecting *bPAC* mRNA into embryos in the one-cell stage led to a blue-light dependent elevation of whole-body cAMP at 1 dpf (**Figure 2C**; Mann–Whitney test,  $p = 0.19$  for non-stimulated control vs. bPAC-injected;  $p = 0.02$  for light-stimulated control vs. bPAC-injected). To target bPAC specifically to pituitary corticotrophs, we used a fragment of the proopiomelanocortin (POMC) promoter whose expression pattern is restricted to corticotroph cells (Liu et al., 2003). To aid in visualization of the expression of the construct, the bPAC protein sequence was fused to myc-tag and a fluorescent reporter, tdTomato, via the viral 2A peptide. The transgenic line expressed bPAC specifically in pituitary corticotrophs, as revealed by the co-localization of ACTH with myc and tdTomato signal (**Figure 2D**).

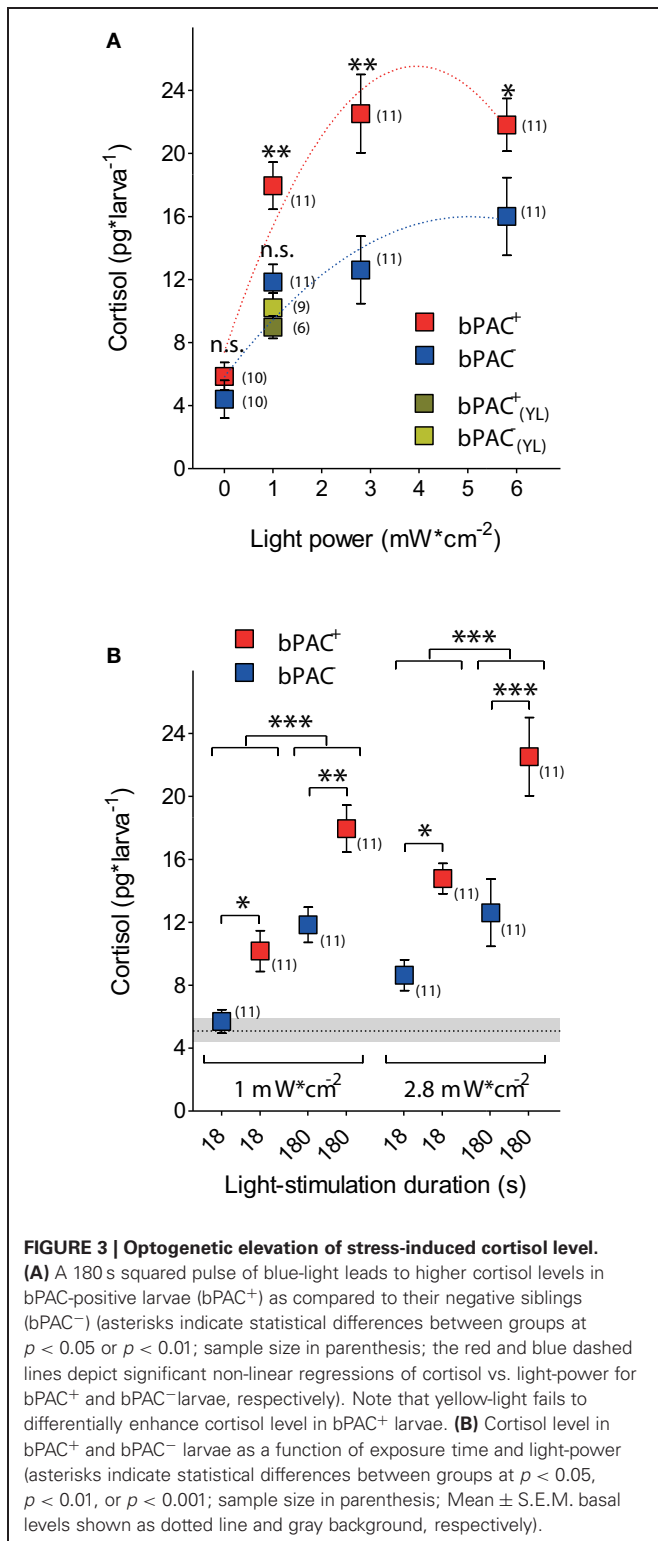
### OPTOGENETIC ELEVATION OF STRESS-INDUCED CORTISOL LEVEL

Consistent with our observations in wild-type larvae (**Figures 1A–C**), a 180 s squared pulse of blue-light led to increased cortisol levels in both bPAC-positive (bPAC<sup>+</sup>) and



bPAC<sup>-</sup> larvae. However, the former showed substantially higher cortisol levels (**Figure 3A**; Two-Way ANOVA, light power:  $F_{(3, 82)} = 29.48$ ,  $p < 0.0001$ ; genotype:  $F_{(1, 82)} = 23.09$ ,  $p < 0.0001$ ; light power X genotype:  $F_{(3, 82)} = 1.77$ ,  $p = 0.16$ ; followed by Bonferroni post-tests for within light-power pair comparisons). Yellow-light failed to enhance the rise of cortisol in the bPAC<sup>+</sup> larvae (**Figure 3A**; One-Way ANOVA,  $F_{(3, 36)} = 10.73$ ,  $p < 0.0001$ ; followed by Bonferroni post-tests for bPAC<sup>+</sup><sub>blue</sub> vs. bPAC<sup>-</sup><sub>blue</sub>, bPAC<sup>+</sup><sub>yellow</sub> or bPAC<sup>-</sup><sub>yellow</sub>, and for bPAC<sup>+</sup><sub>yellow</sub> vs. either bPAC<sup>-</sup><sub>blue</sub> or bPAC<sup>-</sup><sub>yellow</sub>), in line with the fact that bPAC activation is blue-light specific due to its BLUF (blue-light receptor using FAD) type light-sensor domain (Ryu et al., 2010; Stierl et al., 2011). Further, already

the lowest light-power caused maximum differences between the cortisol levels of the bPAC<sup>+</sup> and bPAC<sup>-</sup> larvae (**Figure 3A**). This latter result led us to examine the effects of a shorter light stimulation. We then observed that the bPAC<sup>+</sup> larvae showed enhanced cortisol levels in response to a ten times shorter stimulation, i.e., a light pulse lasting less than 20 s (**Figure 3B**; Two-Way ANOVA, left, length:  $F_{(1, 40)} = 33.85$ ,  $p < 0.0001$ ; genotype:  $F_{(1, 40)} = 19.56$ ,  $p < 0.0001$ ; length X genotype:  $F_{(1, 40)} = 0.47$ ,  $p = 0.50$ ; right, length:  $F_{(1, 40)} = 10.85$ ,  $p = 0.002$ ; genotype:  $F_{(1, 40)} = 20.37$ ,  $p < 0.0001$ ; length X genotype:  $F_{(1, 40)} = 1.13$ ,  $p = 0.29$ ; followed by Bonferroni post-test for pair comparisons), demonstrating that our approach allows for GC alterations with high temporal resolution.



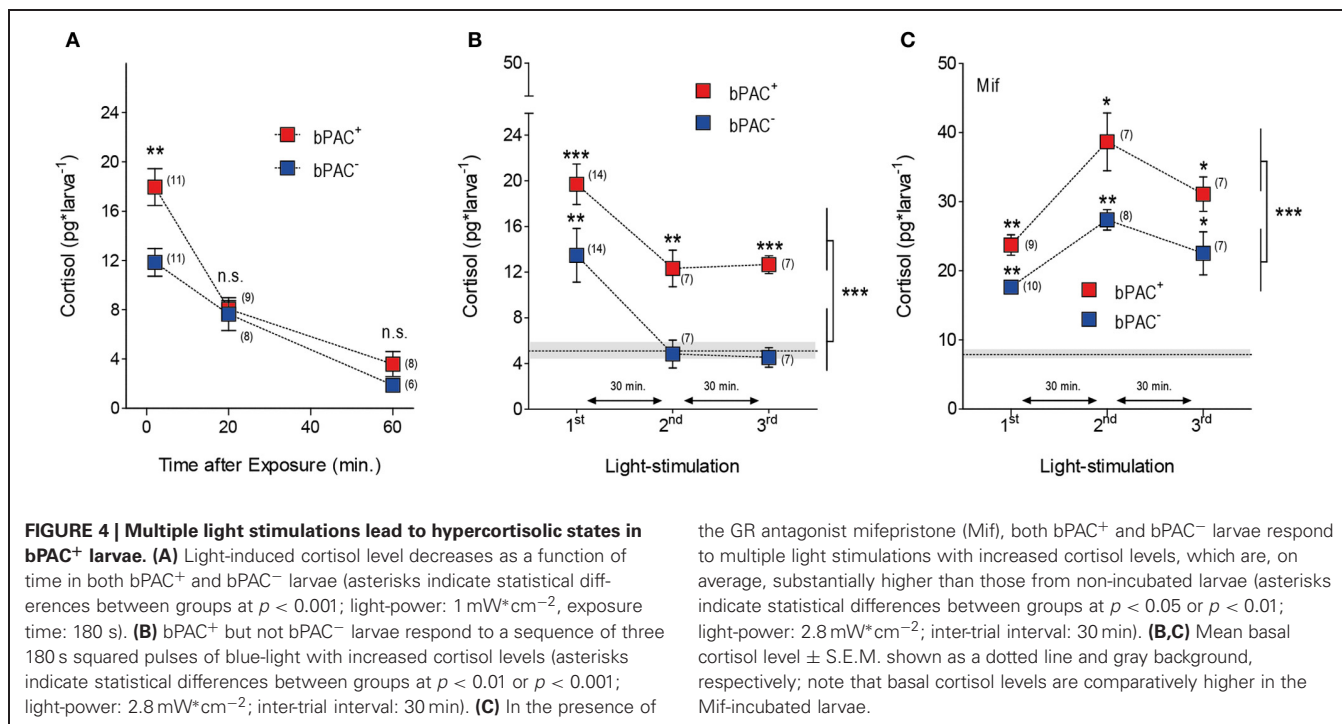
### MULTIPLE LIGHT STIMULATIONS LEAD TO TRANSIENT HYPERCORTISOLIC STATES IN bPAC<sup>+</sup> LARVAE

GCs regulate their own production by decreasing CRH and ACTH outputs from the hypothalamus and pituitary, respectively (Dallman and Yates, 1969; Dallman et al., 1994). We then

asked whether optogenetic elevation of endogenous GCs could lead to transient hypercortisolic states repeatedly. After the differential rise of cortisol triggered by blue-light, both the bPAC<sup>+</sup> and bPAC<sup>-</sup> larvae had similar and significantly reduced cortisol levels 20 min after the light offset (**Figure 4A**; bPAC<sup>+</sup>,  $F_{(2, 27)} = 38.74$ ,  $p < 0.0001$ ; bPAC<sup>-</sup>,  $F_{(2, 24)} = 17.70$ ,  $p < 0.0001$ ;  $t$ -test for pair comparisons within time points), indicating that cortisol-mediated negative feedback is fully functional in zebrafish larvae. Next, we repeatedly exposed groups of bPAC<sup>+</sup> and bPAC<sup>-</sup> larvae to a sequence of three 180 s squared pulses of blue-light. In order to compare cortisol values resulting from the most recent light pulse and not from previously elevated levels, we used a time interval of 30 min in-between light pulses, which assured similarly low levels in both groups at the time of the second and third pulses (**Figure 4A**). Using this multiple light stimulation protocol, we observed that the bPAC<sup>+</sup> larvae responded to each of the light pulses with increased cortisol levels, whereas the bPAC<sup>-</sup> larvae failed to do so after the first pulse (**Figure 4B**; Two-Way ANOVA, repeated exposure:  $F_{(2, 50)} = 12.44$ ,  $p < 0.0001$ ; genotype:  $F_{(1, 50)} = 18.55$ ,  $p < 0.0001$ ; repeated exposure X genotype:  $F_{(2, 50)} = 0.13$ ,  $p = 0.88$ ; one sample  $t$ -tests for comparisons against basal level). These results demonstrated that multiple light stimulations can repeatedly lead to hypercortisolic states in bPAC<sup>+</sup> larvae, even if the HPI axis has been down-regulated by previously elevated GC levels. To verify the role of the cortisol-mediated negative feedback in this phenomenon, we applied the same stimulation protocol to bPAC<sup>+</sup> and bPAC<sup>-</sup> larvae that had been incubated with mifepristone (Mif), an antagonist for the GC-receptor (GR) that is effective in larval zebrafish (Weger et al., 2012). Under these circumstances, both the bPAC<sup>+</sup> and bPAC<sup>-</sup> larvae responded to each of the several light pulses with increased cortisol levels. These stress-induced levels were much higher than those from the non-incubated larvae, verifying that our multiple stimulation protocol leads to down-regulated HPI axis activity. Yet, the bPAC<sup>+</sup> larvae still showed substantially higher cortisol levels than the bPAC<sup>-</sup> larvae (**Figure 4C**; Two-Way ANOVA, repeated exposure:  $F_{(2, 41)} = 16.30$ ,  $p < 0.0001$ ; genotype:  $F_{(1, 41)} = 21.88$ ,  $p < 0.0001$ ; repeated exposure X genotype:  $F_{(2, 41)} = 0.72$ ,  $p = 0.49$ ; one sample  $t$ -tests for comparisons against basal level). Also, the basal cortisol levels of both groups of larvae were higher in the Mif-incubated larvae as compared to the non-incubated larvae (**Figures 4B,C**; Mann-Whitney test,  $p = 0.004$ ). Taken together, these results show that our approach can be used to induce hypercortisolic states repeatedly, making it possible to examine the effect of repeated GC over-exposure on stress axis development and function.

### OPTOGENETICALLY ELEVATED CORTISOL LEVEL LEADS TO ENHANCED LOCOMOTION AFTER STRESSOR EXPOSURE

We noticed that blue-light led to higher post-stimulation locomotion in the bPAC<sup>+</sup> larvae, as compared to their negative siblings (**Figure 5A**). Hence, we compared the steady-state post-stimulation motion levels of the bPAC<sup>+</sup> and bPAC<sup>-</sup> larvae 20 min after a single pulse of either blue- or yellow-light. We then observed that blue- but not yellow-light enhanced locomotion in the bPAC<sup>+</sup> larvae, whereas neither blue- nor yellow-light enhanced locomotion in the bPAC<sup>-</sup> larvae (**Figure 5B**;



Mann–Whitney tests, blue-light:  $p < 0.04$ , yellow-light:  $p = 0.68$ ). We also compared the post-stimulation motion levels of both groups using data from the multiple light stimulation protocol (Figure 4B). Once again, locomotion was higher in the bPAC<sup>+</sup> than in the bPAC<sup>-</sup> larvae (Figure 5C; Two-Way ANOVA, repeated exposure:  $F_{(2, 306)} = 3.0$ ,  $p = 0.0513$ ; genotype:  $F_{(1, 306)} = 8.26$ ,  $p = 0.0043$ ; repeated exposure  $\times$  genotype:  $F_{(2, 306)} = 0.19$ ,  $p = 0.83$ ). Noticeably, the motion values from both groups of larvae plotted against the corresponding cortisol levels could be linearly approximated (Figure 5D; repeated-measures linear regression analysis,  $p < 0.001$ ). These results indicated that a brief exposure to blue-light can cause not only hypercortisolic states in dark-adapted bPAC<sup>+</sup> larvae, but also tightly correlated deviations from nominal locomotion.

#### EARLY BLUE-LIGHT STIMULATION CAUSES LONG-TERM HYPERCORTISOLAEMIA IN bPAC<sup>+</sup> LARVAE

Early GC overexposure can lead to persistent alterations of HPA axis function (Kapoor et al., 2006; Seckl and Holmes, 2007; Seckl, 2008). We asked whether multiple light stimulations at early stages of development could lead to long-term forms of hypercortisolaemia in bPAC<sup>+</sup> larvae. To answer this question, we applied the multiple light stimulation protocol (Figure 4) to the bPAC<sup>+</sup> and bPAC<sup>-</sup> larvae at 4 and 5 dpf. Later, at 6 dpf, we measured the basal and stress-induced cortisol levels of the larvae following a single 180 s squared pulse of blue-light (Figure 6). We then observed that the bPAC<sup>+</sup> larvae had increased basal cortisol at 6 dpf (Figure 6A; Wilcoxon signed rank test, bPAC<sup>+</sup>:  $p = 0.03$ , bPAC<sup>-</sup>:  $p = 0.84$ ), whereas the basal cortisol levels of the bPAC<sup>+</sup> and bPAC<sup>-</sup> larvae that had not been exposed to early blue-light stimulation did not differ from each other [ $t$ -test,  $t_{(23)} = 1.1$ ,  $p = 0.31$ ]. Also, the bPAC<sup>+</sup> larvae responded to a light

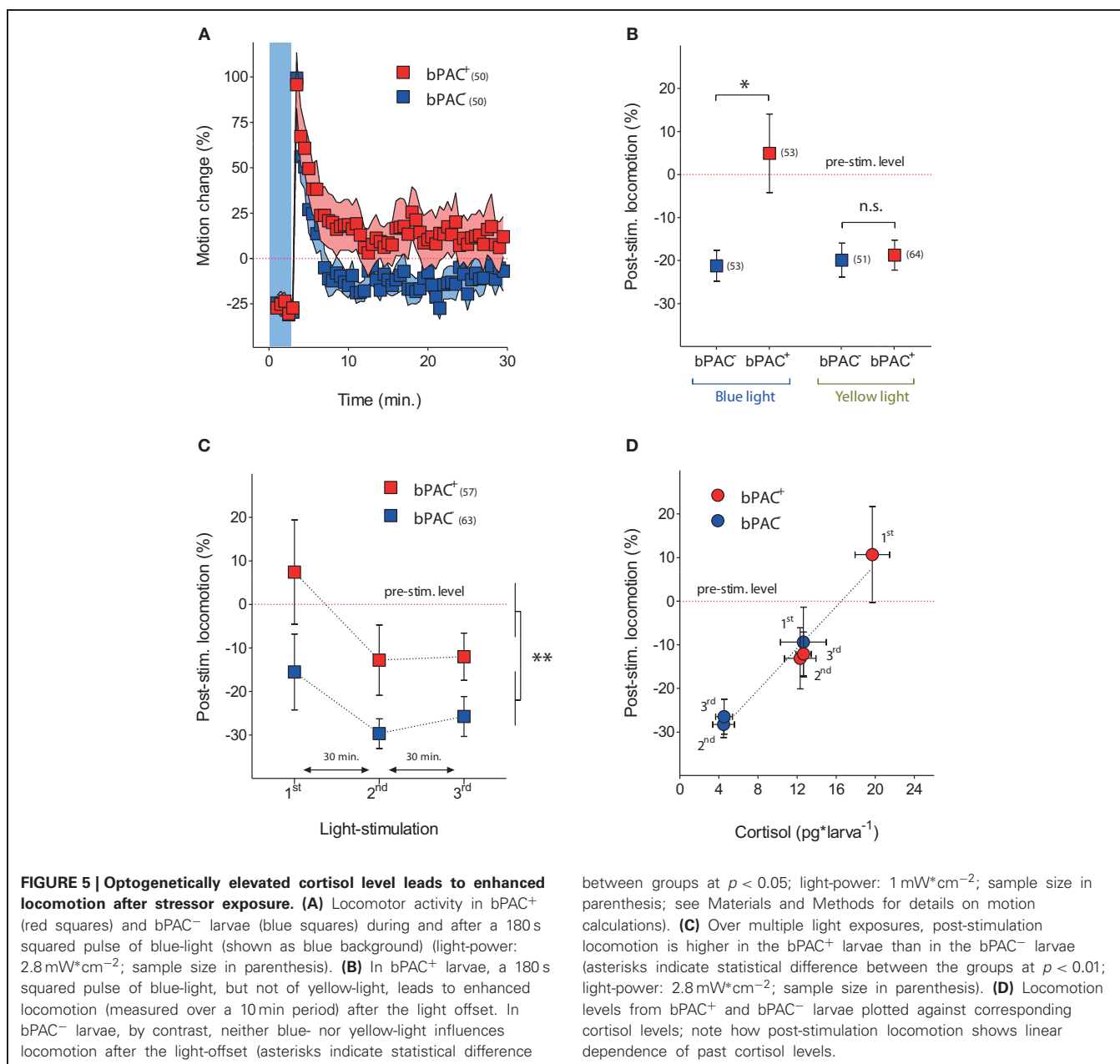
pulse with higher cortisol level, as compared to either the non-exposed bPAC<sup>+</sup> larvae or the exposed and non-exposed bPAC<sup>-</sup> larvae (Figure 6B; Two-Way ANOVA, early stimulation:  $F_{(1, 21)} = 9.8$ ,  $p < 0.01$ ; genotype:  $F_{(1, 21)} = 11.9$ ,  $p < 0.01$ ; early stimulation  $\times$  genotype:  $F_{(1, 21)} = 1.0$ ,  $p = 0.3$ , followed by Bonferroni post-tests for within genotype pair comparisons). These results demonstrated that early blue-light stimulation causes long-term hypercortisolaemia in bPAC<sup>+</sup> larvae.

#### DISCUSSION

Here we provide evidence for optogenetic modification of the gain of stress axis in larval zebrafish. Expressing *Beggiatoa* bPAC (Ryu et al., 2010; Stierl et al., 2011) specifically in ACTH-producing pituitary corticotroph cells enhances the rise of endogenous cortisol triggered by stress. Using cell-specific optogenetic manipulation of cAMP levels *in vivo*, a home-made cortisol ELISA, and behavioral tracking, our experiments determined that blue-light can activate the stress axis and enhance the ensuing cortisol rise in bPAC<sup>+</sup> larvae, also causing tightly correlated changes in locomotor activity. Additionally, our data demonstrated that early blue-light stimulation can lead to persistent forms of hypercortisolaemia in bPAC<sup>+</sup> larvae. Altogether, we developed a tool suitable for the analysis of rapid and delayed effects of stress-associated glucocorticoid levels.

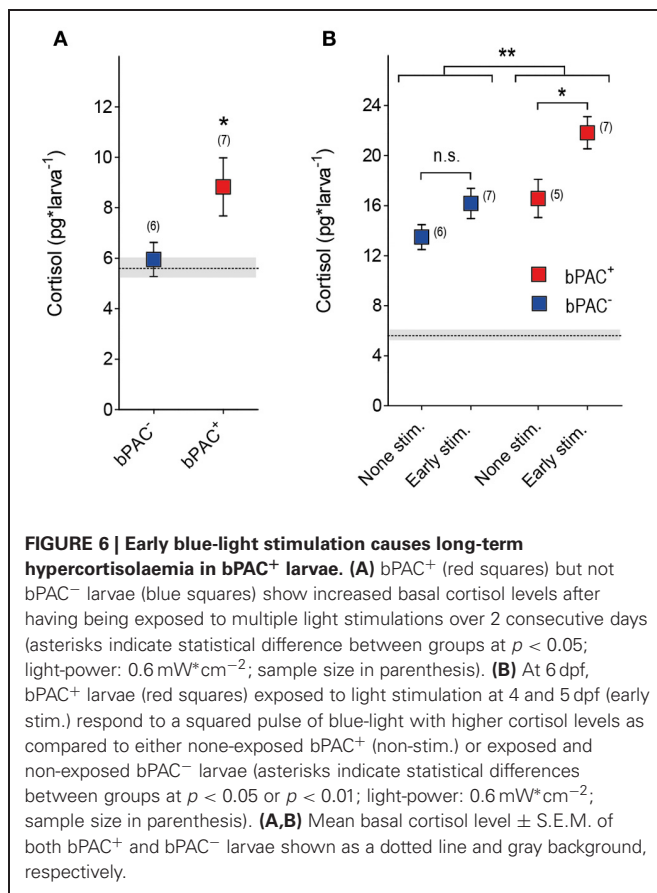
Our tests were specifically designed to amplify the activity of the stress axis non-invasively, maintaining cortisol levels within their physiological range. Upon absorption of blue-light, bPAC mRNA injected into embryos in the one-cell stage elevated whole-body cAMP at 1 dpf, verifying that bPAC is functional in zebrafish larvae (Figure 2C). The expression of bPAC was restricted to pituitary corticotroph cells, as we used a specific promoter and the fluorescence of the fused tdTomato marker was detected nowhere





else in the transgenic embryo (**Figure 2D**). *Beggiatoa* PAC has the advantage of having a lower dark activity, as compared to previously reported versions of the enzyme (Schroder-Lang et al., 2007; Ryu et al., 2010; Stierl et al., 2011). Nevertheless, to prevent unspecific activation of bPAC by white light, transgenic embryos were raised under 550 nm long-pass filters. In line with this, both the basal cortisol levels and locomotion estimates of the bPAC<sup>+</sup> larvae were similar to those of their negative siblings prior to the tests (**Figure 3A**). The blind design of the motion recordings prevented potential biases caused by any possible differential handling of the larvae. In addition, we randomly distributed groups and treatments throughout the day to avoid biased variability due to circadian cortisol variations (Dickmeis et al., 2007).

Stress causes glucocorticoid secretion via the coupled release of CRH and ACTH. Whereas ACTH primarily stimulates GC secretion, CRH and GCs have widely distributed receptors. Both CRH and GCs have been implicated in a variety of stress correlates, making it difficult to study their specific contributions to the stress response. GCs exert fast and delayed actions in multiple brain areas (Dallman, 2005; Evanson et al., 2010; Groeneweg et al., 2011). For instance, they act rapidly on neurons in the hippocampus (Komatsuzaki et al., 2005), amygdala (Karst et al., 2010), thalamus and caudate nucleus (Strelzyk et al., 2012), among other brain areas. GCs also feedback onto PVN neurons through genomic GR-mediated and non-genomic membrane-initiated mechanisms (Jones et al., 1976; De Kloet et al., 1998; Dallman, 2005; Malcher-Lopes et al., 2006; Di and Tasker, 2008;



Evanson et al., 2010). Moreover, it has also been reported that inhibition of ACTH release from the anterior pituitary occurs via genomic as well as non-genomic GC actions (Jones et al., 1972; Kaneko and Hiroshige, 1978; Widmaier and Dallman, 1984). In order to specify mechanisms underlying rapid and delayed GC effects under stress, it is necessary to control the rate of variation of endogenous GCs without modifying the activity of upstream hypothalamic networks. However, to date no effective method has been available to selectively modify the rate at which endogenous GC levels vary in response to stress.

Our experiments established a 270% increase of whole-body cortisol level within the first 5 min after the onset of a 180 s squared pulse of either blue- or yellow-light in dark-adapted wild-type larvae (Figure 1C). This indicated that a brief exposure to light can be stressful for larval zebrafish. We replicated these experiments using bPAC<sup>+</sup> and bPAC<sup>-</sup> larvae as well as blue-light of increasing light-power. These experiments determined an average 405% (min.: 350%, max.: 439%) and 263% (min.: 230%, max.: 312%) increase of whole-body cortisol level for the bPAC<sup>+</sup> and bPAC<sup>-</sup> larvae, respectively. Importantly, yellow-light did not enhance cortisol rise in bPAC<sup>+</sup> larvae (Figure 3A). Thus, in comparison to their negative siblings, the bPAC<sup>+</sup> larvae showed a greater cortisol increase in response to blue-light. This happened while the input signal that triggered the rise of cortisol in the first place remained the same for both groups of larvae. Importantly, a 10 times shorter

blue-light pulse also caused a light power-dependent enhancement of stress-induced cortisol rise, demonstrating that our protocol can be used to induce fast changes in endogenous GC level (Figure 3B).

Once the stress axis has been activated, GCs feedback onto the brain to limit the release of stress hormones (Dallman and Yates, 1969; Dallman et al., 1994). This feedback is crucial for health, as an excess of GCs is considered a risk factor in humans (Wolkowitz et al., 2009). Studies in humans and other species have shown that prenatal treatment with GCs reduces birth weight and leads to an offspring with altered HPA axis activity and increased risk of cardio-metabolic and psychiatric diseases (Kapoor et al., 2006; Seckl and Holmes, 2007; Seckl, 2008). Moreover, alterations in several brain areas have been reported as a consequence of prenatal stress or injection of synthetic GCs (Cratty et al., 1995; Weaver et al., 2004; Szyf et al., 2005; Kapoor et al., 2006; Murmu et al., 2006). However, since GCs exert pleiotropic developmental effects, it is difficult to distinguish between primary (direct) and secondary effects of GC overexposure. Such a distinction requires suitable model systems and appropriate methods for controlling hypercortisolic states during early development.

Our tests with repeated light stimulation determined that the bPAC<sup>+</sup> larvae responded to each pulse of blue-light with increased cortisol levels, whereas the bPAC<sup>-</sup> larvae failed to do so after the first pulse (Figure 4B). These results demonstrated that multiple light stimulations can repeatedly cause hypercortisolic states in bPAC<sup>+</sup> larvae, even if the HPI axis has already been down-regulated by previously elevated cortisol levels. Moreover, when incubated with the antagonist for the GC-receptor Mifepristone, both groups of larvae responded to each of the several light pulses with increased cortisol, but the bPAC<sup>+</sup> larvae still showed greater cortisol levels (Figure 4C). These results established that multiple light stimulations cause HPI axis down-regulation and verified that the gain of the stress axis is increased in bPAC<sup>+</sup> larvae. Our approach thus allows for temporally precise induction of transient hypercortisolemia, allowing analyses of early GC overexposure on stress response regulation. Strikingly, it can also be used to induce persistent forms hypercortisolemia in bPAC<sup>+</sup> larvae if repeatedly applied during earlier stages of the larval development.

GCs are known to mobilize energy (Sapolsky et al., 2000), which is necessary to cope with the high kinetic energy demands frequently associated with stress. Interestingly, our experiments determined that optogenetically elevated cortisol levels led to enhanced locomotion shortly after stressor exposure (Figures 5A–D). Substantial evidence shows that stress and GCs exert significant effects on behavior. But because stressors exert their effects through the closely linked actions of various hormones, not only of GCs, specific GC effects on behavior have been difficult to test. Larval zebrafish offer an excellent opportunity for studying the relationship between stress and behavior, although suitable behavioral endpoints need to be developed. Our protocol can be used alongside novel behavioral tests in order to examine GC effects on stress reactions and coping capacities. It could also be combined with *in vivo* small-molecule behavioral screens (Rihel and Schier, 2012) to find novel modulators of behavioral GC effects.

Optogenetic tools provide hitherto unparalleled means for non-invasive manipulation of neuronal activity. So far, optogenetic applications have been used extensively to modify neuronal activity via light-gated channels. There are comparatively fewer examples of photo-actuators used to manipulate intracellular signaling. Our results demonstrate the feasibility of selectively increasing stress-induced cortisol levels by optogenetic manipulation of cAMP level. The larval zebrafish is highly suitable for non-invasive optogenetics due to its genetic amenability and transparent body (Gahtan and Baier, 2004; Portugues et al., 2013). We showed that the gain of the stress axis can be optogenetically increased in freely behaving larval zebrafish, modifying endocrine and behavioral outputs. So far, bPAC had not been used to modify neuroendocrine and behavioral adjustments in vertebrates. We provide a first demonstration for the feasibility of using it in larval zebrafish to enhance cAMP levels, hormone release and behavioral alteration. Given the availability of a large number of tissue-specific promoters, our protocol could be extended to other cell-types to alter physiological processes *in vivo* using bPAC. Moreover, it could be combined with imaging and bioluminescence techniques for detailed examinations of GC effects on the activity of hypothalamic and pituitary cells.

In summary, our study introduces a powerful tool for the analysis of rapid and delayed GC effects on brain function and

behavior, feedbacks within the stress axis and developmental programming by GCs. Follow up work involves analyses of stress circuit development and stress behavior against backgrounds of nominal and increased gain of the HPI axis.

## AUTHOR CONTRIBUTIONS

Conception and design of the experiments: Soojin Ryu and Rodrigo J. De Marco. Acquisition of data: Antonia H. Groneberg, Rodrigo J. De Marco, Chen-Min Yeh, Soojin Ryu, Luis A. Castillo Ramírez. Analysis and interpretation of data: Rodrigo J. De Marco, Soojin Ryu, Antonia H. Groneberg, Chen-Min Yeh, Luis A. Castillo Ramírez. Drafting the article: Rodrigo J. De Marco, Soojin Ryu, and Antonia H. Groneberg.

## ACKNOWLEDGMENTS

We thank P. Hegemann and G. Nagel for sharing the bPAC plasmid and information about bPAC before publication. We thank U. Herget for assistance with the experiments, C. Maurer and A. Schäfer for helpful comments on the earlier versions of this manuscript, and K. Schmidt, R. Rödel, M. Lukat, and N. Neef for logistic support. We thank G. Shoeman, R. Singer and A. Schoell for expert fish care. This work was supported by DFG-FOR1279, the Max Planck Society and Behrens-Weise Foundation.

## REFERENCES

- Agulleiro, M. J., Roy, S., Sanchez, E., Puchol, S., Gallo-Payet, N., and Cerda-Reveter, J. M. (2010). Role of melanocortin receptor accessory proteins in the function of zebrafish melanocortin receptor type 2. *Mol. Cell. Endocrinol.* 320, 145–152.
- Alderman, S. L., and Bernier, N. J. (2009). Ontogeny of the corticotropin-releasing factor system in zebrafish. *Gen. Comp. Endocrinol.* 164, 61–69.
- Alsop, D., and Vijayan, M. M. (2008). Development of the corticosteroid stress axis and receptor expression in zebrafish. *Am. J. Physiol. Regul. Integr. Comp. Physiol.* 294, R711–R719.
- Arzt, E., and Holsboer, F. (2006). CRF signaling: molecular specificity for drug targeting in the CNS. *Trends Pharmacol. Sci.* 27, 531–538.
- Burgess, H. A., and Granato, M. (2007). Modulation of locomotor activity in larval zebrafish during light adaptation. *J. Exp. Biol.* 210, 2526–2539.
- Cachat, J., Stewart, A., Grossman, L., Gaikwad, S., Kadri, F., Chung, K. M., et al. (2010). Measuring behavioral and endocrine responses to novelty stress in adult zebrafish. *Nat. Protoc.* 5, 1786–1799.
- Charmandari, E., Tsigos, C., and Chrousos, G. (2005). Endocrinology of the stress response. *Annu. Rev. Physiol.* 67, 259–284.
- Chrousos, G. P. (1998). Stressors, stress, and neuroendocrine integration of the adaptive response. The 1997 Hans Selye Memorial Lecture. *Ann. N.Y. Acad. Sci.* 851, 311–335.
- Clark, K. J., Boczek, N. J., and Ekker, S. C. (2011). Stressing zebrafish for behavioral genetics. *Rev. Neurosci.* 22, 49–62.
- Cratty, M. S., Ward, H. E., Johnson, E. A., Azzaro, A. J., and Birkle, D. L. (1995). Prenatal stress increases corticotropin-releasing factor (CRF) content and release in rat amygdala minces. *Brain Res.* 675, 297–302.
- Dallman, M. F. (2005). Fast glucocorticoid actions on brain: back to the future. *Front. Neuroendocrinol.* 26, 103–108.
- Dallman, M. F., Akana, S. F., Levin, N., Walker, C. D., Bradbury, M. J., Suemaru, S., et al. (1994). Corticosteroids and the control of function in the hypothalamo-pituitary-adrenal (HPA) axis. *Ann. N.Y. Acad. Sci.* 746, 22–31, discussion: 31–32, 64–27.
- Dallman, M. F., and Yates, F. E. (1969). Dynamic asymmetries in the corticosteroid feedback path and distribution-metabolism-binding elements of the adrenocortical system. *Ann. N.Y. Acad. Sci.* 156, 696–721.
- De Kloet, E. R., Joels, M., and Holsboer, F. (2005). Stress and the brain: from adaptation to disease. *Nat. Rev. Neurosci.* 6, 463–475.
- De Kloet, E. R., Vreugdenhil, E., Oitzl, M. S., and Joels, M. (1998). Brain corticosteroid receptor balance in health and disease. *Endocr. Rev.* 19, 269–301.
- Di, S., and Tasker, J. G. (2008). Rapid synapse-specific regulation of hypothalamic magnocellular neurons by glucocorticoids. *Prog. Brain Res.* 170, 379–388.
- Dickmeis, T., and Foulkes, N. S. (2011). Glucocorticoids and circadian clock control of cell proliferation: at the interface between three dynamic systems. *Mol. Cell. Endocrinol.* 331, 11–22.
- Dickmeis, T., Lahiri, K., Nica, G., Vallone, D., Santoriello, C., Neumann, C. J., et al. (2007). Glucocorticoids play a key role in circadian cell cycle rhythms. *PLoS Biol.* 5:e78. doi: 10.1371/journal.pbio.0050078
- Egan, R. J., Bergner, C. L., Hart, P. C., Cachat, J. M., Canavello, P. R., Elegante, M. F., et al. (2009). Understanding behavioral and physiological phenotypes of stress and anxiety in zebrafish. *Behav. Brain Res.* 205, 38–44.
- Evanson, N. K., Tasker, J. G., Hill, M. N., Hillard, C. J., and Herman, J. P. (2010). Fast feedback inhibition of the HPA axis by glucocorticoids is mediated by endocannabinoid signaling. *Endocrinology* 151, 4811–4819.
- Fitzmaurice, G. M., Laird, N. M., and Ware, J. H. (2004). *Applied Longitudinal Analysis*. Hoboken, NJ: John Wiley and Sons.
- Flik, G., Klaren, P. H., Van Den Burg, E. H., Metz, J. R., and Huising, M. O. (2006). CRF and stress in fish. *Gen. Comp. Endocrinol.* 146, 36–44.
- Forlano, P. M., and Cone, R. D. (2007). Conserved neurochemical pathways involved in hypothalamic control of energy homeostasis. *J. Comp. Neurol.* 505, 235–248.
- Fuzzen, M. L., Van Der Kraak, G., and Bernier, N. J. (2010). Stirring up new ideas about the regulation of the hypothalamic-pituitary-interrenal axis in zebrafish (*Danio rerio*). *Zebrafish* 7, 349–358.
- Gahtan, E., and Baier, H. (2004). Of lasers, mutants, and see-through brains: functional neuroanatomy in zebrafish. *J. Neurobiol.* 59, 147–161.
- Griffiths, B. B., Schoonheim, P. J., Ziv, L., Voelker, L., Baier, H., and Gahtan, E. (2012). A zebrafish model of glucocorticoid resistance shows serotonergic modulation of the stress response. *Front. Behav. Neurosci.* 6:68. doi: 10.3389/fnbeh.2012.00068
- Greeneweg, F. L., Karst, H., De Kloet, E. R., and Joels, M. (2011). Rapid

- non-genomic effects of corticosteroids and their role in the central stress response. *J. Endocrinol.* 209, 153–167.
- Holsboer, F., Von Bardeleben, U., Gerken, A., Stalla, G. K., and Müller, O. A. (1984). Blunted corticotropin and normal cortisol response to human corticotropin-releasing factor in depression. *N. Engl. J. Med.* 311:1127. doi: 10.1056/NEJM198410253111718
- Jones, M. T., Brush, F. R., and Neame, R. L. (1972). Characteristics of fast feedback control of corticotrophin release by corticosteroids. *J. Endocrinol.* 55, 489–497.
- Jones, M. T., Hillhouse, E. W., and Burden, J. (1976). Proceedings: mechanism of action of fast and delayed corticosteroid feedback at the hypothalamus. *J. Endocrinol.* 69, 34P–35P.
- Kaneko, M., and Hiroshige, T. (1978). Fast, rate-sensitive corticosteroid negative feedback during stress. *Am. J. Physiol.* 234, R39–R45.
- Kapoor, A., Dunn, E., Kostaki, A., Andrews, M. H., and Matthews, S. G. (2006). Fetal programming of hypothalamo-pituitary-adrenal function: prenatal stress and glucocorticoids. *J. Physiol.* 572, 31–44.
- Karst, H., Berger, S., Erdmann, G., Schütz, G., and Joëls, M. (2010). Metaplasticity of amygdalar responses to the stress hormone corticosterone. *Proc. Natl. Acad. Sci. U.S.A.* 107, 14449–14454.
- Komatsuzaki, Y., Murakami, G., Tsurugizawa, T., Mukai, H., Tanabe, N., Mitsuhashi, K., et al. (2005). Rapid spinogenesis of pyramidal neurons induced by activation of glucocorticoid receptors in adult male rat hippocampus. *Biochem. Biophys. Res. Commun.* 335, 1002–1007.
- Liu, N. A., Huang, H., Yang, Z., Herzog, W., Hammerschmidt, M., Lin, S., et al. (2003). Pituitary corticotroph ontogeny and regulation in transgenic zebrafish. *Mol. Endocrinol.* 17, 959–966.
- Macphail, R. C., Brooks, J., Hunter, D. L., Padnos, B., Irons, T. D., and Padilla, S. (2009). Locomotion in larval zebrafish: influence of time of day, lighting and ethanol. *Neurotoxicology* 30, 52–58.
- Malcher-Lopes, R., Di, S., Marcheselli, V. S., Weng, F. J., Stuart, C. T., Bazan, N. G., et al. (2006). Opposing crosstalk between leptin and glucocorticoids rapidly modulates synaptic excitation via endocannabinoid release. *J. Neurosci.* 26, 6643–6650.
- McEwen, B. S. (2008). Central effects of stress hormones in health and disease: Understanding the protective and damaging effects of stress and stress mediators. *Eur. J. Pharmacol.* 583, 174–185.
- Murmu, M. S., Salomon, S., Biala, Y., Weinstock, M., Braun, K., and Bock, J. (2006). Changes of spine density and dendritic complexity in the prefrontal cortex in offspring of mothers exposed to stress during pregnancy. *Eur. J. Neurosci.* 24, 1477–1487.
- Nemeroff, C., Widerlöv, E., Bissette, G., Walléus, H., Karlsson, I., Eklund, K., et al. (1984). Elevated concentrations of CSF corticotropin-releasing factor-like immunoreactivity in depressed patients. *Science* 226, 1342–1344.
- Peter, R. E. (1977). The preoptic nucleus in fishes: a comparative discussion of function-activity relationships. *Amer. Zool.* 17, 775–785.
- Portugues, R., Severi, K. E., Wiyart, C., and Ahrens, M. B. (2013). Optogenetics in a transparent animal: circuit function in the larval zebrafish. *Curr. Opin. Neurobiol.* 23, 119–126.
- Raber, J. (1998). Detrimental effects of chronic hypothalamic-pituitary-adrenal axis activation. From obesity to memory deficits. *Mol. Neurobiol.* 18, 1–22.
- Ramsay, J., Feist, G., Varga, Z., Westerfield, M., Kent, M., and Schreck, C. (2006). Whole-body cortisol is an indicator of crowding stress in adult zebrafish, *Danio rerio*. *Aquaculture* 258, 565–574.
- Ramsay, J. M., Feist, G. W., Varga, Z. M., Westerfield, M., Kent, M. L., and Schreck, C. B. (2009). Whole-body cortisol response of zebrafish to acute net handling stress. *Aquaculture* 297, 157–162.
- Rihel, J., and Schier, A. F. (2012). Behavioral screening for neuroactive drugs in zebrafish. *Dev. Neurobiol.* 72, 373–385.
- Ryu, M. H., Moskvina, O. V., Siltberg-Liberles, J., and Gomelsky, M. (2010). Natural and engineered photoactivated nucleotidyl cyclases for optogenetic applications. *J. Biol. Chem.* 285, 41501–41508.
- Ryu, S., Mahler, J., Acampora, D., Holzschuh, J., Erhardt, S., Omodei, D., et al. (2007). Orthopedia homeodomain protein is essential for diencephalic dopaminergic neuron development. *Curr. Biol.* 17, 873–880.
- Sapolsky, R. M., Romero, L. M., and Munck, A. U. (2000). How do glucocorticoids influence stress responses? Integrating permissive, suppressive, stimulatory, and preparative actions. *Endocr. Rev.* 21, 55–89.
- Schroder-Lang, S., Schwarzel, M., Seifert, R., Strunker, T., Kateriya, S., Looser, J., et al. (2007). Fast manipulation of cellular cAMP level by light *in vivo*. *Nat. Methods* 4, 39–42.
- Seckl, J. R. (2008). Glucocorticoids, developmental ‘programming’ and the risk of affective dysfunction. *Prog. Brain Res.* 167, 17–34.
- Seckl, J. R., and Holmes, M. C. (2007). Mechanisms of disease: glucocorticoids, their placental metabolism and fetal ‘programming’ of adult pathophysiology. *Nat. Clin. Pract. Endocrinol. Metab.* 3, 479–488.
- Selye, H. (1956). *The Stress of Life*. New York, NY: McGraw-Hill.
- Speedie, N., and Gerlai, R. (2008). Alarm substance induced behavioral responses in zebrafish (*Danio rerio*). *Behav. Brain Res.* 188, 168–177.
- Steenbergen, P. J., Richardson, M. K., and Champagne, D. L. (2011). The use of the zebrafish model in stress research. *Prog. Neuropsychopharmacol. Biol. Psychiatry* 35, 1432–1451.
- Stierl, M., Stumpf, P., Udvari, D., Gueta, R., Hagedorn, R., Losi, A., et al. (2011). Light modulation of cellular cAMP by a small bacterial photoactivated adenylyl cyclase, bPAC, of the soil bacterium *Beggiatoa*. *J. Biol. Chem.* 286, 1181–1188.
- Strelzyk, F., Hermes, M., Naumann, E., Oitzl, M., Walter, C., Busch, H. P., et al. (2012). Tune it down to live it up? Rapid, nongenomic effects of cortisol on the human brain. *J. Neurosci.* 32, 616–625.
- Szyf, M., Weaver, I. C., Champagne, F. A., Diorio, J., and Meaney, M. J. (2005). Maternal programming of steroid receptor expression and phenotype through DNA methylation in the rat. *Front. Neuroendocrinol.* 26, 139–162.
- Tang, W., Ehrlich, I., Wolff, S. B., Michalski, A. M., Wolf, S., Hasan, M. T., et al. (2009). Faithful expression of multiple proteins via 2A-peptide self-processing: a versatile and reliable method for manipulating brain circuits. *J. Neurosci.* 29, 8621–8629.
- Weaver, I. C., Cervoni, N., Champagne, F. A., D’Alessio, A. C., Sharma, S., Seckl, J. R., et al. (2004). Epigenetic programming by maternal behavior. *Nat. Neurosci.* 7, 847–854.
- Weger, B. D., Weger, M., Nusser, M., Brenner-Weiss, G., and Dickmeis, T. (2012). A chemical screening system for glucocorticoid stress hormone signaling in an intact vertebrate. *ACS Chem. Biol.* 7, 1178–1183.
- Wendelaar Bonga, S. E. (1997). The stress response in fish. *Physiol. Rev.* 77, 591–625.
- Westerfield, M. (2000). *The Zebrafish Book: A Guide for the Laboratory Use of Zebrafish (Danio rerio)*, 4th Edn. Eugene: University of Oregon Press.
- Widmaier, E. P., and Dallman, M. F. (1984). The effects of corticotropin-releasing factor on adrenocorticotropin secretion from perfused pituitaries *in vitro*: rapid inhibition by glucocorticoids. *Endocrinology* 115, 2368–2374.
- Wolkowitz, O. M., Burke, H., Epel, E. S., and Reus, V. I. (2009). Glucocorticoids. Mood, memory, and mechanisms. *Ann. N.Y. Acad. Sci.* 1179, 19–40.
- Yehuda, R. (2009). Status of glucocorticoid alterations in post-traumatic stress disorder. *Ann. N.Y. Acad. Sci.* 1179, 56–69.
- Ziv, L., Muto, A., Schoonheim, P. J., Meijsing, S. H., Strasser, D., Ingraham, H. A., et al. (2012). An affective disorder in zebrafish with mutation of the glucocorticoid receptor. *Mol. Psychiatry* doi: 10.1038/mp.2012.64. [Epub ahead of print].

**Conflict of Interest Statement:** Soojin Ryu and Rodrigo J. De Marco have submitted a patent application for the use of optogenetic transgenic zebrafish lines to find novel regulators of stress response.

Received: 14 February 2013; paper pending published: 06 March 2013; accepted: 11 April 2013; published online: 06 May 2013.

Citation: De Marco RJ, Groneberg AH, Yeh C-M, Castillo Ramirez LA and Ryu S (2013) Optogenetic elevation of endogenous glucocorticoid level in larval zebrafish. *Front. Neural Circuits* 7:82. doi: 10.3389/fncir.2013.00082

Copyright © 2013 De Marco, Groneberg, Yeh, Castillo Ramirez and Ryu. This is an open-access article distributed under the terms of the Creative Commons Attribution License, which permits use, distribution and reproduction in other forums, provided the original authors and source are credited and subject to any copyright notices concerning any third-party graphics etc.